

FLUA®



RADIAL 10 DO



An appropriate lighting project allows the surface volumes and indentations to stand out, creates evocative atmospheres and adds dynamism to walls and building facades by alternating lights and shades.

By the concept of spatial infinity, RADIAL performs extensive light to delight the interior space with rhythm.

Thanks to the very thin flexible tape, up to 10 meter length and only 30mm wide, it's possible to bring light to any corner of the interior to be furnished and enhance specific spots.

The tailorable length design gives the flexibility to designers to adapt to different interior space, from wall to wall, from floor to ceiling.

Designer	FLUA
Sales status	On Sale
Product classification	Interior
Model	439019AP2

Installation information

Area	Wall
Method	Surface mounted
Cut hole size	/
Embedded height	/

Technical general

System power	96W
Flux	9600lm
Beam angle	L
Material	Aluminum, Plastic
Appearance color	PAB
Size	10150*55*26mm
Adjustable angle	Not available
Ingress protection	IP20
Input voltage	100-240VAC
Electrical level	ClassII

Electrical parameters

Driver brand	MEAN WELL
Driver type	LRS-200-24
Electrical installation	External

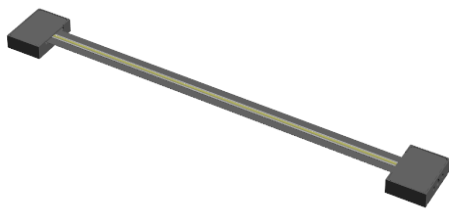
Light source parameters

Brand	FLUA
Type	FLUA-CV1
Power	96W
Light color	WW-NW-CW
Color temperature	2700K-6500K
CRI	80

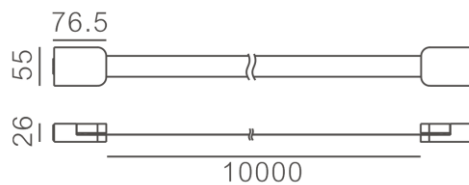
Other options

Beam angle	/
Color temperature	/
Color	/
Appearance color	/

3D module



Line drawing



Unit: mm

FLUA®

Instructions

