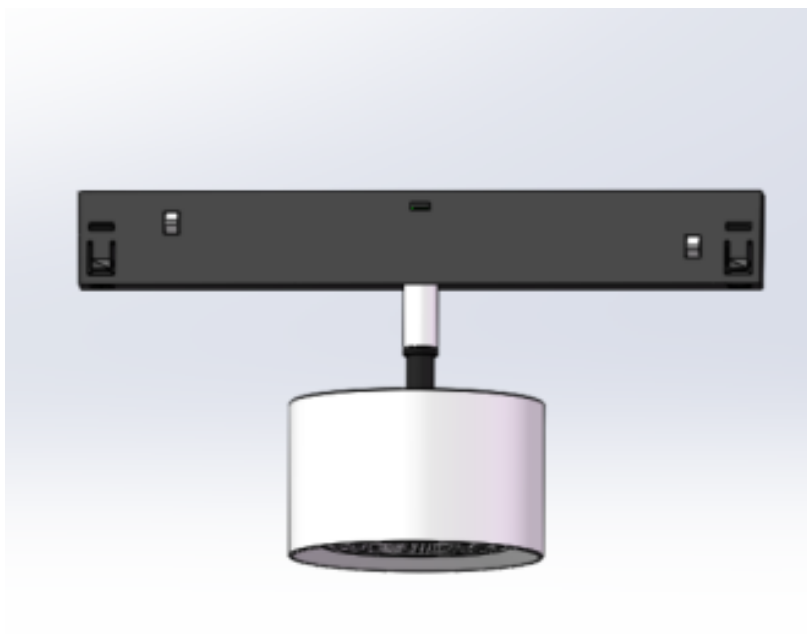


FLUA®



CILINDRO CK M



The tiny CILINDRO, simpler than FLUA other conventional track lights, adopts ultra thin lens design. Its simple and concise style is perfectly integrated into the decoration while providing lighting.

Designer	FLUA
Sales status	On Sale
Product classification	Interior
Model	553819EAP

WWW.FLUA.COM

Installation information

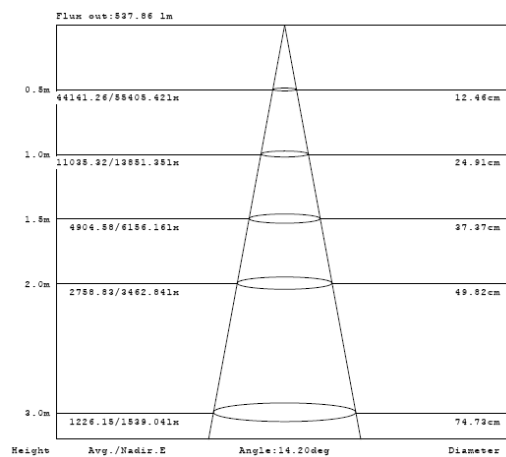
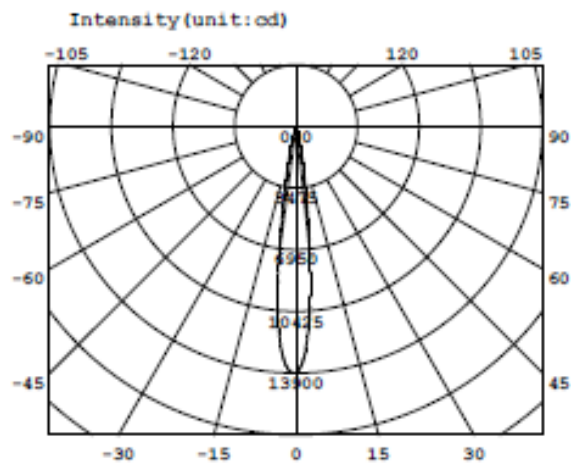
Area	Ceiling
Method	Track
Cut hole size	/
Embedded height	/

Technical general

System power	13.6W
Flux	1276lm
Beam angle	33°
Material	Aluminum
Appearance color	PAB
Size	Φ78*47.5mm
Adjustable angle	Available
Ingress protection	IP20
Input voltage	48V
Electrical level	Class III

Photometric graph

7.2W 14°



Electrical parameters

Driver brand	DRIARTE
Driver type	DW350-700L
Electrical installation	Build in

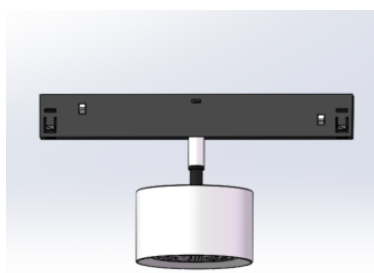
Light source parameters

Brand	LEDTEEN
Type	GZ121-030-1205
Power	12.3W
Light color	WW
Color temperature	3000K
CRI	90

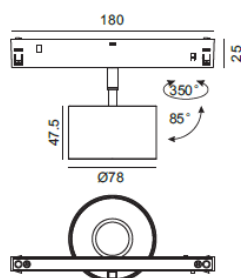
Other options

Beam angle	14° 19° 48°
Color temperature	2700K 3500K 4000K
Color	/
Appearance color	PAW WLG
Dimming model	553819EDA
Dimming mode	DALI
Driver brand	WANXIU
Driver type	DALI-CC-30W-48V
Input voltage	48V

3D module



Line drawing



Unit: mm

FLUA®

Instructions

