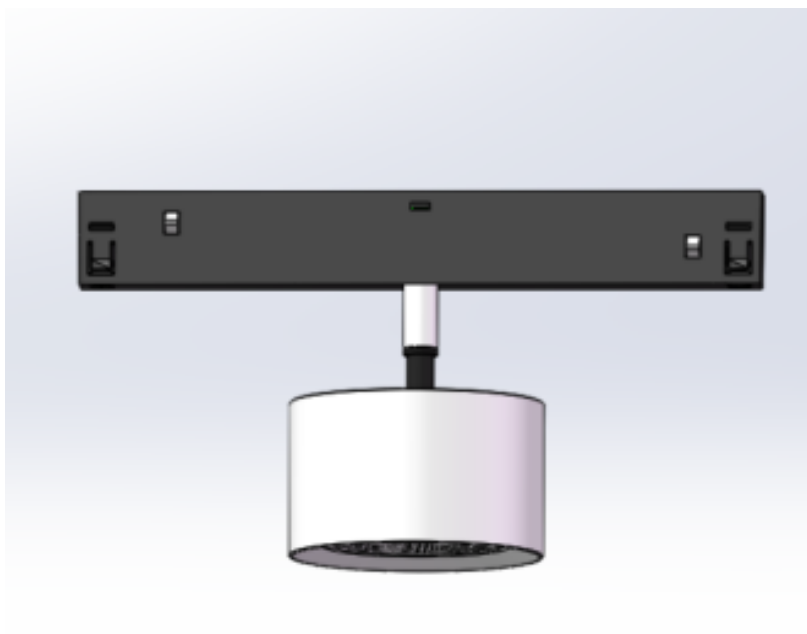


# FLUA®



**CILINDRO CK S**



---

The tiny CILINDRO, simpler than FLUA other conventional track lights, adopts ultra thin lens design. Its simple and concise style is perfectly integrated into the decoration while providing lighting.

---

<b>Designer</b>	<b>FLUA</b>
<b>Sales status</b>	<b>On Sale</b>
<b>Product classification</b>	<b>Interior</b>
<b>Model</b>	<b>553419EAP</b>

---

[WWW.FLUA.COM](http://WWW.FLUA.COM)

## Installation information

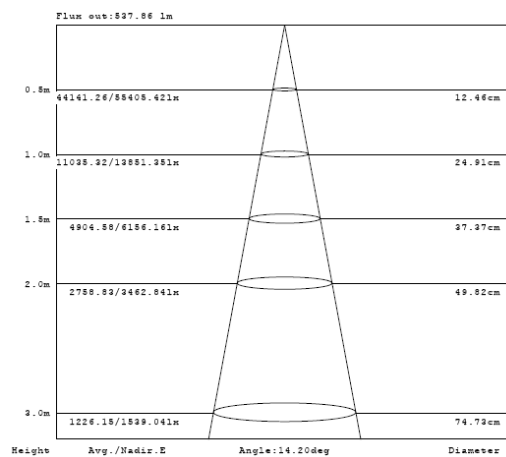
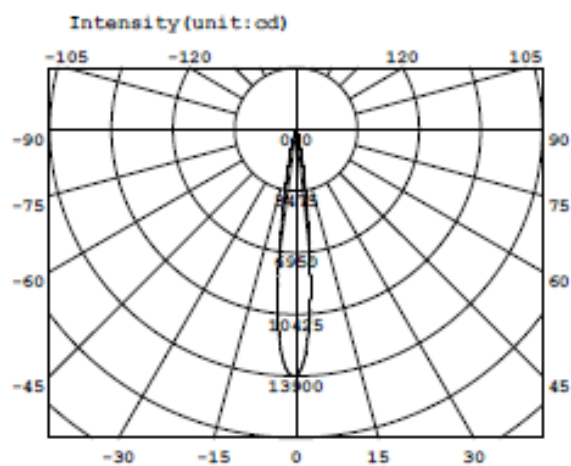
Area	Ceiling
Method	Track
Cut hole size	/
Embedded height	/

## Technical general

System power	7.2W
Flux	631lm
Beam angle	32°
Material	Aluminum
Appearance color	PAB
Size	Φ67*41.5mm
Adjustable angle	Available
Ingress protection	IP20
Input voltage	48V
Electrical level	Class III

## Photometric graph

7.2W 11°



---

## Electrical parameters

Driver brand	DRIARTE
Driver type	FLDR12W200L
Electrical installation	Build in

---

## Light source parameters

Brand	LEDTEEN
Type	GZ111-016-1204
Power	7W
Light color	WW
Color temperature	3000K
CRI	90

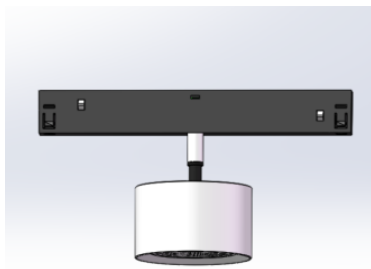
---

## Other options

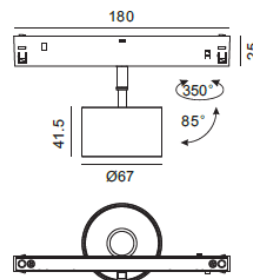
Beam angle	11° 18° 44°
Color temperature	2700K 3500K 4000K
Color	/
Appearance color	PAW WLG
Dimming model	553419EDA
Dimming mode	DALI
Driver brand	DRIARTE
Driver type	308BDL30W200L-V1
Input voltage	48V

---

## 3D module



## Line drawing



Unit: mm

## Instructions

