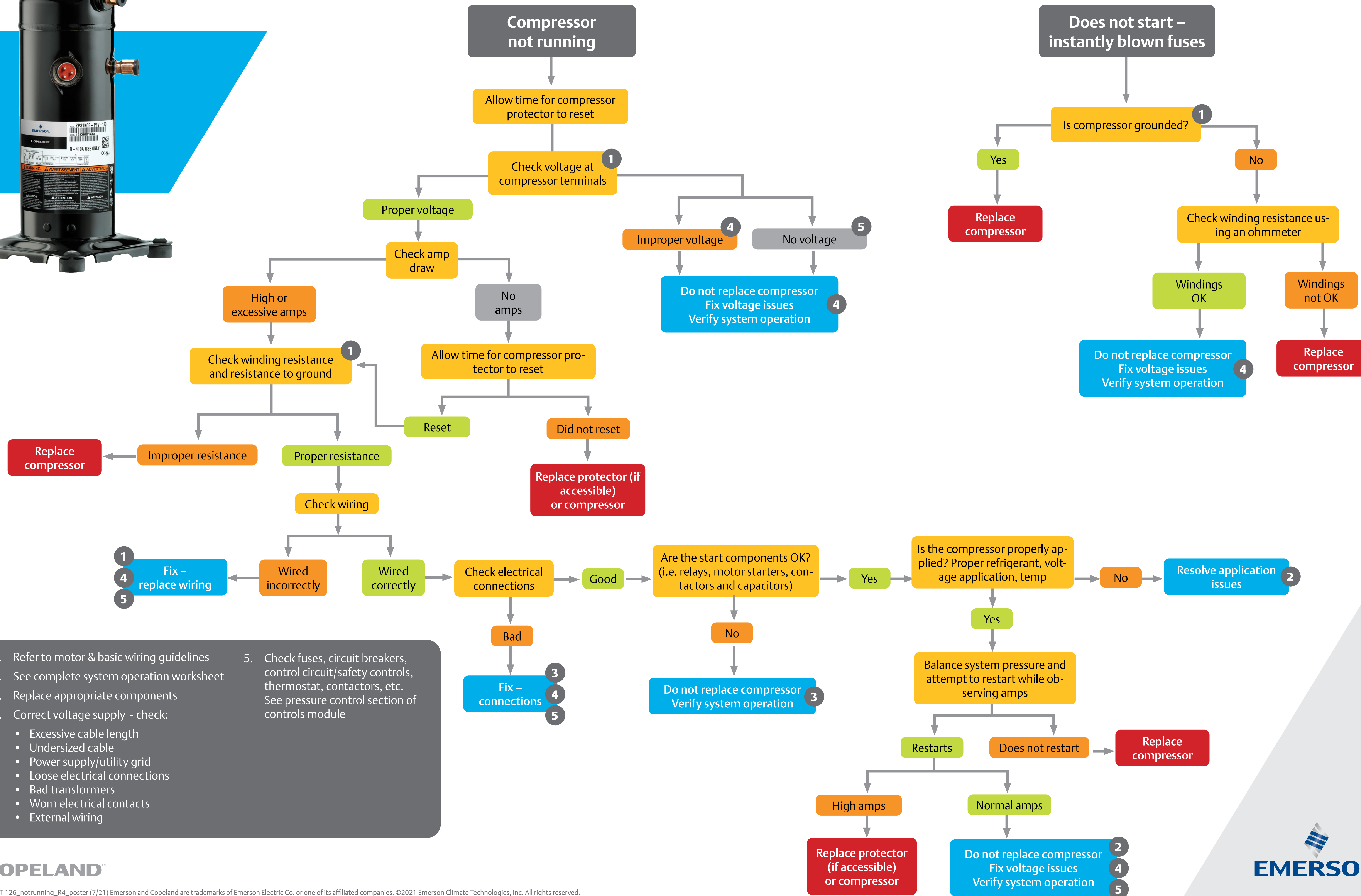
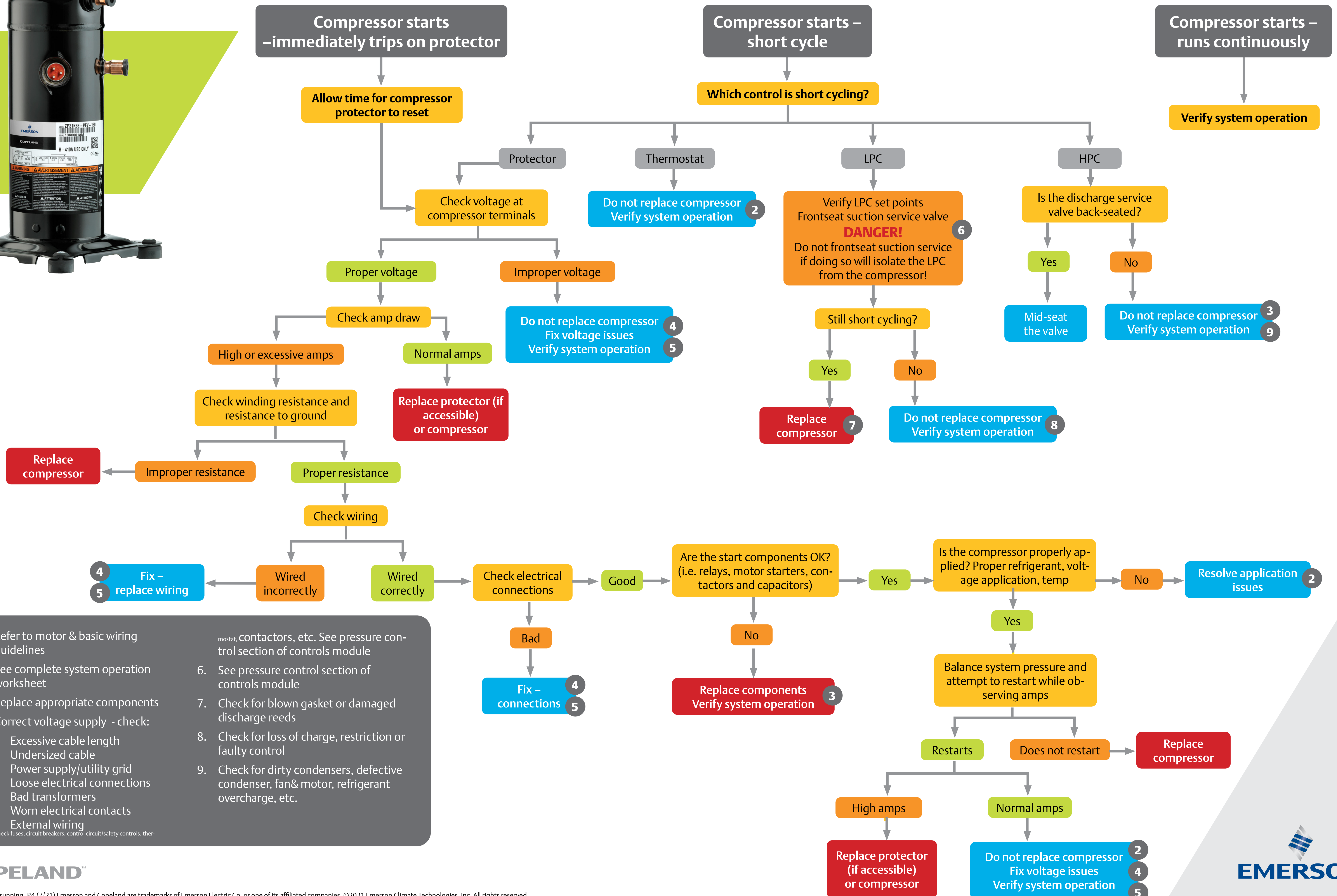


# Troubleshooting Guide – Not Starting/Running



1. Refer to motor & basic wiring guidelines
2. See complete system operation worksheet
3. Replace appropriate components
4. Correct voltage supply - check:
  - Excessive cable length
  - Undersized cable
  - Power supply/utility grid
  - Loose electrical connections
  - Bad transformers
  - Worn electrical contacts
  - External wiring
5. Check fuses, circuit breakers, control circuit/safety controls, thermostat, contactors, etc. See pressure control section of controls module

# Troubleshooting Guide – Starts/Runs



1. Refer to motor & basic wiring guidelines
2. See complete system operation worksheet
3. Replace appropriate components
4. Correct voltage supply - check:
  - Excessive cable length
  - Undersized cable
  - Power supply/utility grid
  - Loose electrical connections
  - Bad transformers
  - Worn electrical contacts
  - External wiring
5. Check fuses, circuit breakers, control circuit/safety controls, thermostat, contactors, etc. See pressure control section of controls module
6. See pressure control section of controls module
7. Check for blown gasket or damaged discharge reeds
8. Check for loss of charge, restriction or faulty control
9. Check for dirty condensers, defective condenser, fan & motor, refrigerant overcharge, etc.

