

**whest**TWO.2

dual mono phonostage

Operating manual



## Contents

Introduction

Safety

Cleaning

Connections

Cartridge gain and loading

Technical specification

Fig.1 whestTWO.2 rear panel

Fig.2 Basic audio connection

Fig.3 Gain and load selector

Warranty

## Introduction

Thank you for buying the Whest Audio whestTWO.2 phonostage.

As you know, this unit is designed to retrieve the maximum amount of information from your vinyl LPs. It does this by using proprietary low noise audio circuitry as well as a newly developed filter which together with the RIAA filter enables the whestTWO.2 to playback up to 53Khz.

## Brief history

The RIAA curve was designed many years ago to enable the use of vinyl as a playback medium. Back then the humble stylus and audio electronics could really only playback a very limited bandwidth. A system bandwidth of 12Khz was quite rare. Nowadays most systems have a bandwidth of 100Khz; the modern day cartridge can playback frequencies beyond 60Khz – so why continue to use a phonostage with a filter curve designed for systems designed in the 1950s?

## Forward thinking

Because of our close links with the music recording industry we were able to measure several Neumann cutter heads prior to cutting a master onto acetate. What we found was that the cutter head would cut high frequency all the way to 50Khz!

With these results and the research acquired from the DAP programme we then designed an hf filter that would complement the RIAA filter we had designed for the famed PS.20 phonostage. This has now been incorporated into the whestTWO.2 phonostage. Because of the extended hf response of the whestTWO.2, large amounts of information are now able to be heard when it was once thought there was nothing there!

The extended hf enables you to hear further into the soundstage by bringing to life the lowest frequencies of a kick drum and positioning all instruments to form a three dimensional soundstage.

It is because of the extended hf response that the whestTWO.2 excels where others just plainly fail.

## Safety

Place your unit on a firm level surface where it is not exposed to dripping or splashing of any liquid. Position it away from radiators and other heat sources and leave a space of at least 5cms around the unit for ventilation.

Please note that there are no user serviceable parts inside.

In the unlikely event that this unit needs to be serviced please return it to an authorised Whest Audio service agent.

There is a risk of electrical shock if this unit is opened!

Please do not attempt to open this unit for servicing unless authorised as it **WILL** invalidate your warranty.

## Cleaning

When cleaning the unit please do not use any liquids as it may enter the unit causing it to malfunction. We recommend applying a very small amount of engineering oil such as WD40® to a lint free cloth and then wipe the unit in the direction of the grain on both the front panel and lid. Engineering oil is a tried and tested method of cleaning grained aluminium and stainless steel panels. You only need to do this a few times a year.

## Connections

Please read the safety section before connecting your unit.

Before connecting to the mains, check that the mains supply voltage corresponds to the voltage printed on the power supply unit. If the mains voltage is different, please consult your authorised Whest Audio dealer.

All whestTWO.2 units come supplied with an Audiophile grade interconnect as well as a computer grade interconnect for transferring your LPs to your computer.

Although all listening tests were conducted with this interconnect please feel free to use your preferred interconnect or ask your dealer for advice.

1. When connecting the whestTWO.2 please make sure that your system's source selector is switched to an input OTHER THAN the input to which the whestTWO.2 unit is to be connected.



2. Please make sure that the whestTWO.2 is connected to a switched wall socket or similar switched socket is in the OFF position.
3. First disconnect the turntable from the amplifier / preamplifier or other phonostage.
4. Connect the turntable leads to the whestTWO.2 observing the colour codes for channel ID.
5. Connect the 'grounding' lead from the turntable arm lead to the grounding post on the whestTWO.2. – some tonearms do not have this lead but don't worry.
6. Connect the output of the whestTWO.2 to the amplifier / preamplifier aux/line input.
7. Once you are happy that all inputs and outputs have been connected properly goto point 8.
8. Then plug the integral mains cable into an appropriate switched power wall socket.

9. If all is OK, just switch on. 2 small red LED indicators will glow on the front panel of the whestTWO.2 – this indicates that all is OK.
10. Select the correct source input on the amplifier / preamplifier.
11. You are now ready to go, so, play an LP, sit back and enjoy!

It may take several hours before the whestTWO.2 settles down to work efficiently, but generally 4-6 hours is sufficient time for the sensitive components to find their 'steady state' working temperature.

The whestTWO.2 has been designed to be simple to integrate into any audio or computer based system. Please familiarise yourself with the rear panel layout Fig. 1 and basic audio connecting Fig. 2 as it will make connecting, unplugging and cleaning easier.

Connecting to a computer soundcard for transferring to hard-drive

The whestTWO.2 phonostage comes supplied with a special interconnect to connect to your computer soundcard analog input. With this interconnect you will be able to transfer your vinyl collection to your computer hard drive.

The whestTWO.2 can be connected to your computer sound card analogue audio input while the whestTWO.2 and computer are in the 'on' position.

To get the best possible quality from your transfers please do read the instructions for your software fully before attempting to transfer your vinyl.

### Cartridge gain and loading (Fig. 3)

Caution: THIS OPERATION CAN ONLY BE DONE WHEN THE UNIT IS DISCONNECTED FROM THE POWER LINE AND THE AUDIO SYSTEM

Your whestTWO.2 comes preset for a low output moving coil cartridge requiring a gain setting of 65dB and a load setting of 100ohms. This setting will be fine for the majority of moving coil cartridges. If however your cartridge requires a different setting you can either ask your dealer to set it for you OR you can easily do it yourself in just a few minutes:

- i) the whestTWO.2 comes supplied with a 2.5mm Allen key. This Allen key is used to remove the small rectangular panel underneath to access the gain and load settings. After removing the 2 screws that hold the panel, you will see 2 banks of switches - one bank per channel (Fig. 3)

- ii) The top 6 switches (bank1) control the loading value and the bottom 6 (bank2) the gain value.
- iii) The settings are as: 100, 220, 470, 1k, 15k and 47K ohms for loading with the gain settings 43dB MM, 50, 55, 60, 65 and 70dB low MC
  - to set the whestTWO.2 for moving magnet with a load value of 47K ohms:
    - set all the switch positions to the 'off' position
    - slide switch no. 6 (bank1) indicating 47K ohms and switch no. 1 (bank2) indicating 43dB (MM)
  - to set the whestTWO.2 for moving coil with a output value of 0.25mV
    - set all the switch positions to the 'off' position
    - slide switch no. 1 (bank1) indicating 100ohm and switch no. 6 (bank2) indicating 65dB (MC)
- iv) Once your gain and load characteristics are set, just replace the panel and 2 screws, put the whestTWO.2 back on the shelf and power it up - remember to check the amplifier volume is on its minimum 'low' position.

If your cartridge requires a different loading value, please ask your Whest Audio dealer or contact Whest Audio Ltd on [whestworld@fastmail.fm](mailto:whestworld@fastmail.fm) or tel: +44 (0) 20 3176 0376.

Alternatively, if you find that you have just purchased a cartridge that requires gain and load values outside of the parameters used by any other phonostage manufacturer, please call Whest Audio Ltd on +44 (0) 20 3176 0376 or email [whestworld@fastmail.fm](mailto:whestworld@fastmail.fm). Our technical department will be able to advise how to setup the whestTWO.2 for your new cartridge as the whestTWO.2 has the ability to be 'trimmed' for absolutely any cartridge manufactured.

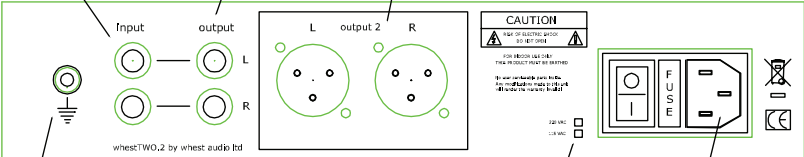
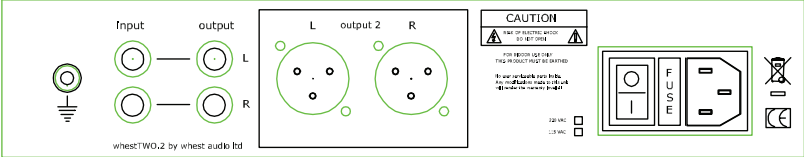
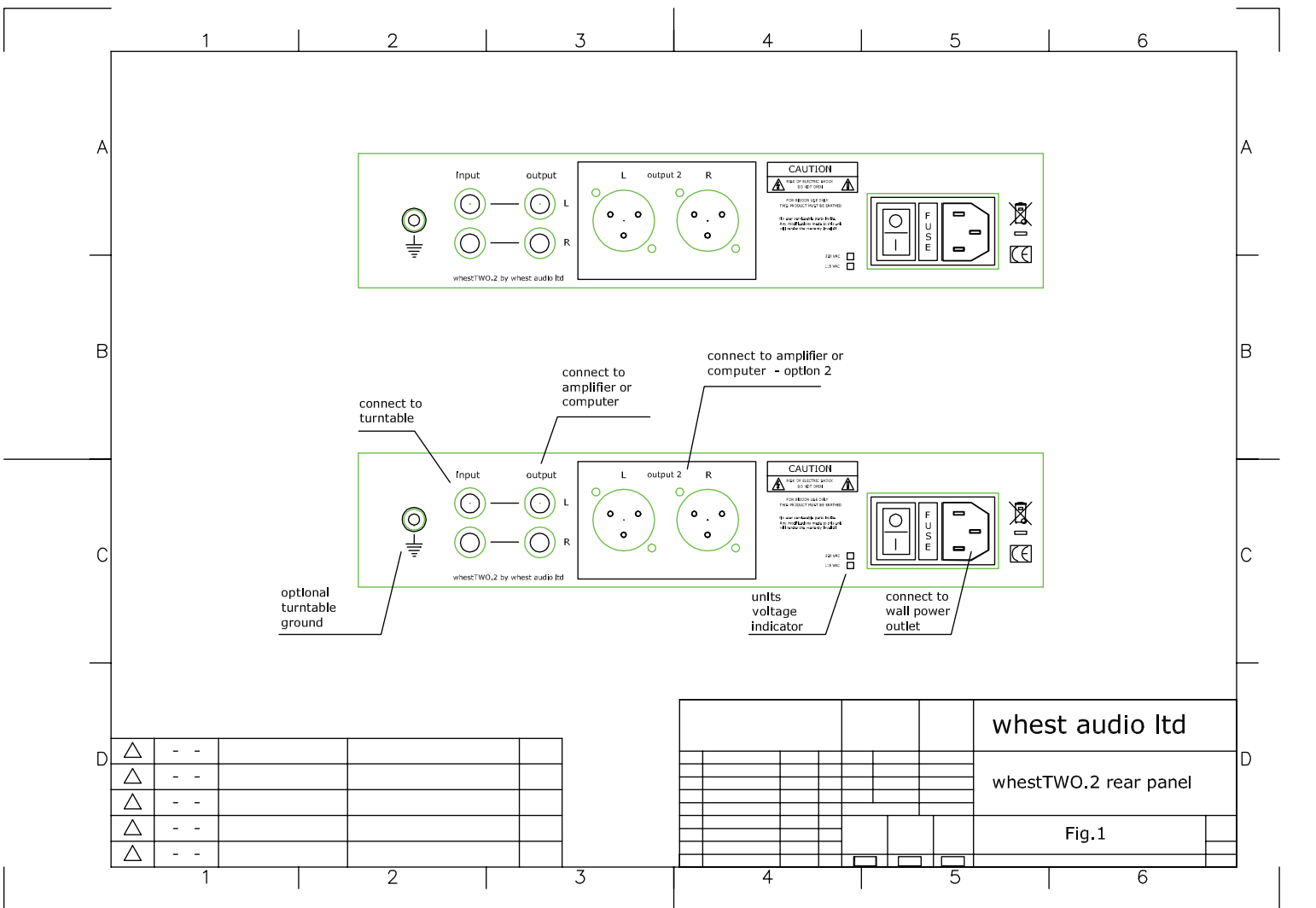
## Technical specification

Model No.:	whestTWO.2 dual mono phono stage
RIAA curve accuracy:	17Hz - 21Khz +/- 0.15dB
Working band:	5Hz - 76Khz
GAIN	
MM	43dB and 50dB to suit all 1mV to 6mV
MC High	55dB and 60dB to suit all 0.3mV - 0.8mV
MC Low	65dB and 70dB to suit all 0.18mV - 2.5mV
Loading in ohms	100,220,470,1k,15k,47k
THD+N:	0.005%
Connections:	Unbalanced RCA
Connectors:	Gold Audiophile
Unpacked weight:	2.3Kgs
Packed weight:	3.4Kgs
Dimensions:	1 x 252mm x 245mm x 58mm
Operating voltage:	230VAC -115VAC 50/60 Hz (see dealer)

Supplied in package:

- 1 x whestTWO.2 dual mono head unit
- 1 x Audiophile RCA interconnect
- 1 x Audiophile 3.5mm plug to 2 x RCA  
computer/ audio cable
- 1 x Operating manual





△	--				
△	--				
△	--				
△	--				
△	--				

whest audio ltd

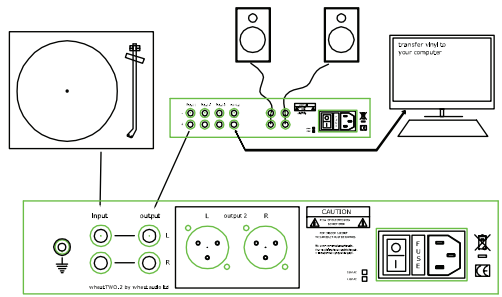
whestTWO.2 rear panel

Fig. 1

1                      2                      3                      4                      5                      6

A

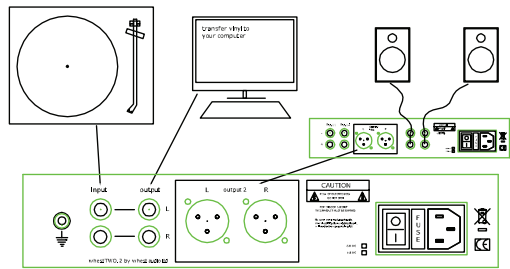
This is the most typical of setups where the whestTWO.2 is connected as the phonostage only. The computer is optional for transferring vinyl to your computer/ digital streamer.



A

B

For better vinyl to digital quality, this connection system is preferred. An adaptor from 3 pin XLR to normal RCA can be purchased from your Whest Audio dealer or your amplifier does not have the 3 pin XLR connectors fitted.



B

C

Ask us about conversion software :  
email - whestworld@fastmail.fm

C

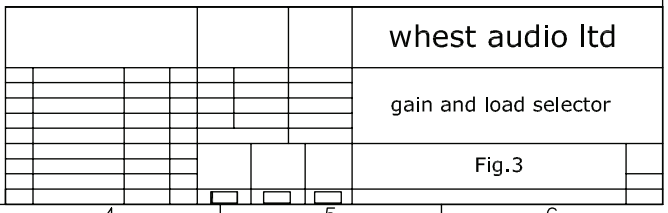
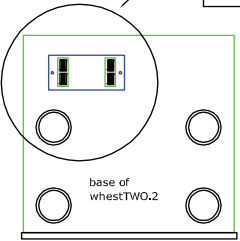
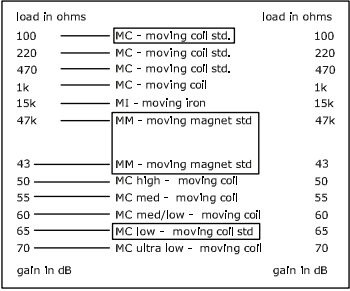
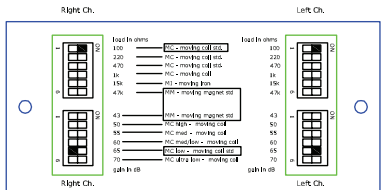
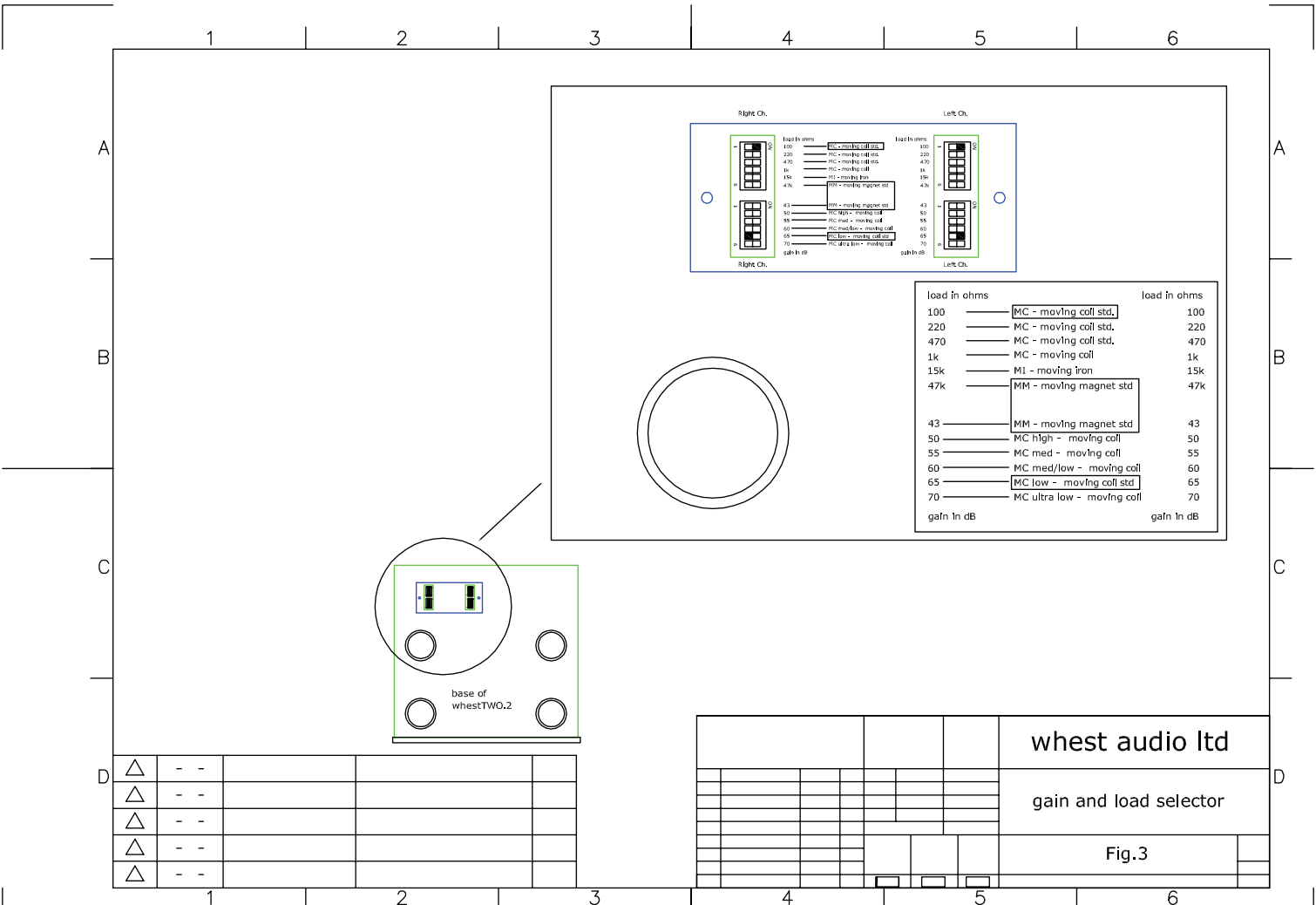
D

△	--			
△	--			
△	--			
△	--			
△	--			

1                      2                      3                      4                      5                      6

D

whest audio ltd				
basic audio connection				
Fig.2				



## Warranty

All Whest Audio products are covered by a limited warranty against defects in design, materials and workmanship for a period of one (1) year from the original date of purchase to the original purchaser only. This warranty is available upon proper registration of ownership within thirty (30) days of first purchase. Extended warranty is given by your Whest Audio dealer.

Proper registration is made by filling out and returning the attached warranty registration card along with a copy of the original sales receipt as proof of the original date of purchase.

If during the warranty period this product fails to operate under normal use and service due to defects in design, materials or workmanship, Whest Audio will, at their option, either repair or replace the product in accordance with the terms and conditions stipulated herein.

Whest Audio reserves the right to charge a handling fee if a returned product is found to be not under warranty, according to the conditions below.

## Warranty Conditions

1. This limited warranty is valid only if proper registration of this product is made in the way described above.
2. If Whest Audio repairs or replaces the product, the repair for the defect concerned, or the replaced product shall be warranted for the remaining time of the original warranty or for ninety (90) days from the date of repair, whichever is longer.
3. This warranty does not cover any failure of the product due to normal wear and tear, or due to misuse, including but not limited to use in other than the normal and customary manner, in accordance with the Whest Audio instruction for use and maintenance of the product. Nor does this warranty cover any failure of the product due to accident, modification or adjustment, acts of God or damage resulting from liquid.
  - This warranty does not cover product failures caused by modification or repair of the product performed by a non-Whest Audio authorised person.
5. In no event will Whest Audio Limited be liable for incidental or consequential damages of any nature whatsoever arising from purchase, use or inability to use this product.

6. There are no express warranties, whether written or oral, other than this printed limited warranty. All implied warranties, including without limitation the implied warranties of merchantability or fitness for a particular purpose are limited to the duration of this limited warranty.

The warranty does not affect the consumer's statutory rights under applicable legislation in force.

Please complete the Warranty Registration Card and send it together with a copy of the original sales receipt to:

WHEST AUDIO LIMITED  
WARRANTY REGISTRATION DEPARTMENT  
Q WEST SUITE 2.07 GREAT WEST ROAD LONDON TW8 0GP

For your records:

Model.....whestTWO.2.....

Serial No. ....

Purchase Date .....

Supplier - Name and Address

**To post or email to Whest Audio Warranty dept. –  
Email: whestworld@fastmail.fm**

Model.....whestTWO.2.....

Serial No. ....

Purchase Date .....

*Please include a copy of your purchase receipt*

Supplier - Name and Address