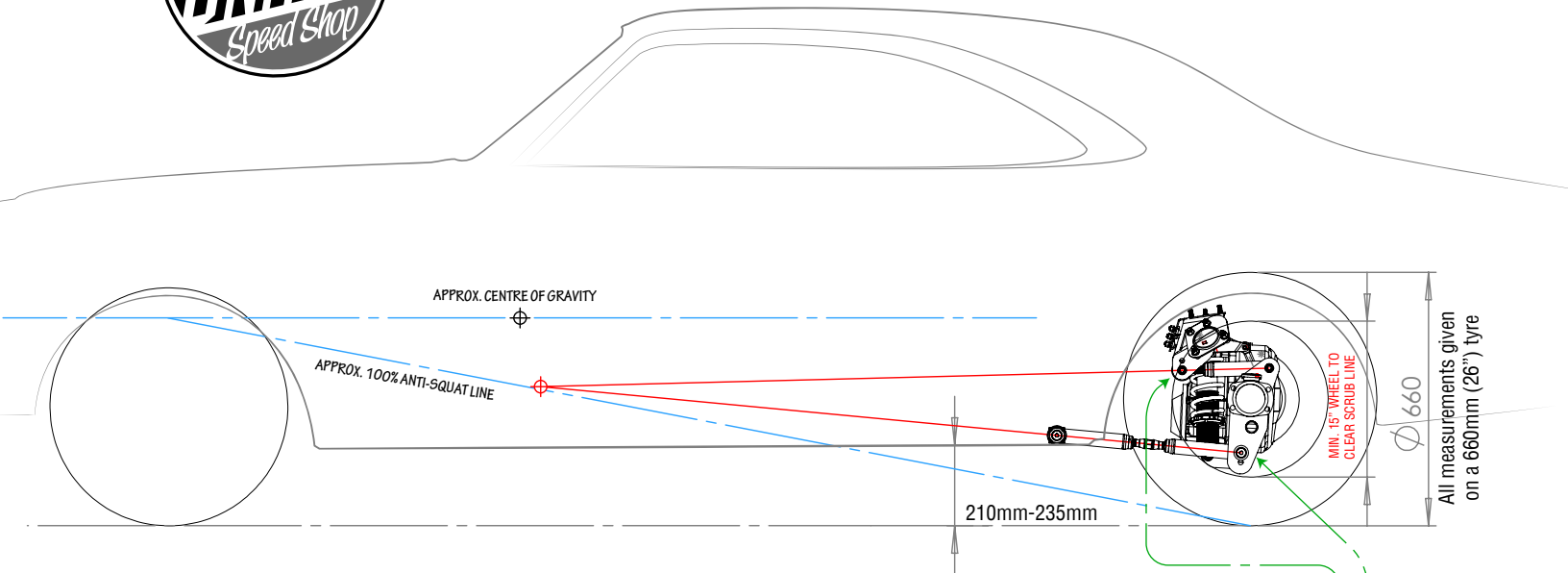
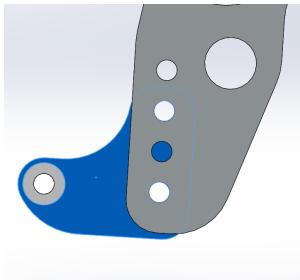




HKTG HOLDEN PARALLEL 4LINK + COILOVER KIT FITMENT SPECIFICATIONS



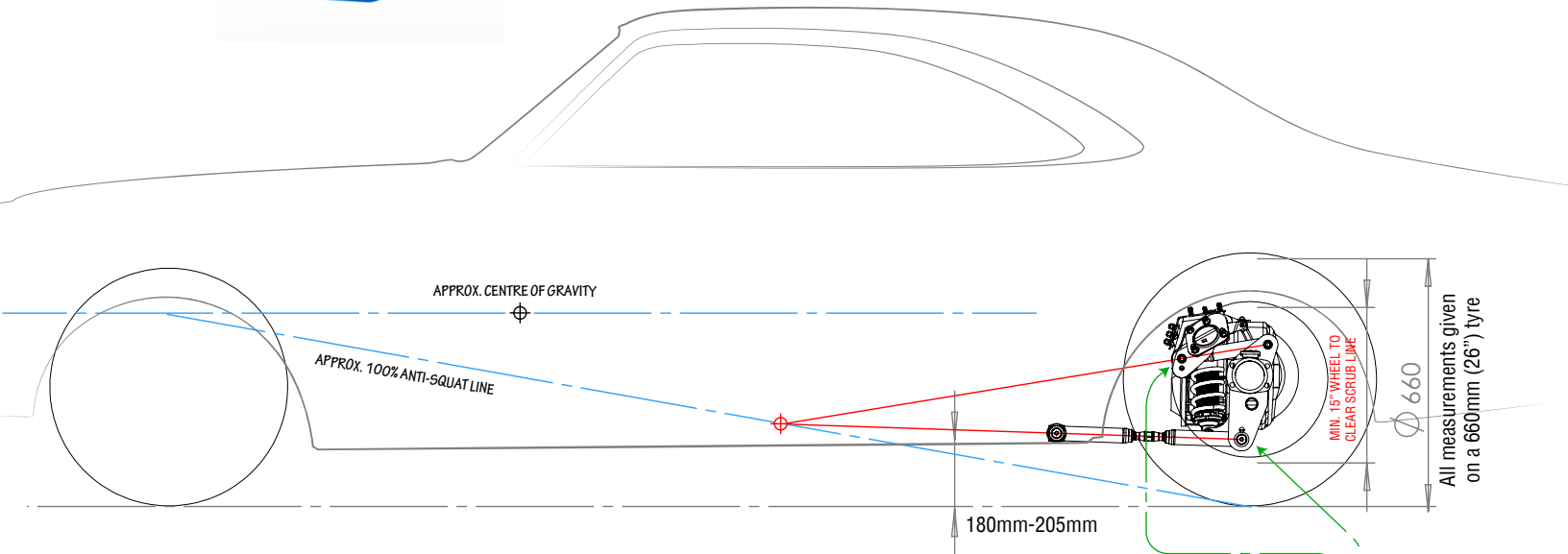
'STANDARD' HEIGHT KIT (adjustable from approx 210mm - 235mm ground clearance at sill)



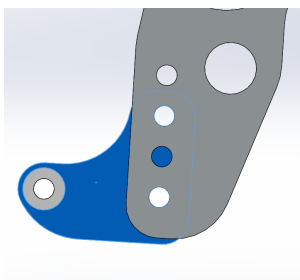
Use lower hole set for 210mm ride height
(will give around 85mm clearance
from bumpstop to subframe)

Use upper hole set for 235mm ride height
(will give around 110mm clearance
from bumpstop to subframe)

Use the indicated four bar
mount holes to maintain near
100% (neutral) anti-squat



'LOWERED' HEIGHT KIT (adjustable from approx 180mm - 205mm ground clearance at sill)



Use lower hole set for 180mm ride height
(will give around 50mm clearance
from bumpstop to subframe)

Use upper hole set for 205mm ride height
(will give around 75mm clearance
from bumpstop to subframe)

Use the indicated four bar
mount holes to maintain near
100% (neutral) anti-squat