

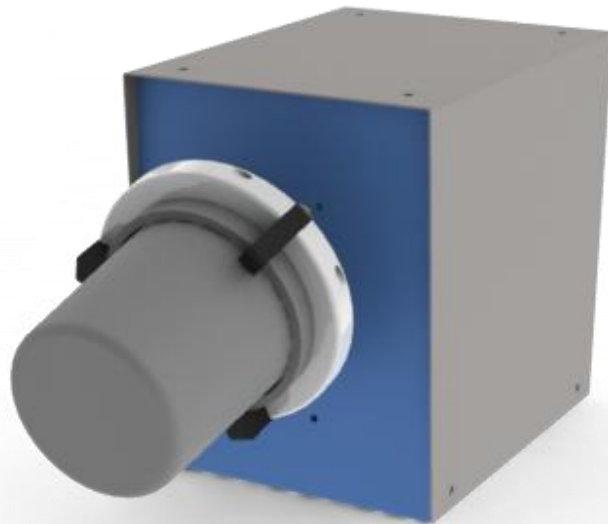


# BONE MARROW MACHINE

## **Model No. BMT-01**

---

### OPERATING MANUAL



© 2014 Biorep Technologies, Inc.

# **SAFETY PRECAUTIONS**



**WARNING**



**RISK OF ELECTRIC SHOCK  
DO NOT OPEN**

**WARNING:** TO REDUCE THE RISK OF ELECTRIC SHOCK, DO NOT REMOVE COVER (OR BACK). NO USER SERVICEABLE PARTS INSIDE. REFER TO QUALIFIED SERVICE PERSONNEL.



The lightning flash with arrowhead symbol, within an equilateral triangle, is intended to alert the user to the presence of uninsulated “dangerous voltage” within the product’s enclosure that may be of sufficient magnitude to constitute a risk of electric shock to persons.



The exclamation point within an equilateral triangle is intended to alert the user to the presence of important operating and maintenance (servicing) instructions in the literature accompanying the device.

**WARNING:** TO REDUCE THE RISK OF FIRE OR ELECTRIC SHOCK, DO NOT EXPOSE THIS DEVICE TO RAIN OR MOISTURE. DANGEROUS HIGH VOLTAGES ARE PRESENT INSIDE THE ENCLOSURE. DO NOT OPEN THE CABINET. REFER SERVICING TO QUALIFIED PERSONNEL ONLY.

**CAUTION:** TO PREVENT ELECTRIC SHOCK, MATCH WIDE BLADE OF PLUG TO WIDE SLOT, FULLY INSERT.

In the spaces provided below, record the Model and Serial No. located on the rear panel of your Perfusion Apparatus.

Model No.           BMT-01          

Serial No.                                   

Retain this information for future reference.

# **IMPORTANT SAFETY INSTRUCTIONS**

**CAUTION: PLEASE READ AND OBSERVE ALL WARNINGS AND INSTRUCTIONS GIVEN IN THIS OWNER'S MANUAL AND THOSE MARKED ON THE UNIT. RETAIN THIS BOOKLET FOR FUTURE REFERENCE.**

**DO NOT REMOVE THE CABINET COVER, OR YOU MAY BE EXPOSED TO DANGEROUS VOLTAGE. REFER SERVICING TO QUALIFIED PERSONNEL ONLY.**

1. Read and follow these instructions.
2. Keep these instructions.
3. Heed all warnings.
4. Do not block any ventilation openings. Install in accordance with the manufacturer's instructions.
5. Do not defeat the safety purpose of the polarized or grounding-type plug.
6. A polarized plug has two blades with one wider than the other. A grounding-type plug has two blades and a third grounding prong, which is provided for your safety. If the provided plug does not fit into your outlet, consult an electrician for replacement of the obsolete outlet.
7. Protect the power cord from being walked on or pinched particularly at plugs convenience receptacles, and the point where it exit from the apparatus.
8. Keep your fingers well clear of all moving parts. Neglecting to do so may cause personal injury.
9. Refer all servicing to qualified personnel. Servicing is required when the apparatus has been damaged in any way, such as power-supply cord or plug is damaged, liquid has been spilled or objects have fallen into the apparatus, the apparatus has been exposed to rain or moisture, does not operate normally, or has been dropped.

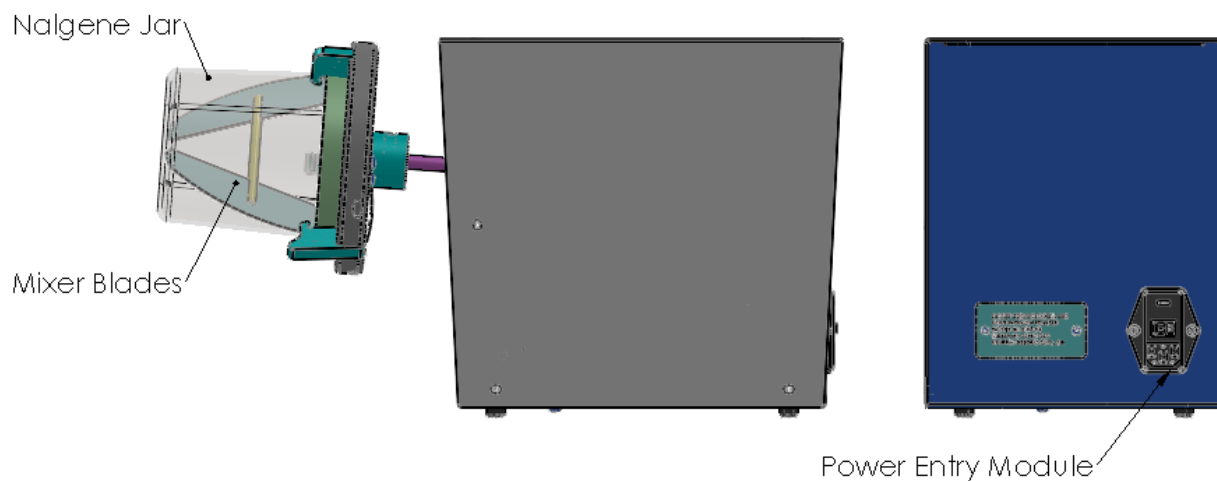
## Introduction

The Bone Marrow Tumbler removes remains of bone marrow from the chips obtained when using the Bone Grinder.

This machine provides a clamp to connect a standard Nalgene jar. A mixing blade is also provided to aid in mixing of its contents. Since the machine has a rotational motion the chips will rotate in the jar releasing or washing away the remaining bone marrow, after which the media is collected and later purified.

**Note:** Nalgene jar is not included.

## Identification of Machine Parts



## Replacement Parts

Description	Part No
Nalgene Jar	PSS 00-2113-1000
Mixer Blades	BMT-MIXER

## Specifications

MODEL NO: BMT-01  
POWER SOURCE: 115 VAC.  
FUSE: 5 Amps

# Troubleshooting

If you encounter any problems, please do not hesitate to contact us at:

Biorep® Technologies, Inc.

3225 NW 112<sup>th</sup> Street  
Miami, FL 33167

Tel: 305-687-8074

Fax: 305-688-8029

E-mail: [info@biorep.com](mailto:info@biorep.com)

Website: [www.biorep.com](http://www.biorep.com)