

SUREFUSER™+

Elastomeric Infusion System



The Surefuser is available in a variety of flow rates and sizes, and can be supplied either empty or pre-filled with a range of common medications.



Please call us on 1800 451 737
to discuss your infusion needs



NIPRO

Your Partner in Health Care

SUREFUSER™ +

SUREFUSER. THE FREEDOM OF AMBULATORY THERAPY

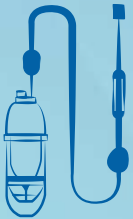
Ch2 Code	Vol.	Surefuser Description	BOX
2014300	50ml	SUREFUSER 50 ML X 1 DAY, 2.1 ml / hr	10
2033341		SUREFUSER 50 ML X 2 DAY, 1.0 ml / hr	10
2027696	100ml	SUREFUSER 100 ML X 1 DAY, 4.2 ml / hr	10
2129959		SUREFUSER 100 ML X 2 DAY, 2.1 ml / hr	10
2027709		SUREFUSER 100 ML X 3 DAYS, 1.4 ml / hr	10
2121391		SUREFUSER 100 ML X 7 DAYS, 0.6 ml / hr	10
2042423	250ml	SUREFUSER 250 ML X 2 HOUR, 125 ml / hr	5
2118467		SUREFUSER 250ML X 1 DAY, 10 ml / hr	5
2129967		SUREFUSER 250ML X 2 DAY, 5 ml / hr	5
2002923		SUREFUSER 250 ML X 5 DAY, 2 ml / hr	5
2045157		SUREFUSER 250ML X 7 DAY, 1.5 ml / hr	5

- Lightweight, single use, silent device promotes mobility and early patient discharge
- Flow rate is confirmed via the bold blue line and scale markings
- Compact design can be worn in a pocket or Nipro Surefuser waist bag



THE SIMPLE, SELF-POWERED SOLUTION FOR ALL INFUSION-RELATED THERAPIES

- Single use elastomeric infusion device with fixed or variable flow rates
- Efficient particulate and self-venting filter (0.2µ) and back-check valve
- Strong port connector plus integrated, anti-kinking infusion line (DEHP-free)
- Flat, ergonomic Flow Control Unit to ensure accuracy and reliability
- Available in 50ml, 100ml, 150ml, 250ml and 300ml sizes; 30min to 7 day



USING SUREFUSER

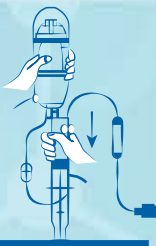
DESIGNED FOR USE IN A WIDE RANGE OF THERAPEUTIC SETTINGS

- Oncology – Chemotherapy drugs
- Antibiotics
- Pain relief – Palliative and Post-operative

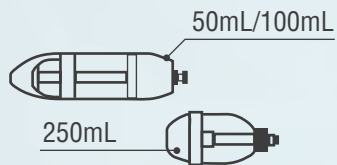


SIMPLY FILL, PRIME AND CONNECT

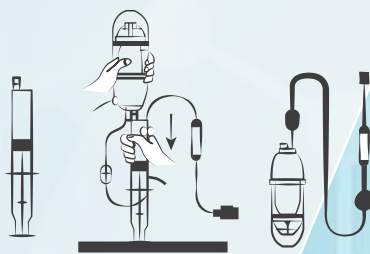
- Fill the Surefuser using a standard syringe (Luer Lock is recommended) connected to the port
- Open the Robert Clamp to prime the infusion line, and attach the included patient label
- Attach the connector to the patient's line, and begin infusion therapy



Balloon body



Operation method



Always tape the flow regulator to the body



Infusion line

