



109422 79-04 Mustang 4L80-TH400 Transmission Crossmember Kit

We recommend our motor mount kit (Part NO. 109423 for 96-04 Mustang) OR (Part NO. 109415 79-95 Mustang) and subframe connector kit (Part NO. 109424) to accompany this transmission kit. Others may be used but we cannot guarantee fitment or compatibility.

1. Must have some sort of rectangle/square tube subframe connector in place that follows the profile of the factory subframe. Crossmember mounts are welded to these and the car.
2. Engine and transmission must be mounted in car with motor mounts and driveline angle set. We shoot for 3 degrees. You will have to remove the factory transmission mount that is spot welded to the floor to fit the 4L80-TH400 in there (96-04 cars only). On 79-95 cars the factory transmission mount might have to be removed from unibody. Some slight massaging of the floor may need to happen for the harness plug and cooler lines to clear properly.
3. Install the included rubber transmission mount onto transmission.
4. Loosely bolt the new transmission crossmember to the rubber mount with supplied hardware. It will only fit one way. Clearance to the floor is close.
5. Locate the crossmember chassis mounts (same left and right). Set one on top of each end of the crossmember. Mark the car and subframe connectors for paint removal.
6. After preparing the metal for welding, we recommend welding the subframe connector to body seam underneath the chassis mounts. Reinstall the chassis mounts on top of the crossmember and loosely install the bolts from the bottom up. Nuts on the top.
7. Square up the crossmember with the car and up and down on each side. Make sure the chassis mounts are tight to the crossmember and crossmember is tight to the rubber mount.
8. Tack weld the chassis mounts to car and remove crossmember for welding.
9. Weld as much of the mounts to car as you can easily reach.
10. Paint mounts and reinstall crossmember.
11. Clearance to floor is extremely tight. Depending on which motor mounts you use, you might have to massage the floor for crossmember clearance. We tried to build a crossmember with as much ground and exhaust clearance as possible while maintaining strength.

Hardware List:

- 4 – 3/8-16 x 1 Bolts
- 4 – 3/8 SAE Washers
- 4 – 3/8x16 Flanged Nuts
- 1 – Transmission Mount
- 2 – Chassis Mounts
- 1 – Crossmember

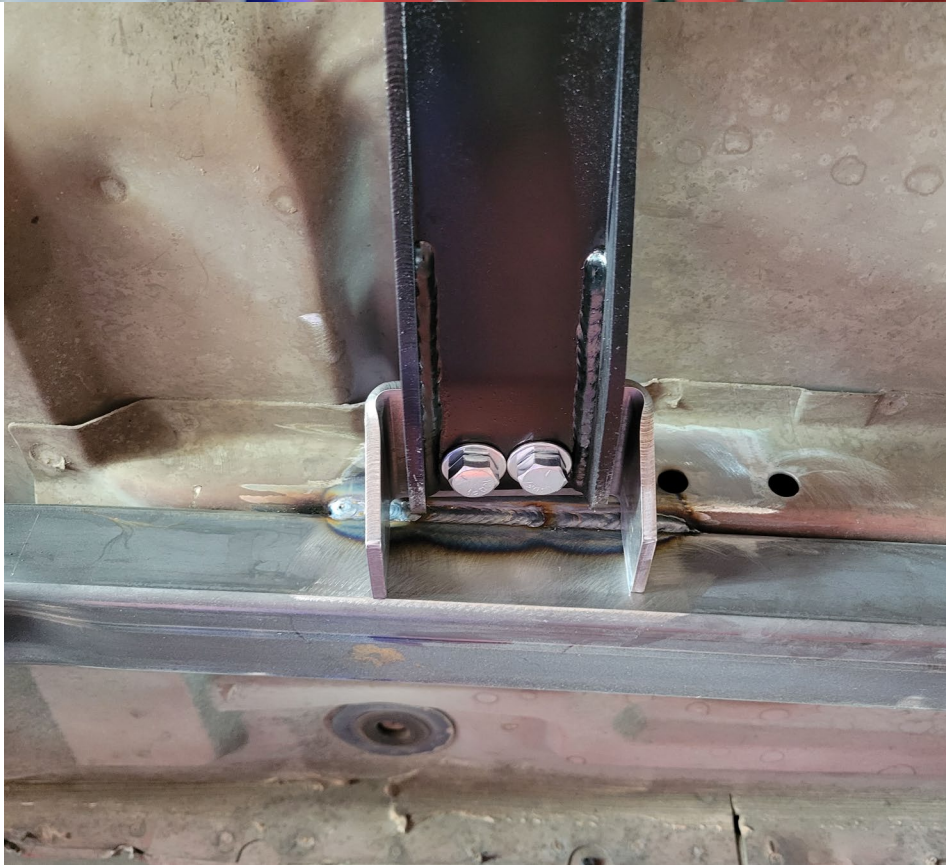
Tin Man Fabrication, Inc.
21461 Aberdeen ST NE
East Bethel, MN 55011

Local 763-753-4265
office@tinmanfabrication.com



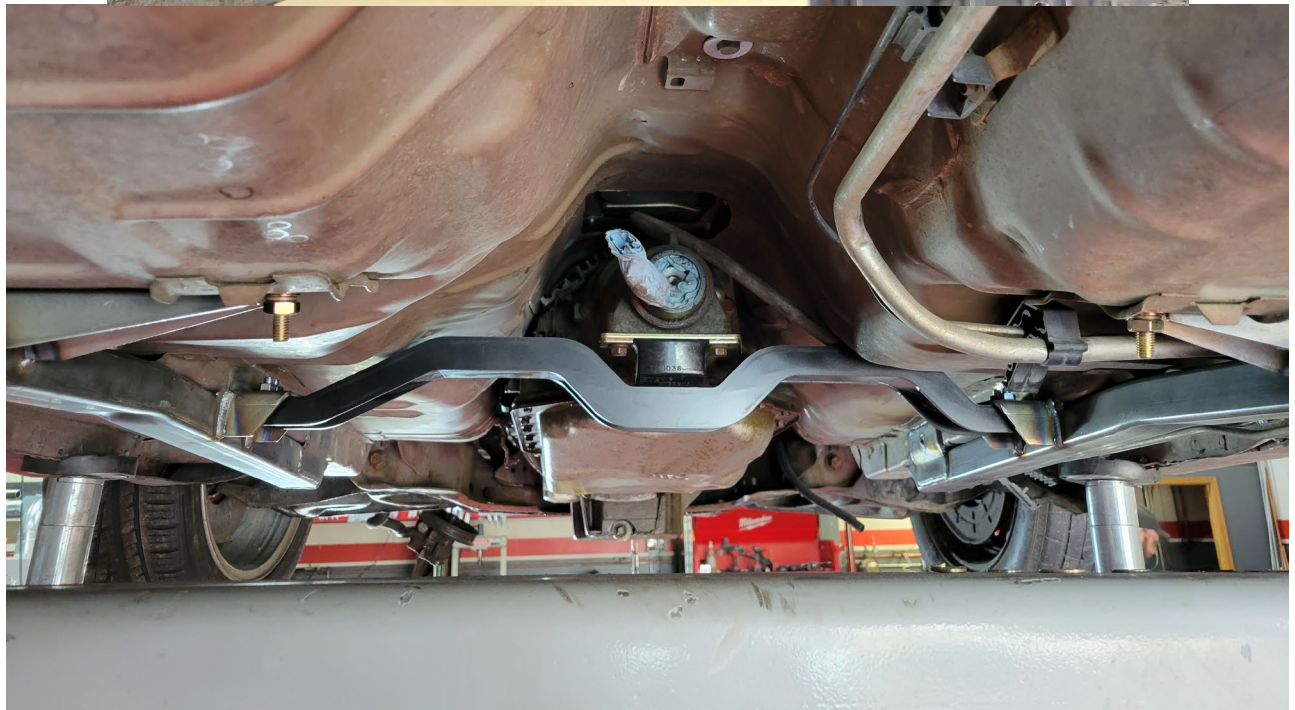
Tin Man Fabrication, Inc.
21461 Aberdeen ST NE
East Bethel, MN 55011

Local 763-753-4265
office@tinmanfabrication.com



Tin Man Fabrication, Inc.
21461 Aberdeen ST NE
East Bethel, MN 55011

Local 763-753-4265
office@tinmanfabrication.com



Tin Man Fabrication, Inc.
21461 Aberdeen ST NE
East Bethel, MN 55011

Local 763-753-4265
office@tinmanfabrication.com



Tin Man Fabrication, Inc.
21461 Aberdeen ST NE
East Bethel, MN 55011

Local 763-753-4265
office@tinmanfabrication.com