

**SAW Filter 1090.0MHz**  
**Part No: MP02892**

**Model: TA0970A**  
**Rev No: 4**

**A. MAXIMUM RATING:**

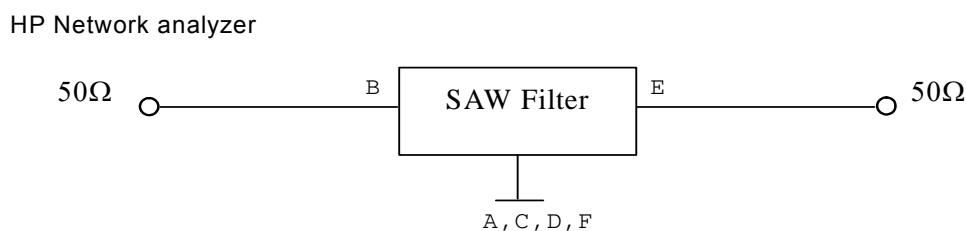
1. Input Power Level: 20dBm
2. DC voltage: 0V
3. Operating Temperature: -40°C to +85°C
4. Storage Temperature: -55°C to +95°C

**B. ELECTRICAL CHARACTERISTICS:**

Characteristics (at 25°C)	Min.	Typ.	Max.
Center frequency Fc (MHz)	-	1090	-
Insertion loss within 1075 ~ 1105MHz IL (dB)	-	2.3	3.0
Amplitude ripple (p-p) within 1085 ~ 1095MHz (dB)	-	0.25	0.5
Attenuation (Reference level from 0dB)			
DC ~ 970MHz (dB)	25.0	30	-
1150 ~ 1300MHz (dB)	25.0	33.5	-
VSWR within 1075 ~ 1105MHz	-	1.8	2.1
Source impedance Z <sub>S</sub> (Ω)	-	50	-
Load impedance Z <sub>L</sub> (Ω)	-	50	-
Temperature Coefficient of Frequency ppm/°C	-	-36	-

Note: No matching network required for operation at 50Ω

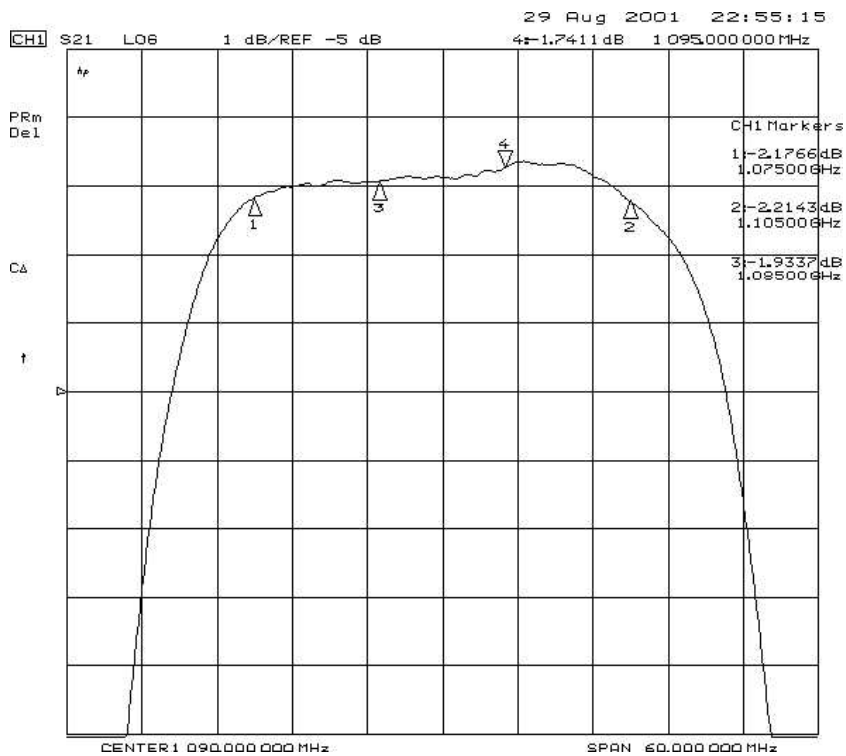
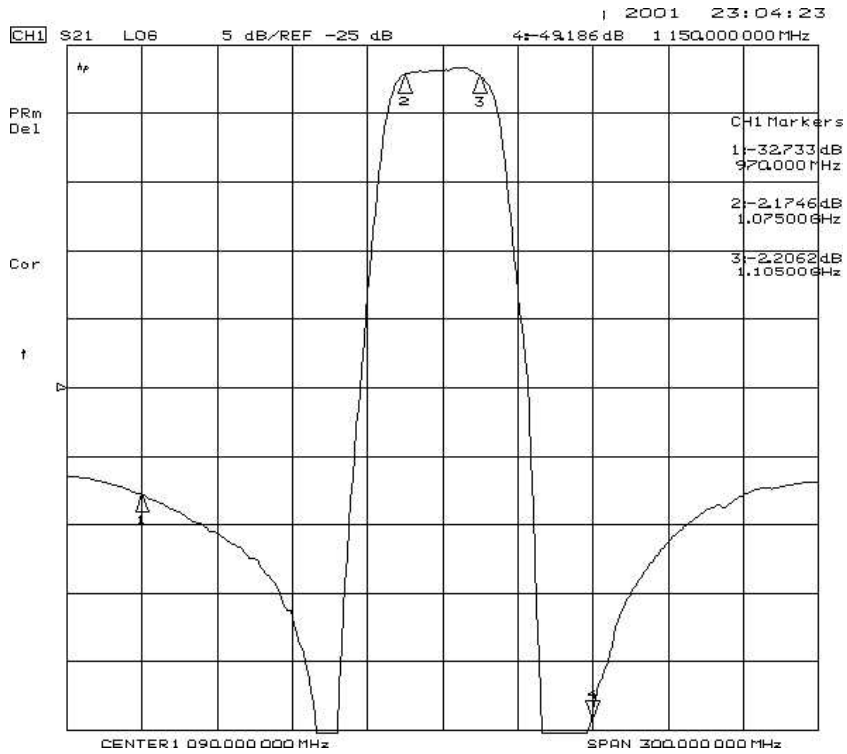
**C. MEASUREMENT CIRCUIT:**



**SAW Filter 1090.0MHz**  
**Part No: MP02892**

**Model: TA0970A**  
**Rev No: 4**

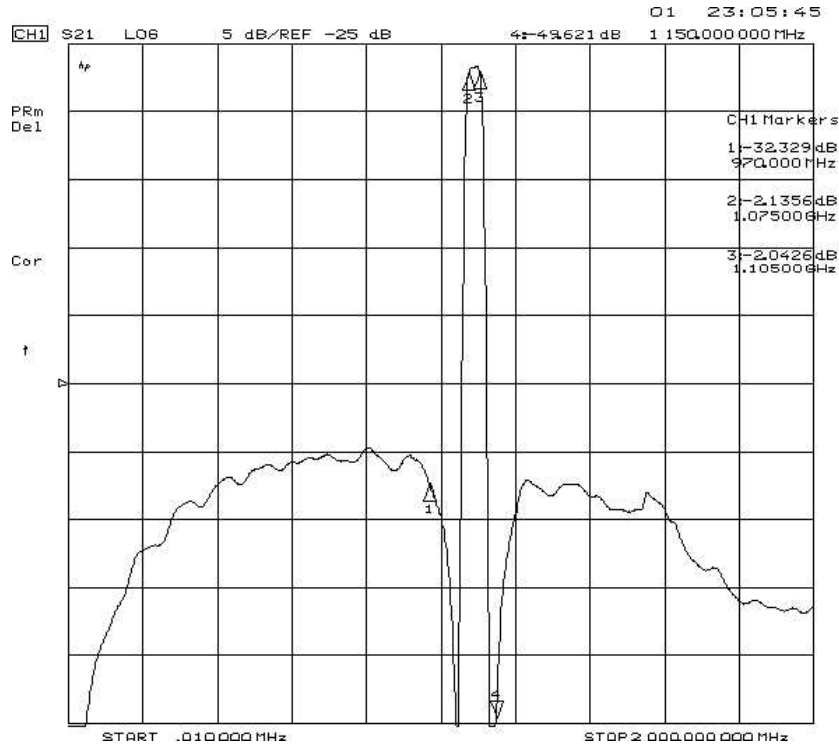
**D. FREQUENCY CHARACTERISTICS:**



**SAW Filter 1090.0MHz**  
**Part No: MP02892**

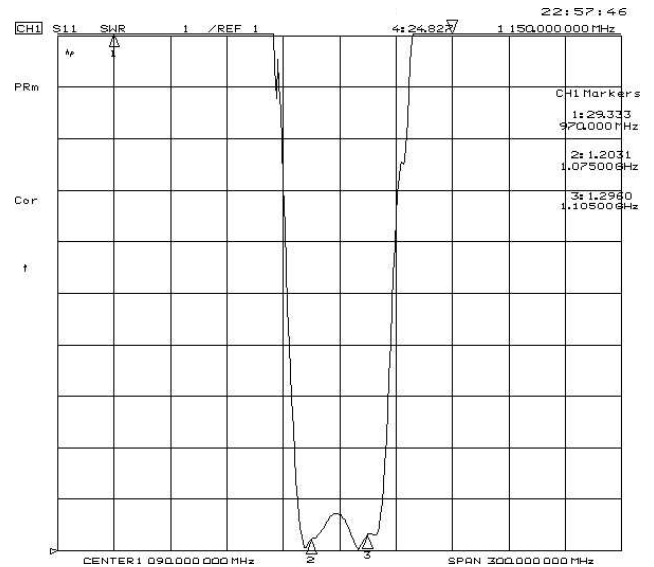
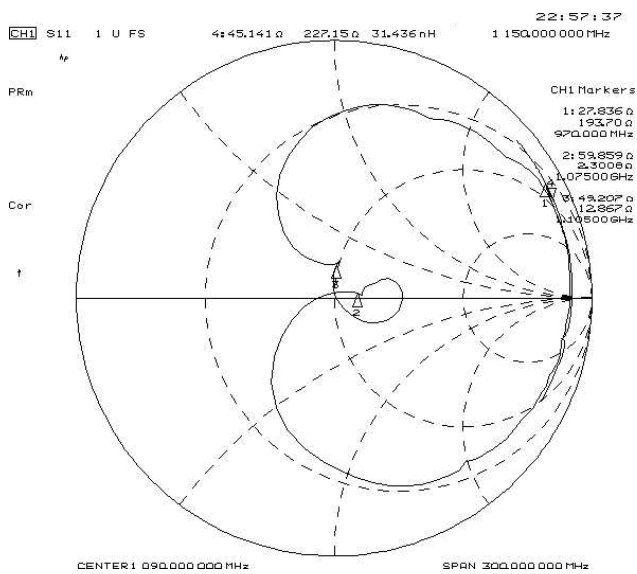
**Model: TA0970A**  
**Rev No: 4**

1. Wideband



2. Reflections Functions

Smith Chart VSWR





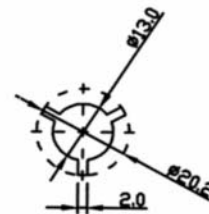
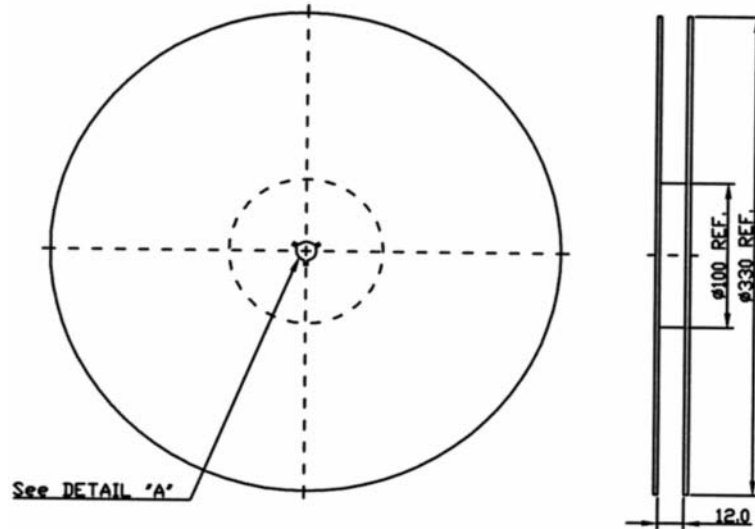
**SAW Filter 1090.0MHz**  
**Part No: MP02892**

**Model: TA0970A**  
**Rev No: 4**

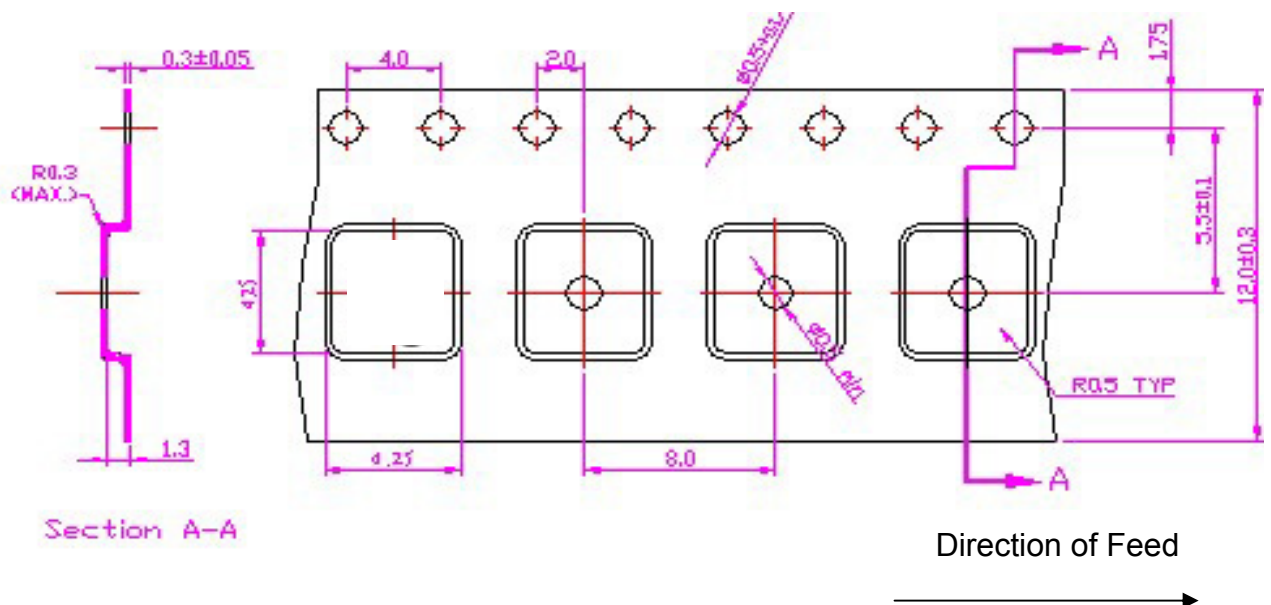
**G. PACKING:**

1. Reel Dimension

(Reel Count: 7" = 1000; 13" = 3000)



2. Tape Dimension



**SAW Filter 1090.0MHz**  
**Part No: MP02892**

**Model: TA0970A**  
**Rev No: 4**

**H. RECOMMENDED REFLOW PROFILE:**

1. Preheating shall be fixed at 150~180°C for 60~90 seconds.
2. Ascending time to preheating temperature 150°C shall be 30 seconds min.
3. Heating shall be fixed at 220°C for 50~80 seconds and at 245~260°C peak (min. 10sec).
4. Time: 2 times.

