



## Installation Instructions

**ARK Suspension  
Front Strut Bar  
(ST0801-0210F)  
for  
2010+ Kia Forte (All Models)**

[www.arkperformanceusa.com](http://www.arkperformanceusa.com)

---

**Congratulations on purchasing an ARK Performance strut bar!** Please read and understand the installation instructions before beginning work on the installation of your new ARK Performance strut bar. If you do not fully understand the instructions, please give us a call at 909-947-1275 or email us at [info@arkperformanceusa.com](mailto:info@arkperformanceusa.com)

We recommend that the strut bar be **installed by someone qualified for this work or by a certified mechanic** with access to the appropriate hand or power tools. It is also recommended that proper jacks and jack stands be used. By installing these ARK Performance lowering springs, you indicate that you have read the installation instructions and you agree with the terms and conditions stated.

It is your responsibility to **follow the installation instructions provided** for this ARK Performance strut bar and exercise all necessary safety precautions. ARK Performance assumes no responsibility for damages occurring from improper installation, operation, maintenance, or from incompatibility with other manufacturer's products.

### **Important Information:**

#### **Exclusion of Certain Liability**

1. The manufacturer, importer, and dealer of ARK Performance products hold no responsibility for any incidental damage such as personal injury or any other damages due to improper installation or operation of ARK Performance strut bars.
2. ARK Performance will not warranty any damages caused by improper installation, use, and maintenance of the ARK Performance strut bar. The warranty is limited to defects that are recognized by our technical department, this excludes items subject to normal wear. This warranty is void in the case of an accident, modification, improper use, or competition use.
3. Do not install any ARK Performance strut bars on a vehicle model for which it was not intended for.
4. Technical specifications of ARK Performance strut bars and related products are subject to change without notice.
5. Before removing the original strut bar from your vehicle if necessary, please compare the parts that you received with the list of materials provided in the installation instructions. If anything is missing, contact ARK Performance before beginning installation.
6. The instructions for installation should serve as a guideline only, actual installation of the lowering springs may not correspond with the pictures entirely.
7. The process of uninstalling the original strut bar, if necessary, may vary depending on the existing strut bar on the vehicle, so please follow the original suspension manufacturer's instructions for removal.

#### **Trademarks**

The ARK Performance logo is a registered trademark of ARK Performance Inc. USA.

#### **ARK Performance website**

Information about ARK Performance strut bars and related products is available on the ARK Performance website at: <http://www.arkperformanceusa.com/>

#### **Copyright**

No part of the ARK Performance strut bar or its documentation may be reproduced or distributed in any form or by any means without the authorization and permission from ARK Performance Inc. USA.

© ARK Performance Inc. USA. All rights reserved.



## Contents

- Front Strut Bar—1
- Mounting Bracket—2
- Bolt—2
- Nut—2
- Washer—2
- Lock Washer—2

## Tools Required

- Socket Wrench/Wrench:
  - 12 mm
  - 14 mm
  - 17 mm
  - 19 mm
- Socket Wrench Extension
- Lubricant (WD-40)
- Original scissor jack that came with the vehicle or something equivalent to it

## Warning

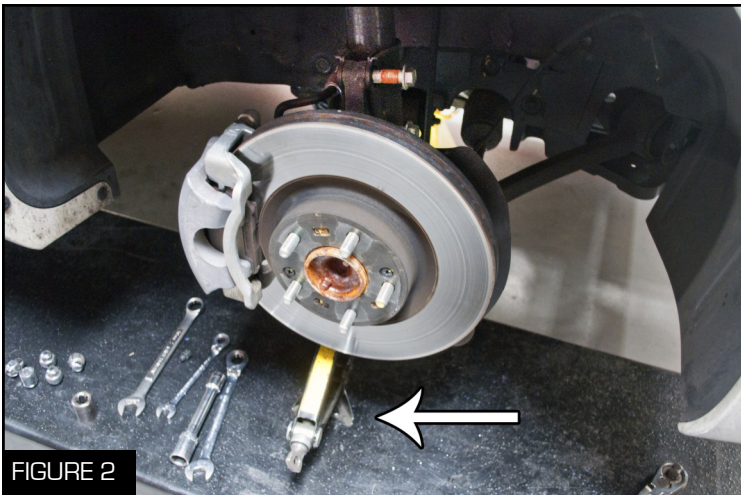
- Before removing the original springs, be sure to read over the installation instructions and fully understand them.
- If any items in the package are missing please contact your authorized dealer before installation.
- We advise you to have an experienced person or certified mechanic install the lowering springs.
- Loosely fasten all nuts and bolts until everything is installed, then tighten them down to the proper torque specs as you align the suspension parts properly.
- These instructions are specific to the 2010+ Hyundai Genesis Coupe (All Models). However, please be sure to specify the exact year when purchasing lowering springs.

# Removal of OEM Front Springs



1. Properly jack up the vehicle on flat, level ground and support the vehicle on proper jack stands (Figure 1)

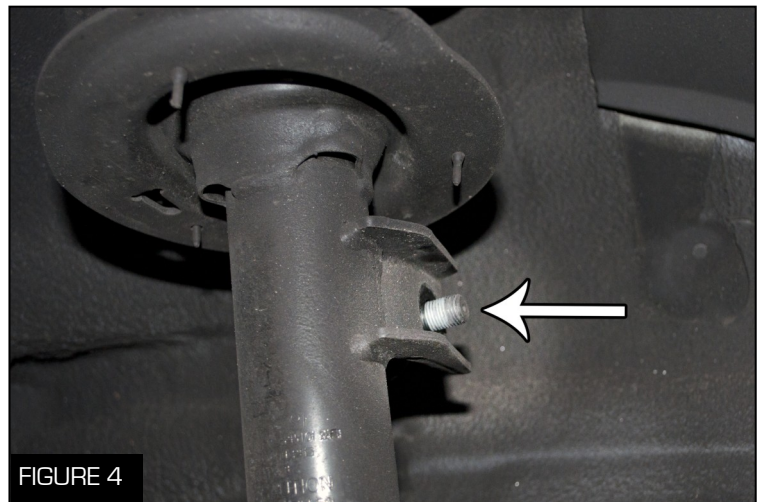
2. Begin with removing the front wheels using the proper socket or key for the lug nuts or wheels locks (Figure 1)



3. Place the OEM scissor jack under the brake rotor to support it before unbolting anything (Figure 2)

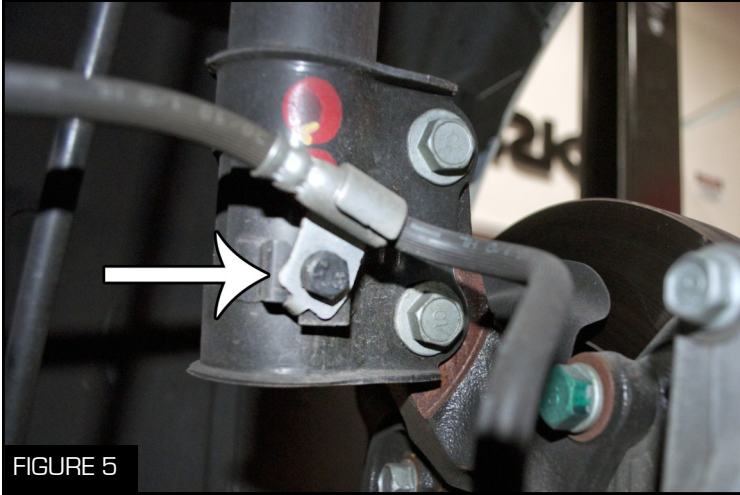


4. Unbolt the nut on the center of the strut tower using a 14 mm socket wrench (Figure 3)

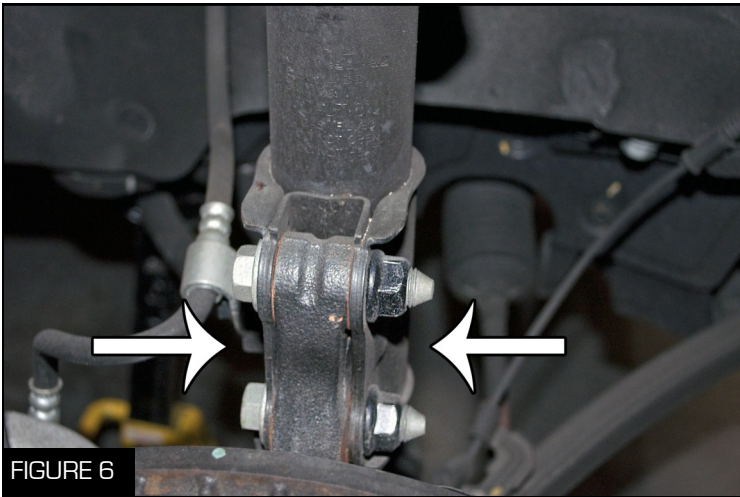


5. Unbolt the sway bar end link from the strut using a 19 mm socket wrench (Figure 4)

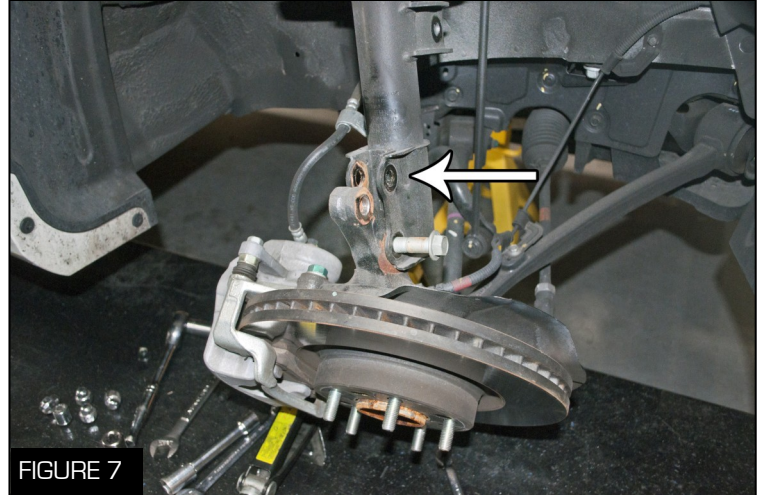
## Removal of OEM Front Springs



6. Unbolt the brake line using a 12 mm socket wrench and move it out of the way (Figure 5)



7. Spray the two nuts and bolts with a lubricant and let them soak for a few minutes (Figure 6)



8. Unbolt the top bolt first using a 17 mm socket wrench on the head and a 19 mm socket wrench on the nut, the brake assembly will move at this point (Figure 7)

9. Now unbolt the lower bolt using the same tools and slowly lower the brake assembly further with the OEM scissor jack (Figure 7)



10. Unbolt the three bolts on the strut using a 14 mm socket wrench and remove the strut/spring from the car (Figure 8)

## Removal of OEM Front Springs



11. Remove the strut and spring from the vehicle (Figure 9)

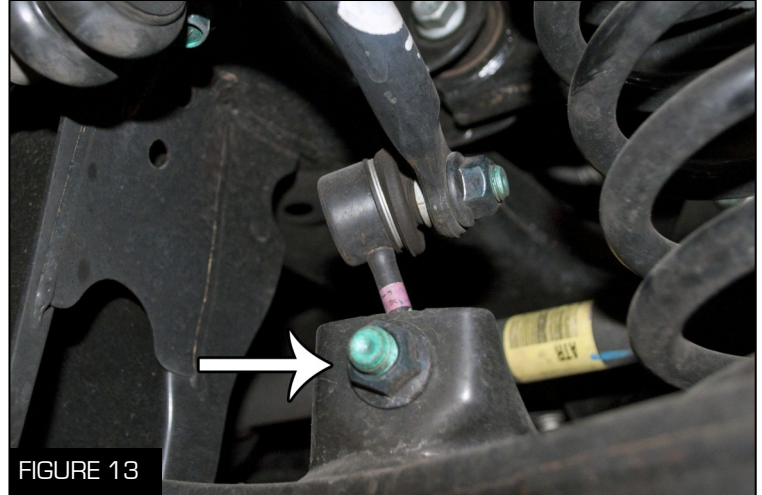
12. Put the new ARK Performance coilover into place and loosely bolt on the top piece with the center bolt using a 17 mm socket wrench (Figure 9)

13. Repeat all steps in reverse order to install the struts/springs back into the vehicle.

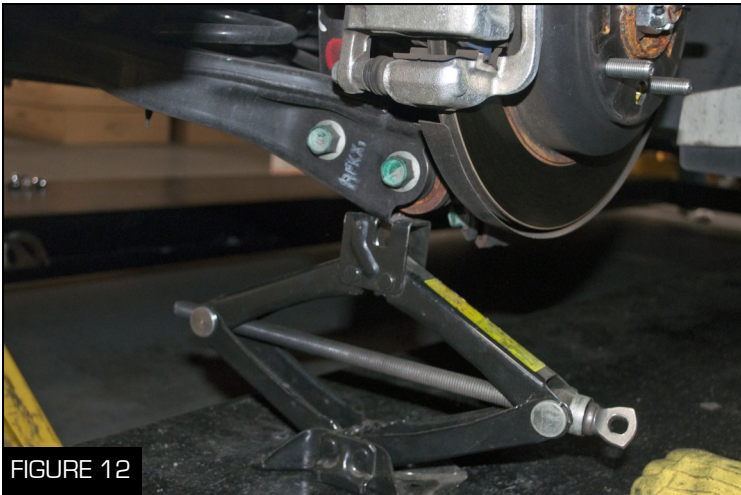
## Removal of OEM Rear Springs



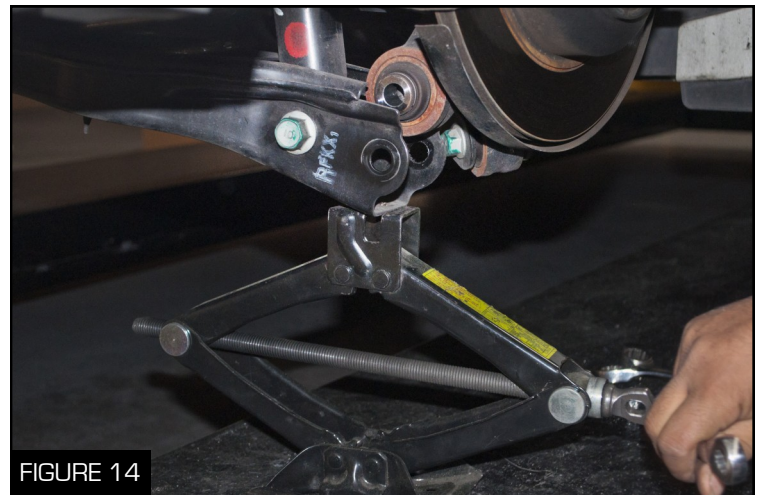
1. Remove the rear wheels using the proper socket or key for the lug nuts or wheel locks (Figure 11)



3. Unbolt the sway bar using a 17 mm socket wrench and move the link out of the way (Figure 13)



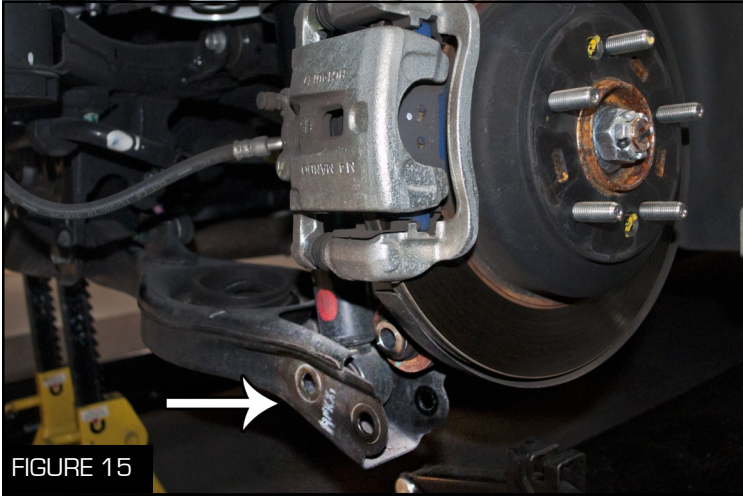
2. Put the scissor jack under the brake assembly to support it (Figure 12)



4. Remove the bolt and nut towards the outside of the vehicle using a 19 mm socket wrench for both nut and bolt (Figure 14)

5. Slowly lower the brake assembly until it stops (Figure 14)

## Removal of OEM Rear Springs



6. Remove the second bolt and nut towards the inside of the vehicle using a 19 mm socket wrench for both nut and bolt (Figure 15)

7. Remove the OEM spring from the vehicle (Figure 15)

FIGURE 16

8. Unbolt the top of the strut tower using a 15 mm socket wrench then remove the strut from the vehicle (Figure 16)

9. Follow the instructions in reverse to complete the installation.





## First Operation/Maintenance

Be sure to check that the wheel lug nuts are tightened down to the proper torque specifications.

Take the vehicle for a test drive and listen for any odd clunking noises or vibrations. If there are any, go back through the installation instructions and be sure everything is properly tightened.

Be sure to take the vehicle to a professional suspension alignment shop to have your vehicle re-aligned after installing ARK Performance lowering springs.

