



THERMAPEN® ONE BLUE

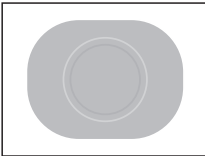


Operating Instructions

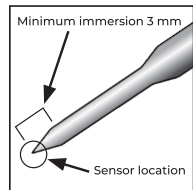
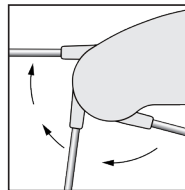
CONNECTION - Use a Bluetooth Low Energy iOS or Android™ host device with a compatible app installed to make connections to the instrument. When connected, the Bluetooth symbol will show in the display.

Please note: No readings are stored in the instrument. When not connected, the instrument can still be used. Readings are taken and displayed every 1 second.

TRANSFER BUTTON MEASURE/TRANSFER – When connected, press to measure and transfer result via Bluetooth.



INSTRUMENT OPERATION – The instrument is switched on by unfolding the probe and turned off by folding the probe until fully located into the rubber probe retainer. The probe should not be rotated more than 180 degrees as damage will occur. It is recommended to store the probe in the closed position, when not in use.



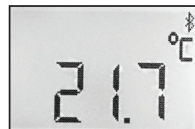
Apply the tip of the probe to the substance, medium or surface to be measured. The sensor is located at the tip of the probe, therefore the minimum depth insertion should be 3 mm.



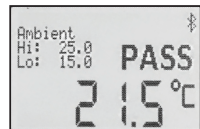
The probe tip is very sharp and therefore caution should be taken when using. Care should also be taken when closing the probe after taking hot temperatures as the probe may remain hot.

SETTINGS - Adjustable via the app and include: °C or °F, Measurement Interval, Display Sleep Interval, Connection Status Display, Display mode, Auto-off Interval, Sensor Name and High/ Low Alarm levels. All settings are stored in the instrument and are downloaded to the app on connection.

DISPLAY – The display has two modes, basic mode and enhanced mode. Basic mode will be shown when not connected to Bluetooth. Enhanced mode will be shown when connected and enabled via settings.



Basic



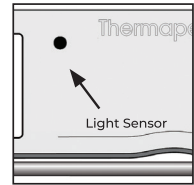
Advanced

Please note: Enhanced display mode, Sleep Interval, and Connection Status Display Settings, are only available when using software compatible with the latest SDK/Protocol. When using the unit with older software, the display will remain in Basic mode at all times.

ROTATIONAL DISPLAY - The display will rotate 180° depending on the direction the instrument is pointing so that it can be used in either hand.


DISPLAY SLEEP INTERVAL – the display will 'SLEEP' after a settable time (default 30 seconds), when no movement has been detected. The instrument will remain connected whilst in display sleep and will wake up when movement is detected.

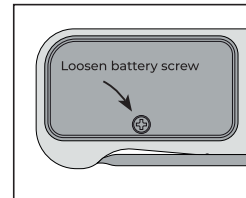
INTELLIGENT BACKLIGHT - features a light sensor which will automatically turn the backlight on in low light conditions. The backlight will remain on for 10 seconds and automatically turn off if no movement is detected.



AUTO-OFF - If the instrument is not connected to Bluetooth within the set auto-off interval, it will shut down. The timer is reset with any movement or button press.

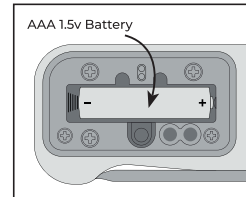
STORAGE & CLEANING – Clean the instrument regularly with an anti-bacterial probe wipe to avoid potential food-borne bacteria growth. The thermometer should be stored between -20 to 60 °C. **WARNING:** IPA and other solvents may cause damage to the case and screen of this instrument.

BATTERY REPLACEMENT - A battery symbol  indicates that the batteries will need replacing. The instrument continues to measure accurately but we recommend that the batteries be changed as soon as possible.



Battery Cover

To replace the battery, loosen the battery cover screw using a Pozi (PZ1) screwdriver to remove the battery cover. Replace with a single AAA battery noting the polarity. Tighten the battery cover screw until the battery cover is snug onto the seal. Do not over-tighten.



AMBIENT- The ambient operating range is -20 to 50 °C.

LCD ERROR MESSAGES - If the ambient temperature falls outside the operational range, then either 'Amb-Lo' or 'Amb-Hi' will be displayed. This will continue until the ambient temperature has returned within the limits. The thermometer should be allowed plenty of time (minimum 30 minutes) to stabilise to the working/ room temperature. 'Hi-Err' or 'Lo-Err' will be displayed when the temperature being measured is outside of the instrument's measurement range. 'Error' will be displayed if the instrument has developed a fault.

GUARANTEE - This instrument carries a two-year guarantee against defects in either components or workmanship. During this period, products that prove to be defective will, at the discretion of ETI, be either repaired or replaced without charge. This guarantee does not apply to sensors/probes, where a six-month period is offered. The product guarantee does not cover damage caused by fair wear and tear, abnormal storage conditions, incorrect use, accidental misuse, abuse, neglect, misapplication, or modification. Full details of liability are available within ETI's Terms & Conditions of Sale at etiltd.com/terms. In line with our policy of continuous development, we reserve the right to amend our product specification without prior notice.

The *Bluetooth*[®] word mark and logos are registered trademarks owned by the Bluetooth SIG, Inc. and any use of such marks by ETI is under license.

Google Play and the Google Play logo are trademarks of Google Inc.

Apple, the Apple logo, iPhone, and iPod touch are trademarks of Apple Inc., registered in the U.S. and other countries. App Store is a service mark of Apple Inc., registered in the U.S. and other countries.

iOS is a trademark or registered trademark of Cisco in the U.S. and other countries and is used under license. Android is a trademark of Google Inc



Manufactured by
Electronic Temperature Instruments Ltd
Worthing · West Sussex · BN14 8HQ
01903 202151 · sales@etiltd.com · etiltd.com

