

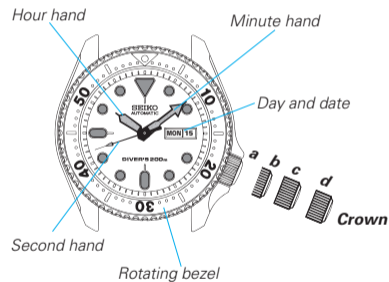
CONTENTS

	Page
WARNING/ CAUTION	3
PRECAUTIONS ON USING THE WATCH FOR DIVING	5
FEATURES	8
HOW TO START THE WATCH.....	8
TIME/CALENDAR SETTING	10
ROTATING BEZEL	14
TO PRESERVE THE QUALITY OF YOUR WATCH.....	15
LUMIBRITE.....	17
SPECIFICATIONS	18

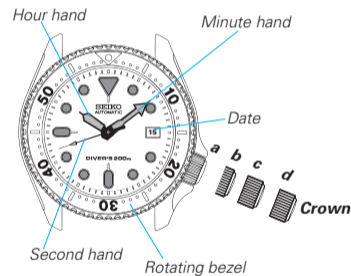
☆ For the care of your watch, see "TO PRESERVE THE QUALITY OF YOUR WATCH" in the attached Worldwide Guarantee and this Instruction Booklet.

SEIKO AUTOMATIC DIVER'S WATCH Cal. 4R15/4R16/4R35/4R36/7S26/7S35/7S36

● 4R16/4R36/7S26/7S36



● 4R15/4R35/7S35



a: Screwed-in position b: Normal position c: First click d: Second click

FEATURES

200 METER WATER RESISTANCE

- Suitable for scuba diving

ROTATING BEZEL

- Elapsed time measurement during diving (up to 60 minutes)

SCREW DOWN CROWN

SECOND HAND HALT MECHANISM (4R35/4R36)

HOW TO START THE WATCH (4R15/4R16/7S26/7S35/7S36)

This is an automatic mechanical watch.

● To initially start your watch:

Swing it from side to side in a horizontal arc for about 30 seconds.

* If the watch is worn on the wrist, the mainspring will be wound automatically through normal wrist movement.

* If the watch is used without being wound up sufficiently, gain or loss of the watch may result. To avoid this, wear the watch for more than 8 hours a day.



TIME/CALENDAR

4R16/4R36/7S26/7S36

- Hour, minute & second hands
- Date
- Day

4R15/4R35/7S35

- Hour, minute & second hands
- Date

HOW TO START THE WATCH (4R35/4R36)

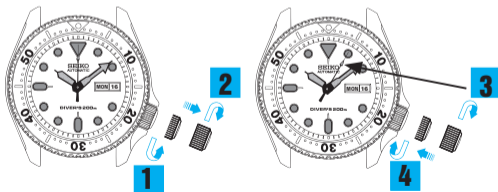
This watch is an automatic watch equipped with a manual winding mechanism.

● To initially start your watch:

If your watch is completely stopped, it is recommended that you manually wind the mainspring by turning the crown.

● How to manually wind the mainspring by turning the crown

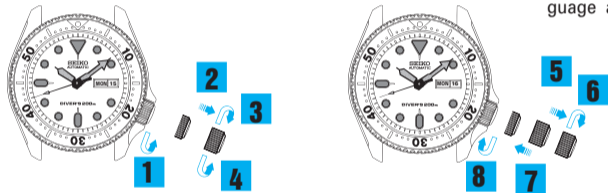
1. Unlock the crown by turning it counterclockwise.
2. Slowly turn the crown clockwise to wind the mainspring.
3. Continue to turn the crown until the mainspring is sufficiently wound. The second hand will start moving.
4. Lock the crown by turning it clockwise while pressing it.



* The winding operation for 4R35 and 4R36 are the same.

TIME/CALENDAR SETTING (4R16/7S26/7S36)

- 1 Unlock the crown by turning it counterclockwise.
- 2 Pull out the crown to the first click.
- 3 Turn the crown clockwise until the previous day's date appears.
- 4 Turn the crown counterclockwise until the previous day of the week in the desired language appears.

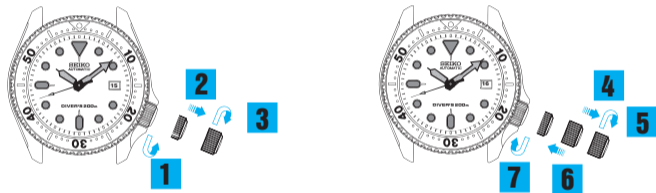


- 5 Pull out the crown to the second click.
- 6 Turn the crown to advance the hands until the date and day change to the next. When they have changed, the time is set for the A.M. period. Keep advancing the hands to set the correct time.
- 7 Push back the crown.
- 8 Lock the crown by turning it clockwise while pressing it.

*Do not change the day or the date between 9:00 p.m. and 4:00 a.m.

TIME/CALENDAR SETTING (4R15/7S35)

- 1 Unlock the crown by turning it counterclockwise.
- 2 Pull out the crown to the first click.
- 3 Turn the crown clockwise until the previous day's date appears.



- 4 Pull out the crown to the second click.
- 5 Turn the crown to advance the hands until the date change to the next. When it has changed, the time is set for the A.M. period. Keep advancing the hands to set the correct time.
- 6 Push back the crown.
- 7 Lock the crown by turning it clockwise while pressing it.

*Do not change the date between 9:00 p.m. and 1:00 a.m.

TIME/CALENDAR SETTING (4R36)

- 1 Unlock the crown by turning it counterclockwise.
- 2 Pull out the crown to the first click.
- 3 Turn the crown counterclockwise until the previous day's date appears.
- 4 Turn the crown clockwise until the previous day of the week in the desired language appears.



- 5 Pull out the crown to the second click when the second hand is at the 12 o'clock position. (The second hand stops on the spot).
- 6 Turn the crown to advance the hands until the date and day change to the next. When they have changed, the time is set for the A.M. period.
- Keep advancing the hands to set the correct time.
- 7 Push back the crown in accordance with a time signal.
- 8 Lock the crown by turning it clockwise while pressing it.

*Do not change the day or the date between 9:00 p.m. and 4:00 a.m.

TIME/CALENDAR SETTING (4R35)

- 1 Unlock the crown by turning it counterclockwise.
- 2 Pull out the crown to the first click.
- 3 Turn the crown counterclockwise until the previous day's date appears.



- 4 Pull out the crown to the second click when the second hand is at the 12 o'clock position. (The second hand stops on the spot).
- 5 Turn the crown to advance the hands until the date change to the next. When it has changed, the time is set for the A.M. period.
- Keep advancing the hands to set the correct time.
- 6 Push back the crown in accordance with a time signal.
- 7 Lock the crown by turning it clockwise while pressing it.

*Do not change the date between 9:00 p.m. and 1:00 a.m.