



— QUICK START GUIDE —

www.GenesisPreserve.com

WARNINGS & SAFEGUARDS

WARNING: Contains gas under pressure. Do not puncture except in Genesis device. Do not discharge in face. Do not store near heat or open flame-exposure to temperatures above 130°F may cause contents to vent or cause bursting. Never discard tank or capsule into fire or incinerator. Store and use with adequate ventilation.

DO NOT REFILL.

Keep out of reach of children.

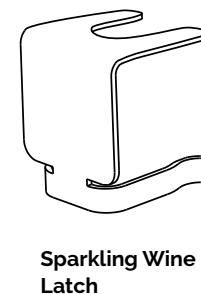
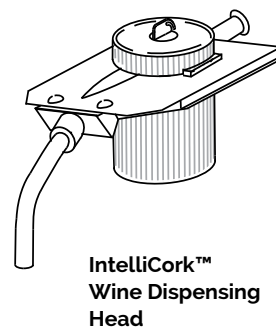
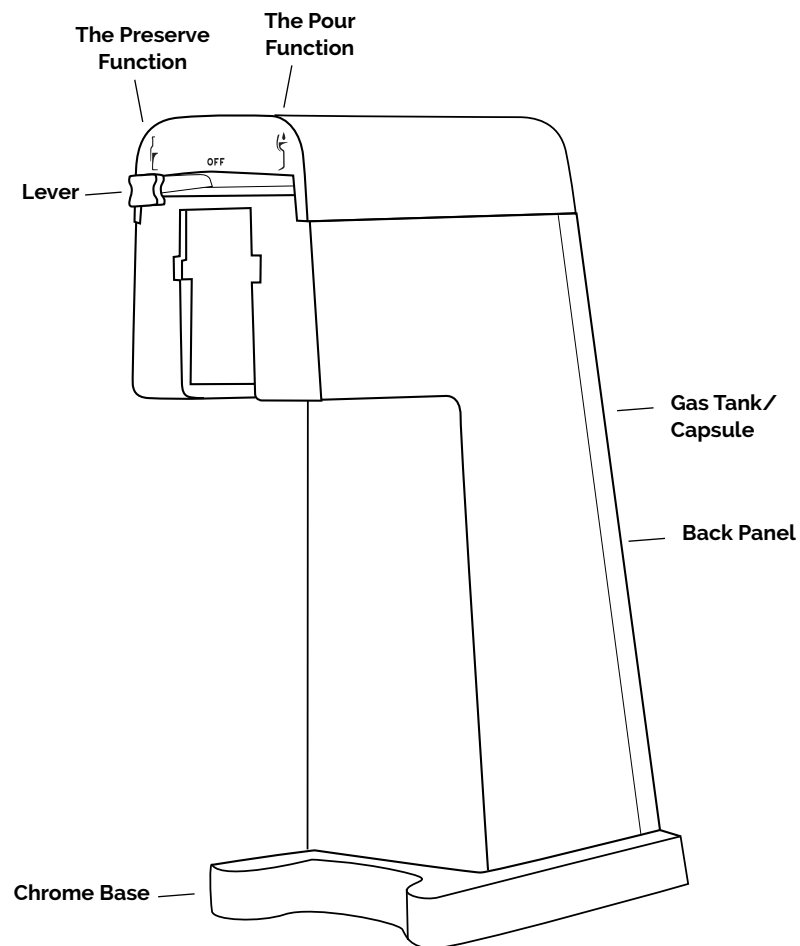
UNPACKING GENESIS

1. Remove all protective plastic and cardboard packaging
2. Ensure you have received all the parts included in your Genesis purchase. Please refer to www.genesispreserve.com for the contents list.
3. Store Genesis on an even clean surface.

USE & CARE

1. Read all instructions before using.
2. Use only as directed. Use for any other purpose voids warranty and may cause damage.
4. Do not submerge your Genesis in any liquid.
5. Wash the IntelliCork Sparkling and Wine heads with warm water and mild soap.
6. Do not attempt to pour Sparkling wine or Champagne. The Genesis system only preserves Sparkling varieties.
7. Do not attempt to repair. Contact Customer Service.
8. For more information visit genesispreserve.com

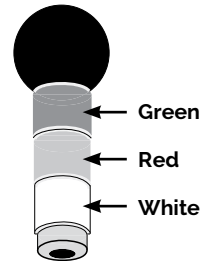
GENESIS SYSTEM OVERVIEW



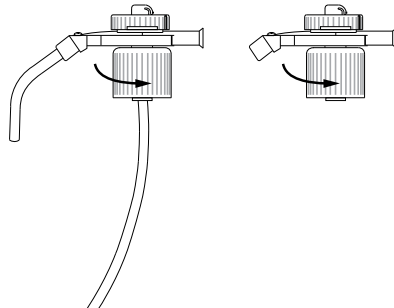
PREPARING YOUR WINE

- a. Remove/pop the cork or unscrew the cap from your wine bottle.

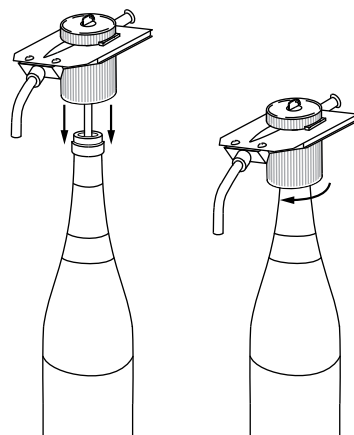
- b. Insert the **Bottle Sizing tool** into the bottleneck to select the correct (color-coded) gasket size. Note: The red gasket should work with most wines bottled in North America. If you need to change the gasket, please follow the instructions in Step 8.



- c. Select the correct IntelliCork Wine Dispensing head and make sure the collar is fully untightened by twisting it to the right.



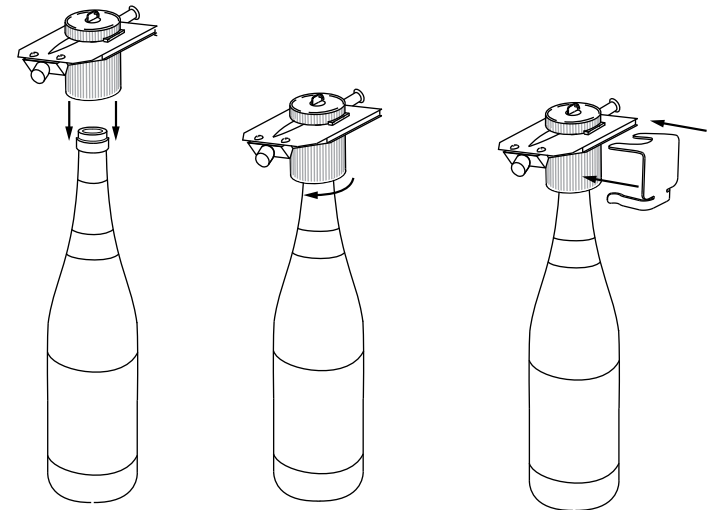
- d. For **still wine**, insert a clean pick up tube to the bottom of the **IntelliCork Wine Dispensing head** and insert into the bottle. Turn the spout to align with the bottle label and use one hand to push the head firmly down onto the bottleneck. Use the other hand to tighten the collar by twisting to the left.



- d. If you are preserving **sparkling wine**, you will use an IntelliCork Sparkling head with either a blue or white gasket. The IntelliCork should easily fit on top of the bottle. If the blue gasket fits too loosely, you will want to use a white gasket instead by following the instructions in Step 8.

Insert the correct size **IntelliCork Sparkling Wine Head** without a pick up tube into the bottle. Use one hand to push the head firmly down onto the bottle-neck. Use the other hand to tighten the collar by twisting to the left.

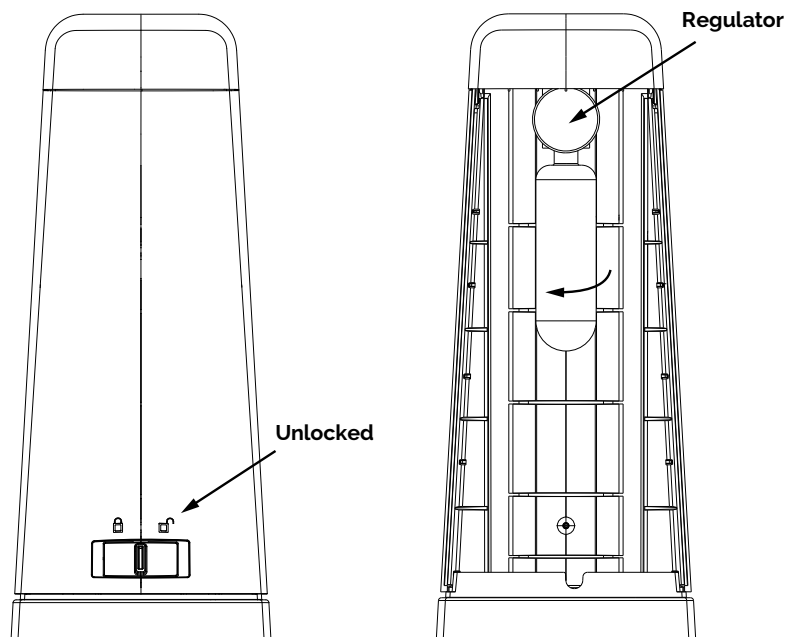
Next, attach the **latch** to the head by placing in between the top of the head collar and snapping into place as shown.



INSTALLING YOUR WINEGAS™

Follow these instructions for model GEN-00

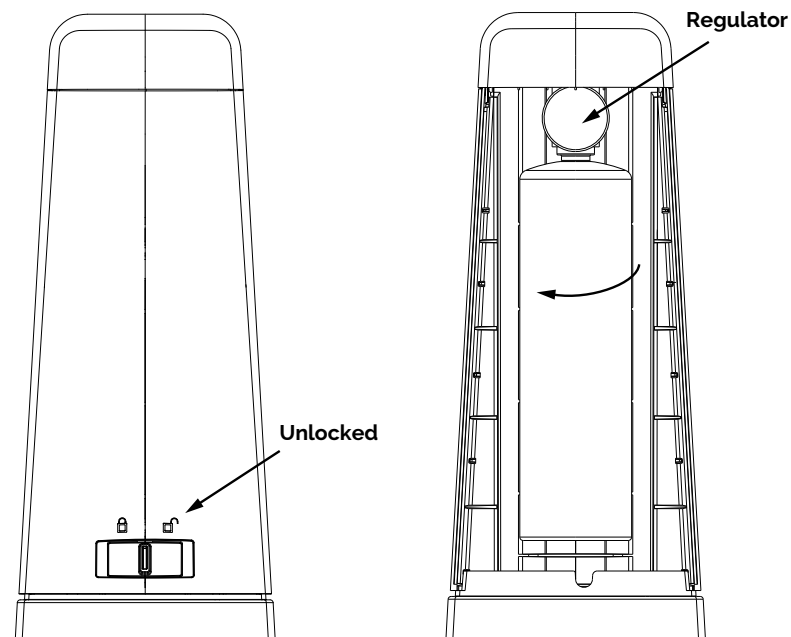
- Unlock** and remove the back panel.
- Take your WineGas capsule and **insert** into the bottom of the mounted regulator.
- Secure the capsule by **turning it clockwise** until it is fully secured into the mounted regulator. When the capsule is fully secured, the gauge on the regulator should rise to show full pressure reading.



Note: For model GEN-00 the WineGas capsule reading should be 2700PSI. The gauge will show less pressure as the gas is used.

Follow these instructions for model GEN-PRO

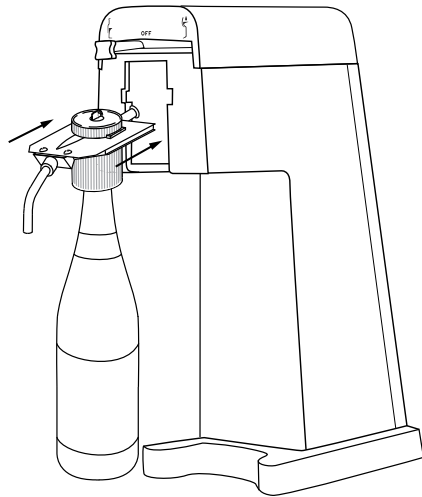
- Unlock** and remove the back panel.
- Take your WineGas tank and **insert** into the bottom of the mounted regulator.
- Secure the tank by **turning it clockwise** until it is fully secured into the mounted regulator. When the tank is fully secured, the gauge on the regulator should rise to show full pressure reading.



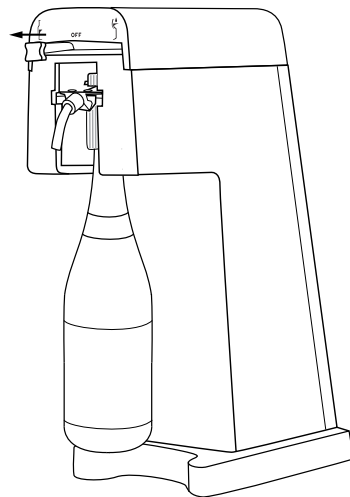
Note: For model GEN-PRO the WineGas tank reading should be 500PSI. The gauge will show less pressure as the gas is used.

PRESERVING YOUR WINE

- a. Place the IntelliCork head into the Genesis system.

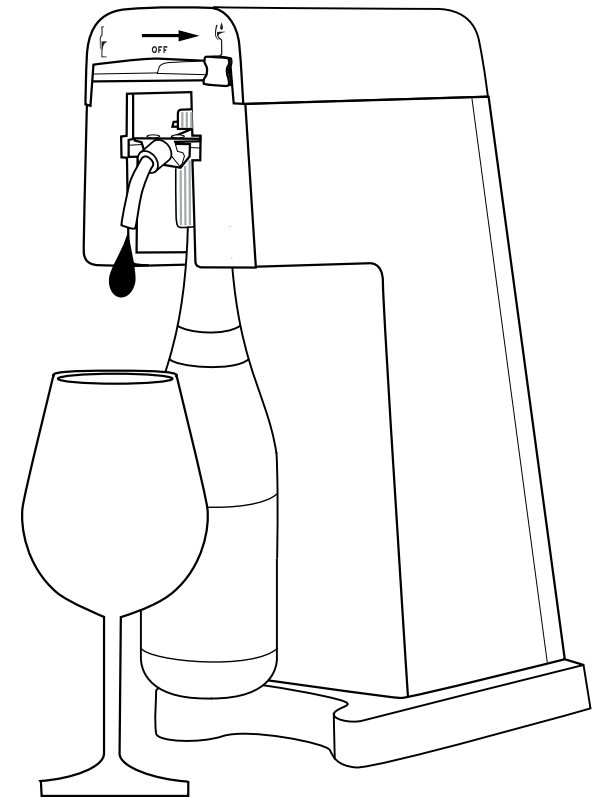


- b. Slide the lever to the left for 3-5 seconds to purge the air out of the bottle and replace with WineGas™. From this point forward, no air will be allowed to make contact with your wine.



POURING YOUR STILL WINE

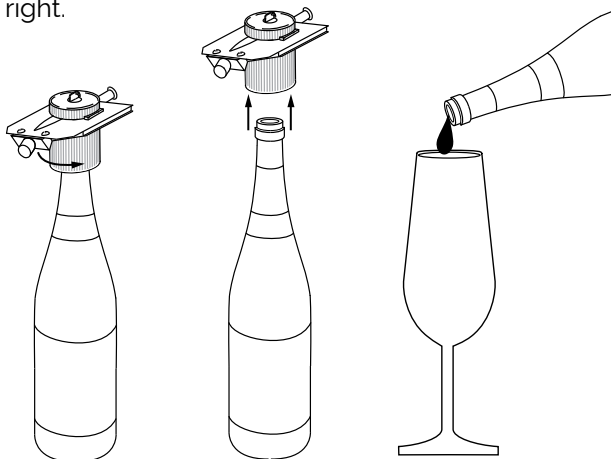
- a. If you are preserving **still wine** you can now pour one or more glasses of wine by sliding the lever to the right. The pressurized gas will cause the wine to pour into your glass.



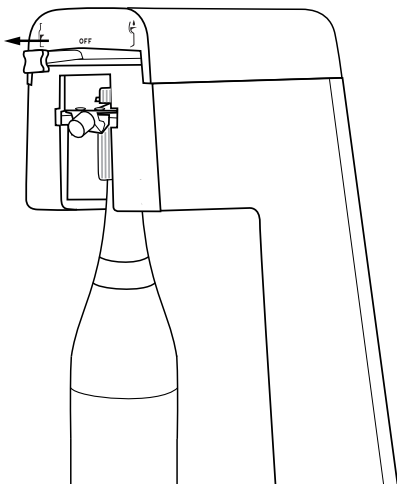
POURING YOUR SPARKLING WINE

- a. If you're preserving **sparkling wine**, you can pour it by hand after removing the IntelliCork™ head.

To remove the IntelliCork head, untighten the collar by twisting to the right.



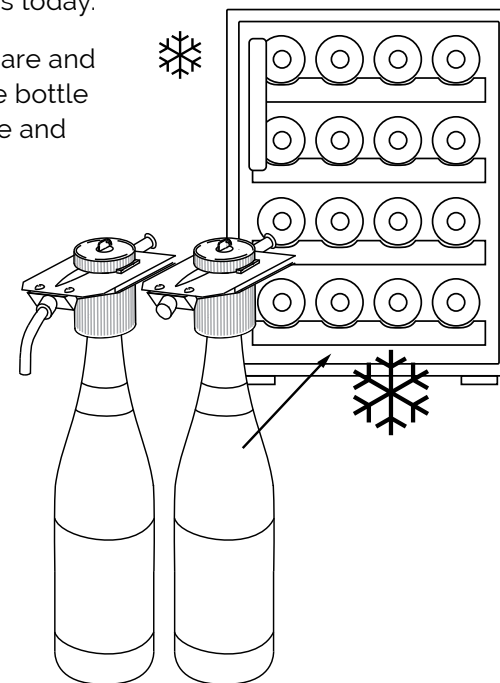
- b. When you're finished, re-insert head and latch and re-pressurize the bottle in your Genesis once again.



PRESERVATION BEYOND THE POUR

- a. Your wine bottle (with the IntelliCork™ head in place) can now be removed from the Genesis system and placed in your cooler or refrigerator for future use. No air will enter the wine bottle, preventing wine oxidation and ensuring that the taste will be the same in several weeks as it is today.
- b. Your sparkling wine bottle will stay preserved for up to **5 days** stored in your fridge or wine cooler.

Note: With proper care and storage of your wine bottle and with proper care and installation of the IntelliCork heads, your wine will stay preserved for several weeks.

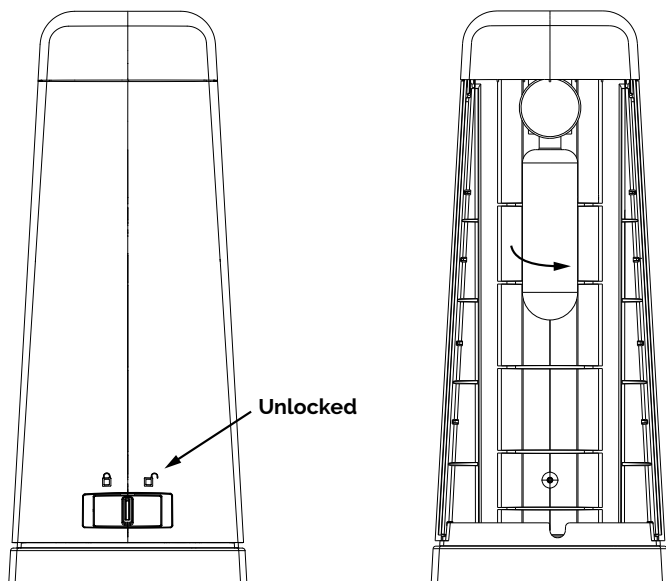


- c. You can now select a different bottle of wine, attach another IntelliCork™ head, and repeat steps 1-3 to preserve and pour from that bottle.

REPLACING YOUR WINEGAS™

Follow these instructions for model GEN-OO

- a. You can easily replace your WineGas capsule by **unlocking** the back, removing the panel and turning the capsule **counter clockwise to detach** it from the mounted regulator.



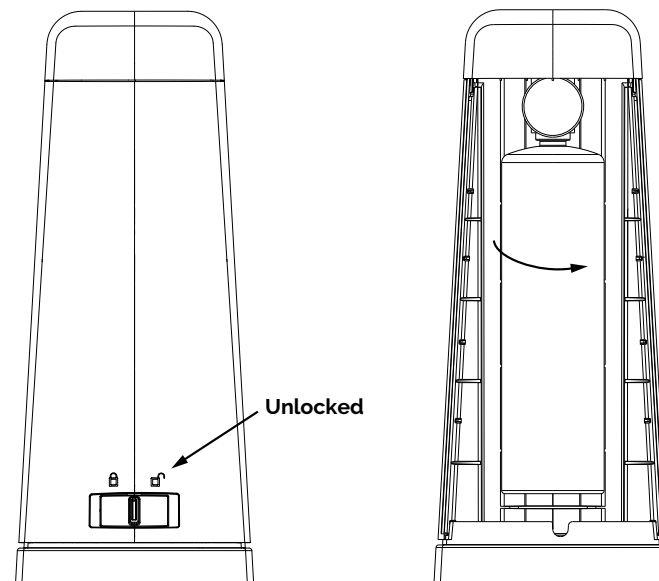
- b. Insert the new **gas capsule** and turn clockwise to tighten onto the regulator and replace the back panel.



Note: The empty tank and capsule can be recycled. The tank and capsule must be empty to dispose. To empty the tank or capsule insert an IntelliCork into the system and turn the handle to pressurize or pour until tank or capsule is empty and the pressure gauge reads zero.

Follow these instructions for model GEN-PRO

- a. You can easily replace your WineGas tank by **unlocking** the back, removing the panel and turning the tank **counter clockwise to detach** it from the mounted regulator.



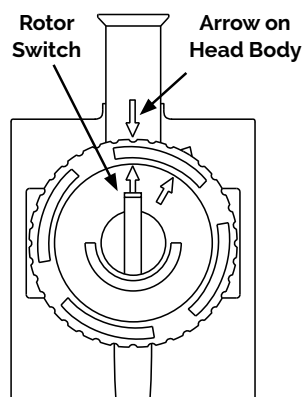
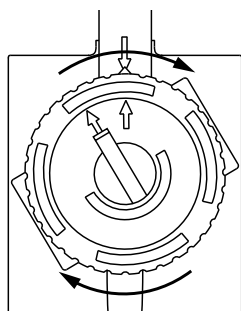
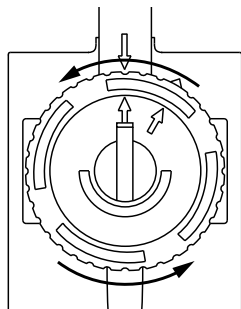
- b. Insert the new **gas tank** and turn clockwise to tighten onto the regulator and replace the back panel.



CLEANING YOUR INTELLICORK™ HEADS

It is recommended that you clean your IntelliCork heads and pick-up tubes before each bottle change.

- Remove the pick up tube** and discard or wash it out in mild solution of warm water and dishwashing soap, then rinse it out.
- Remove the cap** from the head body by turning the cap counter clockwise. The cap will pop off.
- Place both the cap and the head body in a **dishwasher** and set it for a normal wash cycle.
- Re-position the cap** on the head, with the triangular pointer on the side of the cap pointing towards the arrow on the head body as shown.
- Push the cap down and turn it clockwise.
- Line up the rotor switch (at the center of the cap) with the arrow on the head body.
- Attach a pickup tube** to the bottom of the head body.

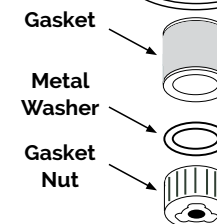
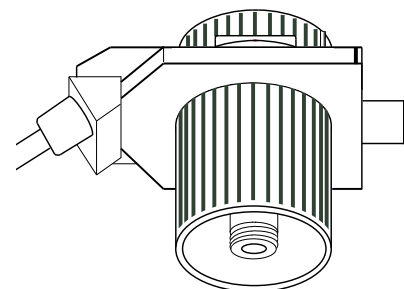
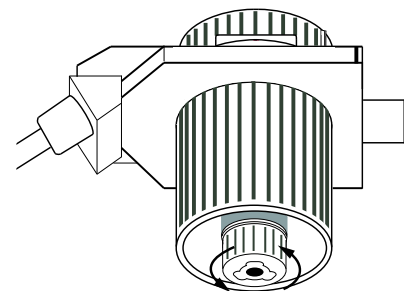


Note: When the head is not in use, keep collar fully un-tightened, to minimize unnecessary pressure on the gasket.

REMOVING & REPLACING YOUR INTELLICORK™ GASKETS

The patented IntelliCork technology was designed to provide ease of use and offer the highest level of preservation. To avoid damage, it is recommended you always use the Bottle Sizing Tool when choosing the proper head for your still wine bottle(s). Over tightening of the IntelliCork head will cause breakage.

- Locate the threaded nut on the bottom of the head assembly. Un-thread the gasket nut by turning it in a counter clockwise direction.
- Remove the gasket nut. Remove gasket from stem.
- Select the gasket color to be used (green, red, white, blue).
- For red and white gaskets ONLY:** After placing the gasket onto the stem, carefully thread the nut back onto the stem by turning clockwise. It should thread easily. **IMPORTANT:** Do not force. Make sure the nut is secure.
- For green gaskets ONLY:** After placing the gasket onto the stem, add the metal washer onto the stem, then carefully thread the nut back onto the stem by turning clockwise. It should thread easily. **IMPORTANT:** Do not force. Make sure the nut is secure.





Designed by Napa Technology • US. Patent 7,712,631

US Sales & Customer Support: 1-800-993-1726

www.GenesisPreserve.com