



To remove the body cowl, locate the two screws on the bottom of your APEX and take them out.



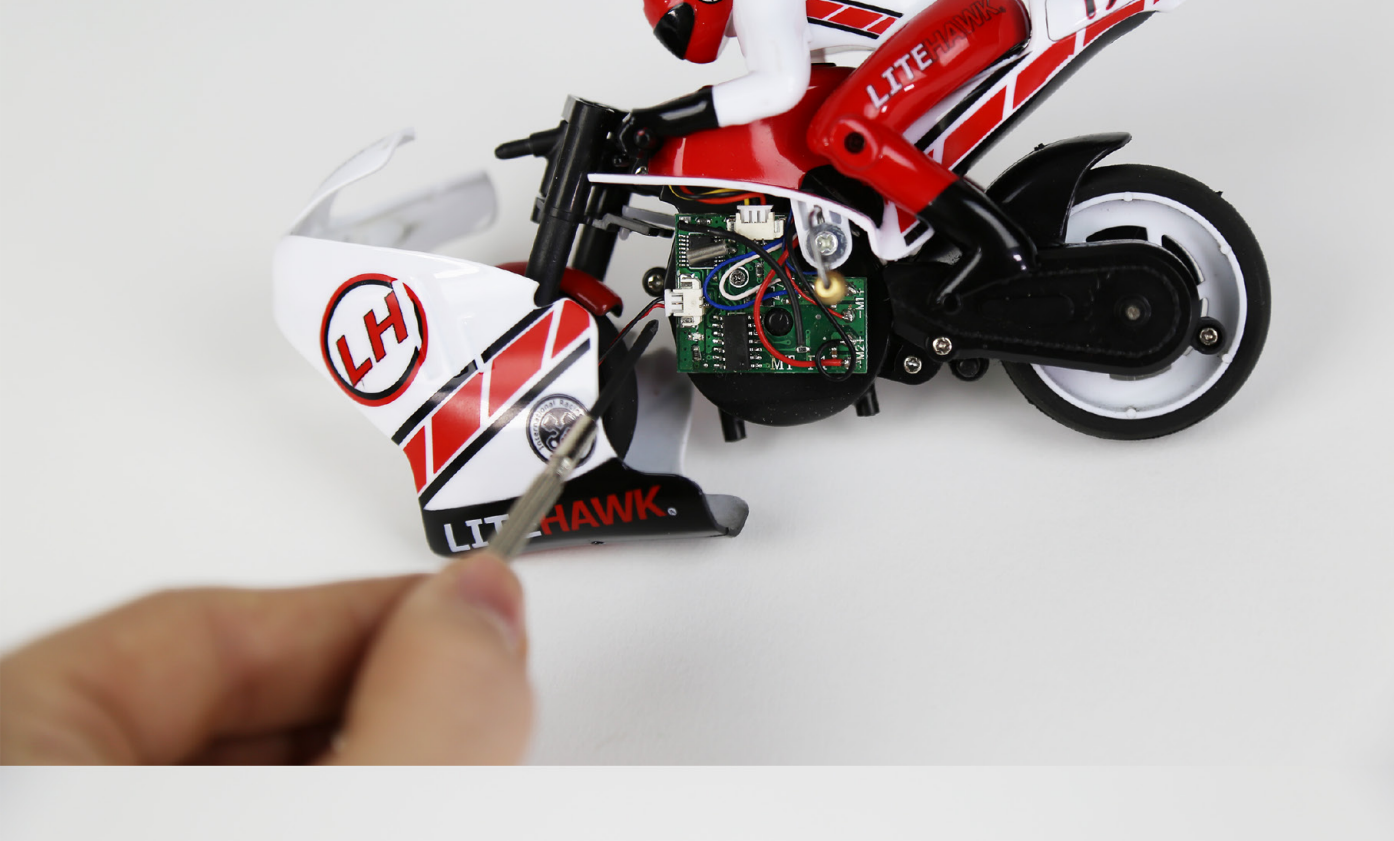
The body cowl will slide forward and off. Be careful not to remove the cowl completely, as the front LED is connected to the frame.



Looking inside the cowl, the cable that connects the front LED to the Mother-board can be seen.



Disconnect the wire from the mother-board (indicated by screwdriver). Pull the connector by the head, not the wires.



The rider is connected to the chassis by two screws, one in each knee.



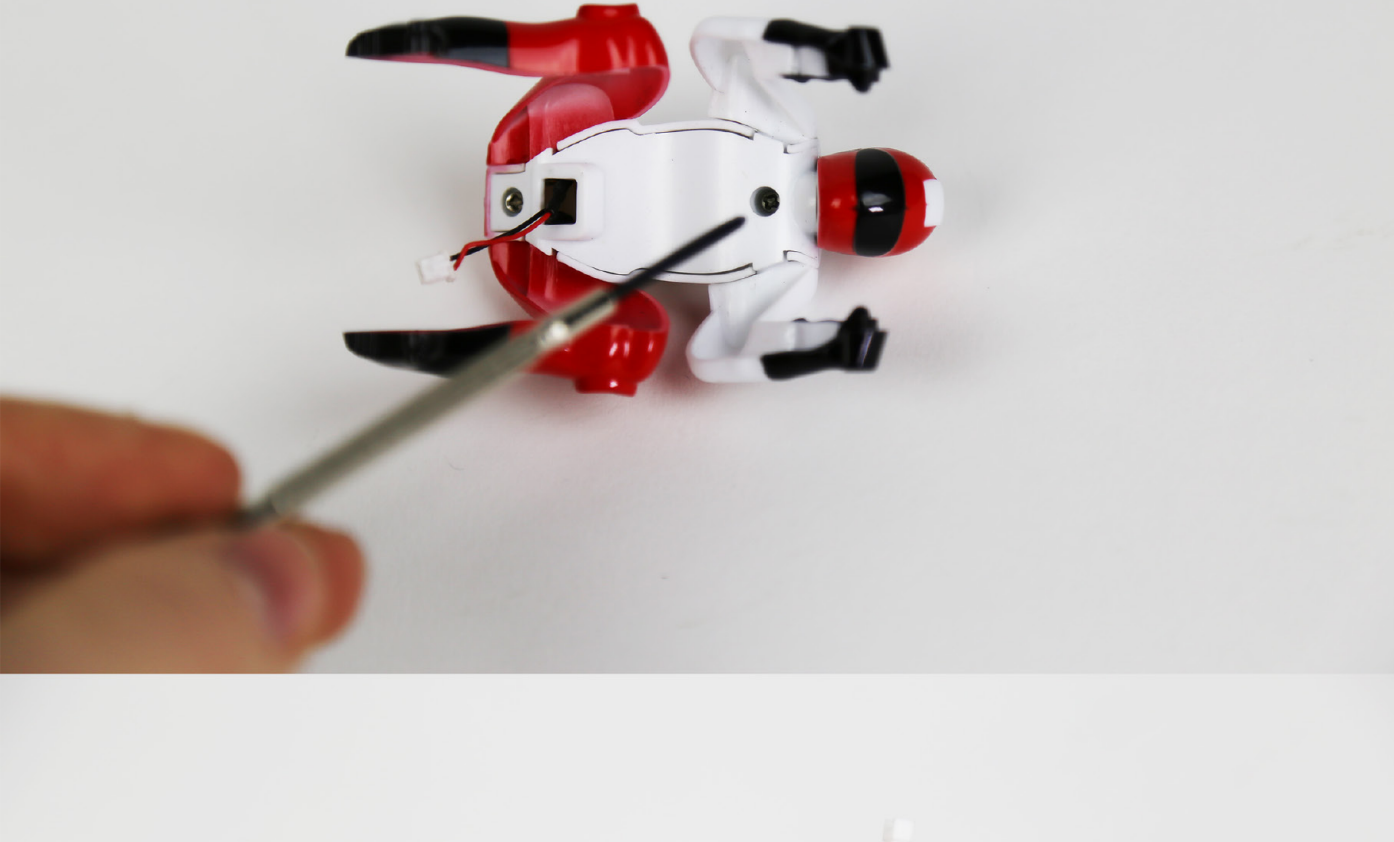
Remove these screws and the rider will lift vertically off the bike.



Inside the rider is the bike battery, which is connected to the bike via a clasp (shown left). Disconnect this clasp and the rider will lift free.



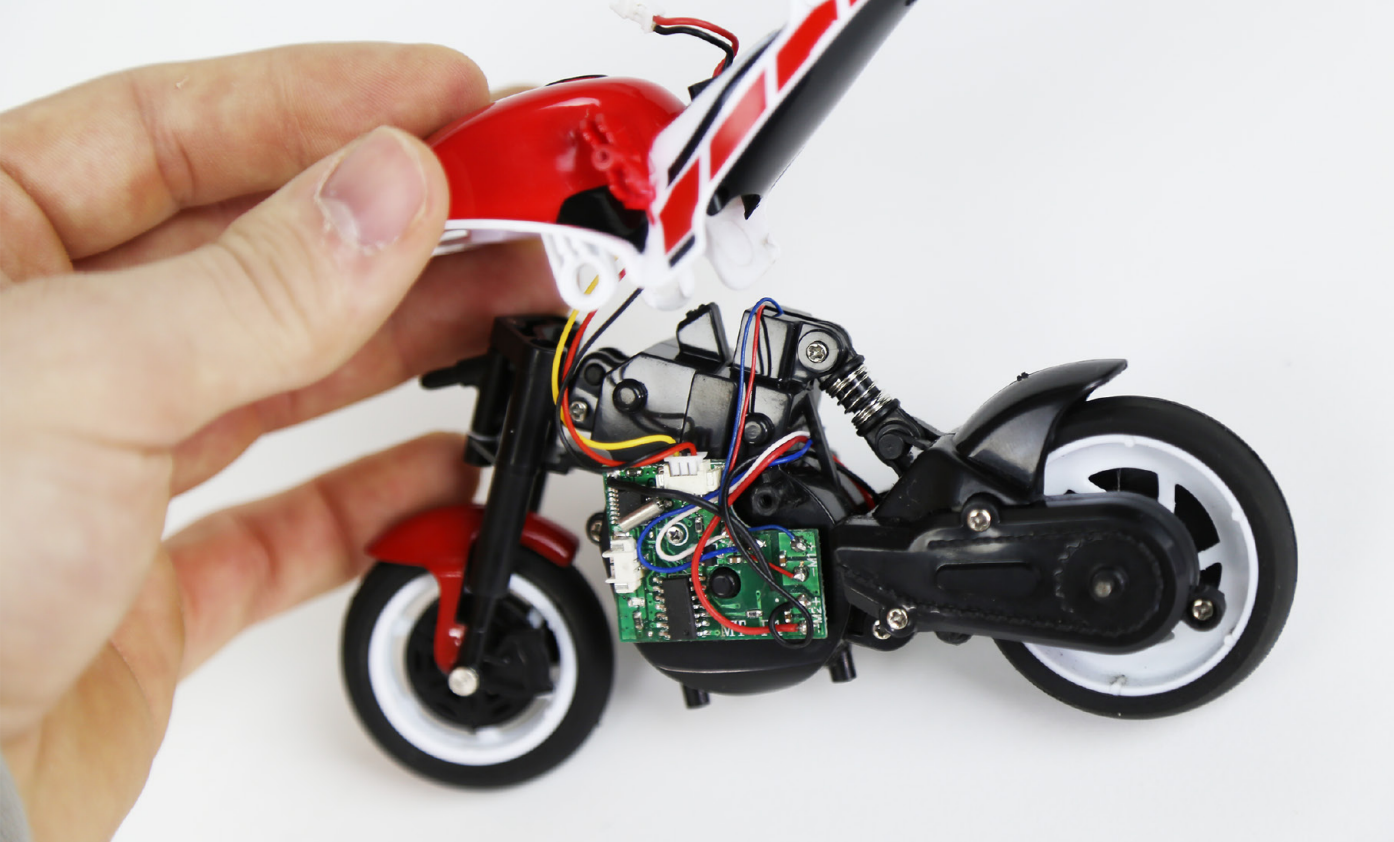
To gain access to the battery, remove the two screws on the belly of the rider. Once done, the indicated plate will come free and reveal the battery.



The seat assembly is attached to the chassis by two screws that also hold the side-arms on. Remove these two screws (indicated) to detach both the side-arms and seat assembly.



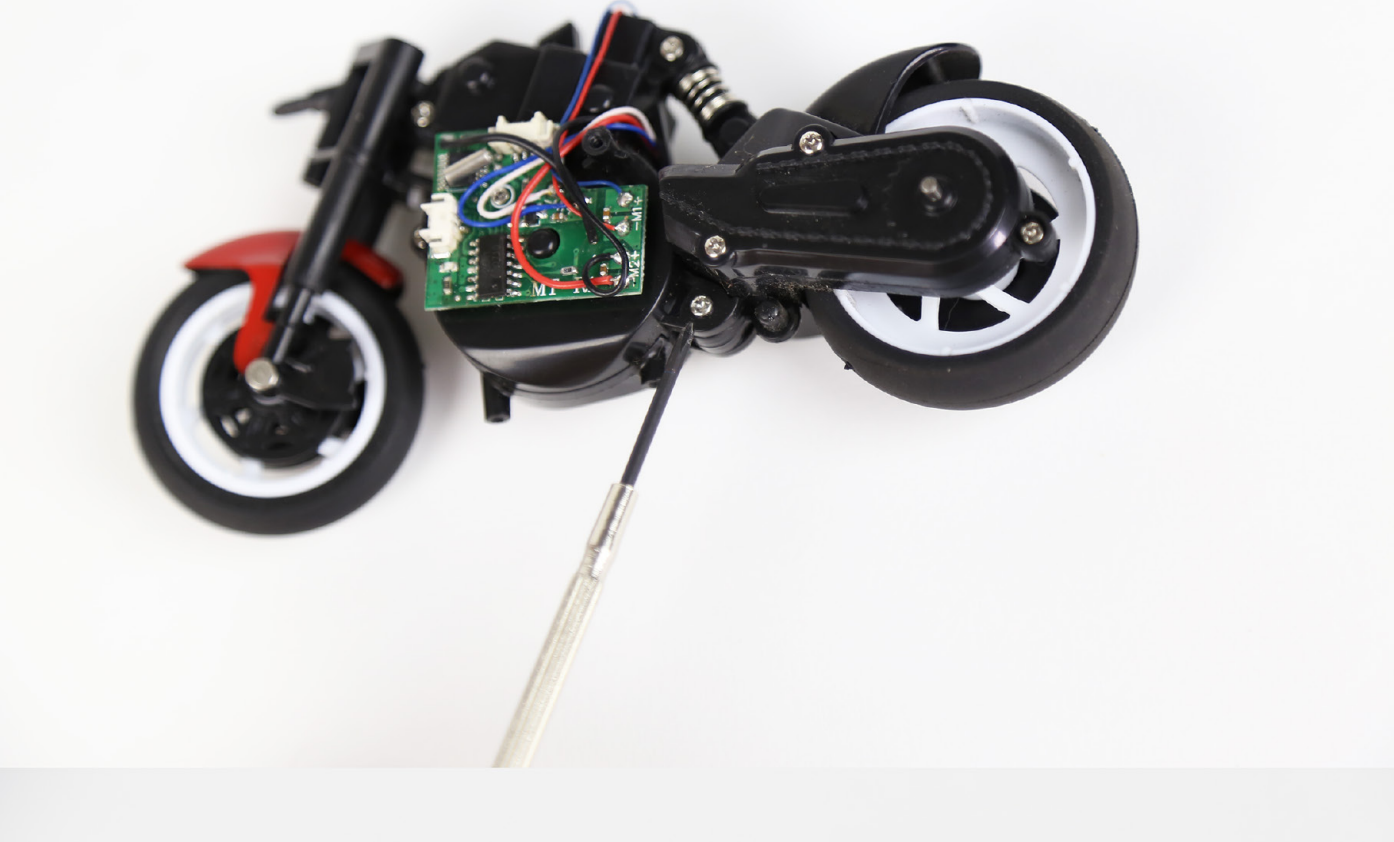
Pull the edges of the seat assembly outwards and lift the seat up and off the bike. Be careful of the wires that are still attached to the mainboard.



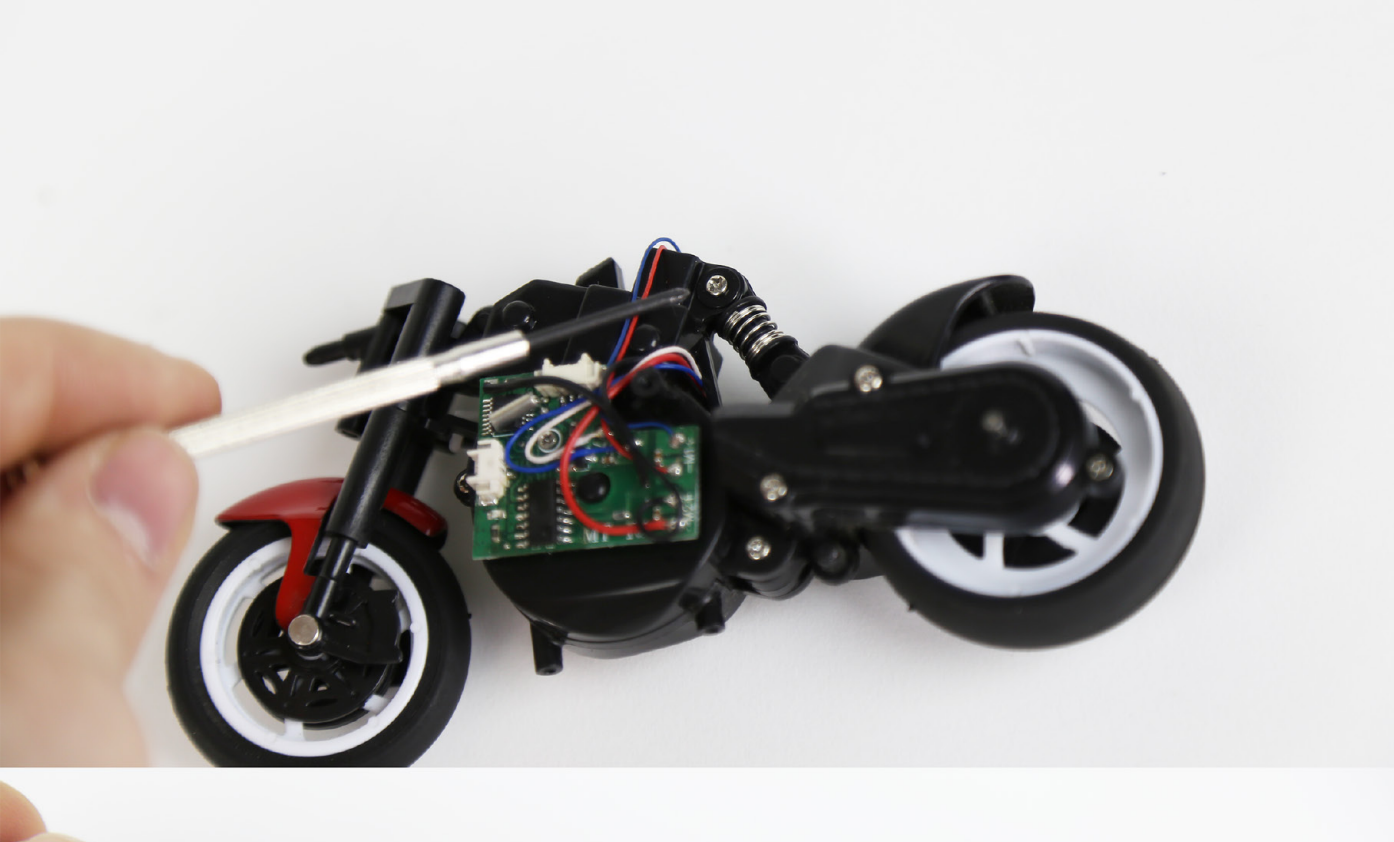
To detach the seat completely, gently pull the indicated connector out.



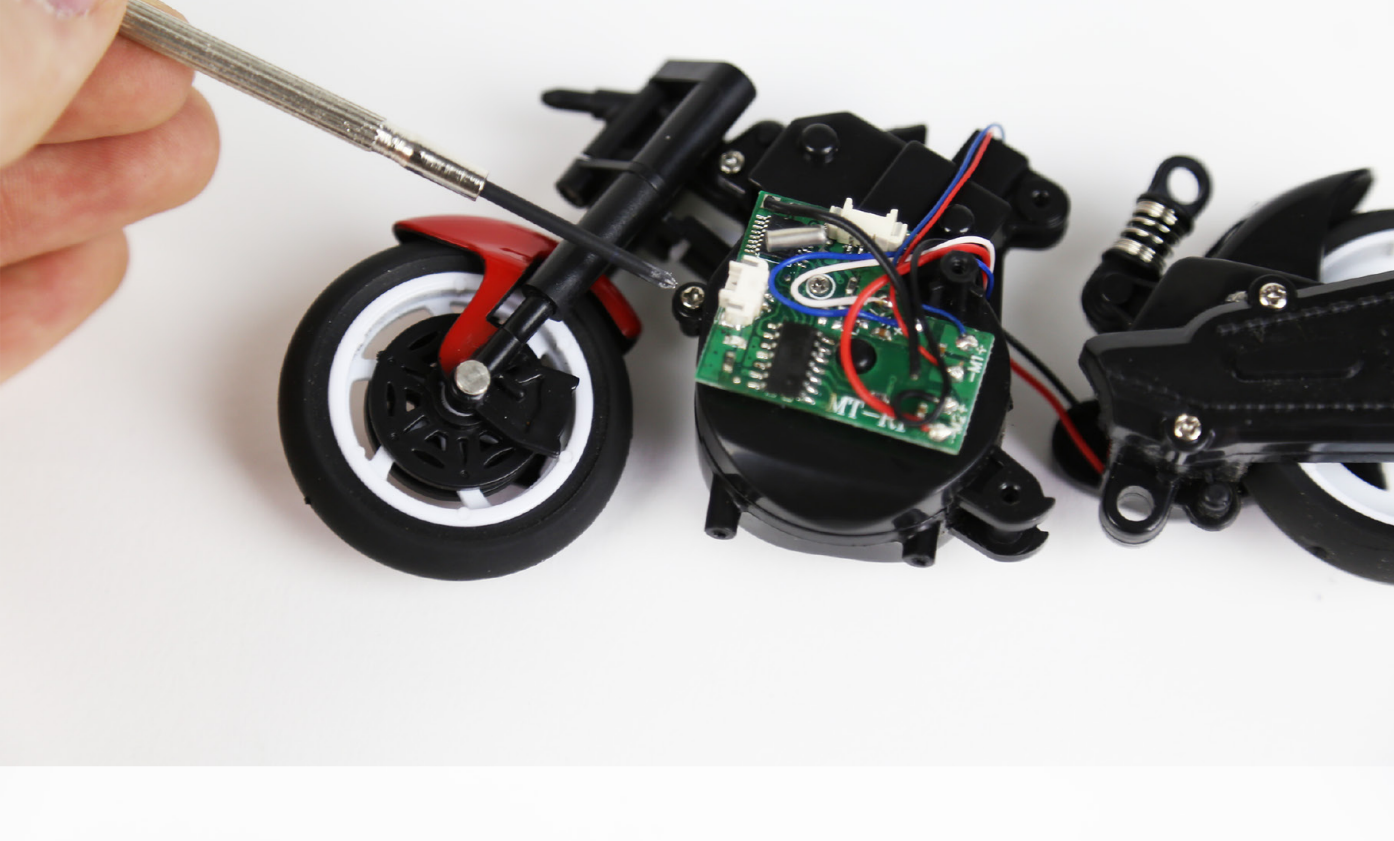
The rear wheel assembly is removed by unscrewing two screws. The first is indicated in the picture to the left.



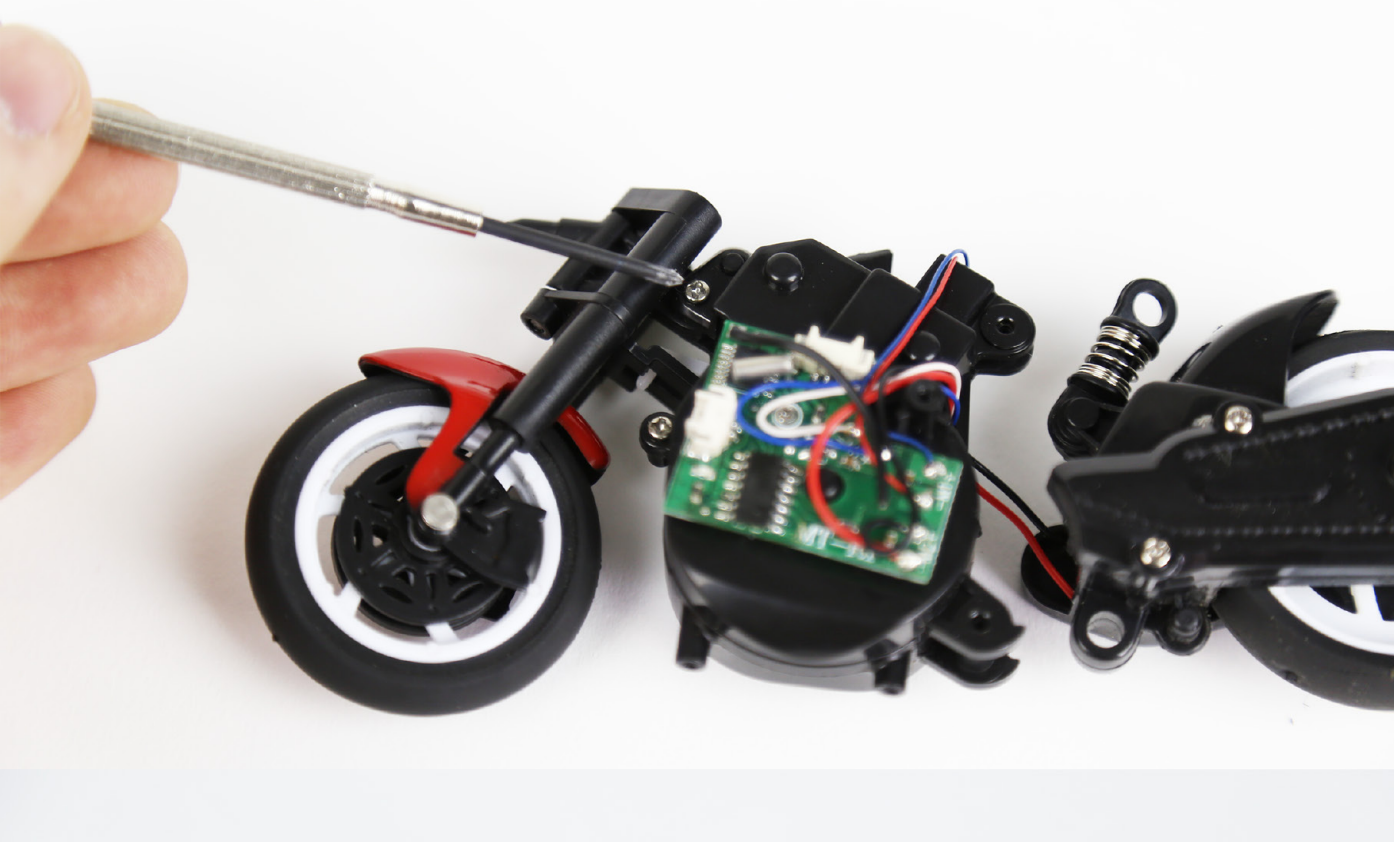
The next screw is indicated to the left. Once these two screws are removed, the rear assembly (drive motor, rear wheel, and gearbox) will come free. To completely remove the whole assembly, the engine wires must be cut and removed from the solder points on the mainboard.



The front wheel assembly can be detached by removing the two screws shown (first one indicated in the picture to the left).



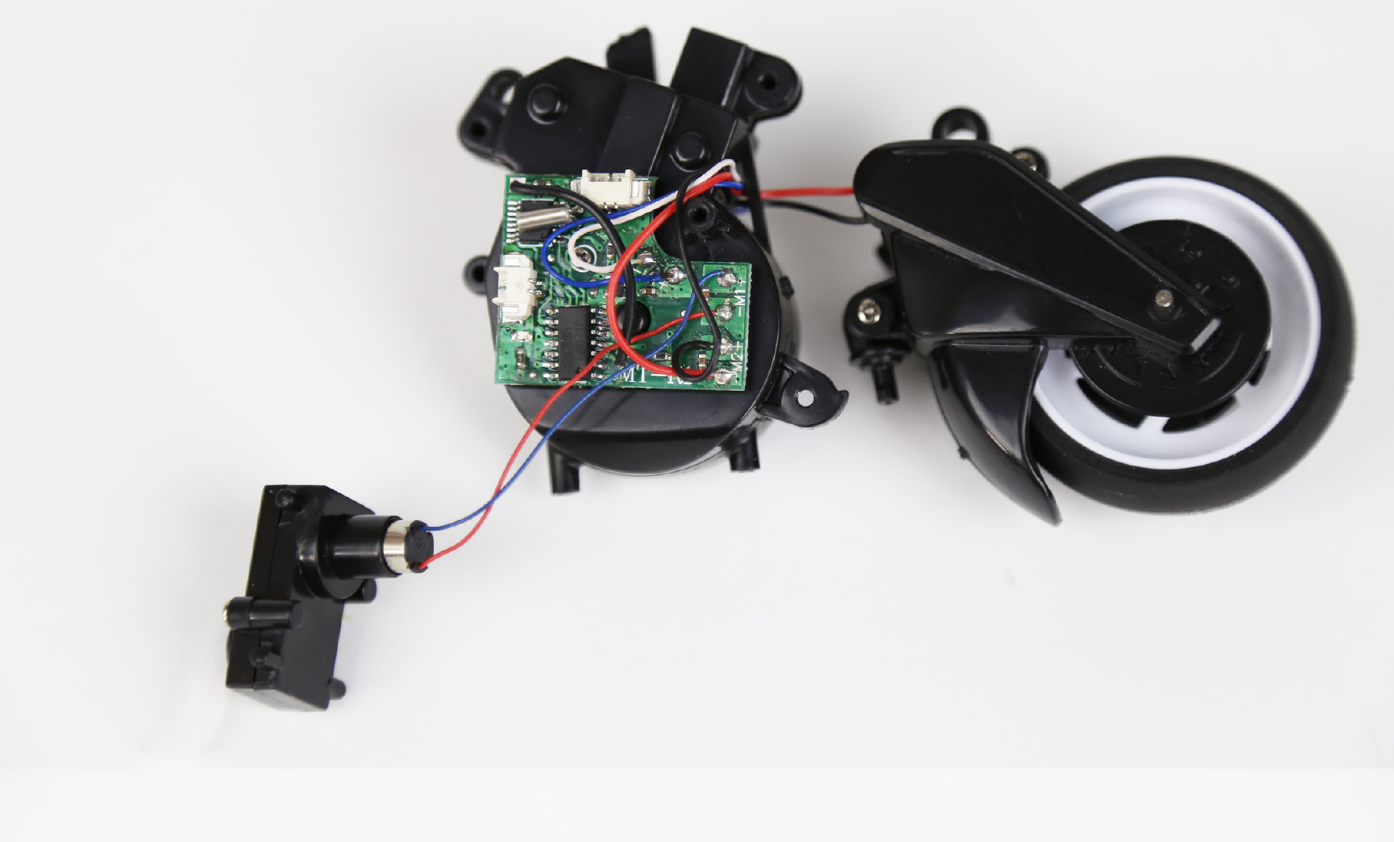
The front wheel assembly can be detached by removing the two screws shown (second one indicated in the picture to the left).



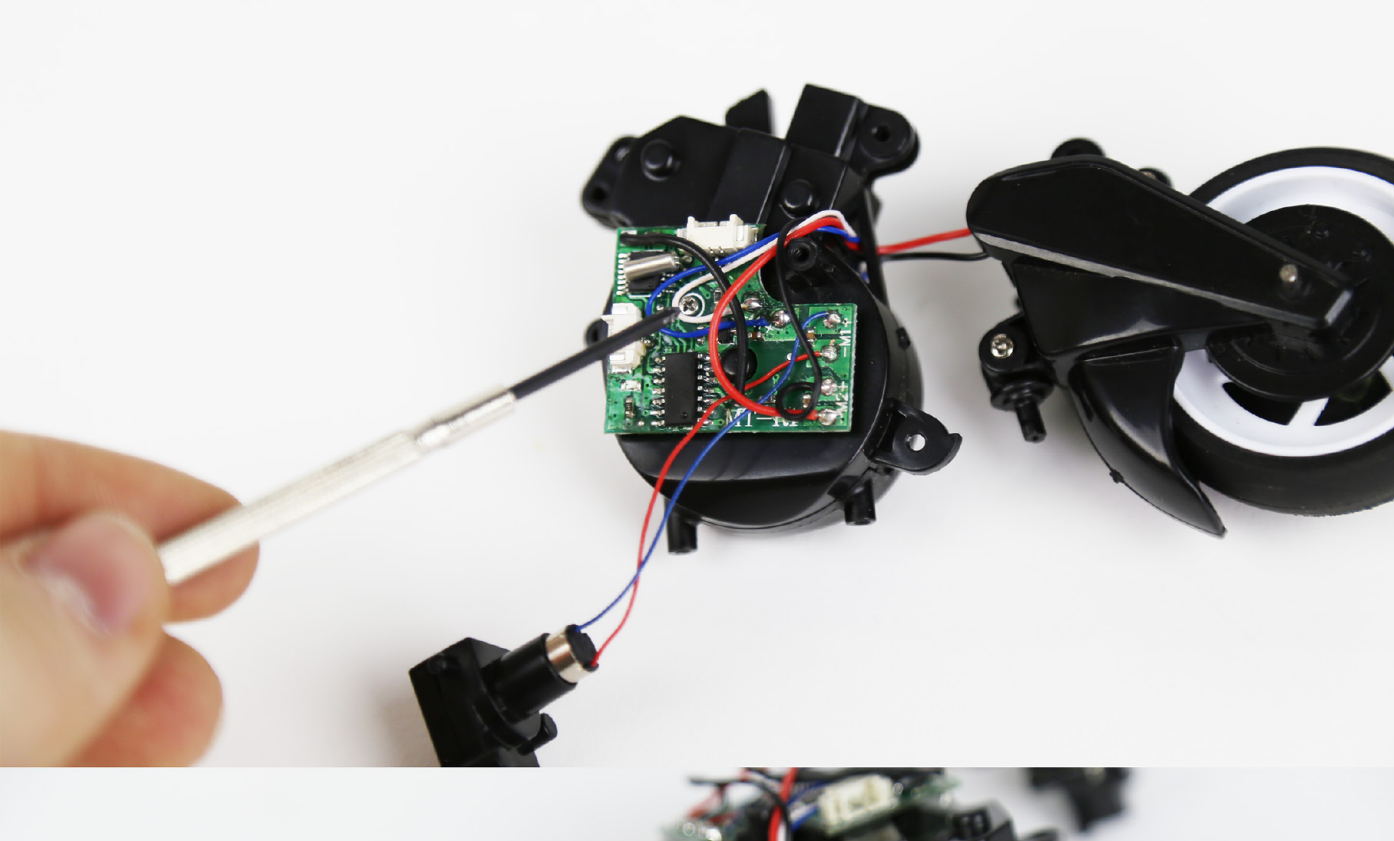
The front wheel lifts up and off of its chassis mounts.



Here is the chassis with the front wheel removed and the servo taken out of the central chassis assembly.



If you want to remove the motherboard, simply unscrew the indicated screw.



A closer look at the rear shock absorber. The upper and lower pieces slide together and are locked together by turning.

