

TWISTEEL

**VD54**  
SEIKO MOVEMENT

# TW STEEL

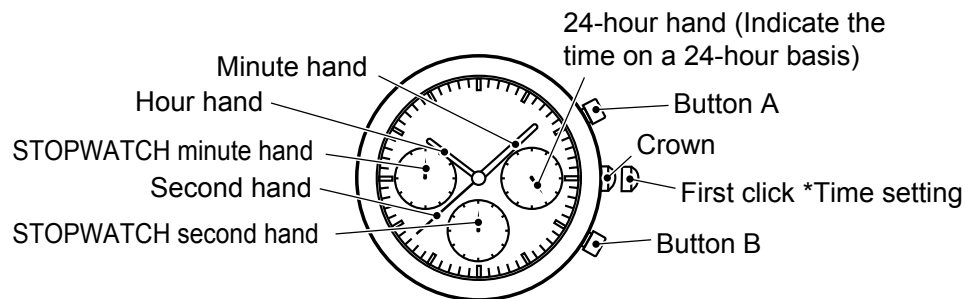
**TW Steel is a watch brand harmoniously combining both design and innovation. 'The Watch in Steel' leads the oversized market with style and quality guaranteed. TW Steel values the most important relationship of all – the one with the consumer. To express this, we hereby give you all the information that you need to enjoy your TW Steel watch to the fullest.**

## **MAINTENANCE**

TW Steel uses the best materials and carries out strict controls before the watch leaves the factory. The way in which you wear or treat your TW Steel will determine whether the appearance of the watch is maintained in the future, or whether it will deteriorate. In order to enjoy wearing your TW Steel as long as possible, we include a number of tips: If the watch comes into contact with hard or corrosive materials, this can cause damage, which, if it occurs regularly, will become clearly visible in the form of scratches.

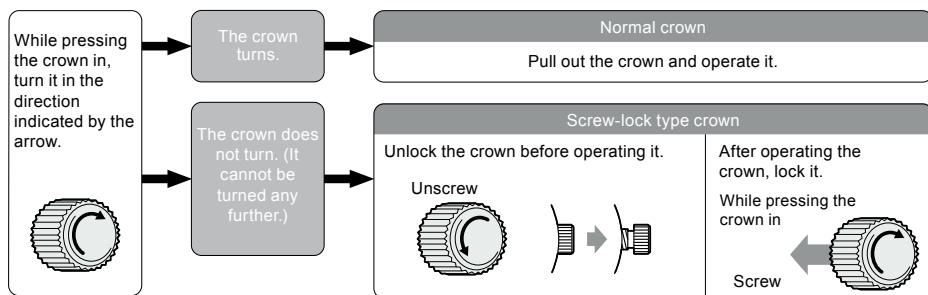
Your watch should be cleaned with a soft cotton cloth that is not impregnated with any cleaning material. Absolutely no cleaning materials should be used. It is advisable to regularly polish your watch with a soft cotton cloth. The watch is a precision mechanical instrument and should be treated as such. Adjusting the time or date, opening or closing the crown or crown cap, should not be done roughly, but carefully.

## DISPLAY AND CROWN / BUTTONS



## CROWN

There are two types of crown, a normal crown and a screw-lock type crown. Please check the type of the crown of your watch.



*\*If your watch has a screw-lock type crown, the crown screws into the watch to prevent malfunction and increase water resistance.*

*\*Be careful not to screw the crown in by force as it may damage the slots of the crown.*

## HOW TO ADJUST THE STOPWATCH HANDS POSITION

If the stopwatch is functioning: A → B

If the stopwatch is stopped: B

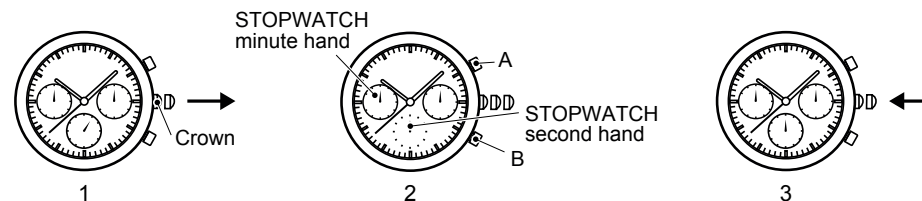
If the split time is displayed: B → A → B

1. Pull out the crown.
2. Press the button A or B to reset the stopwatch second and minute hands to the "0" position. The second hand stops immediately.

*\*By pressing the button A, the STOPWATCH second and minute hands position could be reset. (counter-clockwise direction).*

*\*By pressing the button B, the STOPWATCH second and minute hands position could be reset. (clockwise direction).*

3. Push the crown back to the normal position.



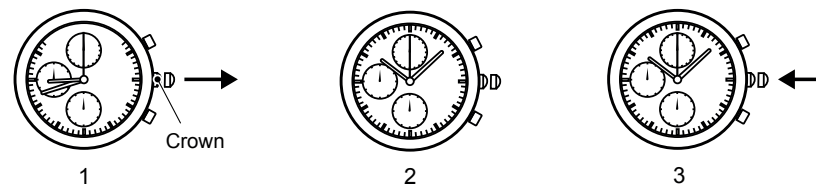
## HOW TO SET THE DATE AND TIME

*\*Before setting the time, make sure to check that the stopwatch measurement is stopped.*

1. Pull out the crown when the second hand is at the 12 o'clock position. The second hand will stop immediately.

*\*Do not press any button, as this will move the stopwatch hands.*

2. Turn the crown to set the minute hand to the desired time.
3. Push the crown back to the normal position in accordance with a time signal.



**CAUTION :** IF THE CROWN IS NOT PRESSED IN PROPERLY, THE WATCH IS NO LONGER WATERPROOF AND THE MOVEMENT CAN BE SERIOUSLY DAMAGED!