

TW
STEEL
S

8040.B
RONDA MOVEMENT

TW STEEL

TW Steel is a watch brand harmoniously combining both design and innovation. 'The Watch in Steel' leads the oversized market with style and quality guaranteed. TW Steel values the most important relationship of all – the one with the consumer. To express this, we hereby give you all the information that you need to enjoy your TW Steel watch to the fullest.

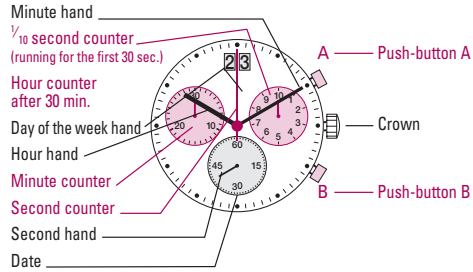
MAINTENANCE

TW Steel uses the best materials and carries out strict controls before the watch leaves the factory. The way in which you wear or treat your TW Steel will determine whether the appearance of the watch is maintained in the future, or whether it will deteriorate. In order to enjoy wearing your TW Steel as long as possible, we include a number of tips: If the watch comes into contact with hard or corrosive materials, this can cause damage, which, if it occurs regularly, will become clearly visible in the form of scratches.

Your watch should be cleaned with a soft cotton cloth that is not impregnated with any cleaning material. Absolutely no cleaning materials should be used. It is advisable to regularly polish your watch with a soft cotton cloth. The watch is a precision mechanical instrument and should be treated as such. Adjusting the time or date, opening or closing the crown or crown cap, should not be done roughly, but carefully.

Description of the display and control buttons

Display elements



01

Chronograph: Basic function

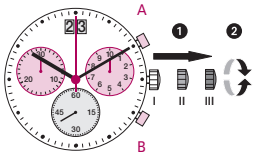
(Start / Stop / Reset)

Example:

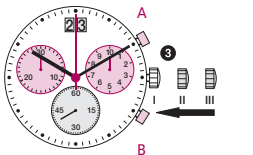
- Start:** Press push-button A.
- Stop:** To stop the timing, press push-button A once more and read the chronograph counters:
4 min / 38 sec / 7/10 sec
- Zero positioning:** Press push-button B. (The chronograph hands will be reset to their zero positions.)

04

Setting the time



- * Pull out the crown to position III (the watch stops).
- Turn the crown until you reach the correct time 8:45.



- * Push the crown back into position I.

Please note:

* In order to set the time to the exact second, ① must be pulled out when the second hand is in position «60». Once the hour and minute hands have been set, ② must be pushed back into position I at the exact second.

02

Chronograph: Accumulated timing

Example:

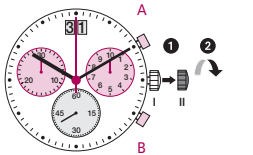
- Start:** (start timing)
- Stop:** (e.g. 15 min 5 sec following ①)
- Restart:** (timing is resumed)
- * **Stop:** (e.g. 5 min 12 sec following ③)
= 20 min 17 sec
 (The accumulated measured time is shown)
- Reset:** The chronograph hands are returned to their zero positions.

Please note:

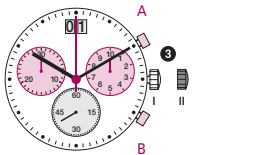
* Following ④, the accumulation of the timing can be continued by pressing push-button A (Restart / Stop, Restart / Stop, ...).

05

Setting the date (quick mode)



- Pull out the crown to position II (the watch continues to run).
- Turn the crown anticlockwise until the correct date [01] appears.
- Push the crown back into position I.



Please note:

During the date changing phase between approx. 8 PM and 12 PM; the date must be set to the date of the following day.

An extreme acceleration in setting the date with quick mode can induce a false date indication. The synchronization is re-established by setting the date from 01 till 31 (crown in position II).

03

Chronograph: Intermediate or interval timing

Example:

- Start:** (start timing)
- Display interval:**
 e.g. 20 minutes 17 seconds (timing continues in the background)
- * **Making up the measured time:** (the chronograph hands are quickly advanced to the ongoing measured time.)
- Stop:** (Final time is displayed)
- Reset:** The chronograph hands are returned to their zero position.

Please note:

* Following ③, further intervals or intermediates can be displayed by pressing push-button B (display interval / make up measured time, ...).

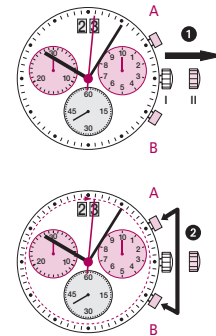
06

Adjusting the chronograph hands to zero position

Example:

One or several chronograph hands are not in their correct zero positions and have to be adjusted (e.g. following a battery change).

- Pull out the crown to position III (all chronograph hands are in their correct or incorrect zero position.)
- Keep push-buttons A and B depressed simultaneously for at least 2 seconds (the second counter hand rotates by 360° → corrective mode is activated.)



Adjusting the second counter hand

Single step A 1 x short
 Continuous A long

Adjusting the next hand B

Adjusting the $\frac{1}{10}$ second counter hand (position 3h)

Single step A 1 x short
 Continuous A long

Adjusting the next hand B

Adjusting the minute counter hand (position 9h)

Single step A 1 x short
 Continuous A long

- Returning the crown to position I

Termination of the chronograph hands adjustment (can be carried out at any time).

07

CAUTION : IF THE CROWN IS NOT PRESSED IN PROPERLY, THE WATCH IS NO LONGER WATERPROOF AND THE MOVEMENT CAN BE SERIOUSLY DAMAGED!