

**UNITED**  
STRANGERS | Product offering



“STRANGERS FROM ALL OVER THE WORLD UNITE TO CREATE AN ECLECTIC RANGE OF FURNITURE AND ACCESSORIES. OUR DESIGNS ARE A BLEND OF OLD AND NEW, WE SOURCE CONTROL AND DEVELOP EACH AND EVERY MATERIAL WE WORK WITH. EACH PIECE IS THEN HAND FINISHED BY OUR OWN TEAM OF SKILLED CRAFTSMAN, LEATHER WORKERS AND ARTISANS.”

BEWARE OF STRANGERS.... UNITE

**UNITED**  
STRANGERS



**FABRIC**



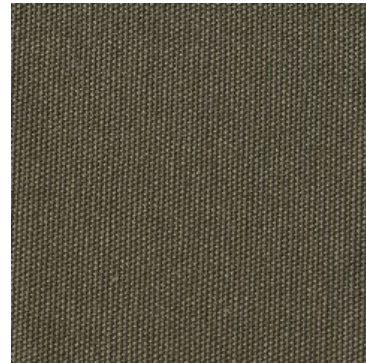
# FABRIC



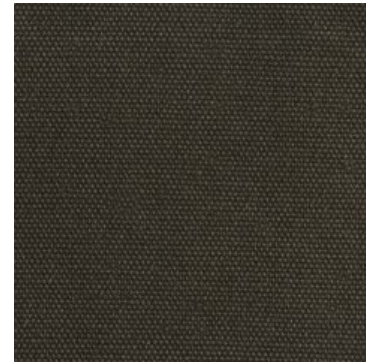
Oregonnor Dark Green  
100% Cotton  
F1703



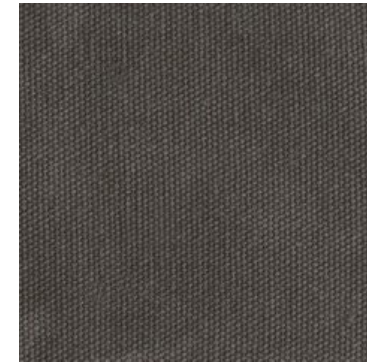
Oregonnor Green  
100% Cotton  
F1601



Reserve Medium Green  
100% Cotton  
AF1602



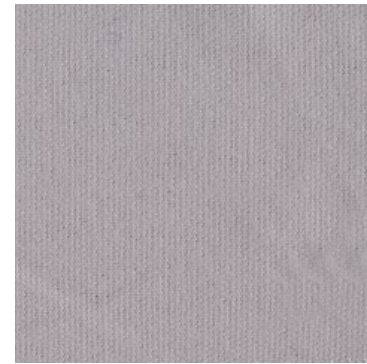
Reserve Light Green  
100% Cotton  
AF1603



New Army Canvas Medium Green  
100% Cotton  
AF1604



Sahara Tan Fabric  
100% Cotton  
F1710



Alaskan Ivory  
100% Cotton  
F1613



Thick Dirty Canvas  
100% Cotton  
F1707



Arizona Yellow  
100% Cotton  
F1611



Royal Navy Blue  
100% Cotton  
F1801



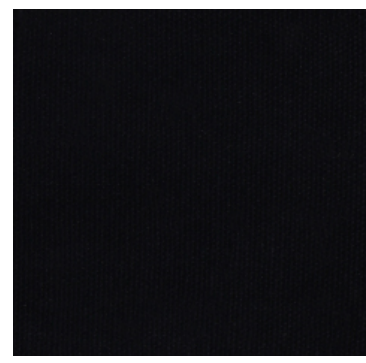
California Medium Blue  
100% Cotton  
F1603



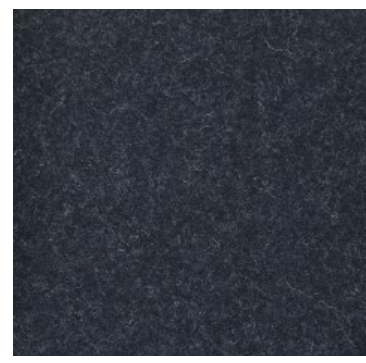
California Light Blue  
100% Cotton  
F1606



Wellington Grey  
100% Cotton  
F1701



Midnight Black  
100% Cotton  
F1704



Charcoal Wool  
CW



Dark Blue Wool  
DBW



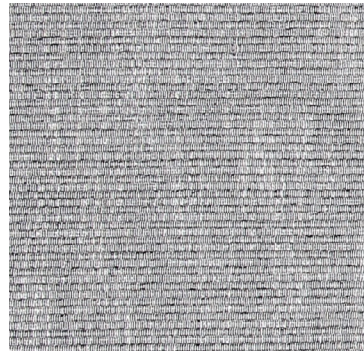
Dark Blue Corduroy  
DBC



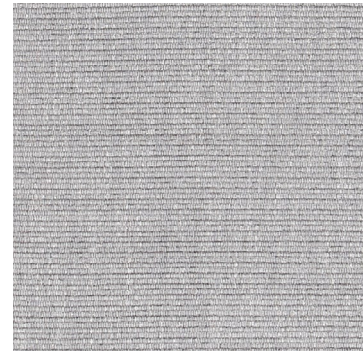
Tan Corduroy  
TC



# FABRIC



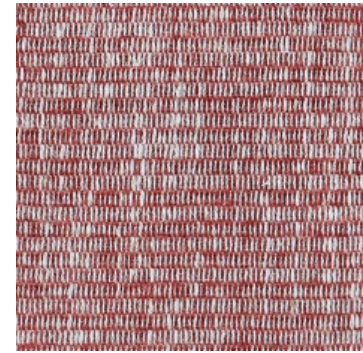
Osaka Black  
55%P 30%V 10%L 5%C  
F1705



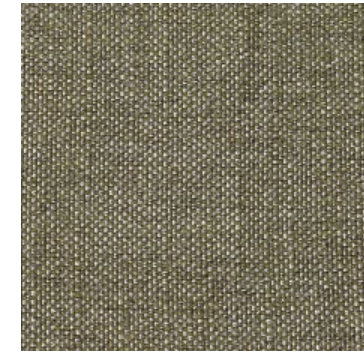
Osaka Grey  
55%p 30%v 10%L 5%c  
F1802



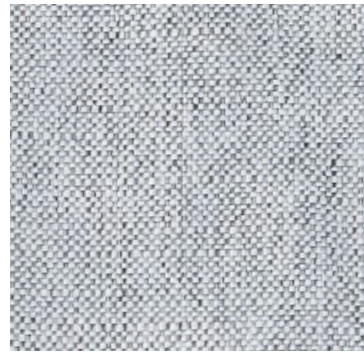
Osaka White  
55%P 30%V 10%L 5%C  
F1706



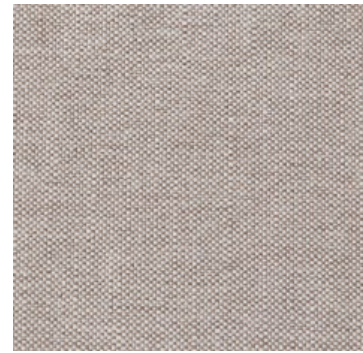
Osaka Red  
55%P 30%V 10%L 5%C  
F1709



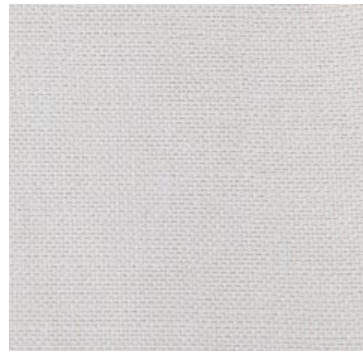
Boske Smooth Green Fabric  
100% Poly  
F1708S



Santa Monica Smooth Grey  
100%P  
F1805S



Santa Monica Smooth Light Brown  
100%P  
F1804S



Santa Monica Smooth White  
100%P  
F1803S



Santa Monica Smooth Dark Brown  
100%P  
F1806S



Santa Monica Smooth Black  
100%P  
F1807S



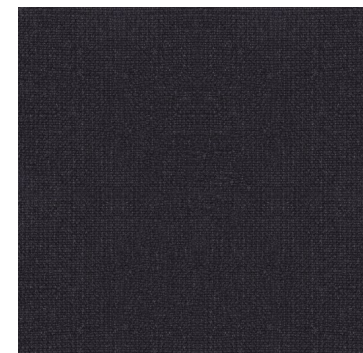
Jedi Camel Wool Fabric  
70%Acrylic+30%Wool  
F1903



Jedi Black Wool Fabric  
70%Acrylic+30%Wool  
F1904



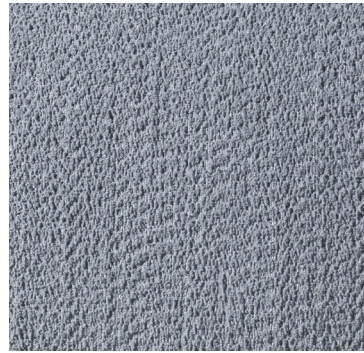
Jedi Navy Blue Wool Fabric  
70%Acrylic+30%Wool  
F1905



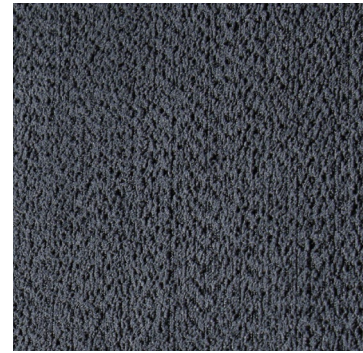
Jedi Grey Wool Fabric  
70%Acrylic+30 %Wool  
F1906



# FABRIC



Plantation Light Blue Fabric  
100% P  
F2005



Plantation Dark Green Fabric  
100% P  
F2006



Fitzroy Boucle Ivory Fabric  
93% Polyester + 7% Acrylic  
F2101



Fitzroy Boucle Light Grey Fabric  
93% Polyester + 7% Acrylic  
F2102



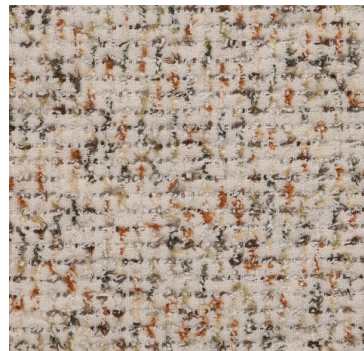
Fitzroy Boucle Orange Fabric  
93% Polyester + 7% Acrylic  
F2103



Fitzroy Boucle Green Fabric  
93% Polyester + 7% Acrylic  
F2105



Fitzroy Boucle Dark Grey Fabric  
93% Polyester + 7% Acrylic  
F2106



Fulham Green Orange Fabric  
100% Polyester  
F2201



Fulham White Fabric  
100% Polyester  
F2202



Parsons Red Fabric  
95% Polyester + 5% Cotton  
F2203



Parsons Green Fabric  
95% Polyester + 5% Cotton  
F2204



Devon Green Fabric  
100% Polyester  
F2210



Manchester Light Brown Fabric  
90% Polyester + 10% Cotton  
F2209



# FABRIC



Sussex Light Grey Fabric  
100% Polyester  
F2205



Sussex Dark Blue Fabric  
100% Polyester  
F2206



Sussex Green Fabric  
100% Polyester  
F2207



Sussex White Fabric  
100% Polyester  
F2211



Sussex Dirty White Fabric  
100% Polyester  
F2212



Kent Grey Fabric  
100% Polyester  
F2208



**LEATHER**



# LEATHER



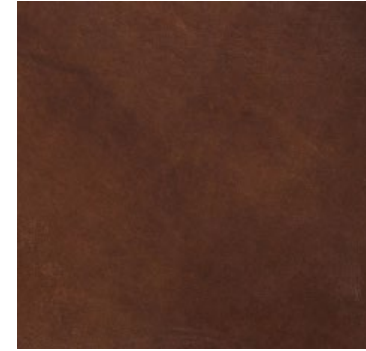
Texan Light Brown  
100% Annaline Leather  
L1603



Texan Medium Brown  
100% Annaline Leather  
L1605



Alaskan Ivory  
100% Annaline Leather  
L1611



Diesel Dark Brown  
100% Annaline Leather  
L1612



Easy Rider Black  
100% Annaline Leather  
L1613



Seattle Dark Green  
100% Annaline Leather  
L1702



Sahara Tan Leather  
100% Annaline Leather  
L1703



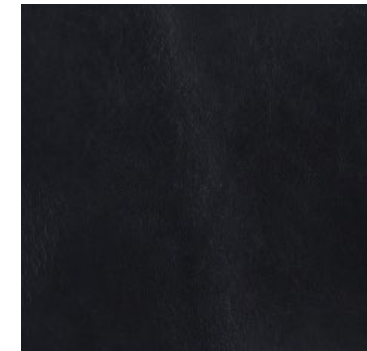
Mars Brown Leather  
100% Annaline Leather  
L1704



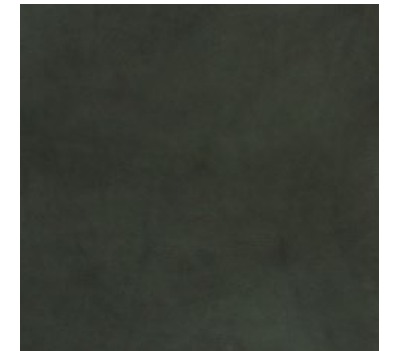
Wild Bill Light Brown  
100% Annaline Leather  
L1706



Chestnut Brown Vege Tan Leather  
100% Annaline Leather  
VL1701



Black Of Spades Vege Tan Leather  
100% Annaline Leather  
VL1702

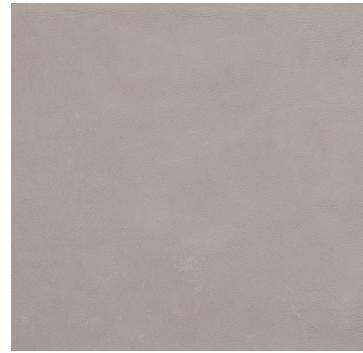


Green Vege Tan Leather  
100% Annaline Leather  
VL1801

# LEATHER



Nubuck Camel Leather  
100% Annaline Leather  
L1902



Nubuck Light Grey Leather  
100% Annaline Leather  
L1901



Nubuck Tan Leather  
100% Annaline Leather  
L1905



Boston Rough Natural Leather  
100% Annaline Leather  
L1906



Boston Rough Grey Leather  
100% Annaline Leather  
L1907



Clean Camel Leather  
100% Annaline Leather  
L1910



Clean Chocolate Brown Leather  
100% Annaline Leather  
L1912



Midnight Black Leather  
100% Annaline Leather  
L1807



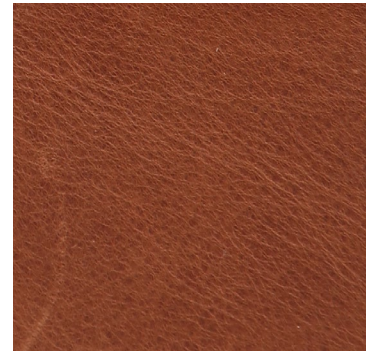
Wild Bill Black Leather  
full aniline  
L2202



# LEATHER



Butter Cocoa Brown  
Full Aniline  
L2001



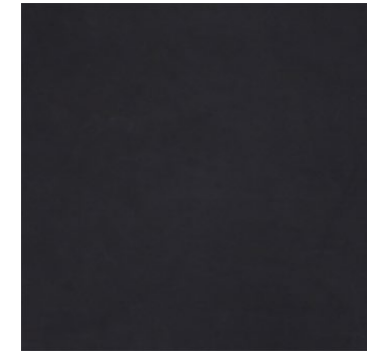
Butter Dark Coffee  
Full Aniline  
L2002



Nubuck Latte  
Full Aniline  
L2003



Nubuck Chocolate  
Full Aniline  
L2004



Nubuck Charcoal  
Full Aniline  
L2005



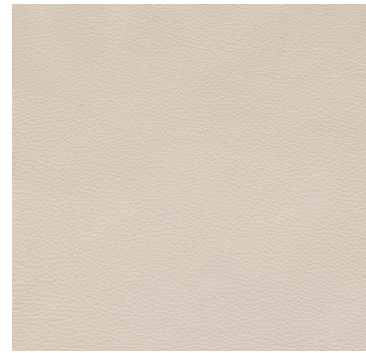
Soft Vintage Sandstone  
Semi Aniline  
L2006



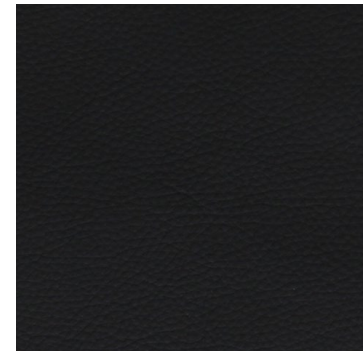
Soft Vintage Auburn  
Semi Aniline  
L2007



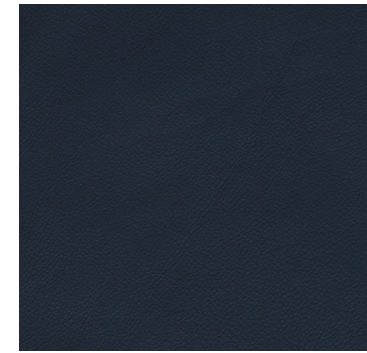
Modern Hazelnut  
Semi Aniline  
L2008



Modern Ivory Leather  
Semi Aniline  
L2009



Modern Black Leather  
Semi Aniline  
L2010



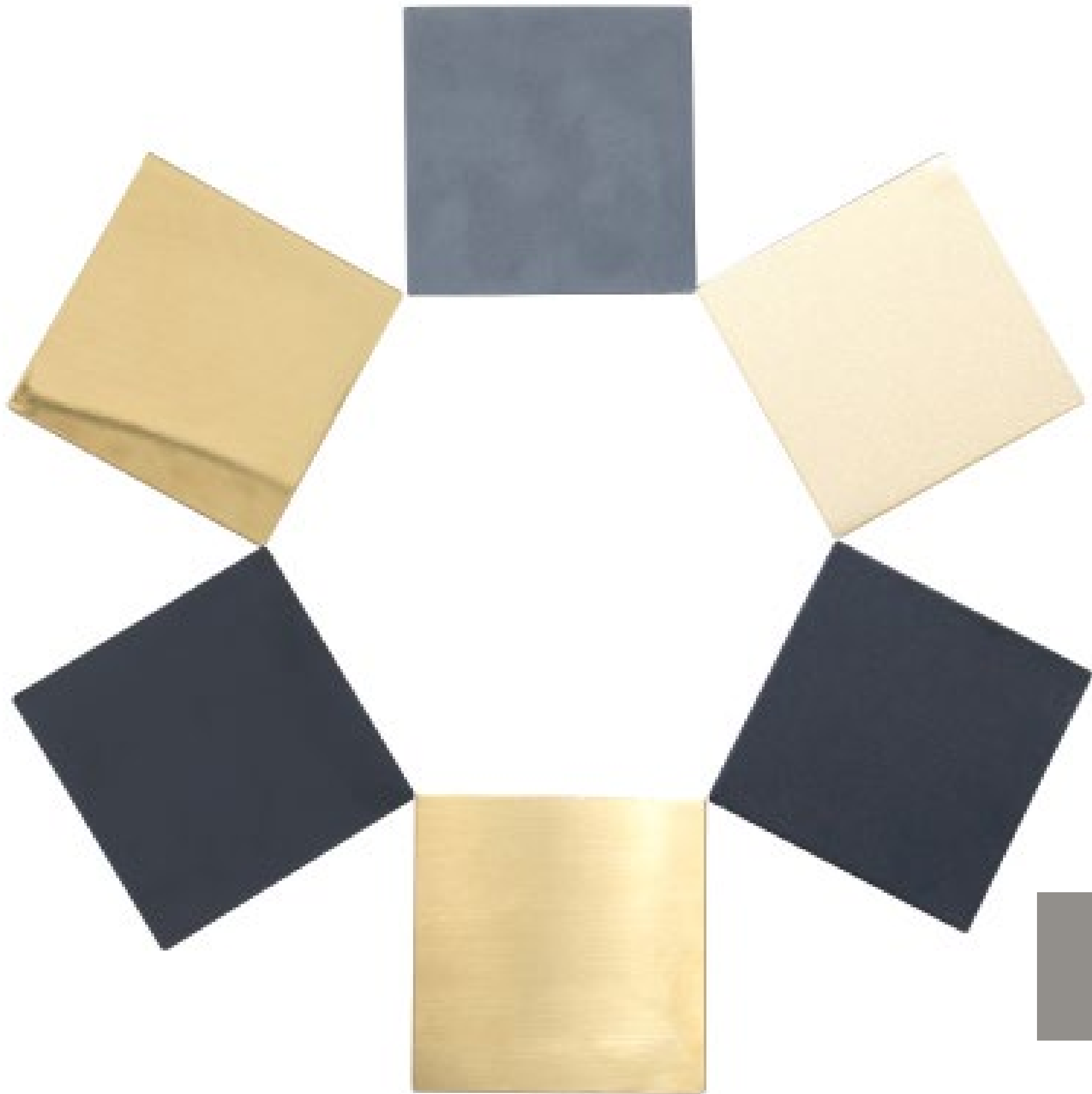
Modern Dark Blue Leather  
Semi Aniline  
L2011



Toast Dark Brown Leather  
Semi Aniline  
L1914



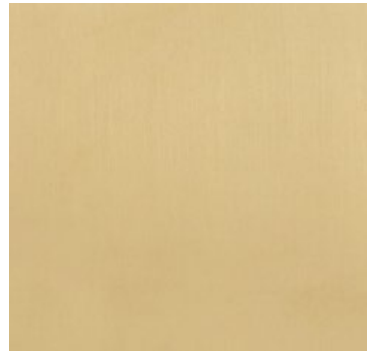
Toast Light Brown Leather  
Semi Aniline  
L1915



**METAL**



# METAL



Brass Plated Brushed  
BPB



Brass Plated Polished  
BPP



Golden Brass  
GB



Bronx Brass  
BB



Soldier Brass  
SB



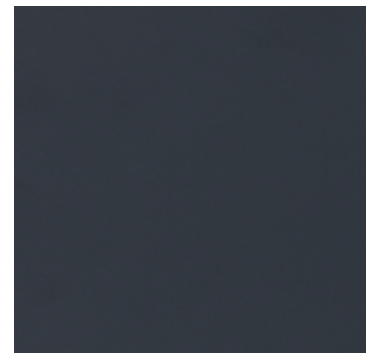
King Pin Brass  
KP



Distressed Black  
DB/BL



Raw Deal  
RD



Smooth Jet Black  
SJB



LU-DA  
LD



B-52 ALUMIUM  
B52



POLISHED STAINLESS STEEL  
PSS

**UNITED**  
STRANGERS

UNITED STRANGERS PRODUCT OFFERING



**WOOD**





# WOOD



Ash Chocolate Dark Brown  
Ash Wood  
ACDB



Ashwood Natural  
Ash Wood  
AWN



Ashwood Black  
Ash Wood  
AWB/BLK



Bleached Ash  
Ash Wood  
BA



Ash Chalk White  
Ash Wood  
ACW



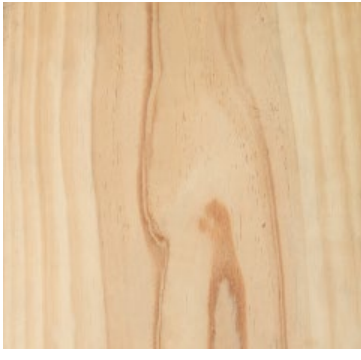
Ash Dark Brown Walnut  
Ash Wood  
ADBW



Smoky Brown  
Ash Wood  
SMB



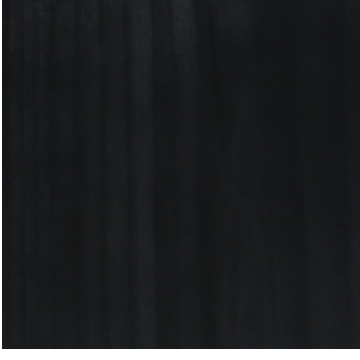
Woodland Brown  
Ash Wood  
WLB



Natural  
Pine Wood  
PWN



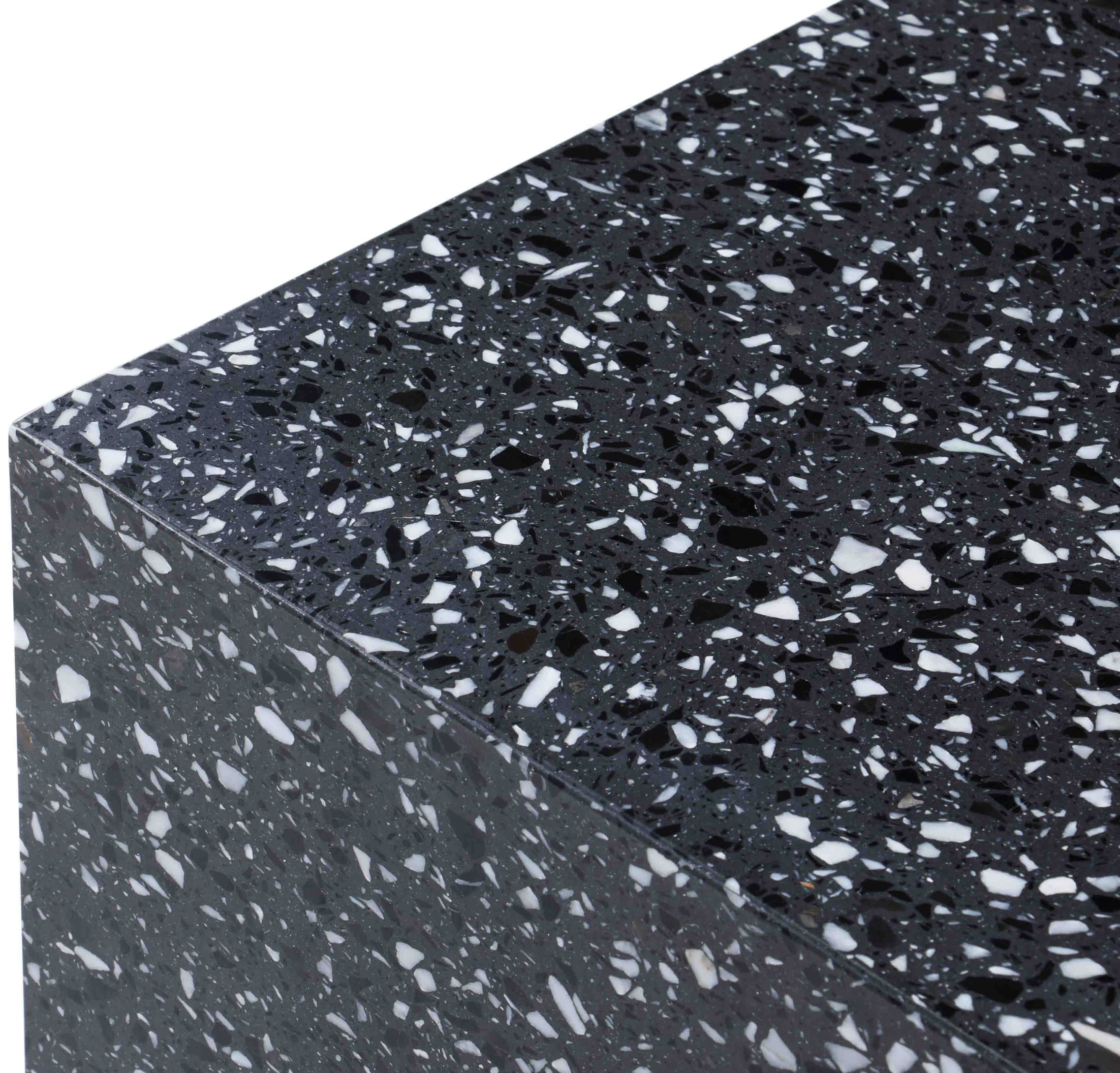
Dark Brown  
Pine Wood  
PWDB



Black  
Pine Wood  
PWB



**TERRAZZO**





# TERRAZZO



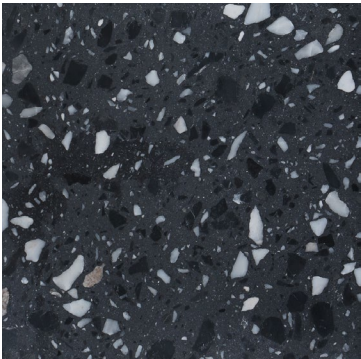
Palm Springs Terrazzo-Multi  
TER04



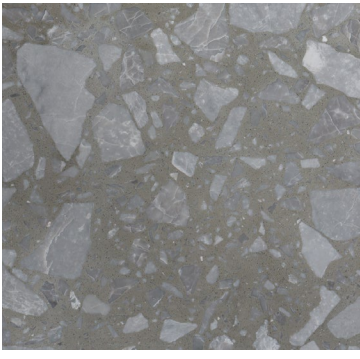
Palm Springs Terrazzo-Yellow  
TER01



Palm Springs Terrazzo-White  
TER02



Black Terrazo  
TER06



Grey Terrazo  
TER05



# MARBLE

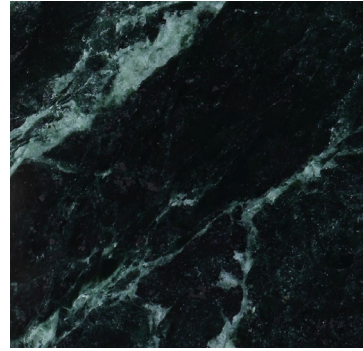




# MARBLE



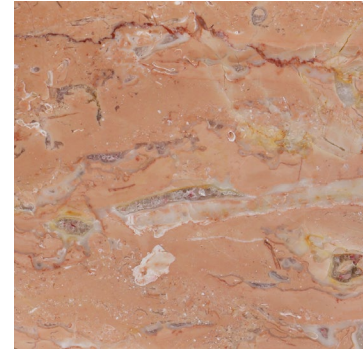
Terrain Marble  
TRM



Hemisphere Marble 1  
HPM 1



Hemisphere Marble 2  
HPM 2



Hemisphere Marble 3  
HPM 3



Hemisphere Marble 4  
HPM 4



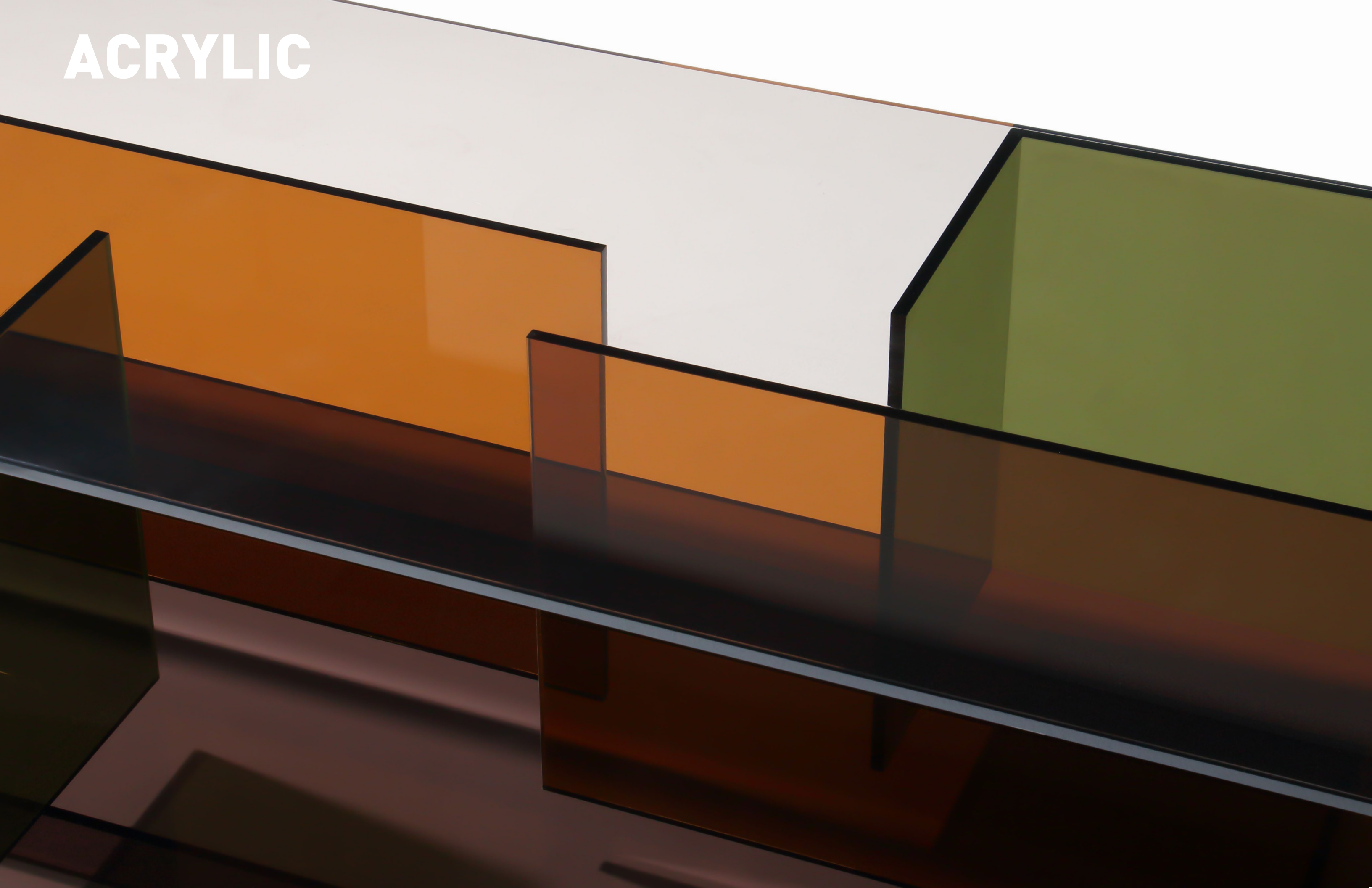
Hemisphere Marble 5  
HPM 5



Italy Grey Marble  
GGM



**ACRYLIC**

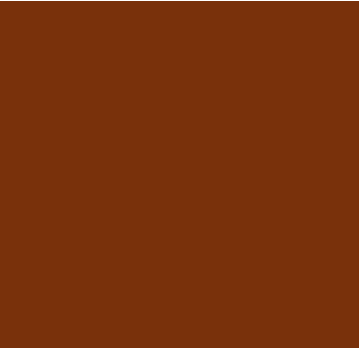




# ACRYLIC



Green Acrylic  
GNA



Brown Acrylic  
BNA



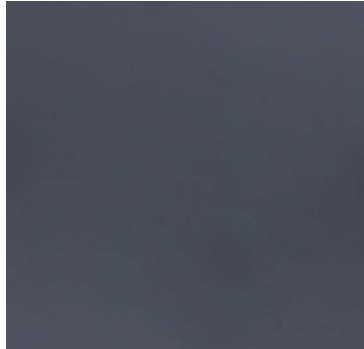
Black Acrylic  
BLA

A close-up photograph of a brown glass lamp. The lamp features a large, curved glass shade and a cylindrical chrome cap at the top. The word "GLASS" is printed in white, bold, uppercase letters on the upper part of the glass. A small screw is visible on the lower part of the glass structure.

**GLASS**



# GLASS



Black Glass  
BLG



Brown Glass  
BNG

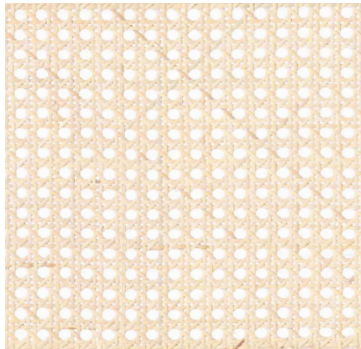




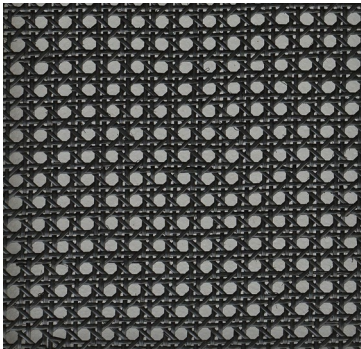
**RATTAN**



# RATTAN



Natural Rattan



Black Rattan

**THANKS FOR UNITING WITH**



**UNITED**  
STRANGERS

[www.unitedstrangers.com](http://www.unitedstrangers.com)