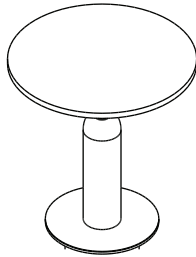


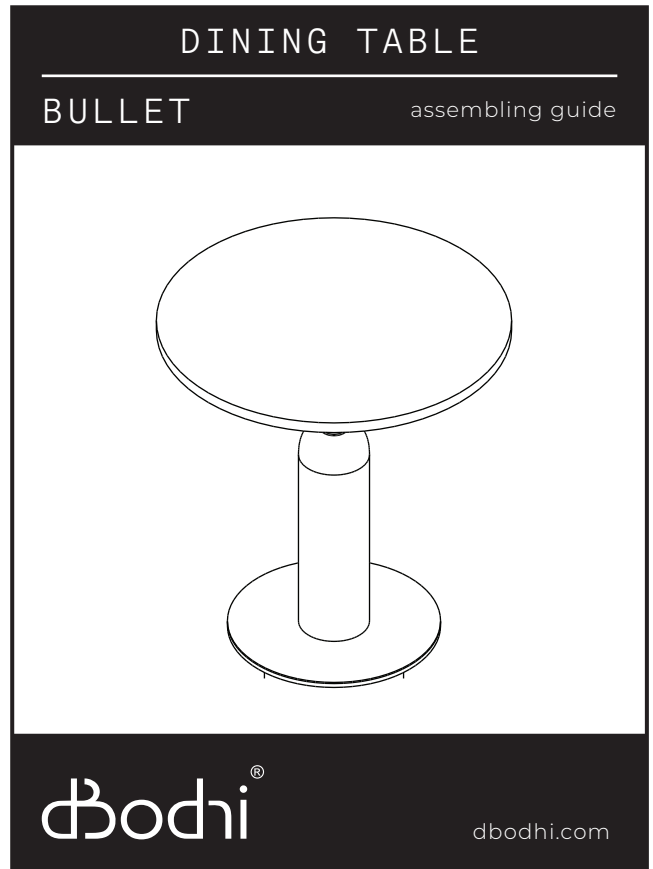
# ASSEMBLING GUIDE

Bullet Dining Table



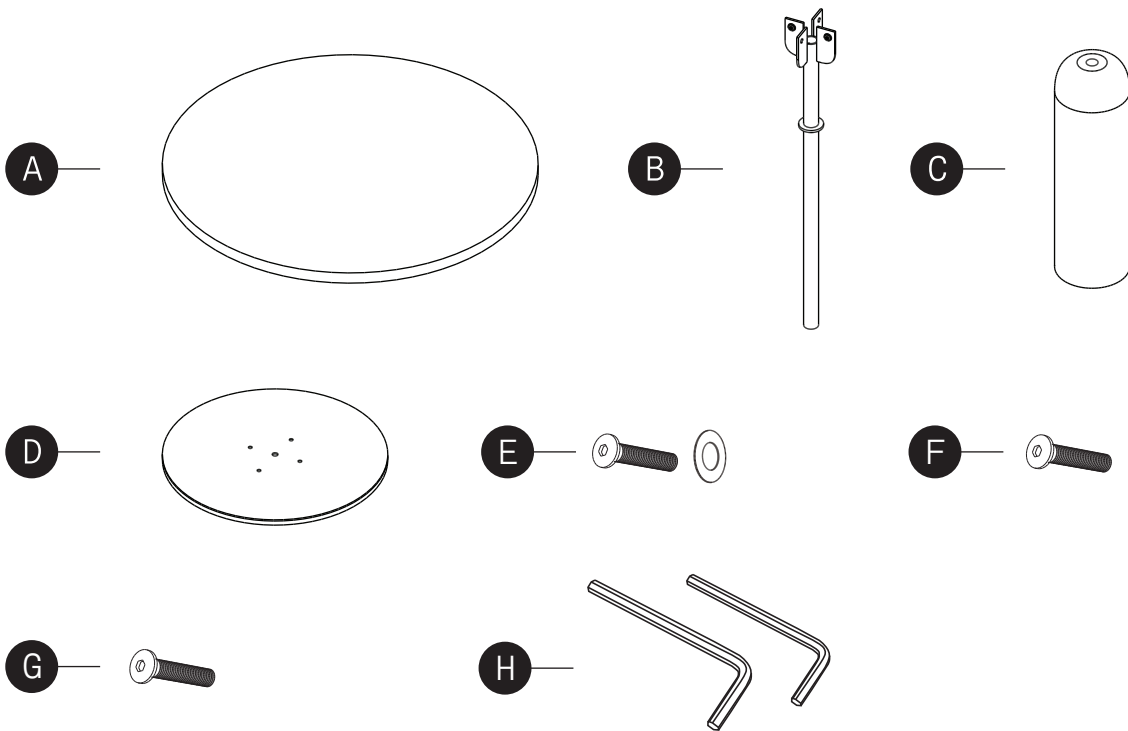
## Material used

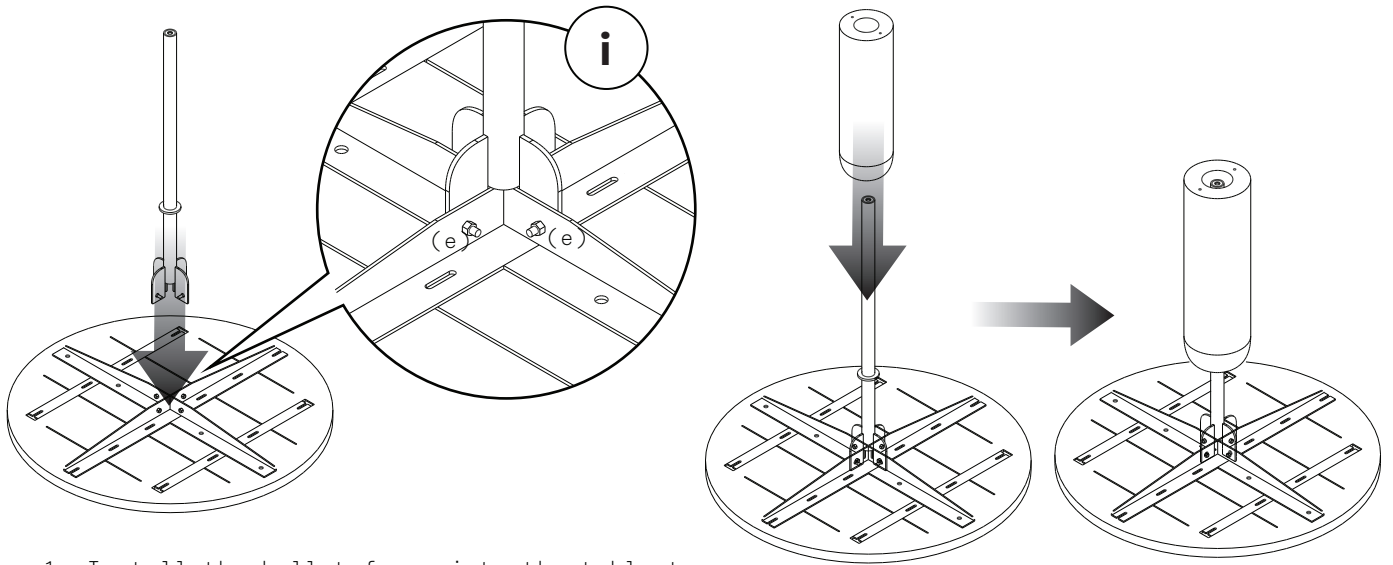
Wood : Finishing Not Polish  
 Iron : Black



## Box Content

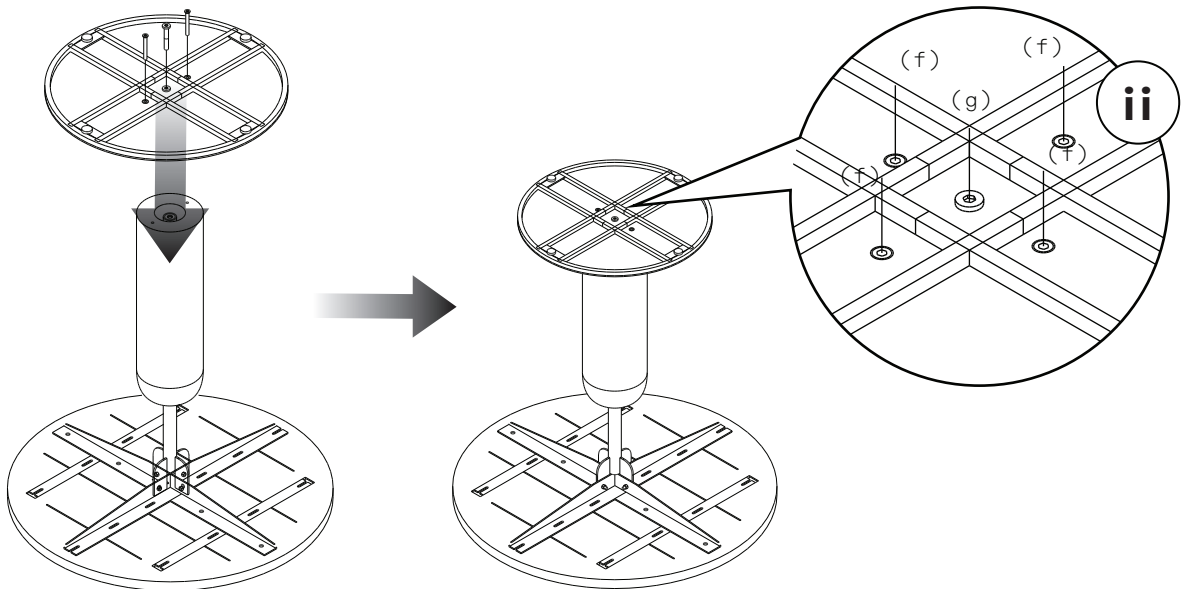
- a. Table top 1 pc
- b. Bullet frame 1 pc
- c. Wooden bullet 1 pc
- d. Bullet leg 1 pc
- e. Hex screw JCBC & rings M6x20mm : 4 pcs
- f. Hex screw JCBC M6x50 : 4 pcs
- g. Hex screw JCBC M8x50 : 1 pc
- h. Tools 2 pcs



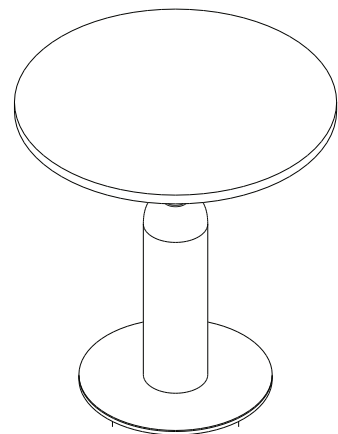
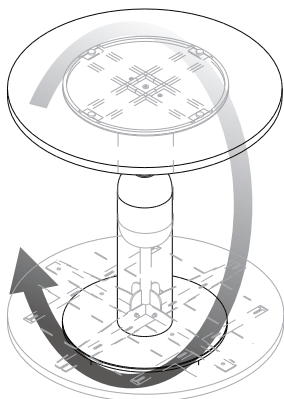


1. Install the bullet frame into the table top and tighten with screw, rings and nut in detail (i)

2. Put the wooden bullet into its right positions as picture above.



3. Install the iron bullet leg into the wooden bullet and tighten with screw as in detail (ii)



4. Rotate the table into its right positions

5. Your dining table is ready to use!