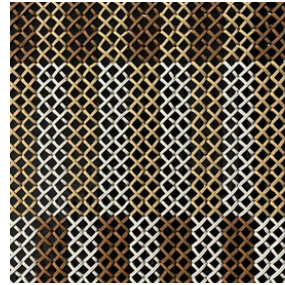
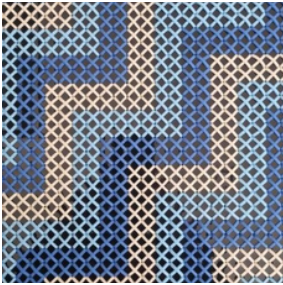


Tukutuku Toi Kit



Ngā mihi nui mai Whatu Creative Ltd

Thank you for supporting our pakihi Whatu Creative Ltd. Tukutuku Toi Kits are designed for you to learn about tukutuku patterns by making your own contemporary tukutuku panel.

Tukutuku- Tāonga Tuku Iho

Tukutuku are an ancient Māori art form traditionally used to adorn the walls of our whare whakairo (carved meeting houses). Tukutuku are made of layers of lattice work that create geometrical patterns. The meanings differ from iwi to iwi but tukutuku carries traditional knowledge of our ancestors throughout the generations. Tukutuku is now a recognized Māori art form being used to adorn clothing, architecture, print and now our Tukutuku Toi Kit.

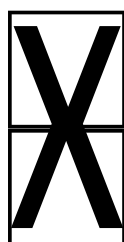
Ngā Rauemi- Resources

- Papa Kōputaputa (Pegboard)
- Aho (Thread)
- Pine (Pin)

Ngā Pūkenga Tukutuku



Kōwhiti

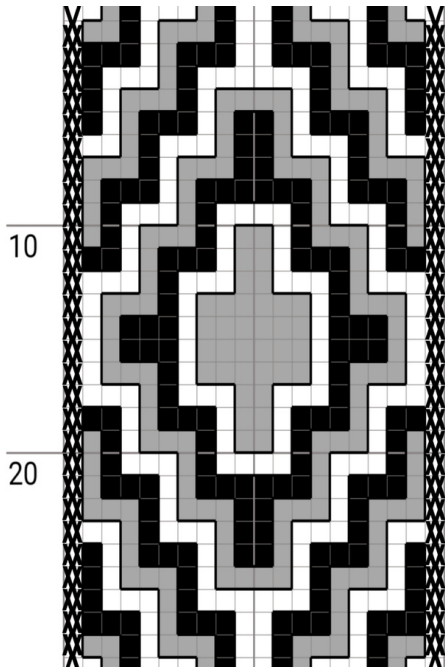


Tūmatakahuki

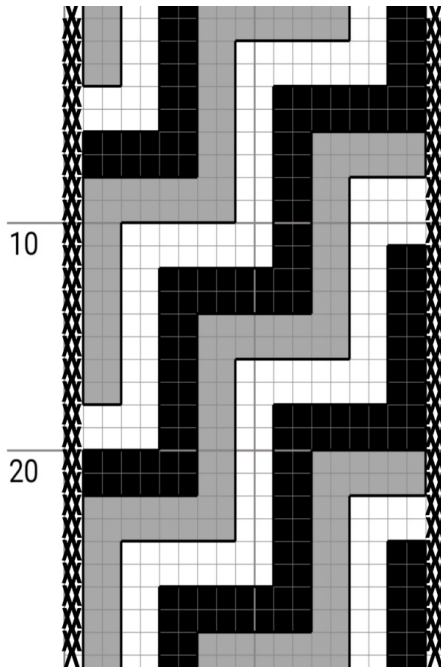
Ngā Kaupapa Tukutuku

The Tukutuku Toi Kit has been designed and measured to make one of 3 patterns provided:

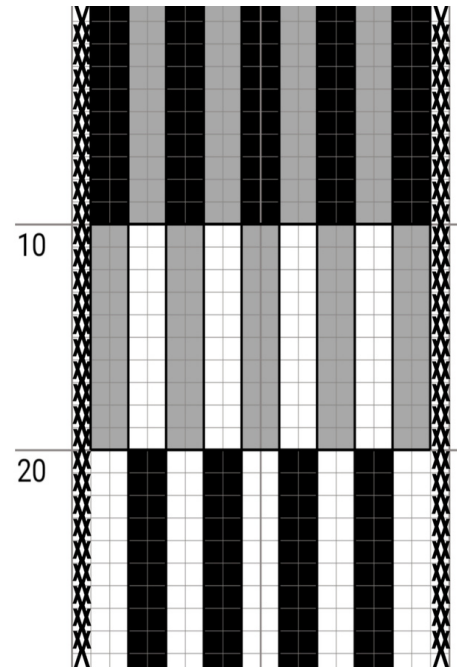
- **Kōtuitui** is inspired by the Pātikitiki design named after the flounder and features its diamond like shape. This pattern represents manaakitanga or abundance in resources particularly kai.
- **Te Aratiatia** is the well-recognised Poutama pattern which takes the shape of stairs. This pattern symbolises whakapapa and the steps ascended to reach achievements in life.
- **Ngā Wai o Whatu** derives from the Roimatatōroa pattern, named after the long tear of the Tōroa- Albatros. This pattern refers to misfortune and devastation that may occur and the shifts that take place as a consequence.
- **Tūmatakahuki**- is the first binding stitch for traditional tukutuku panels to reinforce horizontal and vertical kākaho rods together. The custom pegboard takes away the need for Tūmatakahuki, however we have included this border pattern in our Tukutuku Toi Kit to replicate our traditional tukutuku. We encourage to do this border pattern last to use the last of your aho.



Kōtuitui



Te Aratiatia



Ngā Wai o Whatu

These patterns have been designed to the specifications of your tukutuku board= 30x20 Grid = 31x21 peg

Kaupapa- Pattern

Choose a kaupapa or pattern. You may go by a design, theme or a gift in mind for someone else.

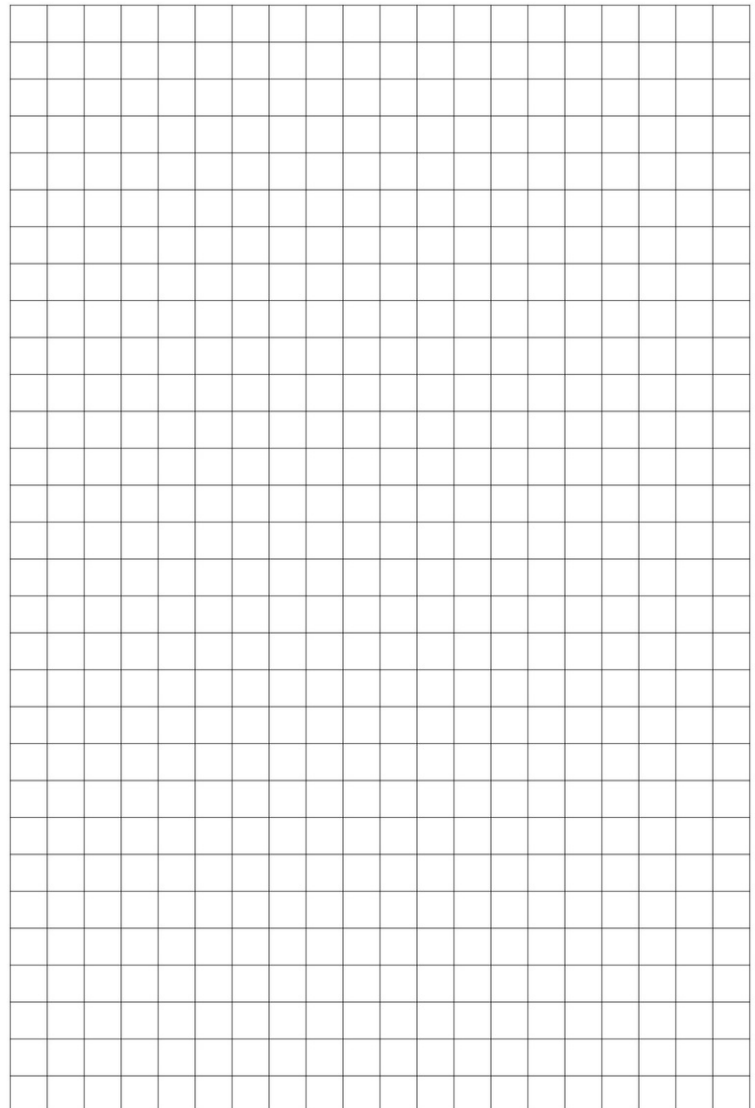
Ngā Tae- Colour Palette



Write down which colour thread will be used to align with 3 colours above as used in patterns.

Whakatakoto Kaupapa- Plan

Get to know your kaupapa- pattern. Make a plan on how you will work through your chosen pattern. Use the grid provided to get familiar with your pattern. Colour in or X each grid.



Mahi Tukutuku

To begin your contemporary tukutuku panel cut a 1-meter length of Aho (thread). As you grow in confidence you may make your Aho longer, or even shorter for the end parts of your pattern.

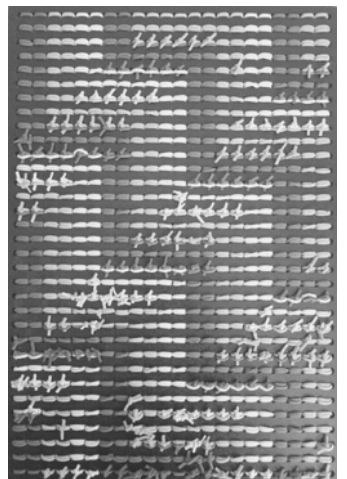
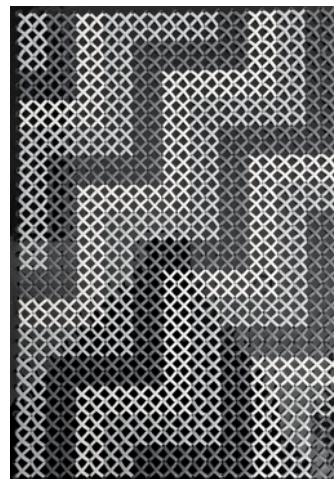
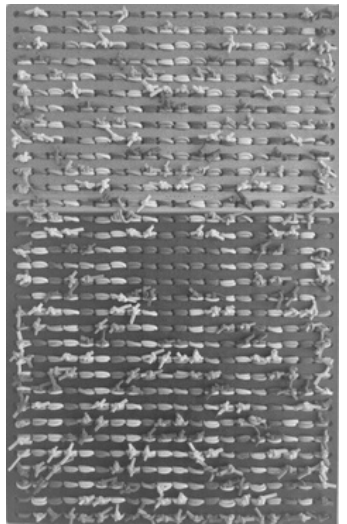
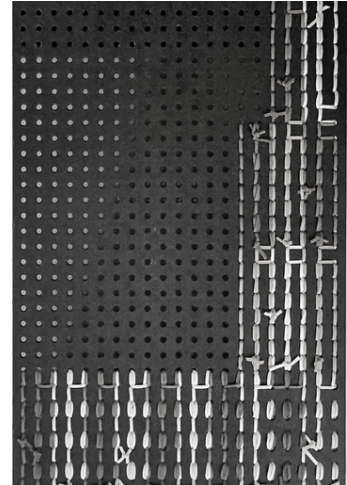
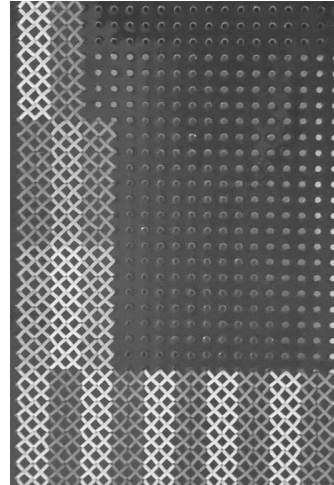
Tuku atu, tuku mai

Next step is to cast your thread off. Put your aho through a peg (hole), pull through back. Aho wants to be pulled halfway along length and weave your aho either verticle or horizontal to come back through the front. You will now have 2 lengths in front to make your first kōwhiti- X, weave aho from front to back. It is encouraged to maintain the same order of kōwhiti- X eg. Left over right. Depending on pattern you will weave your aho back through to front to kōwhiti another grid.

Kaupapa Tukutuku

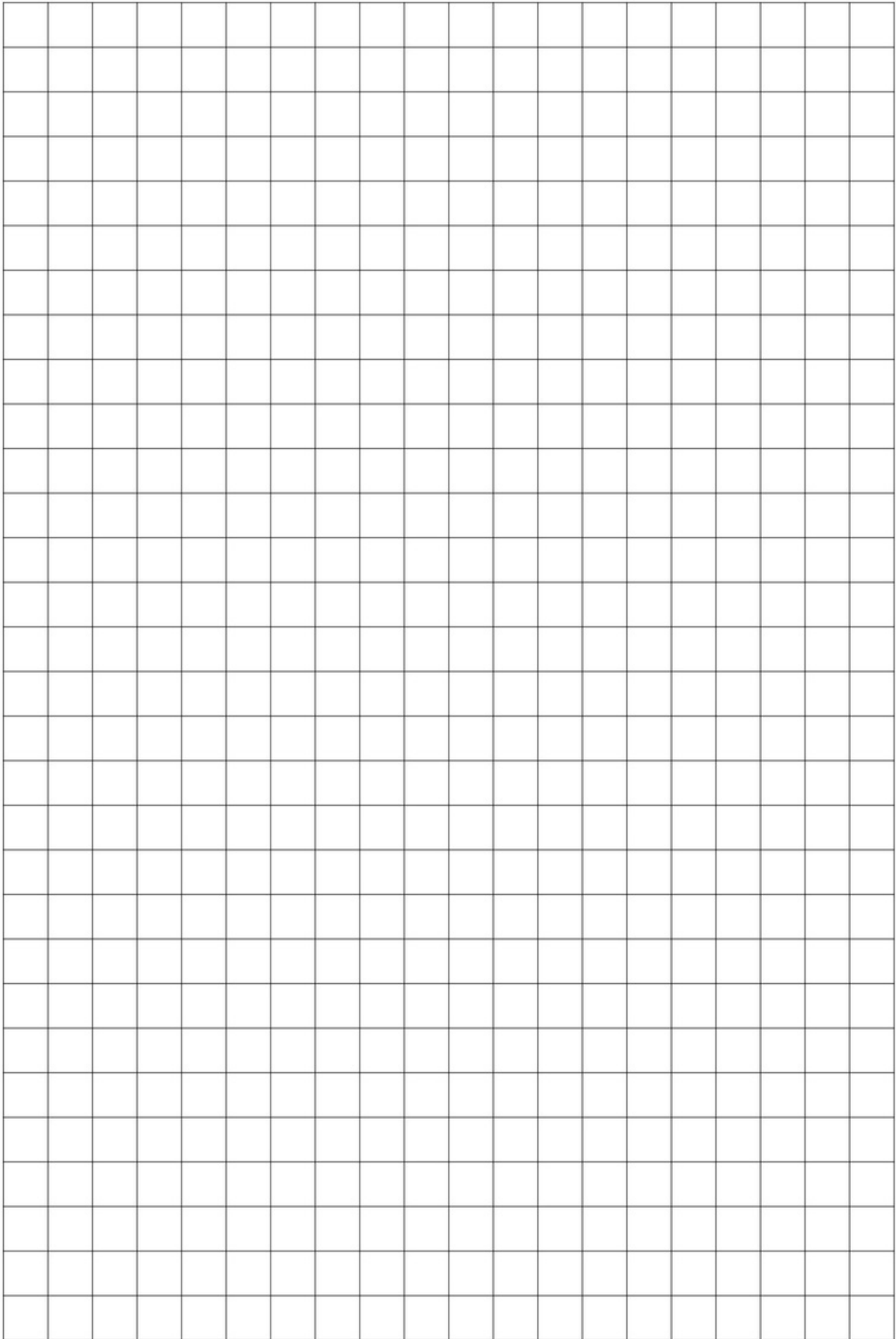
You then repeat the above process working through your tukutuku pattern. The Tukutuku Toi Kit include aho to have kōwhiti (X) on the entire board. The front of your panel exclusively has kōwhiti. The back should feature vertical and horizontal lines only. At the end of a row of pattern or aho you tuck under or tie off with a knot on the back. Trim off cuts and save incase they're needed to finish your panel.

Once your main tukutuku pattern is complete use your left over aho to plan your Tumatakahuki border pattern. Poutama pattern allows for 1 colour, other patterns need 2 colours, so save all your left over aho. To begin your Tumatakahuki pattern begin at the top of your border. Put your aho through the left peg, pull through back. Aho wants to be pulled halfway along length and woven back to the front through the right peg. Unlike kōwhiti, the Tumatakahuki pattern is woven across 2 grids. Once you've made the (X) pattern across 2 grids weave aho through the pegs. From the back the aho will go up 1 peg and through to the front, and repeat this proces down your border.



Please note:

- The examples above are a guide and you may find another flow that suits you better on the back.
- The pine is an aid to push aho through peg. As you progress through pattern it becomes a necessity.
- If you require more aho please make contact with us.



TAG #WHATUCREATIVE ON COMPLETION OF YOUR TUKUTUKU TOI KIT