

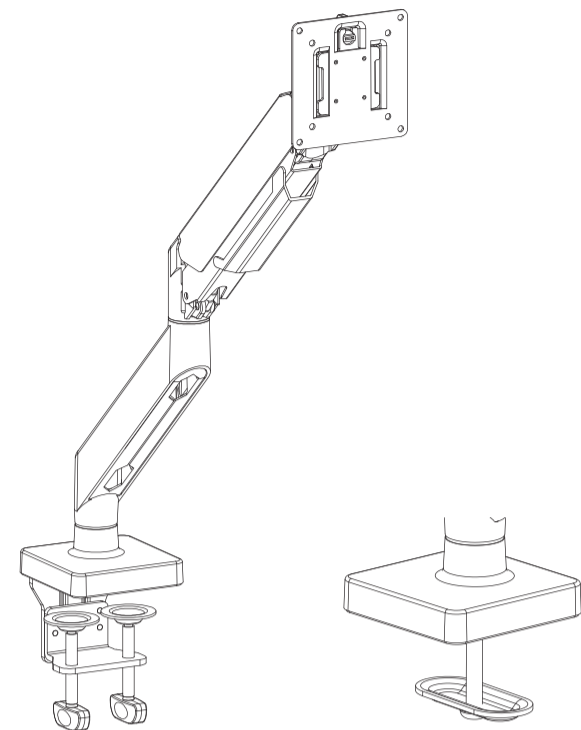
Read the entire instruction manual before you start installation and assembly. If you have any questions regarding any of the instructions or warnings, please contact your local distributor for assistance.

CAUTION: Use with products heavier than the rated weights indicated may result in instability causing possible injury.

- Mounts must be attached as specified in assembly instructions. Improper installation may result in damage or serious personal injury.
- Safety gear and proper tools must be used. This product should only be installed by professionals.
- Make sure that the supporting surface will safely support the combined weight of the equipment and all attached hardware and components.
- Use the mounting screws provided and DO NOT OVER TIGHTEN mounting screws
- This product contains small items that could be a choking hazard if swallowed. Keep these items away from children.
- This product is intended for indoor use only. Using this product outdoors could lead to product failure and personal injury.

IMPORTANT: Ensure that you have received all parts according to the component checklist prior to installation. If any parts are missing or faulty, telephone your local distributor for a replacement.

MAINTENANCE: Check that the bracket is secure and safe to use at regular intervals (at least every three months).



Arisit Pty Limited Australia,
40-50 Mark Anthony Drive, Dandenong South,
VIC 3175 Australia Tel: 1300 762 219

Arisit Pty Limited NZ,
1a Howe Street, Newton, Auckland,
1145 NZ, Tel: (+64) 9 306 1020

Made in China

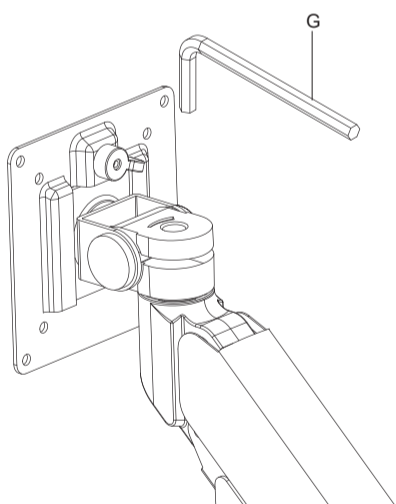
PPMM1-HD



75x75/100x100



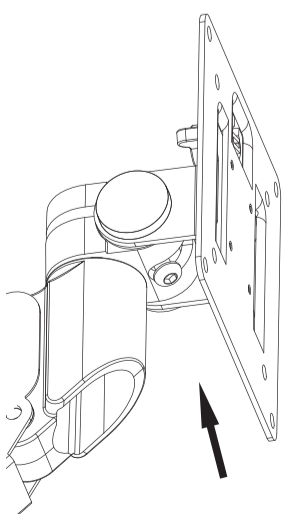
6 Adjust flexibility



- (+) Turn clockwise to tighten
- (-) Turn counterclockwise to loose

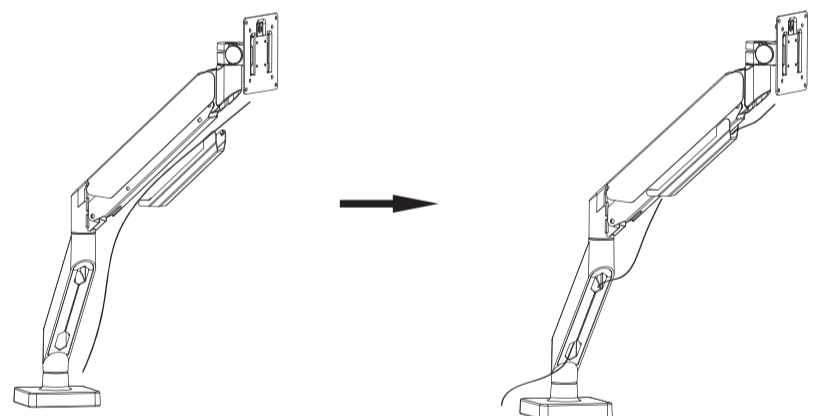
If you feel the pitching angle is too tight or too loose when adjusting the mount, please adjust the screw.

7 Limit screw

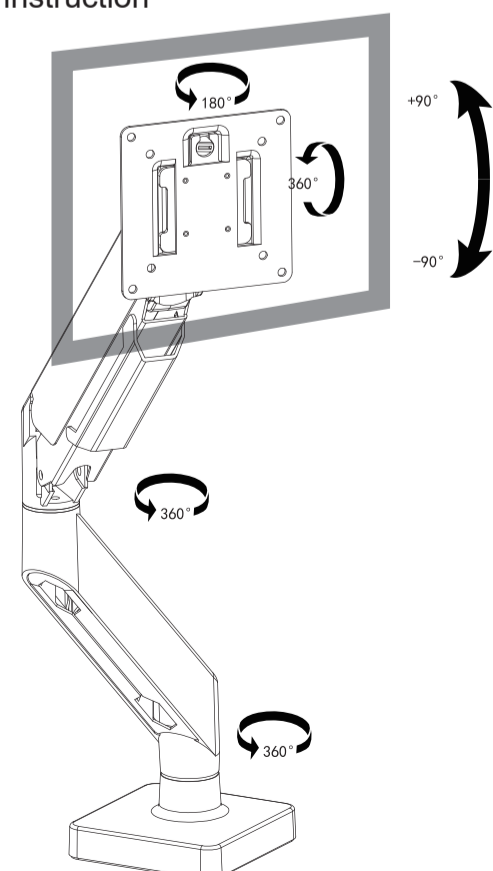


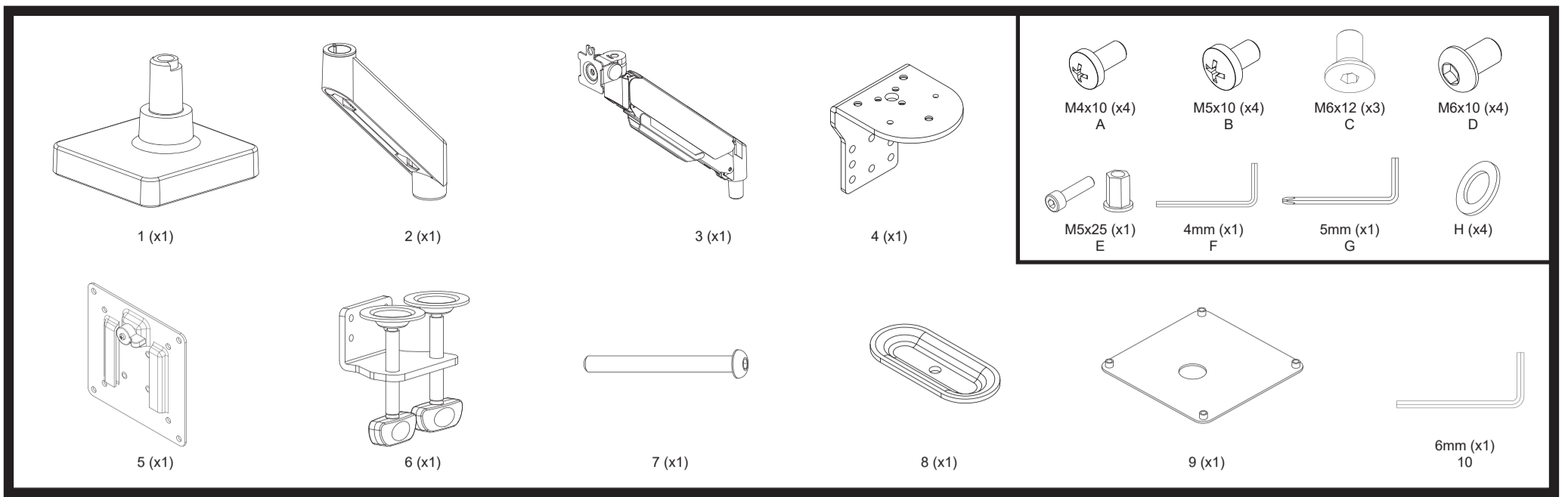
This limit screw can prevent the head from sinking. It can also be disassembled if necessary.

8 Cable management

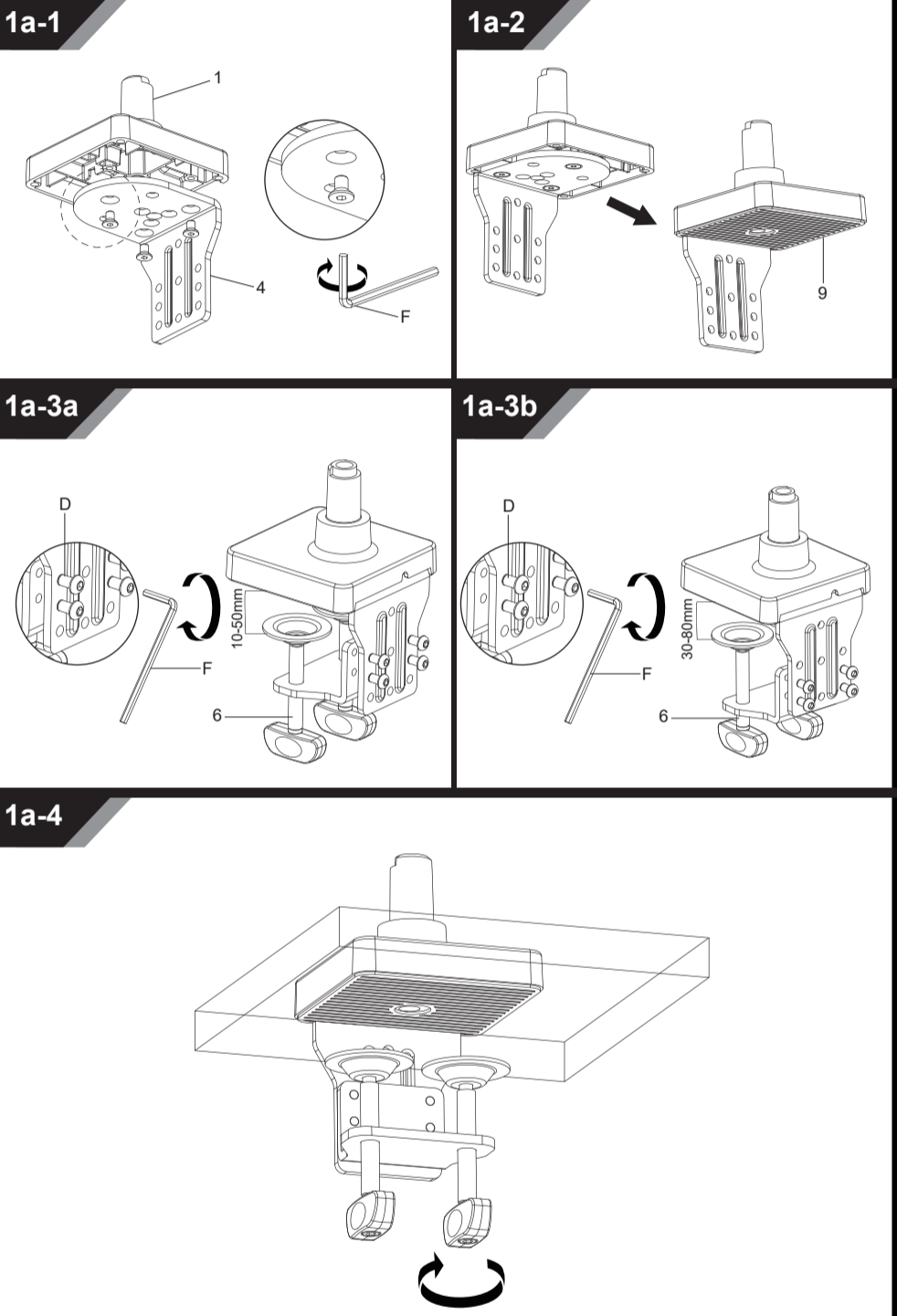


9 Adjustable instruction





Method 1

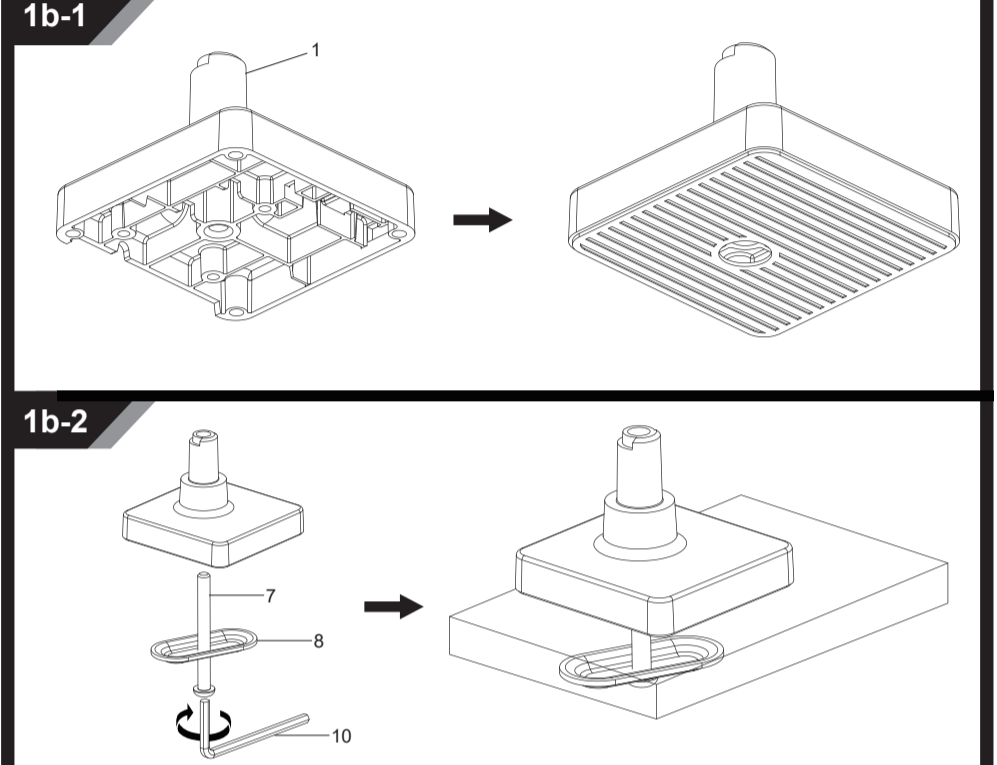


5 Gas spring adjustment

When the arm falls down, turn the adjusting screw counterclockwise(+) to increase the tension of the gas spring, when the arm pops up, turn the adjusting screw clockwise(-) to reduce the tension of the gas spring.
 Note: You may need to turn the screw by many times to tighten the arm.

The force value of the gas spring can be understood through the scale, which is convenient for modification.

Method 2 (desktop has a hole for item 7 go through)



2 Main body installation

The screws on the top are used to limit the position

3 Connect with monitor

Use a wrench (G) to screw the screws (A/B) into the four holes at the back of the monitor to avoid damaging the monitor by over tightening the screws.

4

When the display is inserted into the quick release head, make sure the knob is vertical.

After insertion, rotate the knob 90 degrees to the left.