

# B.

## Berber Point 920

Berber Point 920 is an evolution. A product that has stood the test of time has now shed its skin to offer the commercial space an exploratory carpet experience. The new range delivers variety and creative flex without losing the robust, hard-working attribute that its reputation has been built upon.

### Extended Specifications

Use Classification:	Heavy Commercial
Construction:	Structured Needlepunch
Product Description:	Heavy Commercial Structured Needlepunch
Recycled Content:	Face Fibre - Blend of Stainproof Miracle Fibre & Stainproof Miracle Fibre Eco (Certain Colours)
Fibre Type:	Stainproof Miracle Fibre (Polypropylene)
Standard Size - Broadloom:	4.2m**
Standard Size - Tile:	50x50cm**
Backing - Broadloom/Shapes:	ResinBac
Backing - Tile/Plank:	ResinBac and NexBac
Total Thickness:	± 7mm on ResinBac   ± 7.5mm on NexBac



# B.

## Berber Point 920

### Extended Specifications

Total Mass:	± 1317g/m <sup>2</sup> on ResinBac*   ± 3877g/m <sup>2</sup> on NexBac*
Fire Index:	2 (SANS 10177-4) on ResinBac   3 (SANS 10177-4) on NexBac
Colour Fastness To:	
i) Light	7 (ISO 105-B02)
ii) Rubbing (Wet)	4-5 (ISO 105-X12)
iii) Rubbing (Dry)	4-5 (ISO 105-X12)
iv) Water	4-5 (ISO 105-E01)
Electrostatic Propensity:	≤ 2 kV (DIN 66095 Part 4)
Static Control:	Permanent
VOC Tested:	Pass (GBCSA/GBCA)
Impact Sound Insulation: (ResinBac)	21 dB (EN ISO 10140)

\* Weighted average.

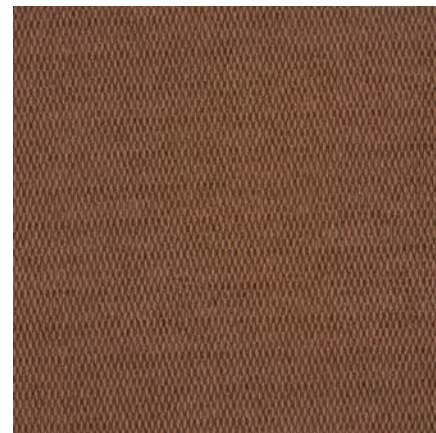
\*\* Also available in 25x100cm planks, 100x100cm tile & Shapes (Chevron left & Chevron right/Hexagon/Right-angle Triangle as per the diagram). Belgotex BERBER POINT 920 to be installed as follows 25x100cm = Herringbone, 100x100cm = Tessellated & Shapes = Belgotex fitting instructions. As these are custom offerings they are not standard, minimum production quantities apply. Please contact your nearest Belgotex representative for more information on this.



# B.

# Berber Point 920

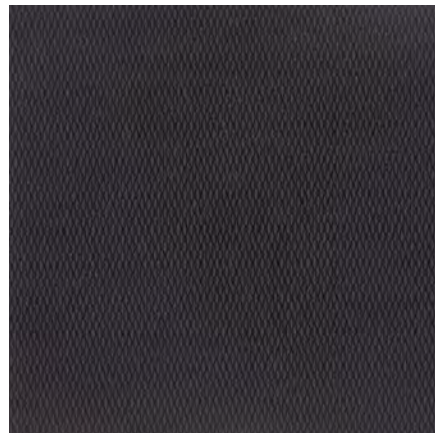
## Accent Colours



Affinity  
L = 29.15 Y = 5.90



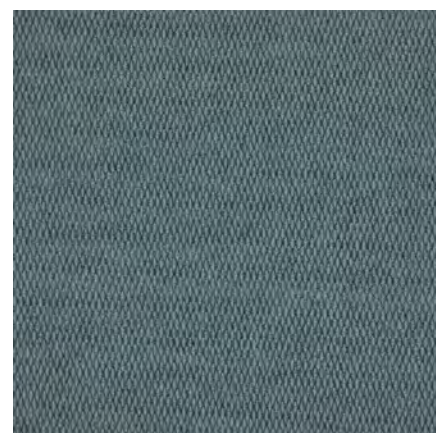
Channel  
L = 30.95 Y = 6.63



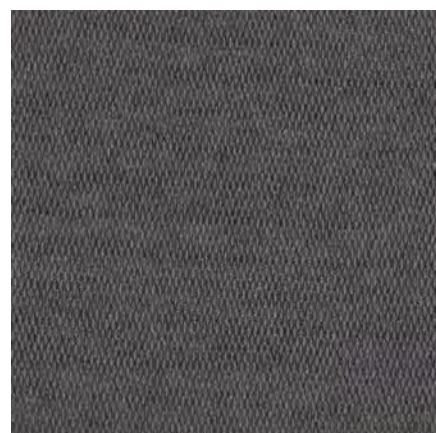
Core  
L = 8.76 Y = 0.97



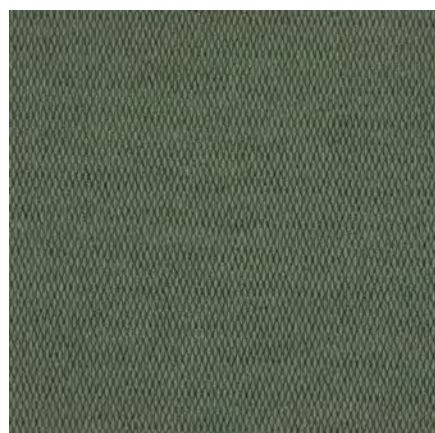
Elevate  
L = 12.68 Y = 1.51



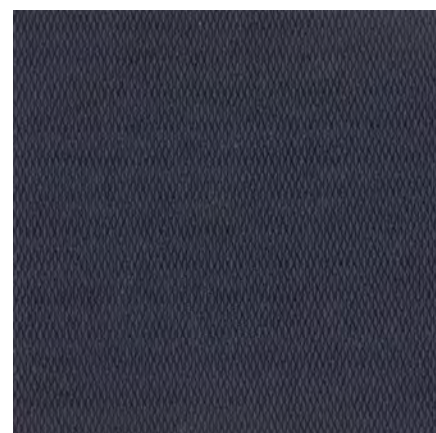
Legacy  
L = 57.06 Y = 24.98



Paradigm  
L = 26.38 Y = 4.88

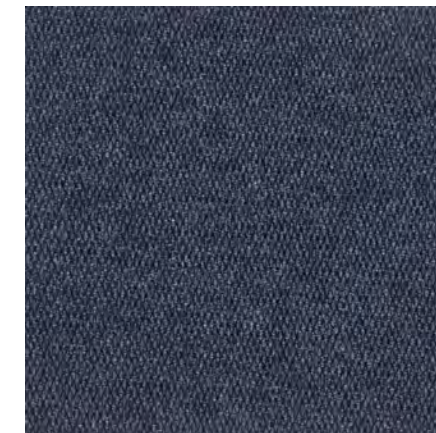


Sequester  
L = 49.23 Y = 17.78

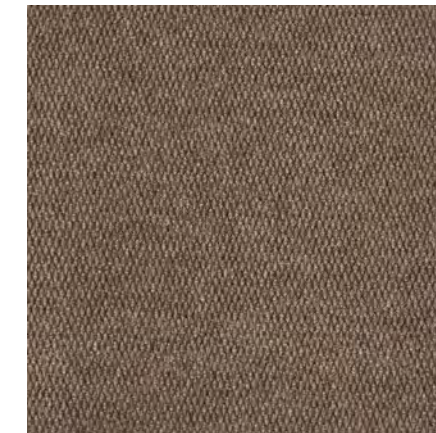


Sphere  
L = 16.65 Y = 2.23

## Solid Colours



Beyond  
L = 21.56 Y = 3.40



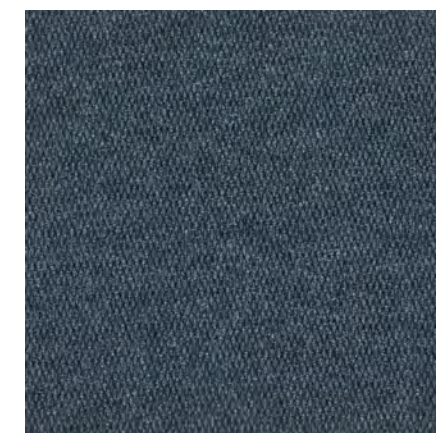
Calibrate  
L = 32.70 Y = 7.40



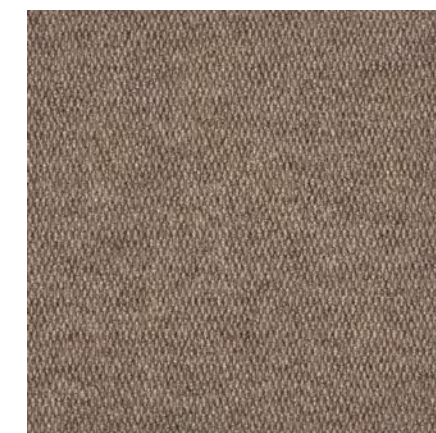
Founder  
L = 25.46 Y = 4.57



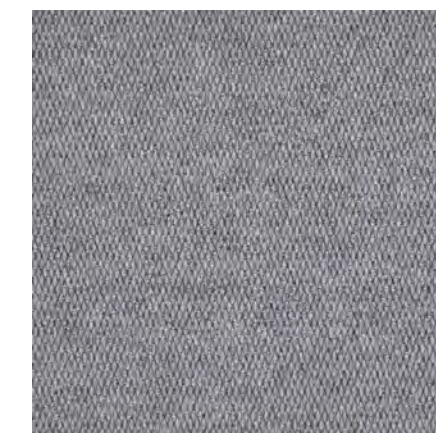
Polish  
L = 33.76 Y = 7.89



Redefine  
L = 26.57 Y = 4.94



Resilience  
L = 39.43 Y = 10.91



Scalable  
L = 40.49 Y = 11.55

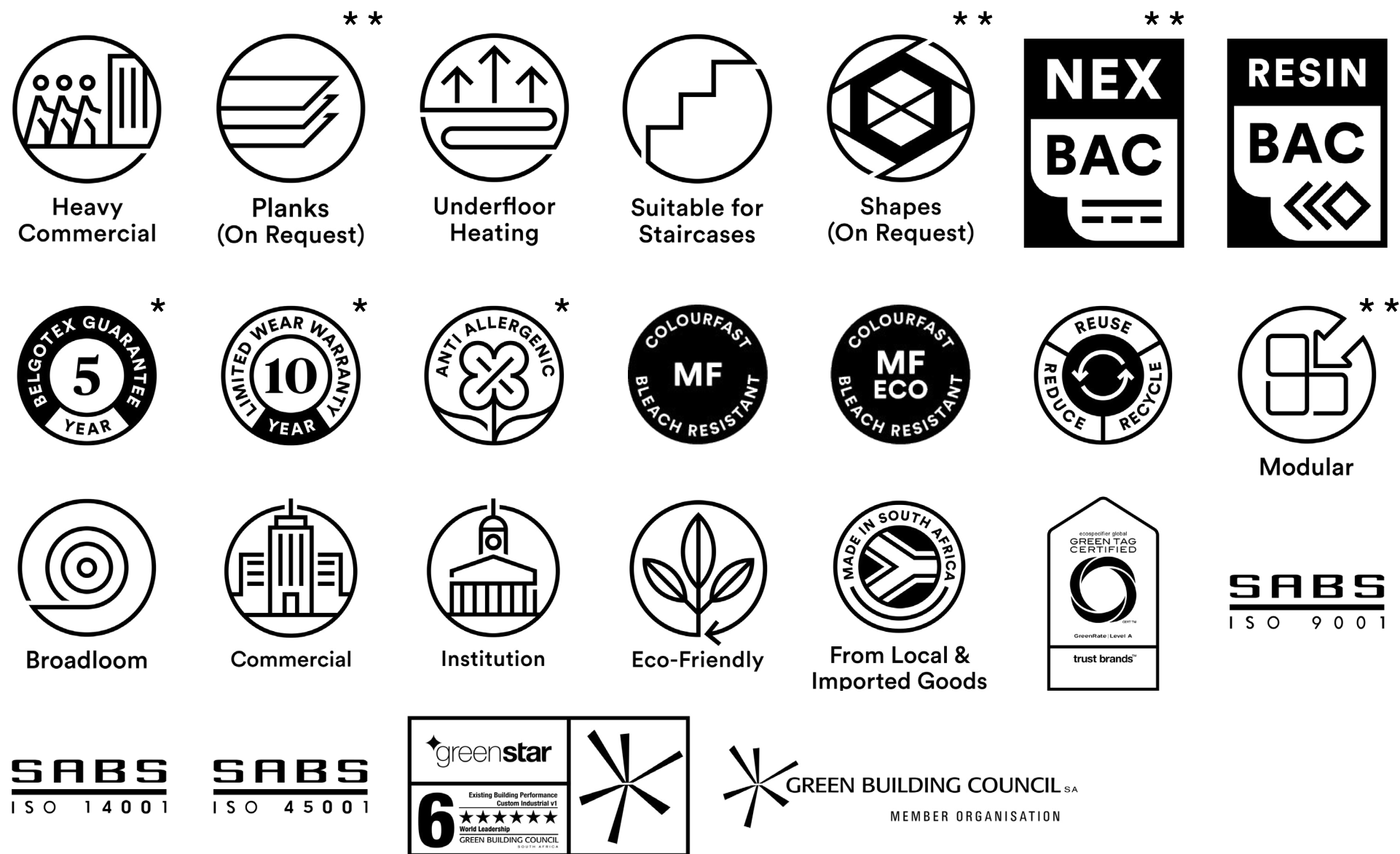


Tactic  
L = 17.74 Y = 2.46

- Accent colours are intended for highlight or drop in colours, and are not suitable for use as a full colour installation in open plan or heavy commercial areas.
- Accent colours are only available in tiles/shapes.
- Accent colours may only be used randomly in up to 15% of the installation.

# B.

## Berber Point 920



### Bill of Quantities

- Belgotex BERBER POINT 920 at 4.2m width ResinBac broadloom & BERBER POINT 920 at 50x50cm ResinBac/ NexBac tiles are manufactured from Stainproof Miracle Fibre (Polypropylene).
- This product is to be laid in accordance with SANS 10186 fitting code of practice.
- Belgotex BERBER POINT 920 ResinBac and NexBac tiles to be installed in tessellated format only.
- Belgotex recommends the use of carpet protector mats where castor wheels are used.
- 5 year guarantee and 10 year warranty.
- Made in South Africa.
- Green Tag A level certification.

\*All product names and logos are trademarks of BELGOTEX FLOORCOVERINGS® (Pty) Ltd. © BELGOTEX FLOORCOVERINGS® (Pty) Ltd. All rights reserved. Warranty and guarantee to limitations and conditions. For details contact BELGOTEX FLOORCOVERINGS® (Pty) Ltd.

\*\*BERBER POINT 920 is also available in MTO Shapes (ResinBac only), 25x100cm and 100x100cm tiles (NexBac only). As these are custom offerings, please contact your nearest Belgotex representative for more information on this.