

Catalogue

MiracleRug™

With Belgotex Miracle Fibre



**Our rugs are
an exceptional
blend of technical
prowess and
tasteful design.**

Each rug is made with Belgotex's Miracle Fibre, which delivers an extremely versatile, hard-wearing product that won't fade, is easy to clean, and can be used indoors and outdoors.

It is the remarkable combination of all of these attributes into a single beautiful product that inspired the name MiracleRug.

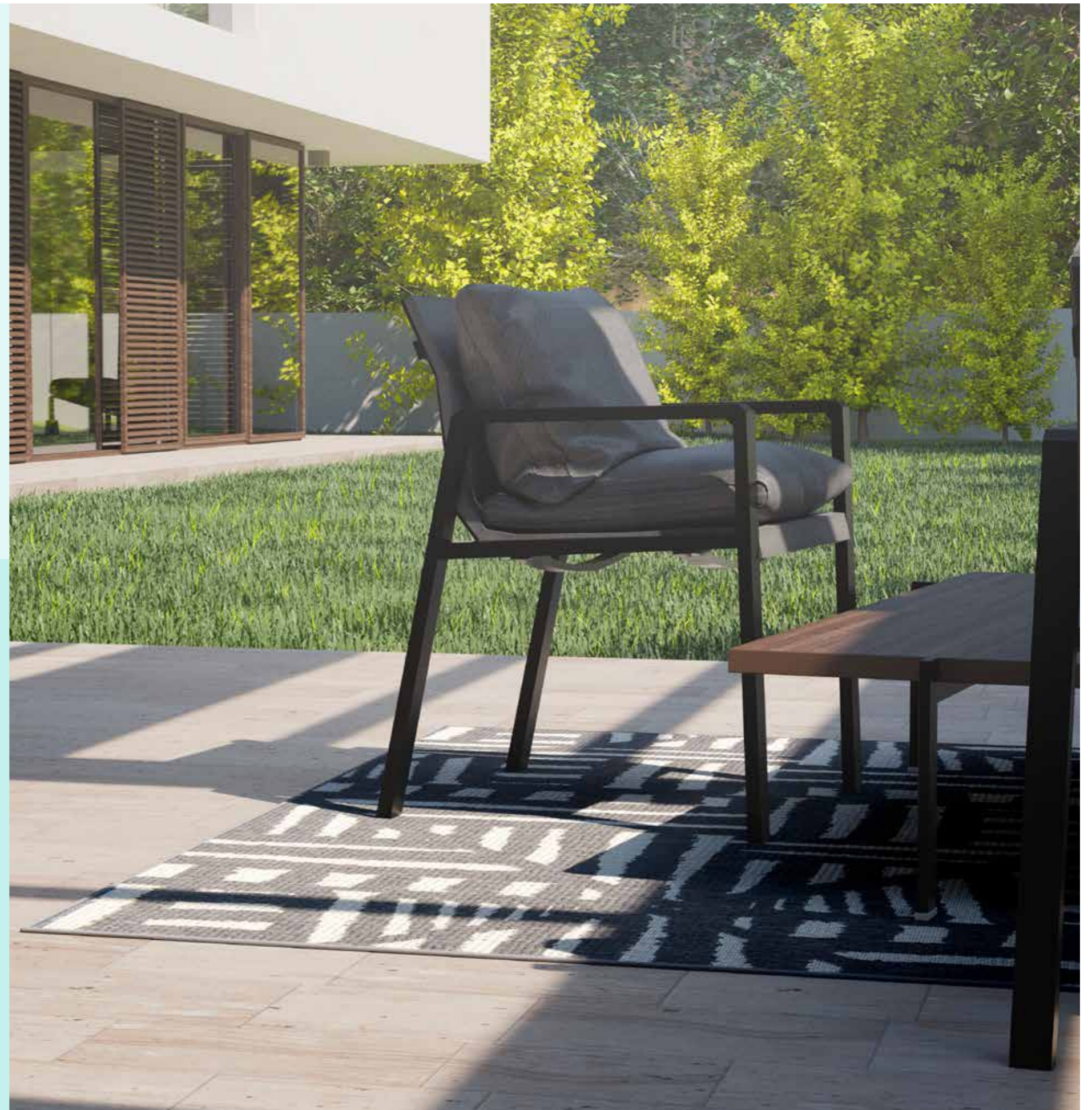
Indoors & Outdoors

Most yarns are dyed towards the end of the manufacturing process. The pigment in our Miracle Fibre yarn is baked in at the point of extrusion, making MiracleRugs perfectly suited to enduring our harsh local climate.

Fadeproof & Rainproof

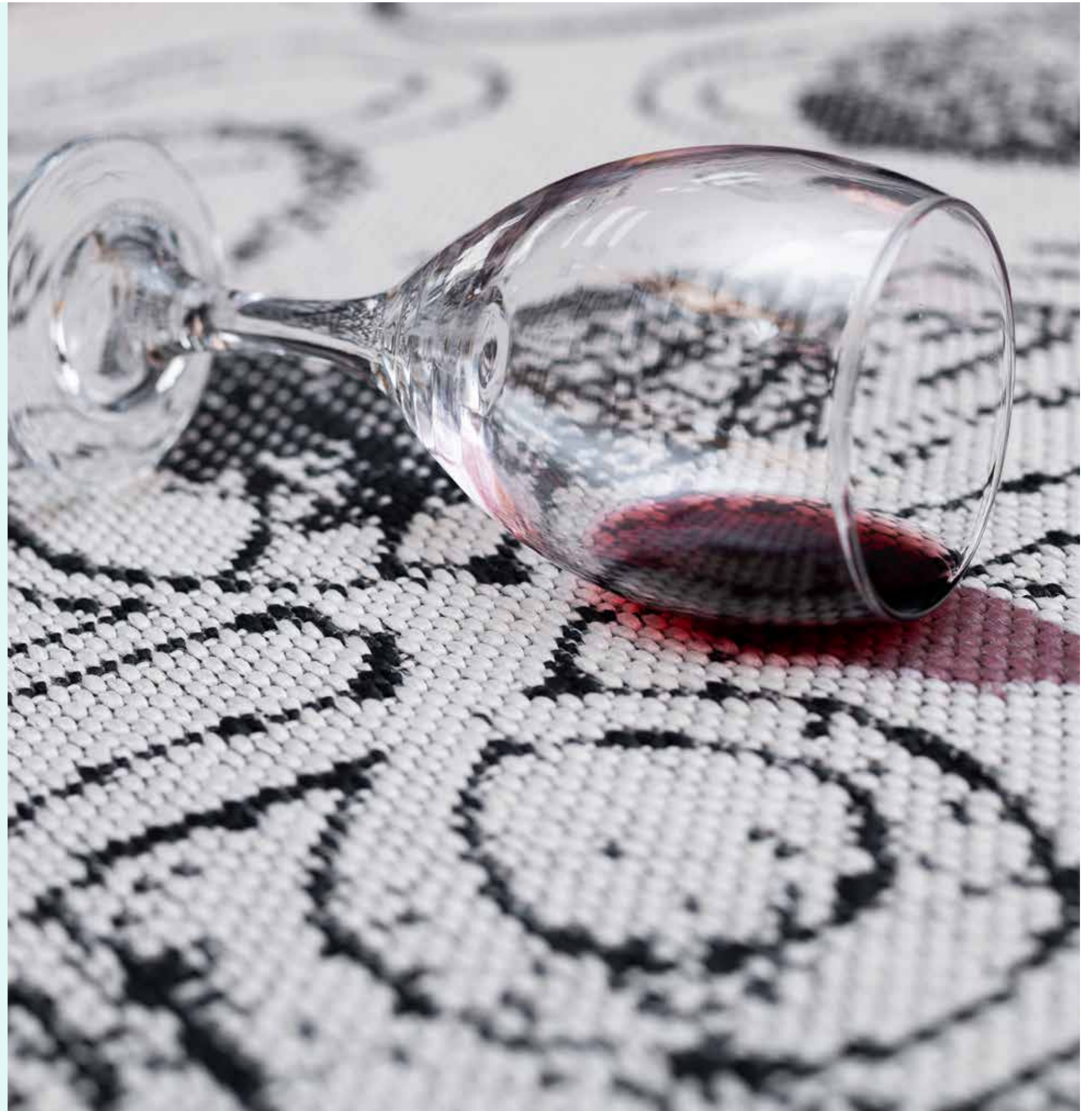
The inclusion of UV stabilisers developed specifically for our harsh African sun makes our rugs fade-resistant. The Miracle Fibre yarn also does not absorb water, which prevents it from clinging to dust, ensuring our rugs are easy to clean and maintain.

Although every precaution has been taken to ensure your new MiracleRug can withstand the harsh African climate, it is always advisable to protect your rug from continuous direct sunlight. Each rug comes with a 1-year warranty.



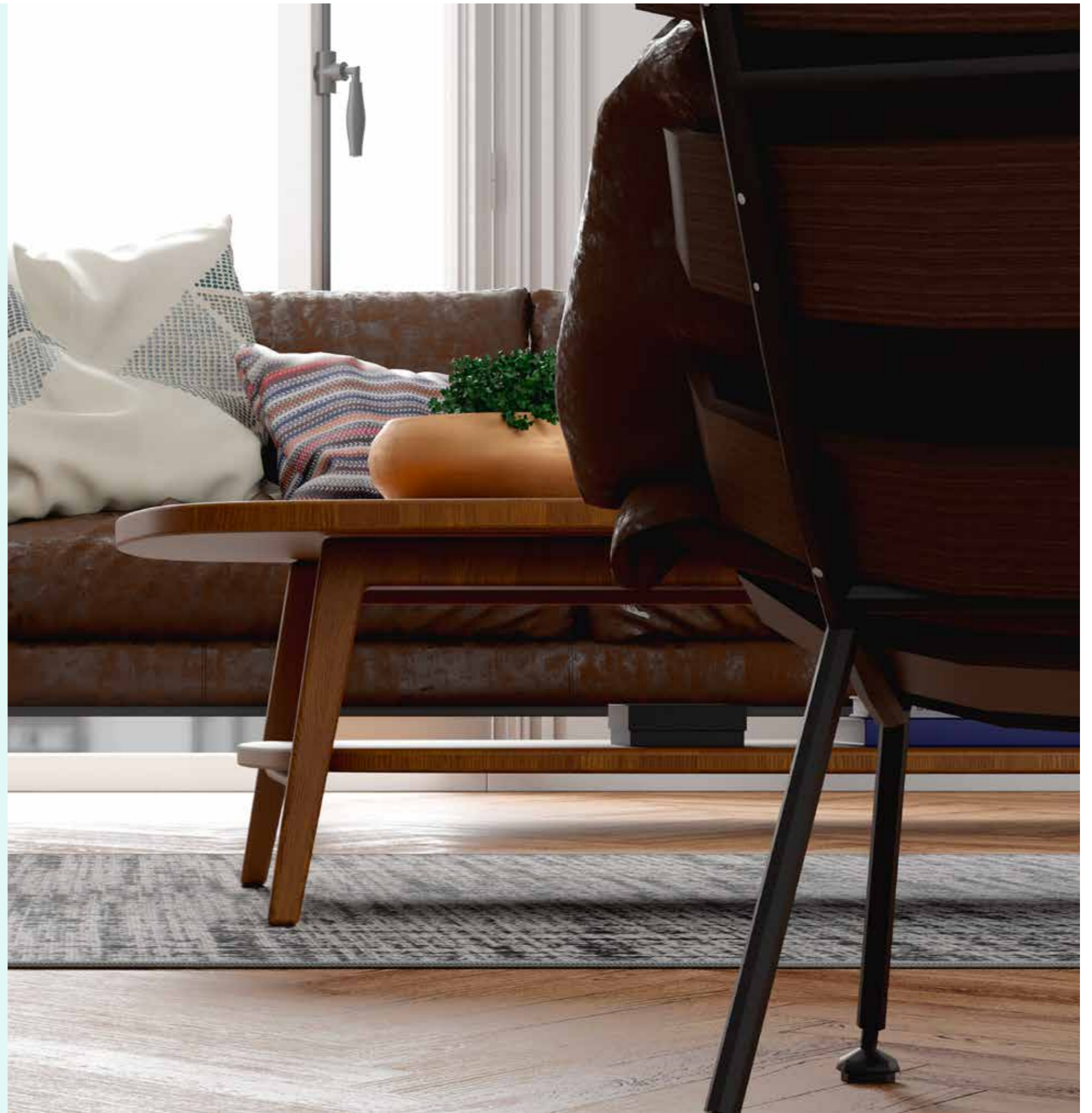
Stainproof

Miracle Fibre has excellent chemical resistance properties which protect our rugs from stains. MiracleRugs can even be cleaned with bleach and acetone without damaging the fibres.



Allergy Friendly

The dust resistance and easy-cleaning properties means MiracleRugs are hygienic, allergy-friendly products.





*2.0 x 3.0 m

1.6 x 2.4 m

0.8 x 2.0 m

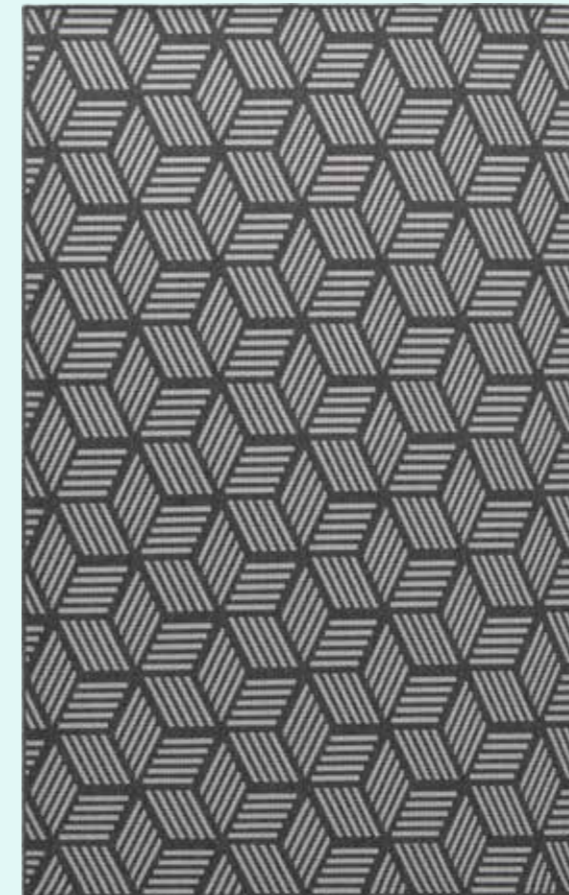
*Featured in image

Illusion.

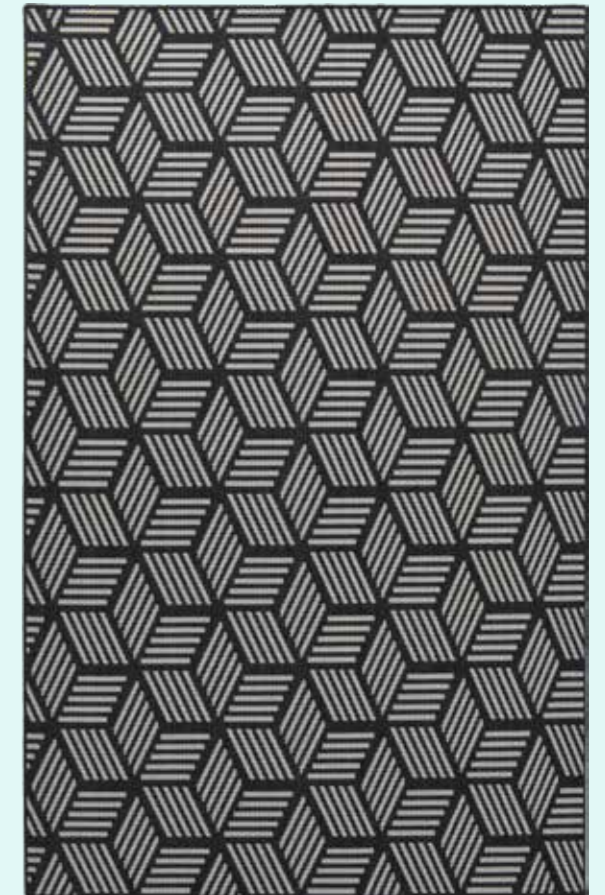
VIEW 3D



Albers



Escher





*2.0 x 3.0 m
1.6 x 2.4 m
*Featured in image

Op Art.

VIEW 3D



Riley



Apollonio





*2.0 x 3.0 m

1.6 x 2.4 m

0.8 x 2.0 m

*Featured in image

Scutes.

VIEW 3D



Pardalis



Spekii





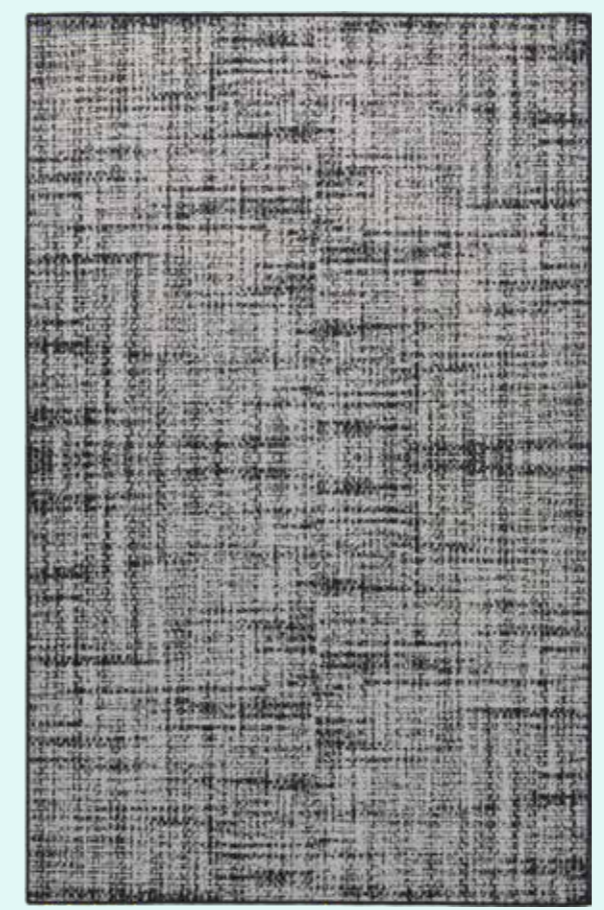
*2.0 x 3.0 m
1.6 x 2.4 m
0.8 x 2.0 m
*Featured in image

Twill.

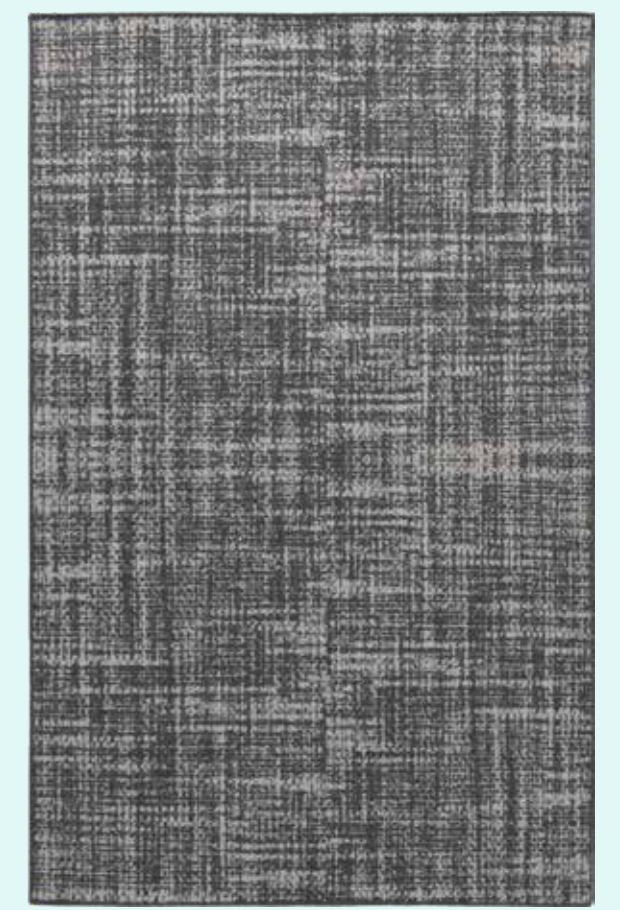
VIEW 3D



Warp



Weft





*2.0 x 3.0 m
1.6 x 2.4 m
0.8 x 2.0 m
*Featured in image

Imprint.

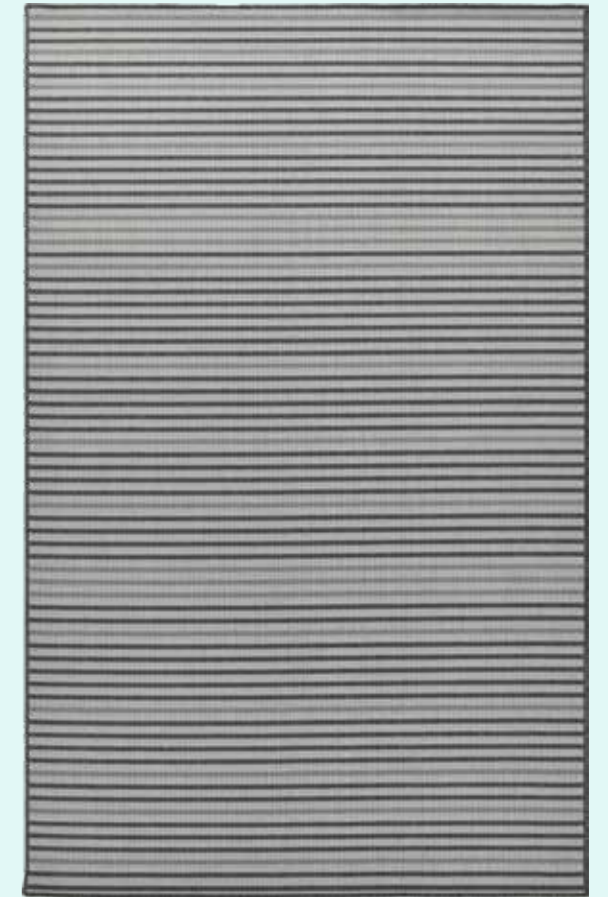
VIEW 3D



Trail



Path





*2.0 x 3.0 m
1.6 x 2.4 m
*Featured in image

Ubuntu.

VIEW 3D



Umusa



Uthando





*2.0 x 3.0 m

1.6 x 2.4 m

0.8 x 2.0 m

*Featured in image



Transcendence.

VIEW 3D



Evolve





*2.0 x 3.0 m
1.6 x 2.4 m
*Featured in image

Placid.

VIEW 3D



Kimlim





Infinity.

VIEW 3D



Batonga



Tarai



Shanga



*2.0 x 3.0 m

1.6 x 2.4 m

0.8 x 2.0 m

*Featured in image



Quadrum.

VIEW 3D



Monochrome



*2.0 x 3.0 m
1.6 x 2.4 m
*Featured in image



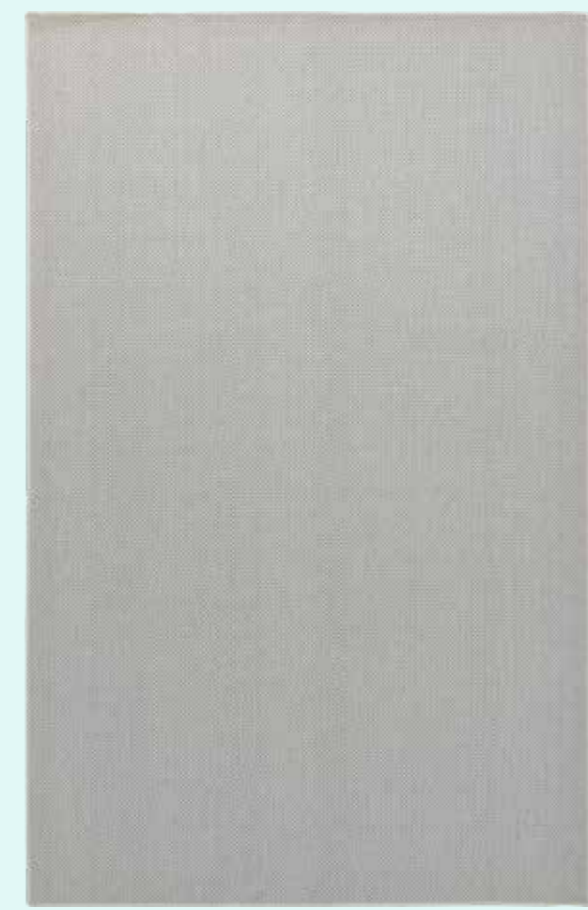
*2.0 x 3.0 m
*1.6 x 2.4 m
*0.8 x 2.0 m
*Featured in image

Schema.

VIEW 3D



Balance



Precision



Cleaning Guidelines.

Belgotex Miracle Fibre is manufactured using solution dyed polypropylene, which does not absorb water, making the yarn stain-resistant and easy to maintain.



Identify the Stain.

MiracleRugs are easy to clean, and most stains can be removed using either bleach or acetone. Refer to the stain table to determine which cleaning method applies.

Stain	Method
Beetroot Juice	👉
Betadine	👉
Butter	👉
Chocolate	👉
Chocolate Sauce	👉
Coffee	👉
Cooking Oil	👉
Cooldrink	👉
Curry Paste	👉
Egg	👉
Grape Juice	👉
Hot Chocolate	👉
Jam	👉
Meat Gravy	👉
Milk	👉
Mud	👉
Mustard	👉
Peanut Butter	👉
Rust	👉
Salad Dressing	👉
Spaghetti Sauce	👉
Tea	👉
Tomato Sauce	👉
Vinegar	👉
Wine	👉
Blood	🔄👉
Mercurochrome	🔄👉
Photocopy Powder	🔄👉
Machine Oil	👇

👉 Bleach Method

👇 Acetone Method

🔄 Requires continuous cleaning and blotting until stain is removed.

Bleach Method.



Cleaning Steps

1. First remove as much of the foreign material as possible: carefully scrape off thick or sticky material with a spoon, vacuum up crust pieces if it is dry, or blot with a white paper towel if the stain is liquid.
2. Mix a solution of 50% clear household bleach & 50% warm water in a spray bottle. Use clear, pure household bleach containing no additives. Perfumed bleach can also be used.
3. Spray the solution directly onto the rug in the affected area — do not over-wet.
4. Blot the surface, working from the outside of the stain to the centre of the stain to prevent spreading. Repeat this procedure until the stain disappears.
5. Spray with clean water and blot repeatedly until all bleach is removed.
6. Use white absorbent paper towels weighted down with a heavy object to absorb any remaining moisture.
7. When completely dry, lightly vacuum.

⚠ Deal with stains as soon as possible. The faster you act, the more successful the results.



Acetone Method.

⚠ This method only applies to machine oil stains.



Cleaning Steps

1. Remove as much of the stain as possible by blotting or scraping up.
2. Apply a small amount of pure acetone or nail polish remover to a white cloth and work in gently — do not over-wet.
3. Blot the surface, working from the outside of the stain to the centre of the stain to prevent spreading. Repeat this procedure until the stain disappears.
4. Use white absorbent paper towels weighted down with a heavy object to absorb any remaining moisture.
5. When completely dry, lightly vacuum.

⚠ Deal with stains as soon as possible. The faster you act, the more successful the results.

⚠ Acetone is available at pharmacies.



MiracleRug™

With Belgotex Miracle Fibre

SABS
ISO 9001



Residential



Underfloor



Eco-Friendly

Belgotex™

—
belgotex.co.za