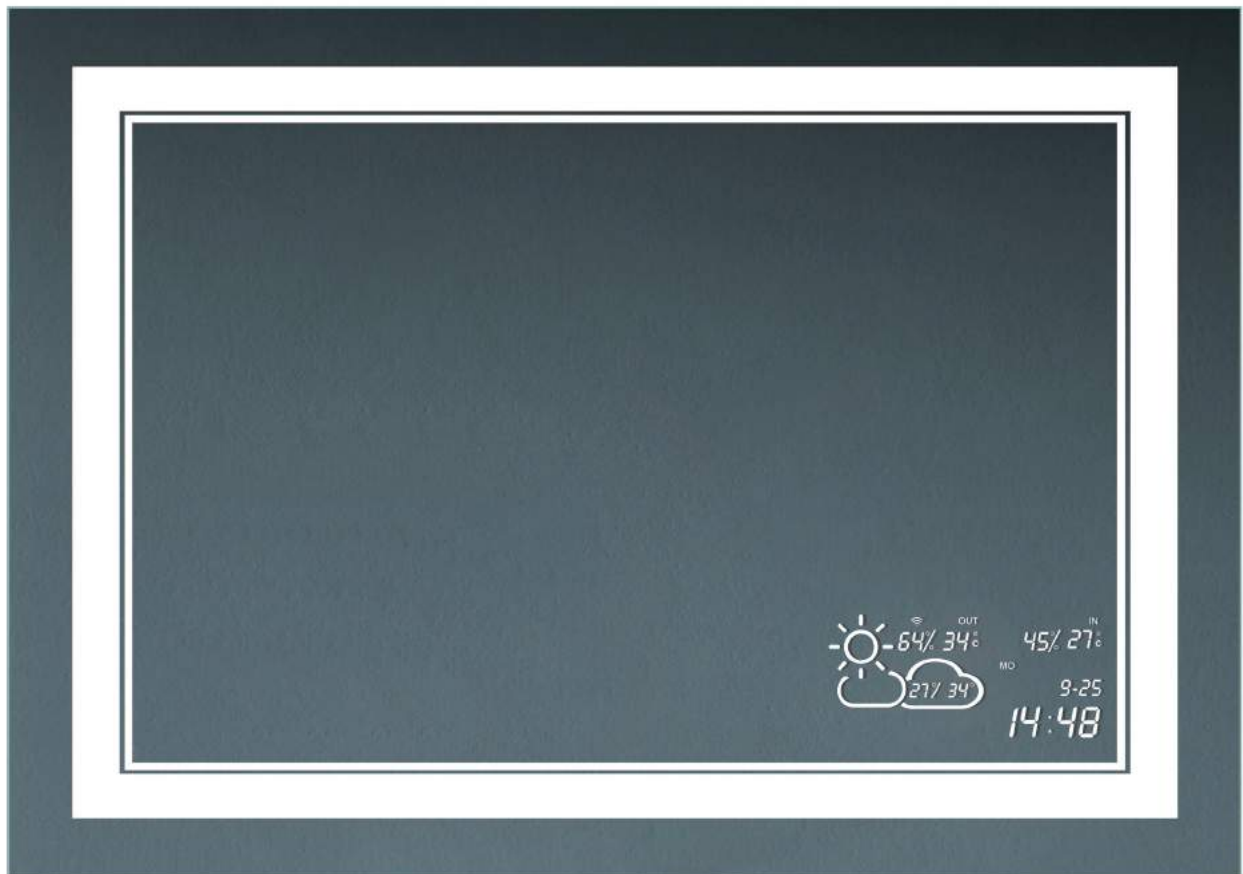


INIYOUTHS

- Installation
- Notes

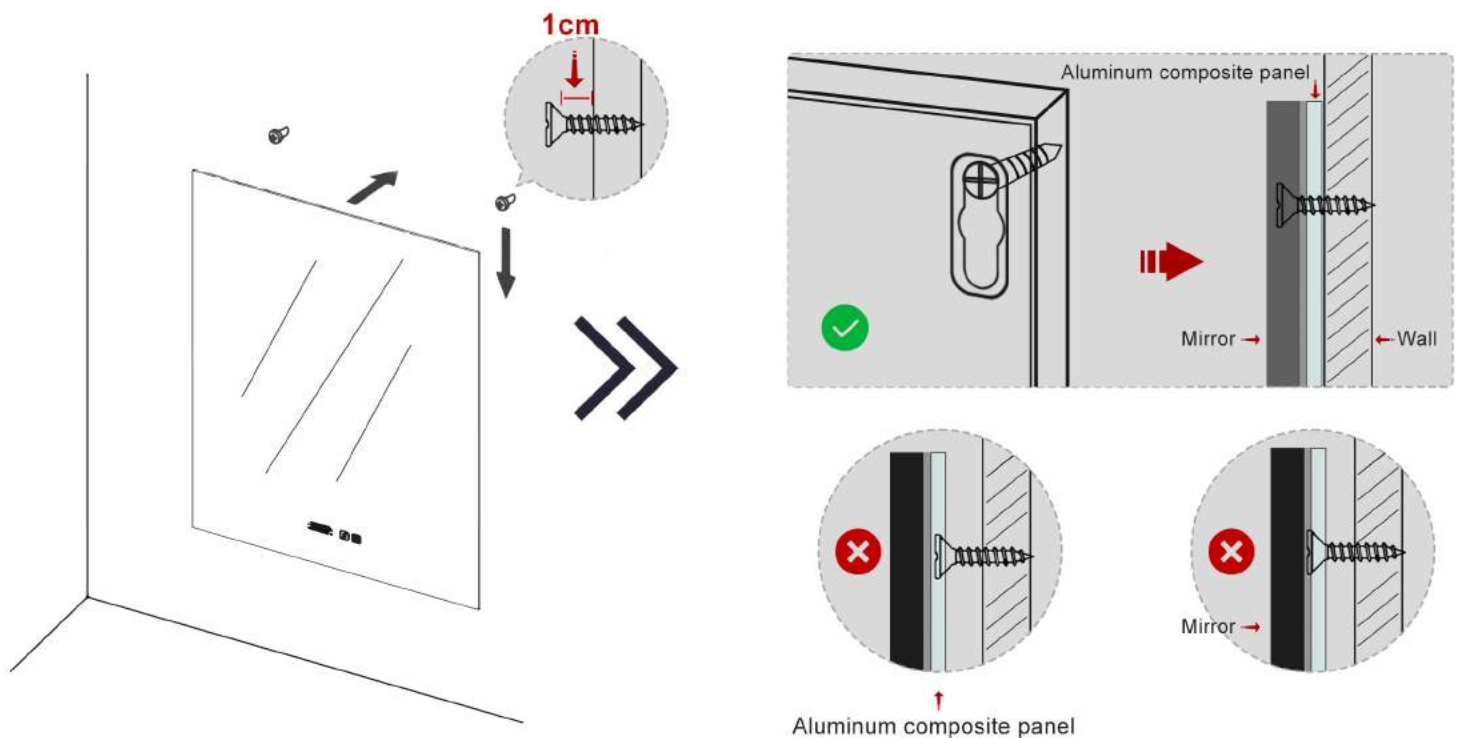


- User Manual

Installation and Precaution for Mirror with Drilling

⚠ Installation Precautions

1. Please measure the length of the nail outside the wall using a ruler, making sure there is at least **1 cm** of length.
(If it is less than 1 cm, there may be a risk of the mirror **falling** due to its own weight.)
2. If the measurement is less than 1 cm, please drill a new hole, and reinstall strictly according to the first point's requirement.



Instructions on the back of the mirror:

The mirror consists of a main body and a back panel. The frame of the main body is made of aluminum alloy, and the back panel is made of aluminum composite material. Please ensure that the screws are long enough to penetrate the holes in the aluminum alloy frame, with at least **1 cm** protruding from the wall to properly hang the mirror.

After installation, please check if it is secure.

Light push test: Gently push the mirror with your hand to check if there is any shaking or loosening. If the mirror remains stable, without any shaking or loosening, it can be considered that the mirror is securely installed.

Vibration test: Gently shake the wall by hand and observe if the mirror shakes or loosens. If the mirror remains stable, without any shaking or loosening, it can be considered that the mirror is securely installed.

Installation and Precaution for Mirror with Clips

Step 1

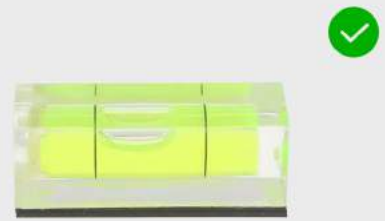
Verify the contents of the package to ensure you have two mirror clips, three screws, three wall plugs and a level.



Clips x 2



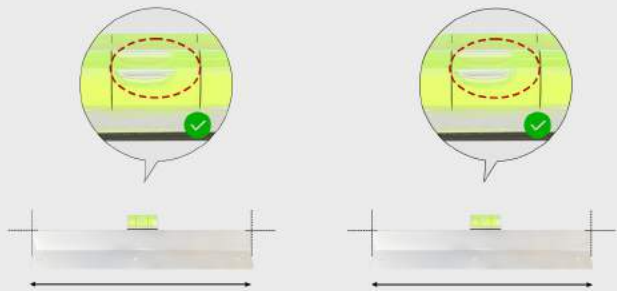
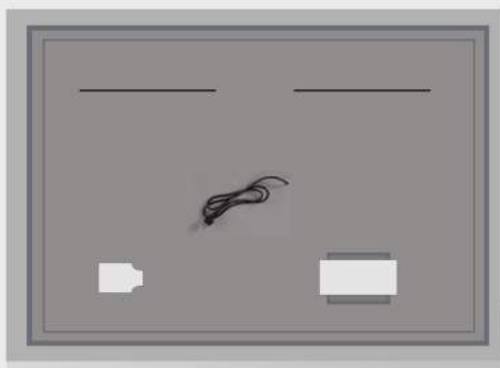
Wall plugs & Screws x 3



Level

Step 2

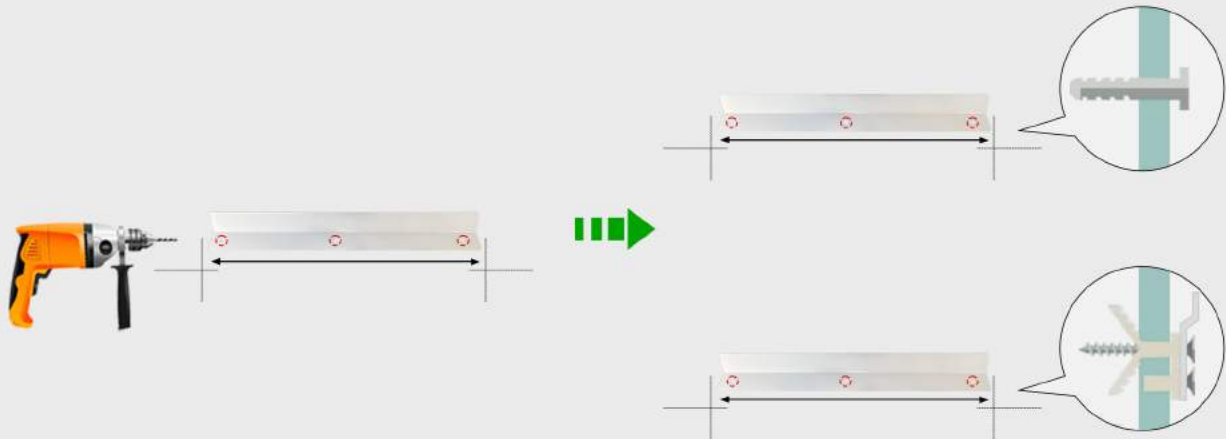
Check the specifications and positioning requirements on the back of the mirror. Use a level to ensure a level surface without any deviations, and mark the drilling points on the wall.



Note: The white bubble in the middle of the level should be centered to indicate that the mirror is horizontally positioned.

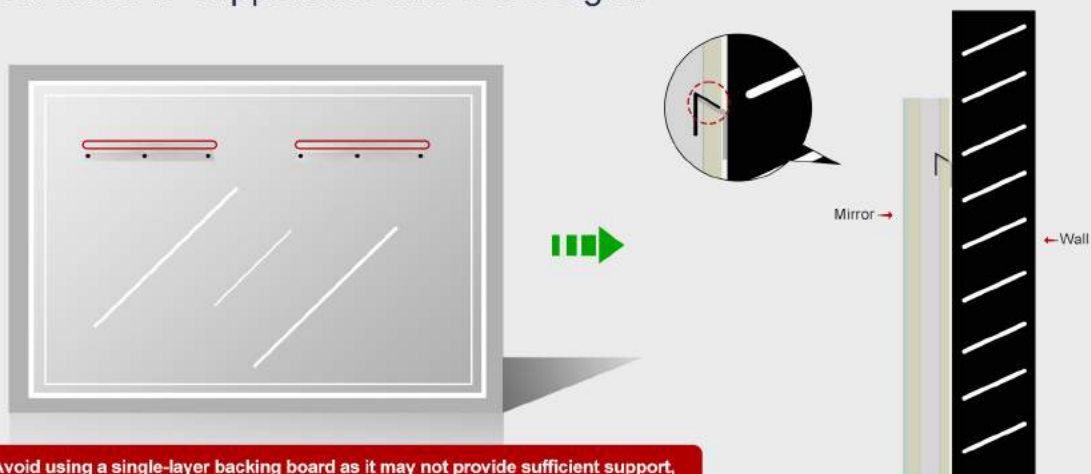
Step 3

Use a power drill to create holes at the marked positions on the wall. Insert the wall plugs into the holes and secure them firmly with screws.



Step 4

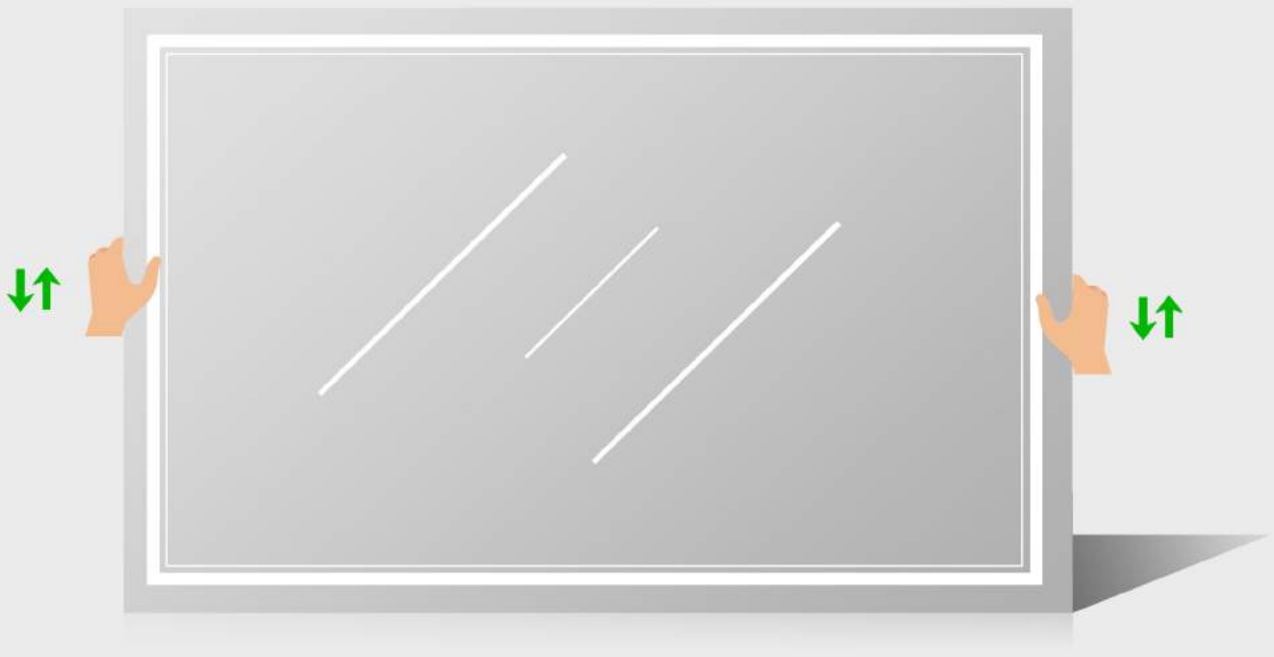
Align the mirror with the installed clips on the wall. It's recommended to have two people for this step. Simultaneously hang the mirror on the clips, ensuring a tight fit between them to support the mirror's weight.



Avoid using a single-layer backing board as it may not provide sufficient support, increasing the risk of the mirror falling.


Step 5

After hanging the mirror, thoroughly inspect all clips to ensure they are securely fastened. Gently test the mirror by applying slight pressure to check for any looseness. If any loosening occurs, promptly rehang the mirror following the installation instructions.





INYOUTH

 : www.inyouths.com

 : support@inyouths.com