

KT-FLED140PS-R2B-UNV-8CSB-VDIM

HIGH POWER FLOODLIGHT

DESCRIPTION

High Power Floodlight | Power Select | Color Select
| 120-277V | 80 CRI | Bronze Housing

APPLICATION

Ground, pole, or building mount applications (parking lots, auto dealerships, building facades, signs, recreational venues, general area lighting)



10 YEAR
LIMITED WARRANTY

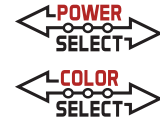


PRODUCT FEATURES

- High power flood light with innovative design based on established floodlight principles
- Suitable for ground, pole, or building mount applications
- Keystone Power Select technology (140/100W)
- Keystone Color Select technology (3000/4000/5000K)
- Heavy-duty slipfitter and trunnion mount options included
- 3-pin twist lock photocell and shorting cap included with NEMA/ANSI C136.10 3-pin twist lock receptacle
- Precision-crafted optics lens for NEMA 7H x 6V beam spread, 6H x 6V and 5H x 5V also available (sold separately)
- Die cast aluminum housing, with option glard shield accessory (sold separately)
- Keystone 0-10V dimming driver with 12V AUX power tap and 6kV surge protection
- Ambient operating temperature: -40°C/-40°F - 50°C/122°F
- UL and DLC 5.1 listed, IP65 rated
- Power factor: >.95
- THD: <20%
- L70 @ 100,000 hours @ 25°C/77°F ambient temperature
- Meets FCC Part 15, Part B, Class A standards for conducted and radiated emissions

PRODUCT SPECIFICATIONS

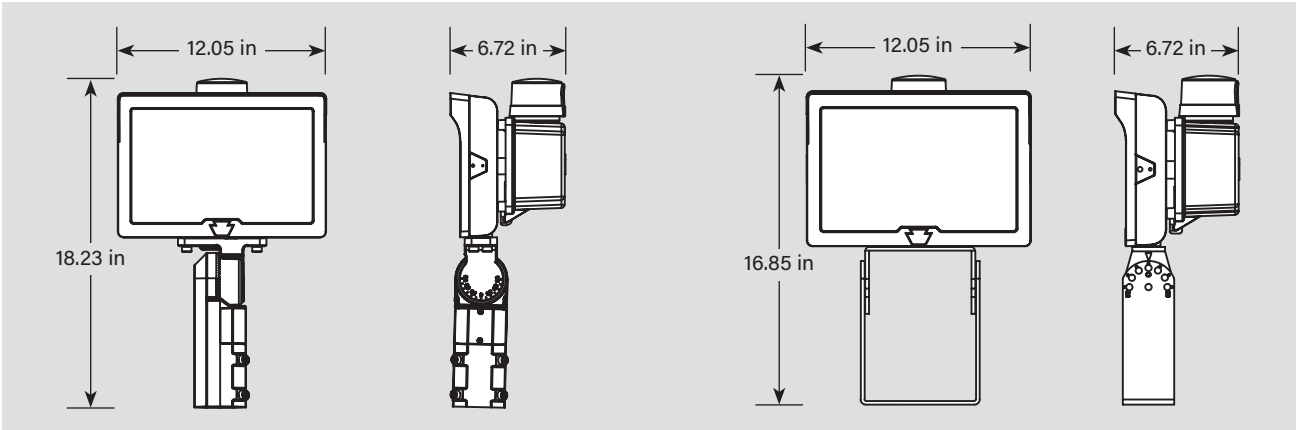
Catalog Number	Selectable Wattage	Selectable CCT	Lumen Output	Efficacy	Input Voltage	CRI	Dimming	Mounting	Dist Pattern	Photocell	Rated Life	Legacy Equivalent
KT-FLED140PS-R2B-UNV-8CSB-VDIM	140W	3000K	17500	125 lm/W	120 - 277V	>80	0-10V	Universal: 2 3/8" Slip Fitter or Trunnion	7H x 6V	Included	50,000 Hours	400W MH
		4000K	19600	140 lm/W								
		5000K	18900	135 lm/W								
	100W	3000K	13200	132 lm/W								
		4000K	14500	145 lm/W								
		5000K	14200	142 lm/W								



KT-FLED140PS-R2B-UNV-8CSB-VDIM

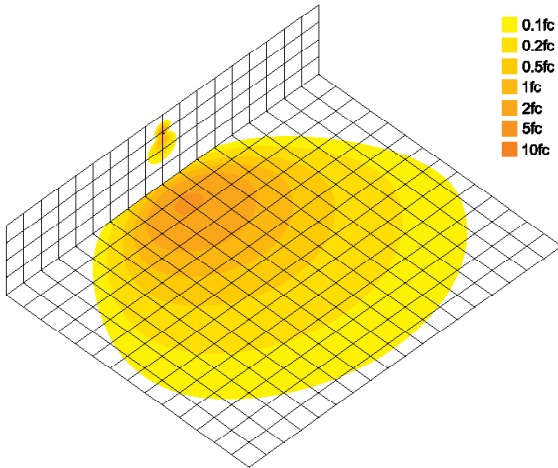
HIGH POWER FLOODLIGHT

PHYSICAL SPECIFICATIONS

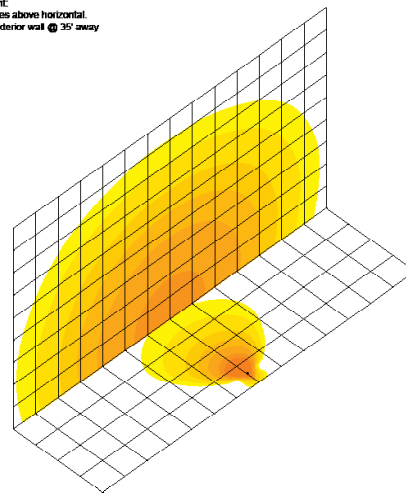


PHOTOMETRICS

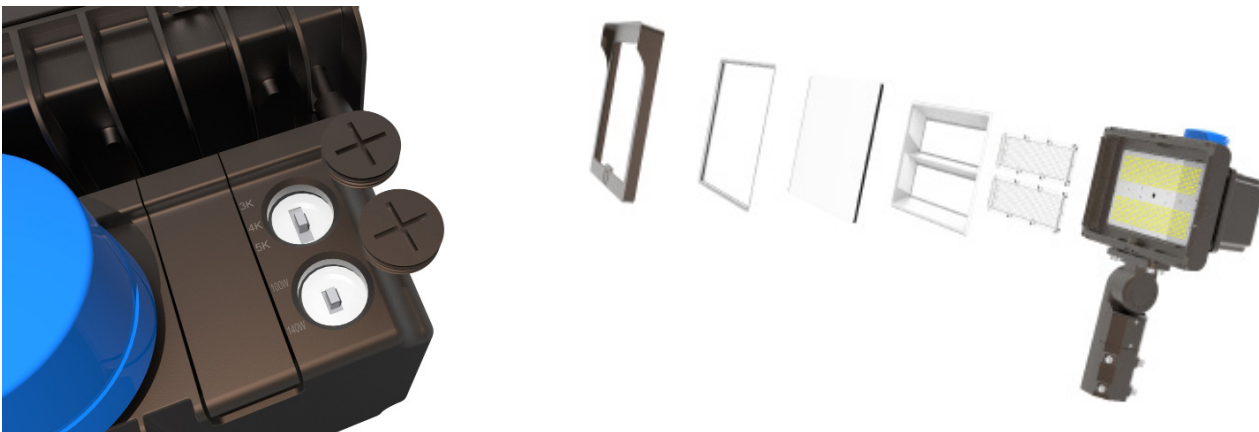
140W 5000K Building Mount: Building exterior mounted at 30°, 30 degrees below horizon

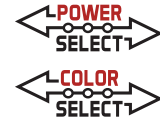


140W 5000K Ground Mount: 6' above ground, 10 degrees above horizontal. Shining towards building exterior wall @ 35' away



EXPLODED VIEW





KT-FLED140PS-R2B-UNV-8CSB-VDIM

HIGH POWER FLOODLIGHT

ORDERING INFORMATION

Catalog Number	UPC	Easy Code	DLC PRODUCT ID
KT-FLED140PS-R2B-UNV-8CSB-VDIM	843654138626	AME-92	PT0MP5M5
KT-FLED140PS-R2B-UNV-8CSB-VDIM /TAA	843654158693	XDX-75	

ACCESSORIES (SOLD SEPARATELY)

Catalog Number	Description
KT-FLED-GS-R2-1-KIT	Glare shield for 140W Fixture

CATALOG NUMBER BREAKDOWN

KT-FLED140PS-R2B-UNV-8CSB-VDIM

1	2	3	4	5	6	7	8	9	10	11	12	13
---	---	---	---	---	---	---	---	---	----	----	----	----

- 1 Keystone Technologies
- 2 Floodlight LED
- 3 Max Wattage
- 4 Power Select
- 5 Shape
- 6 Style
- 7 Distribution
- 8 Mounting
- 9 80 CRI
- 10 Color Select
- 11 Color Select Designation
- 12 0-10V Dimming
- 13 TAA Compliant

5 Shape

R	Rectangular
---	-------------

6 Style

2	Series 2
---	----------

7 Distribution

B	NEMA 7H x 6V Beam Spread
---	--------------------------

8 Mounting

UNV	Universal
-----	-----------

11 Color Select Designation

B	3000/4000/5000K
---	-----------------

13 TAA Compliant

/TAA	Made in Mexico
------	----------------