



KTEB-213-1-TP-SC-RJS

CFL ELECTRONIC FLUORESCENT



RoHS Compliant



PRODUCT FEATURES

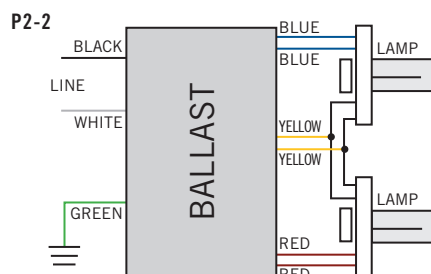
STARTING METHOD: Rapid	INPUT VOLTAGE: 120VAC ±10%	WARRANTY: 3 Years
LAMP CONNECTION: Parallel	INPUT FREQUENCY: 50/60 Hz	POWER FACTOR: Normal

- Sound Rated: A
- Minimum Starting Temperature: 0°F, -18°C
- Maximum Case Temperature: 194°F, 90°C
- Meets FCC Part 18 (Class B) Consumer Limits
- Transient Protection Meets ANSI/IEEE62.41 Cat. A
- Lamp end-of-life protected

ELECTRICAL SPECIFICATIONS

LAMP TYPE	NO. OF LAMPS	INPUT VOLTS	INPUT WATTS	INPUT CURRENT (AMPS)	POWER FACTOR	CREST FACTOR	BALLAST FACTOR	BALLAST EFFICACY FACTOR	MAX THD%	WIRING DIAGRAM
F13T5	2	120	23.0	0.37	0.52	1.60	0.95	4.06	150	P2-2
F13T5 + F8T5	2	120	19.0	0.31	0.51	1.53	0.90	4.74	150	P2-2
CFQ13W/G24q	2	120	22.0	0.34	0.55	1.50	0.95	4.32	150	P2-2
CFTR13W/GX24q	2	120	22.0	0.34	0.55	1.50	0.95	4.32	150	P2-2
F14T5	2	120	23.0	0.34	0.57	1.59	0.95	4.13	150	P2-2

WIRING DIAGRAMS

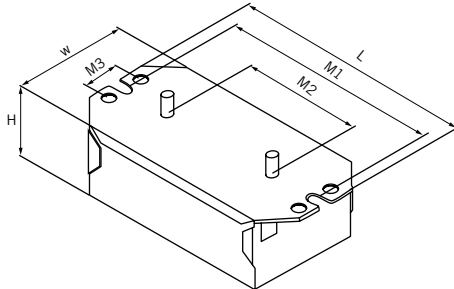




KTEB-213-1-TP-SC-RJS

CFL ELECTRONIC FLUORESCENT

CASE STYLE/DIMENSIONS



CASE DIMENSIONS

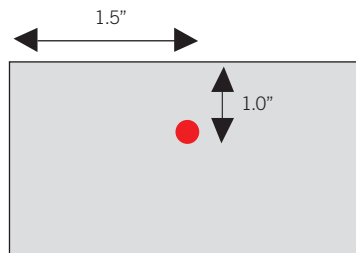
LENGTH: 4.00"
WIDTH: 1.87"
HEIGHT: 1.19"
MOUNTING (M1): 3.58"
MOUNTING (M2): 2.00"
MOUNTING (M3): 0.63"
UNIT WEIGHT: 0.59 lbs

STANDARD LEAD LENGTHS*

BLACK: 24.00"
WHITE: 24.00"
BLUE: 12.00" X 12.00"
RED: 12.00" X 12.00"
YELLOW: 12.00" X 12.00"

*Consult Keystone for special lead length requirements.

HOT SPOT LOCATION



ORDERING INFORMATION

ORDER CODE	PACKAGING STYLE	PACK QTY.	ITEM STATUS
KTEB-213-1-TP-SC-RJS		1	Special Order

CATALOG NUMBER BREAKDOWN

KTEB-213-1-TP-SC-RJS

Keystone Technologies Electronic Ballast |
 2 Lamps |
 13 Watts |
 120V Input |
 Thermally Protected |
 Short Case |
 Rear Junction Mount, with Studs