



# Green Electrical Supply

maximize your green<sup>®</sup>

[www.GreenElectricalSupply.com](http://www.GreenElectricalSupply.com)



Project: \_\_\_\_\_

Fixture Type: \_\_\_\_\_

Location: \_\_\_\_\_

Contact/Phone: \_\_\_\_\_

# 5" IC 600 LUMEN LED DOWNLIGHT REMODEL

IC20RLEDG3 RECESSED HOUSING

OPEN TRIMS



## PRODUCT DESCRIPTION

Dedicated LED, Air-Loc® remodel housing with integral light engine

- Shallow housing allows for fit in 2 x 6 construction
- IC remodel housing for remodel application where back side of ceiling is not accessible
- Installs through an opening in the ceiling from below
- Secured in place by factory installed remodel springs
- Can be completely covered with insulation
- When used with supplied ALG kit, stops infiltration and exfiltration of air, reducing heating and air cooling costs
- LED housing is designed to provide 50,000 hours of life and is compatible with many standard Juno trims
- 5 year limited warranty on LED components.

## ENVIRONMENTALLY FRIENDLY, ENERGY EFFICIENT

- No harmful ultraviolet or infrared wavelengths
- No lead or mercury
- Comparable light output to 65W BR30 incandescent while consuming less than 11W\*



## PRODUCT SPECIFICATIONS

**LED Light Engine** LED array integrated to one piece high purity aluminum, thermally conductive housing provides uninterrupted heat transfer to ensure long life of the LED

- Replaceable light engine mounts directly to housing and incorporates the latest generation, high lumen output LED array
- LEDs are binned to standards that exceed ENERGY STAR® requirements yielding superior fixture to fixture color uniformity
- 2700K, 3000K, 3500K, or 4100K color temperatures available
- 83 CRI typical.

**Optical System** Computer-optimized reflector design with high reflectance white finish coupled with a high transmission diffusing lens conceals the LEDs and produces uniform aperture luminance

- Deep regression of lens produces a low glare, efficient system that can produce over 600 lumens with select trims (see page 2 for details) using less than 11W\*
- Wide flood distribution shipped as standard with optional optic accessories available and sold separately.

**Aesthetic Trim Selections** Compatible with wide selection of existing Juno trims

- Shadow free, knife edge design blends seamlessly into ceiling.

**LED Driver** Choice of dedicated 120 volt driver or universal voltage driver that accommodates input voltages from 120-277 volts AC at 50/60Hz

- Power factor > 0.9 at 120V input
- 120 volt only driver is dimmable with the use of most incandescent, magnetic low voltage and electronic low voltage wall box dimmers
- Universal voltage driver is dimmable with the use of most 0-10V wall box dimmers
- For a list of compatible dimmers, see [JUNOLEDG3-6-DIM](#)
- Mounted between the j-box and housing for easy access and cool operation.

**Life** Rated for 50,000 hours at 70% lumen maintenance.

**Labels** ENERGY STAR® qualified to luminaires V1.1 requirements when used with select baffle and cone trims

- Certified to the high efficiency requirements of California T24-2008 with select trims
- UL listed for U.S. and Canada through-branch wiring, damp locations
- Union made
- UL and cUL.

**Testing** All reports are based on published industry procedures; field performance may differ from laboratory performance.

Product specifications subject to change without notice.

## HOUSING FEATURES

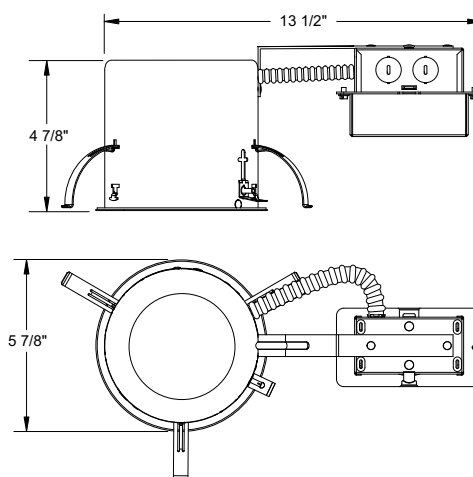
**Housing** Designed for use in IC (insulated ceiling) or non-IC construction

- Aluminum housing sealed for Air-Loc® compliance when used with ALG kit
- Remodel springs accommodate up to 1 1/2" ceiling thickness.

**Junction Box** Pre-wired junction box provided with (5) 1/2" knockouts, (4) knockouts for 12/2 or 14/2 NM cable and ground wire

- Knockouts equipped with pryout slots
- Quick connect electrical connectors supplied as standard for fast, secure installation.

## DIMENSIONS



5 1/2" CEILING CUTOUT

## ELECTRICAL DATA

### Dedicated 120V Only Driver Option

#### 120V

|                       |  |
|-----------------------|--|
| Input Power           | 10.5W (+/-5%)                                    |
| Input Current - Max   | 0.10A  |
| Frequency             | 50/60Hz  |
| EMI/RFI               | FCC Title 47 CFR, Part 15, Class B (residential) |
| Minimum starting temp | -20°C  |

## ELECTRICAL DATA

### Universal Voltage




|                       | 120V  | 277V  |
|-----------------------|---|---|
| Input Power           | 12W (+/-5%)                                     | 12.3W (+/-5%)                                   |
| Input Current - Max   | 0.11A   | 0.055A  |
| Frequency             | 50/60Hz   | 50/60Hz   |
| EMI/RFI               | FCC Title 47 CFR, Part 15, Class A (commercial) | FCC Title 47 CFR, Part 15, Class A (commercial) |
| Minimum starting temp | -40°C   | -40°C   |

\* Nominal input wattage @ 120-volt operation with dedicated 120V driver under stable operating conditions.

# 5" IC 600 LUMEN LED DOWNLIGHT REMODEL

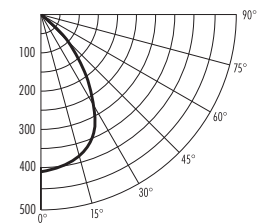
## IC20RLEDG3 RECESSED HOUSING OPEN TRIMS

**ORDERING INFORMATION:** Housing, trim and accessories each ordered separately.

| Example: IC20RLEDG3-3K-1          |                          |       | Example: 205W-WH  |   |   |                          |  |
|-----------------------------------|--------------------------|-------|---|---|---|--------------------------|--|
| Housing                           | Color Temperature        |       | Input Voltage   | Trim/Description  |   |                          |  |
| <div></div>                       | <div></div>              |       | <div></div>   | <div></div>   |   |                          |  |
| IC20RLEDG3                        | 27K                      | 2700K | 1   |  | 205W-WH   | White Baffle             | <sup>1</sup> Not ENERGY STAR rated<br><sup>2</sup> 120V only:<br>T24 @ 35K, 41K only<br><sup>3</sup> Universal Voltage:<br>not T24 certified<br><sup>4</sup> 120V only:<br>T24 @ 3K, 35K, 41K only |
|                                   | 3K                       | 3000K |   |   | 205B-WH <sup>1,2,3</sup>  | Black Baffle             |  |
|                                   | 35K                      | 3500K |   |   | 205B-SC <sup>1,2,3</sup>  | Black Baffle             |  |
|                                   | 41K                      | 4100K |   |   | 205B-ABZ <sup>1,2,3</sup>   | Black Baffle             |  |
|                                   |                          |       | U   | Universal Voltage, 120-277V (0-10V dimmable)                                      |  | 204C-WH                  | Cone in Clear Alzak®   |
|                                   |                          |       |   |   |  | 204G-WH                  | Cone in Gold Alzak®  |
|                                   |                          |       |   |   |   | 204B-WH <sup>1,3,4</sup> | Cone in Black Alzak®   |
|                                   |                          |       |   |   |   | 204PT-SC                 | Cone in Pewter Alzak®  |
|                                   |                          |       |   |   |   | 204W-WH                  | Cone in Gloss White  |
|                                   |                          |       |   |   |   | 204HZ-WH                 | Cone in Haze   |
|                                   |                          |       |   |   |   | 204WHZ-WH                | Cone in Wheat Haze   |
|                                   |                          |       |   |   |   | 204WHZ-ABZ               | Cone in Wheat Haze   |
| ACCESSORIES                       |                          |       | Trim Size: 6¼" O.D.<br>Trim Finish: ABZ - Classic Aged Bronze, SC - Satin Chrome, WH - White.<br>Alzak is a registered trademark of Alcoa Corp.<br>Note: In Canada when insulation is present, Type IC fixtures must be used. |   |   |                          |  |
| Catalog No.                       | Description              |       |   |   |   |                          |  |
| LEDOPTICG3-M                      | Medium Flood Optic (50°) |       |   |   |   |                          |  |
| LEDOPTICG3-N                      | Narrow Flood Optic (37°) |       |   |   |   |                          |  |
| LEDOPTICG3-S                      | Spot Optic (10°)         |       |   |   |   |                          |  |
| To order, specify catalog number. |                          |       |   |   |   |                          |  |

### PHOTOMETRIC REPORT

Test Report #: LTL25982  
Catalog No: IC20LEDG3-35K  
with 205W-WH Trim  
and standard wide flood optic  
Luminaire Spacing Criterion: 1.10  
Luminaire LPW: 60.3



### CANDLEPOWER DISTRIBUTION (Candelas)

| Degrees Vertical | 0°  |
|------------------|-----|
| 0                | 408 |
| 5                | 406 |
| 15               | 389 |
| 25               | 337 |
| 35               | 228 |
| 45               | 108 |
| 55               | 58  |
| 65               | 32  |
| 75               | 19  |
| 85               | 5   |
| 90               | 0   |

Multiplier: 27K - 0.90  
3K - 0.97  
41K - 1.04

### AVERAGE INITIAL FOOTCANDLES

Multiple Units (Square Array, 60'x60' room)  
Ceiling 80% Wall 50% Floor 20%

| Spacing | RCR1 | RCR3 | RCR5 |
|---------|------|------|------|
| 4.0'    | 44   | 37   | 31   |
| 5.0'    | 28   | 23   | 20   |
| 6.0'    | 19   | 16   | 14   |
| 7.0'    | 16   | 13   | 11   |
| 8.0'    | 12   | 10   | 9    |
| 9.0'    | 10   | 8    | 7    |
| 10.0'   | 7    | 6    | 5    |

### ZONAL LUMEN SUMMARY

| Zone  | Lumens | %Lamp | %Fixture |
|-------|--------|-------|----------|
| 0-30° | 302    | N/A   | 47.3     |
| 0-40° | 442    | N/A   | 69.5     |
| 0-60° | 580    | N/A   | 91.1     |
| 0-90° | 637    | N/A   | 100.0    |

### INITIAL FOOTCANDLES (One Unit, 10.6W, 73.4° Beam)

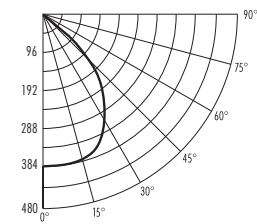
| Distance to Illuminated Plane (Feet) | Footcandles Beam Center | Beam Diameter |
|--------------------------------------|-------------------------|---------------|
| 4                                    | 25.5                    | 6.0'          |
| 6                                    | 11.3                    | 8.9'          |
| 8                                    | 6.4                     | 11.9'         |
| 10                                   | 4.1                     | 14.9'         |

### LUMINANCE (Average cd/m²)

| Degrees | Average Luminance |
|---------|-------------------|
| 45      | 15700             |
| 55      | 10350             |
| 65      | 7793              |
| 75      | 7525              |
| 85      | 5385              |

### PHOTOMETRIC REPORT

Test Report #: LTL25981R  
Catalog No: IC20LEDG3-35K  
with 204C-WH Trim  
and standard wide flood optic  
Luminaire Spacing Criterion: 1.26  
Luminaire LPW: 67



### CANDLEPOWER DISTRIBUTION (Candelas)

| Degrees Vertical | 0°  |
|------------------|-----|
| 0                | 382 |
| 5                | 380 |
| 15               | 366 |
| 25               | 345 |
| 35               | 283 |
| 45               | 153 |
| 55               | 79  |
| 65               | 38  |
| 75               | 7   |
| 85               | 0   |
| 90               | 0   |

Multiplier: 27K - 0.90  
3K - 0.97  
41K - 1.04

### AVERAGE INITIAL FOOTCANDLES

Multiple Units (Square Array, 60'x60' room)  
Ceiling 80% Wall 50% Floor 20%

| Spacing | RCR1 | RCR3 | RCR5 |
|---------|------|------|------|
| 4.0'    | 49   | 41   | 35   |
| 5.0'    | 31   | 26   | 22   |
| 6.0'    | 22   | 18   | 16   |
| 7.0'    | 18   | 15   | 13   |
| 8.0'    | 14   | 12   | 10   |
| 9.0'    | 11   | 9    | 8    |
| 10.0'   | 8    | 7    | 6    |

### ZONAL LUMEN SUMMARY

| Zone  | Lumens | %Lamp | %Fixture |
|-------|--------|-------|----------|
| 0-30° | 298    | N/A   | 42.0     |
| 0-40° | 472    | N/A   | 66.4     |
| 0-60° | 663    | N/A   | 93.3     |
| 0-90° | 711    | N/A   | 100.0    |

### INITIAL FOOTCANDLES (One Unit, 10.6W, 83.8° Beam)

| Distance to Illuminated Plane (Feet) | Footcandles Beam Center | Beam Diameter |
|--------------------------------------|-------------------------|---------------|
| 4                                    | 23.9                    | 7.2'          |
| 6                                    | 10.6                    | 10.8'         |
| 8                                    | 6.0                     | 14.4'         |
| 10                                   | 3.8                     | 17.9'         |

### LUMINANCE (Average cd/m²)

| Degrees | Average Luminance |
|---------|-------------------|
| 45      | 21114             |
| 55      | 13401             |
| 65      | 8704              |
| 75      | 2507              |
| 85      | 0                 |

Fixtures tested to IES recommended standard for solid state lighting per LM-79-08. Photometric performance on a single unit represents a baseline of performance for the fixture. Results may vary in the field.



1300 S. Wolf Road • Des Plaines, IL 60018 • Phone (847) 827-9880 • Fax (847) 827-2925  
220 Chrysler Drive • Brampton, Ontario • Canada L6S 6B6 • Phone (905) 792-7335 • Fax (905) 792-0064  
Visit us at [www.junolightinggroup.com](http://www.junolightinggroup.com)

Printed in U.S.A. ©2012 Juno Lighting, LLC.