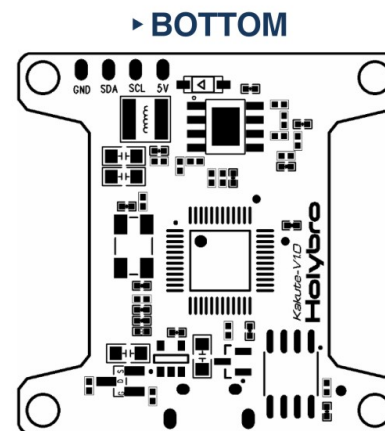
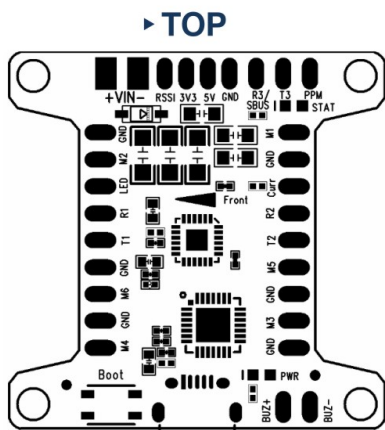




Board Layout

Pin	Function
VIN+	Battery+, Input Voltage 7-42v
VIN-	Battery-
RSSI	RSSI
3V3	3.3V Output 150mA
5V	5V Output 800mA
GND	Ground
R3/SBUS,T3	UART3 RX/SBUS or other serial connections, UART3 TX
PPM	PPM Input
M1	PWM Output (Motor 1)
GND	Ground
Curr	Current Sensor
R2,T2	UART2 RX, TX
M5	PWM Output (Motor 5)
GND	Ground
M3	PWM Output (Motor 3)
GND	Ground
BUZ-	Buzzer-
BUZ+	Buzzer+
M4	PWM Output (Motor 4)
GND	Ground
M6	PWM Output (Motor 6)
GND	Ground
R1,T1	UART1 RX,TX
LED	Digital LED Output
M2	PWM Output (Motor 2)
GND	Ground



Pin	Function
5V	5V output 800mA
SCL	I2C Bus
SDA	I2C Bus
GND	Ground

Features

- Recessed, sideways pin headers. Also enables soldering of all wires directly to pads without use of any pin headers.
- Dedicated Boot button for easy firmware flashing.
- Reinforced solder pads for trouble-free direct soldering.
- Extremely low profile design.
- Input voltage 7v to 42v. Power the board directly from flight pack up to 6S (on 'BAT' pad only!).
- VIN + VBAT merged - A single wire to power the board will provide voltage input and Telemetry/OSD voltage data.
- Filtered voltage output - output 5v 800mA (and 3.3v 150mA where applicable) to power peripherals such as GPS, RX, BLACKBOX, OSD. 5v/3.3v RX selectable.
- Cleanflight support (RACE target).
- BLHeli flashing supported by hardware
- Raceflight ready
- Betaflight ready



Specifications

- STM32F303CCT6(256kB flash) 32-bit processor
- MPU6050 Gyro/Accelerometer
- High quality, gold plated PCB
- Micro USB connector for programming
- Dimensions: 36x36x6mm (includes USB in height)
- Mounting Holes: 30.5mm square to center of holes
- Weight: 4.2g

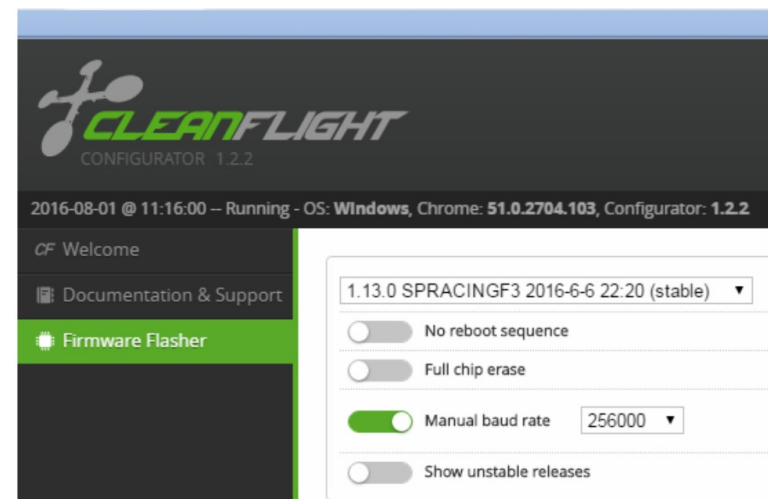
Package Includes

- 1x Kakute Flight Controller
- 1x 2.54mm Pitch pin headers
- Quick Start Guide

Software Installation/Setup

- Install latest Silicon Labs CP2102 USB to UART Bridge VCP Drivers
<http://www.silabs.com/products/mcu/pages/usbtouartbridgevcpdrivers.aspx>
- Install and launch the Cleanflight Configurator tool
<https://chrome.google.com/webstore/detail/cleanflight-configurator/enacoimjcgjeifnnpajinjgmkahmfgb>
- Connect Kakute to computer via USB cable.
- Select the correct COM port if it is not automatically detected.
- Click connect, verify that communication is established.
How to play:
<http://cleanflight.com/>
<http://www.rcgroups.com/forums/showthread.php?t=2249574>

Firmware Upgrade



- Click the Firmware Flasher tab."
- Select the latest SPRacingF3 stable release.
- Set the flashing baud rate to 256000.
- Click 'Load firmware [Online]' and wait for firmware to download and read release notes.
- Click 'Flash Firmware'.

Warranty & Return Policies

Technical staff of our after-sales service center will examine the returned product to identify the problem.

In the case of product failure due to defective material or manufacturer workmanship within the 60 days from the date of purchase, the product will be repaired or replaced (decided by the — manufacturer) with no charge to the customer, but the customer will pay for the returning shipping costs under all circumstances.

Returned items should include the original packaging and all the accessories.

Refund occurs only when the item is lost by the shipping company.

Maximum refund amount will not be more than the selling price, freight fee will not be returned.

After-sale service email: productservice@hollybro.com