

Sewer Pipe Inspection Camera User Manual



Model No: S8417D

Please contact us at the first time if you got issues with the product

Amazon After-sale: support@sanyipace.com

Website After-sale: service@sanyipace.com



- Scan this QR code to get the electronic version of the instruction in English.
- Scannen Sie diesen QR -Code, um die elektronische Version der Anweisung auf Deutsch abzurufen.
- Scannez ce code QR pour obtenir la version électronique de l'instruction en français.
- Escanee este código QR para obtener la versión electrónica de la instrucción en español.
- Scansiona questo codice QR per ottenere la versione elettronica delle istruzioni in italiano

Catalog

1. Notice	1
2. Scope of Product Uses	1
3. Specification	1
4. TFT Monitor Operation	2
5. Camera & Camera Protective Case	4
6. Device Charger	5
7. Device Install	5
8. Cable Operation	6
9. Accessories List	7
10. Trouble & Troubleshooting	7
11. Warranty	8

Attention: The illustrations and screenshots of this manual are to explain the product's operation, which may be a little different from actual products due to the products' version upgrades and different production batches. If the content in this manual does not match your machine, please refer to the machine!

1. Notice

- a. Please read the manual carefully before using the product.
- b. Handle the device with care when operating, do not drop or push hard.
- c. If the user disassembles or damages the machine intentionally, it will not be covered by the warranty.
- d. Please turn off the monitor and battery button, and disconnect all the connection joints after use.
- e. Before inserting the TF card into the device, please back up the information on the TF card to avoid loss of information.
- f. Do not cut off the power suddenly during recording and playback, otherwise, the product and video files may be damaged.

2. Scope of Product Uses

- a. Household pipeline blockage inspection
- b. Pipe inspection camera, pipeline tools
- c. Underground water pipes, HVAC systems, oil and gas pipelines
- d. Rescue operations in narrow spaces
- e. For underground exploration
- f. Scientific research on underwater riverbeds
- g. Sewer system inspection
- h. Any other hard-to-reach locations/areas

3. Specification

---Camera and Cable---

Sensor: 1/3 CMOS

Resolution: 1000TVL

Camera diameter: 0.67in/17mm

Viewable angle: 145 degrees

Camera material: stainless steel, IP68 waterproof

Camera light source: 8pcs White LED (adjustable)

Cable length: 33ft/10m, 66ft/20m, 100ft/30m, 164ft/50m (optional)

Cable diameter and material: 0.2in/5mm harder high elastic cable

---Monitor Screen---

Size: 4.3-inch

Camera/monitor picture: TFT color monitor

TF card: package includes 16GB card, support max 32GB

Menu language: English/Chinese/German/Spanish optional

Screen operation: press the button

Video format: AVI

Photo format: JPG

Working temperature: -4~140°F/-20~60°C

Storage temperature: -22~176°F/-30~80°C

---Battery Box---

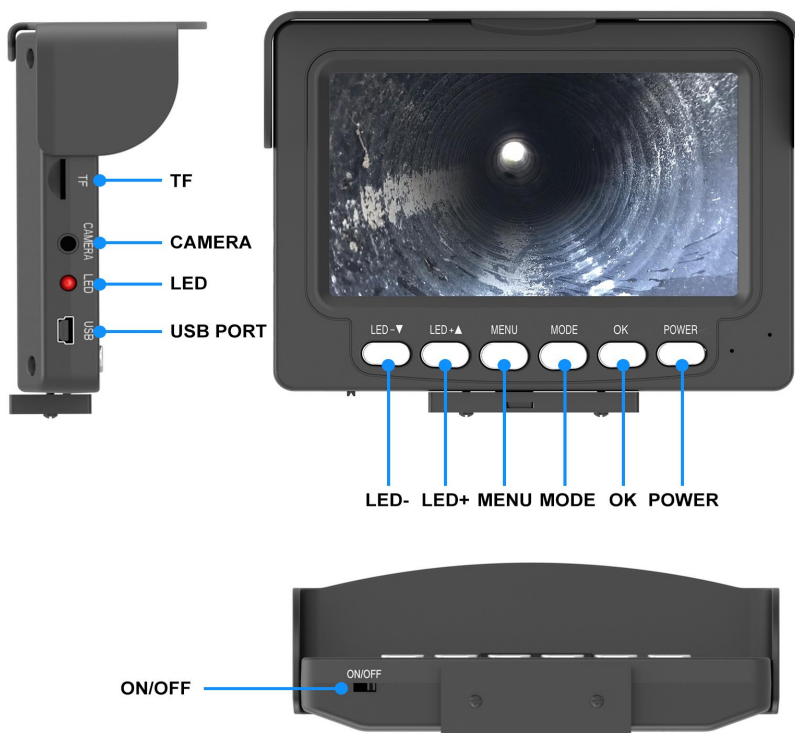
Charger: 100VAC-240VAC/DC 12.6V 1000MA

Charging time: about 5 hours

Battery: lithium battery 5600mAh

Battery continuous working time: about 5-7 hours

4. TFT Monitor Operation



---Display Operation---

- **TF:** Insert TF memory card.
- **USB:** Power adapter port.
- **LED:** Lights up to indicate the device is charging.
- **ON/OFF:** Slide to "ON", and the system starts, slide to "OFF", and shut down the system.
- **POWER:** Screen switch on/off.
- **LED+:** a) Turn up the brightness of the LED lights;
b) In system setting mode, press it to back to the previous selection.
- **LED-:** a) Reduce the brightness of LED lights;
b) In system setting mode, press it to flip to the next selection.

- **Menu Settings:**

Press the "MENU" button to enter the menu settings. Press "LED+" "LED-" to select, press "OK" to confirm, and press "MENU" to return.

- **Time Setting:**

Press the "MENU" button to enter the menu settings, find the Time Setting, select it, and press "OK". Then press "LED+" or "LED-" to select the time format, press the "OK" button to go set the YEAR value, press "LED+" and "LED-" to adjust the value, and press "OK" again to set the Month value. repeat the steps until the year, month, date, and time was set. Press "MENU" to exit.

- **How to Take Photos:**

Press "MODE" to select the photo mode (the camera icon will appear on the upper left of the screen) to take photos, and press the "OK" button to confirm the photo, one at a time.

- **How to Record Video:**

Press "MODE" to select the recording mode (the video recorder icon will appear on the upper left of the screen) to record, press "OK" to start recording, and press again to stop recording.

- **How to Delete Pictures or Videos:**

Press "MODE" to enter photo/video viewing, press "OK" to select one of the pictures or videos, press "MENU" to enter delete or all delete options, press "OK" to confirm, and press "MENU" again to exit.

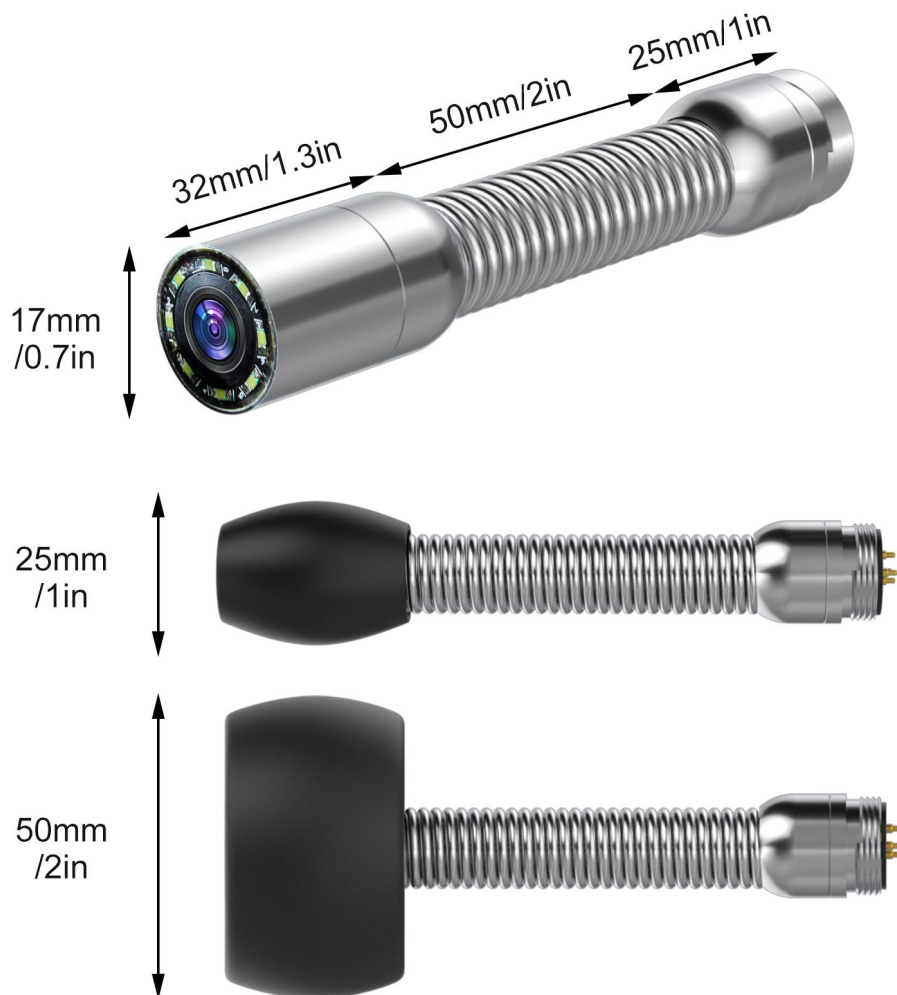
- How to view all photos and videos:

1) Press "MODE" to select the photos/videos you have taken, then press the "MENU" button to select the thumbnail, and you can see all the photos and videos.

2) Press "MODE" to select the photo/video you took, then press "LED+" or "LED-" to view the previous or next photo/video.

5. Camera & Camera Protective Case

Camera probe size details:



6. Device Charger

AC: 100-240V
OUTPUT: 12.6V-1000MA

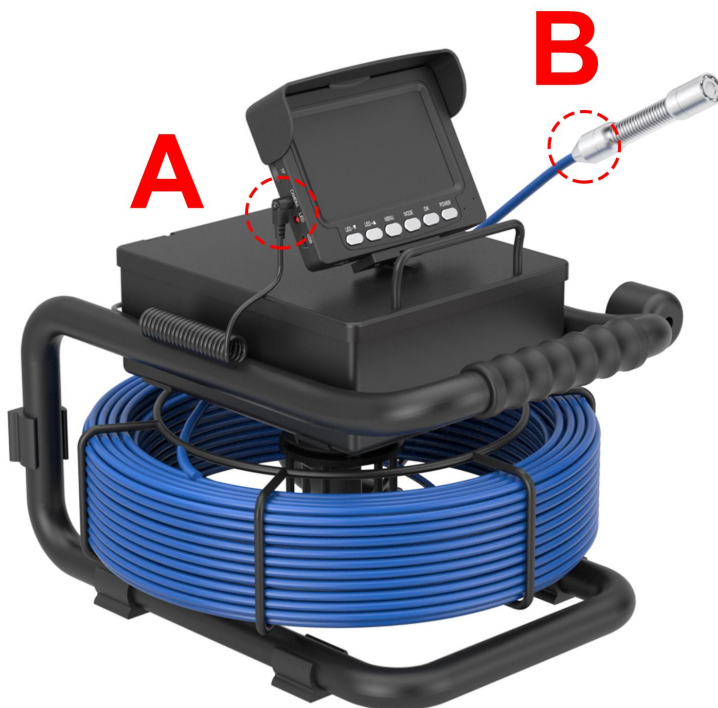
Indicator
Red -- on charging
Green -- full charged



When the battery is low power ($< 20\%$), please recharge it, the charging time is about **4-5 hours**. Working time is **5-7 hours** after full charging.

Note: To ensure the battery has a longer lifespan, please recharge it timely. otherwise, the battery may suffer damage or reduced lifespan.

7. Device Install



A) Connect the monitor to the cable coil.

NOTE: Make sure the connector is fully inserted into the connection hole!

B) Connect the camera probe to the cable coil in a clockwise direction.

The following are the steps to install the protective case:

- 1) use the mini screwdriver to loosen the white screw.
- 2) put the camera protective case on the camera head.
- 3) use the mini screwdriver to tighten the white screw.

The following are the steps to install the protective case



8. Cable Operation

Put the cable on the hook, pull to release, or push back to coil the cable.

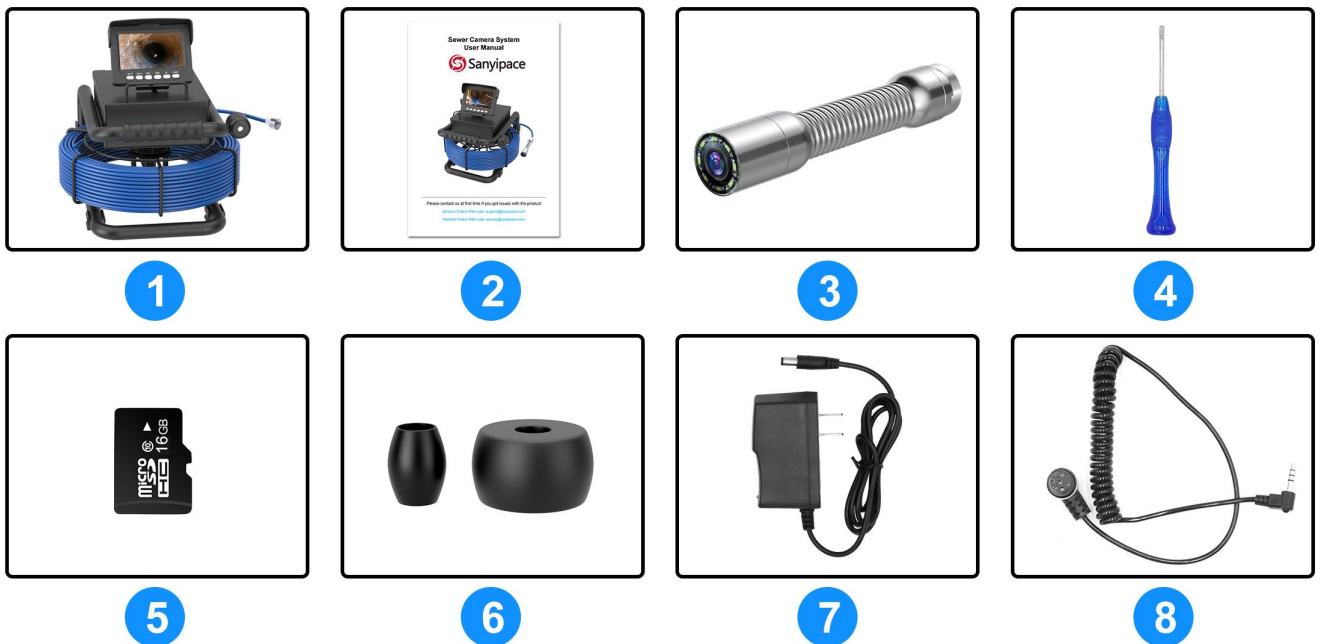


Coiled the cable



Release the cable

9. Accessories List



- ① Sewer Camera * 1 ② User Manual * 1 ③ Camera Probe * 1
 ④ Mini Screwdriver * 1 ⑤ 16GB TF Card * 1 ⑥ Camera Protective Cover * 2
 ⑦ Power Charger * 1 ⑧ Connection Cable * 1

10. Trouble & Troubleshooting

Trouble	Troubleshooting
No power	a. Check whether each interface is connected correctly; b. Check whether the battery is out of power, check the power display.
Can't be charged	a. check if the charger indicator light is on; b. Is the DC plug inserted well?
Can't record videos	a. Whether the TF card is inserted correctly; b. Insufficient TF card memory, format the TF card to try again; c. Check whether the power was off during the recording process.

Recording videos in black and white color	Adjust the LED light button to the appropriate brightness, observe the display, and select a brightness that is clearer and more colorful.
No signal, the screen turns blue	<ul style="list-style-type: none"> a. Turn off the power and turn it on to confirm the problem again; b. Check that connections are well connected and make sure all cables are properly connected; c. Adjust the camera probe and turn it slowly to confirm whether it is loose.
LED lights not working	<ul style="list-style-type: none"> a. Press the “LED+” button on the monitor to turn it on or adjust the brightness; b. Tighten or loosen the camera probe slowly to check if it works; c. The battery is going to out of power, recharge the battery and try again; d. Use a multimeter tester to test all connectors, find out the damaged part and contact Sanyipace to deal with it.

11. Warranty

We provide a one-year product quality warranty from the date of purchase and provide free lifetime product technical support. For normal faults or quality problems within the warranty period, we provide free replacement or repair services. For damage caused by manual operation, we will charge the cost of producing parts for repair. Our technical support team is at your service 24 hours a day. If you encounter any problems during use, please feel free to contact us.

----Contact Us----

For more products please visit our website:

<https://www.sanyipace.com>

Amazon After-sale: support@sanyipace.com

Website After-sale: service@sanyipace.com

Facebook: Sanyipace

WhatsApp: +86 137 1399 9105