

Pipe Inspection Camera System

User Manual



Model No: S810ASMKT

NOTE: Please unlock the cable coil lock before pulling the cable!

Please contact us at first time if you got issues with the product

Amazon After-sale: support@sanyipace.com

Website After-sale: service@sanyipace.com



- Scan this QR code to get the electronic version of the instruction in **English**.
- Scannen Sie diesen QR -Code, um die elektronische Version der Anweisung auf **Deutsch** abzurufen.
- Scannez ce code QR pour obtenir la version électronique de l'instruction en **Français**.
- Escanee este código QR para obtener la versión electrónica de la instrucción en **Español**.
- Scansiona questo codice QR per ottenere la versione elettronica delle istruzioni in **Italiano**

Catalog

1. Notice	1
2. Scope of Product Use	1
3. Product Specification	1
4. Monitor Buttons Operation	3
5. Cable Coil and Distance Counter	5
6. Control Panel & Keyboard Input	6
7. Camera with Self-leveling Function & 512Hz Transmitter	7
8. Battery & Charger	8
9. Device Installation	10
10. Structure & Accessories	11
11. Trouble & Troubleshooting	11
12. Warranty	12

Attention: The illustrations and screenshots of this manual are to explain the product's operation, which may be a little different from actual products due to the products' version upgrades and different production batches. If the content in this manual does not match your machine, please refer to the machine!

1. Notice

- a. Please read the manual carefully before using the product.
- b. Handle the device with care when operating, do not drop or push hard.
- c. Do not dismantle the machine without permission.
- d. Please turn off the monitor and disconnect the device after use.
- e. Before inserting the TF card into the device, please back up the information on the TF card to avoid loss of information.
- f. Do not cut off the power suddenly during recording and playback, otherwise, the product and video files may be damaged.

2. Scope of Product Use

- a. Household pipeline blockage inspection
- b. Pipe inspection camera, pipeline tools
- c. Underground water pipes, HVAC systems, oil and gas pipelines
- d. Rescue operations in narrow spaces
- e. For underground exploration
- f. Scientific research on underwater riverbeds
- g. Sewer system inspection
- h. Any other hard-to-reach locations/areas

3. Product Specification

---Camera and Cable---

Sensor: 1/3 CMOS

Resolution: AHD 1080P

Camera diameter: 0.9in/23mm (built-in 512Hz transmitter, self-leveling)

Camera light source: 12pcs 1W high white LED (adjustable)

Camera angle: 145 degrees

Camera material: stainless steel, sapphire lens, IP68 waterproof

Camera protective cover size: 1.5in*1.1in/38mm*28mm

Camera pipe pulley: 4.25in*1.8in/108mm*45mm

Cable diameter and material: 0.28in/7mm diameter Semi-rigid

Cable;164ft/50m, 230ft/70m and 328ft/100m of length optional

---Monitor Screen---

Size: 10.1-inch

Camera/monitor picture: IPS LCD color

Function: Video recording, Audio recording, Speaker, capture photos, 5X digital zoom, Battery voltage display, Distance counter, 512Hz transmitter, self-leveling, keyboard input (support English), etc.

Monitor input voltage: DC 12V

SD card: package includes 16GB card, support max 128GB

Display resolution: 1024*600 IPS

Menu Language: Chinese/English/Russian/French/German optional

Monitor operation method: press buttons

Video format: AVI

Photo format: JPG

Working temperature: -4~140°F /-20~60°C

Storage temperature: -22~176°F /-30~80°C

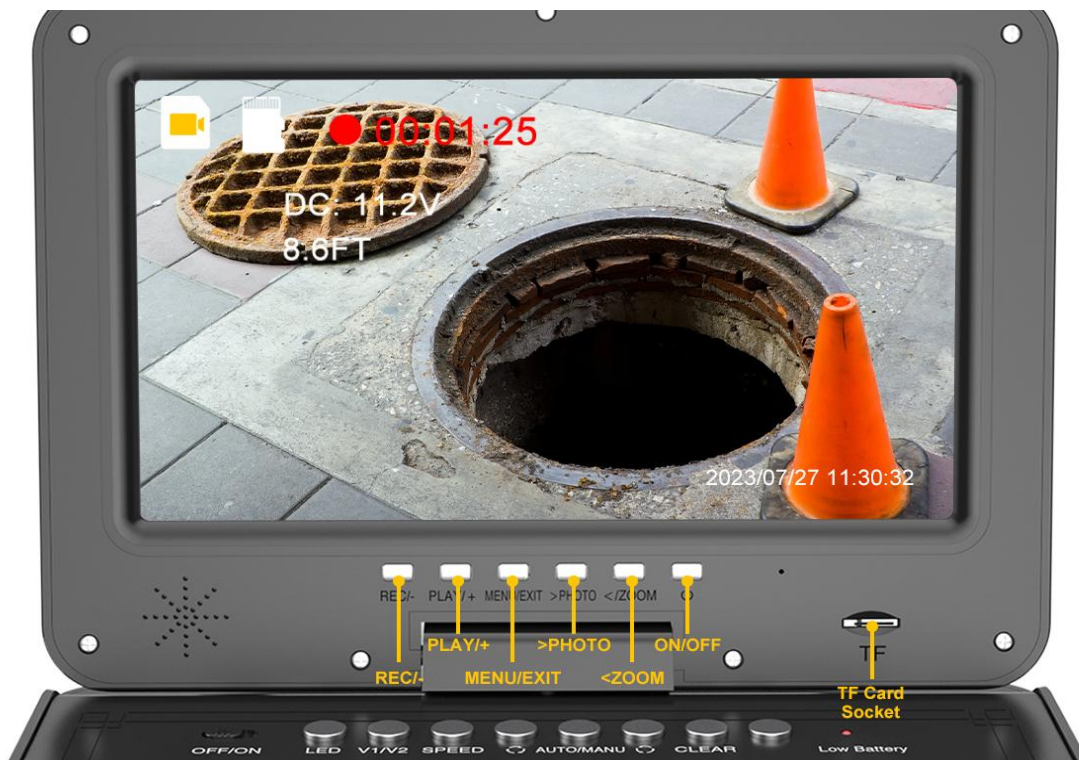
---Battery---

Charger: 100VAC-240VAC/DC 12.6V 1000MA

Battery: lithium battery 4500mAh

Battery continuous working time: about 6-8 hours

4. Monitor Buttons Operation



TF card: including 16GB, maximum support 128GB card

Built-in microphone and speaker

Display Operation :

- Turn On

Connect the camera head to the cable coil, connect the connection cable to the monitor and screw it, turn on the on/off switch on the control panel and press the power button on the monitor, and the system starts.

- Menu Settings (need to exit REC mode):

Press the "MENU/EXIT" key to enter the menu settings.

Press "<" ">" to select, press "Rec/-" to confirm, and press "EXIT" to return.

Allow operating time setting/playback setting/display setting/recording setting/system setting.

- How to Record Video:

Press "REC/-" to start recording (video with audio), press again to stop recording.

- How to Playback Images/Videos:

Press "PLAY/+" to enter image browsing, press it again to enter video playback, press "<" ">" button to select, press "REC/-" to play, press "REC/-" again to exit.

- How to Take Photos:

Press ">/PHOTO" to capture a photo, press one at a time.

- How to Zoom the Image While Recording:

Press "<" to zoom in 0-5 times, press the 6th time to return to normal (0).

- How to Delete Pictures or Videos:

Press "PLAY/+" to enter photo/video viewing, press ">" to select one of the pictures or videos, press "MENU/EXIT" and ">" to enter delete or all delete options, press "REC/-" to confirm, press "PLAY/+" again to exit.

- How to Modify Video Length:

The recorded video will be divided into fixed-length videos and stored in the memory card, and the default length is 3 minutes. You can adjust it up to 10 minutes. Press "MENU/EXIT" and ">/PHOTO" to select "Video Menu", press "REC/-" to change it to 1mins, 3mins, 5mins, or 10mins, and press "Menu" to exit after setting.

- How to Set Recording without Audio:

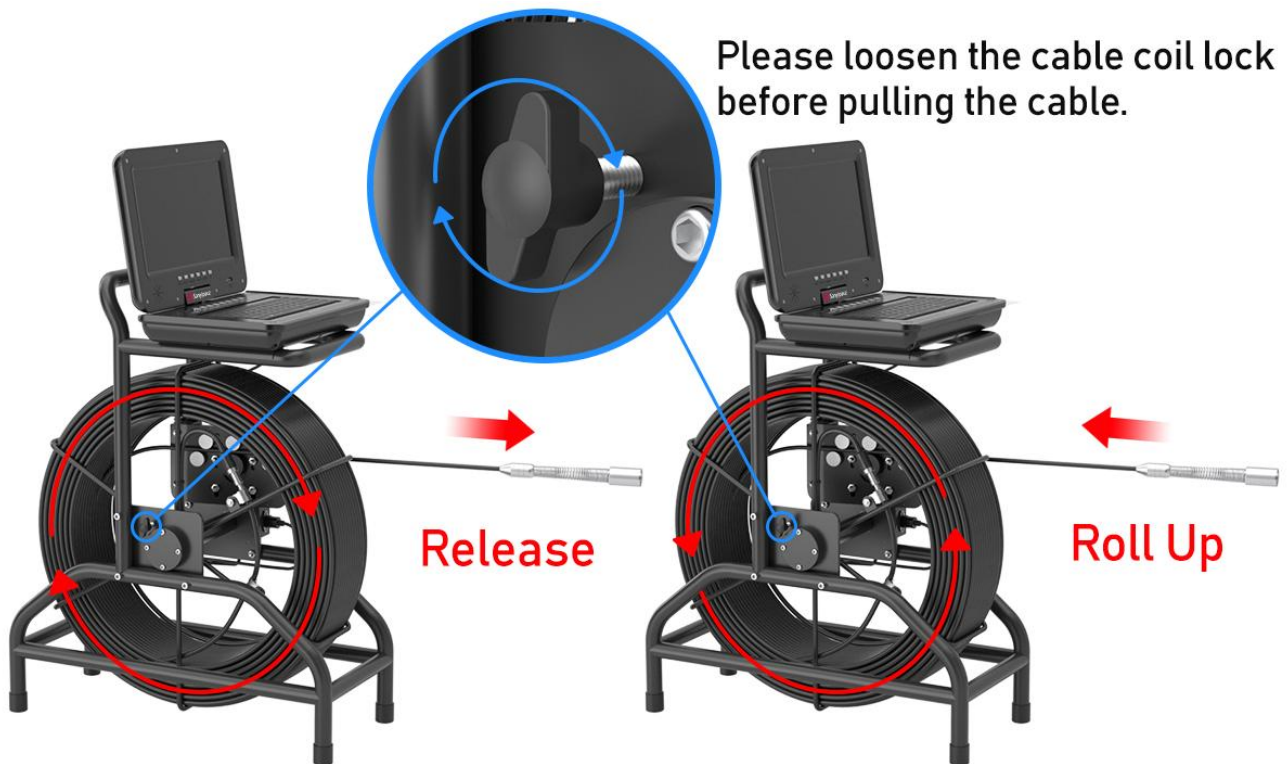
Press "MENU/EXIT" and ">" to select "System Settings", press "REC/-" to enter sub-options, press ">" to find "Sound Settings", press "REC/-" to adjust turn on or off, press "MENU/EXIT" to quit.

- How to Uninstall the Rotatable Monitor:

Remove the 5 screws on the bottom of the monitor to uninstall the monitor



5. Cable Coil and Distance Counter



7mm/0.28inch semi-rigid cable was coiled in the cable reel (with 47cm/18.5inch diameter). it is easy to operate, just pull to release cable and push back to coil the cable. but **PLEASE LOOSEN THE SCREW ON THE CABLE COIL CENTRE BEFORE YOU PULL THE CABLE.**



Counter
Reset Button



F7 key:
Counter Cleared



F4 key:
Feet/Meter Switch

Before using this function, please press the CLEAR button or F7 key to clear the counter information. You can toggle the display in feet or meters by pressing the F4 key. It will start counting feet/meters when the coil rotates, and display it on the screen in real time.

6. Control Panel & Keyboard Input



- ① OFF/ON Switch: battery on/off switch (Note: please turn off the switch when not in use)
- ② LED brightness adjustment (0-5 gear)
- ③ Counter reset button/ meter and feet switch button
- ④ Low Battery Indicator: it flashes when low battery
- ⑤ Esc: Clear characters
- ⑥ ← : Delete character
- ⑦ F4 key: Meter/Feet switch
- ⑧ F5 key: OSD switch (on-screen display)
- ⑨ F6 key: LED brightness adjustment (0-5 gear)
- ⑩ F7 key: Clear counter

The function of the keyboard: During working, you can input text/symbols/numbers to mark events.

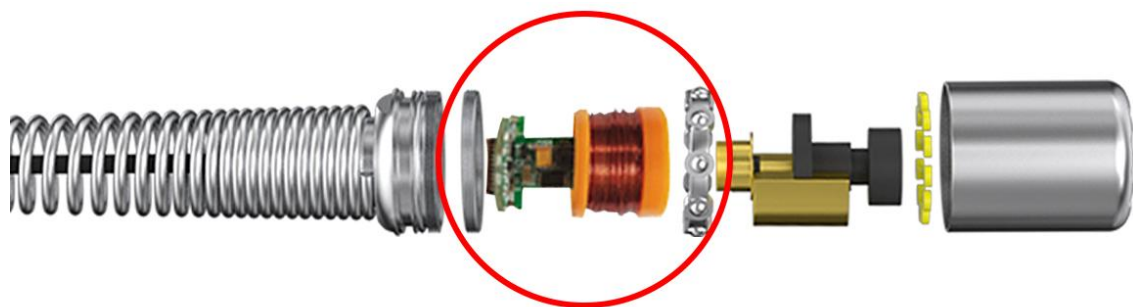
7. Camera with Self-leveling Function & 512Hz Transmitter

Camera probe size details:



The Camera probe has a built-in 512Hz transmitter, which transmits a 512Hz frequency signal through a built-in chip, compatible with any 512Hz pipe locator.

- Transmit Frequency: 512Hz**
- Output Waveform: sine wave**
- Transmit Distance: about 16.4ft/5m**



Self-leveling can be defined as the ability of any instrument to level itself regardless of the angle of inclination.

Camera probe is equipped with a self-leveling gravity bearing on the camera probe that could automatically adjust direction and level when taking videos/pictures to deliver upright pictures all time, helping users to position.

Our



Self Leveling

The image is always displayed correctly, without flipping

Other



No Self Leveling

The picture will flip as the camera flips



8. Battery & Charger

The battery is built into the control panel with a capacity of 4500mAh, and the screen displays the battery power status. **When the display shows that the power is lower than 9V or the “Low Battery” indicator light flashes, please recharge the device.**

AC: 100-240V
OUTPUT: 12.6V-1000MA
Indicator Light
Red Color - Charging
Green Color - Fully Charge



The steps of charging are as follows:

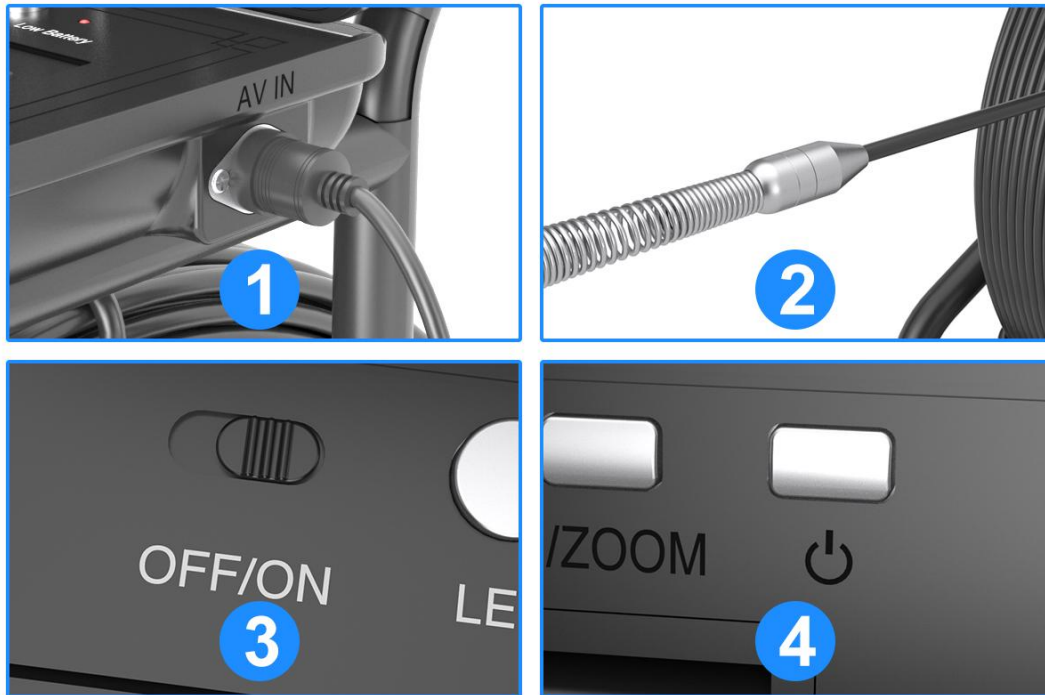
- Take out the DC adapter from the box.
- Connect the DC adapter port to the charging port (on the back of the monitor).
- Plug the DC adapter into 100-240V AC, when the indicator light is in red, it means it is charging.
- When the indicator light turns green, it means it is fully charged, the fully charging time is about 5-6 hours.

Note: To ensure a longer battery life, please charge it in time; otherwise, the battery may be damaged and cannot be recharged.



9. Device Installation

- a. Connect the video cable to the AV/IN port on the side of monitor box and tighten.
 - b. Connect the camera head to the cable coil end tighten.
 - c. Push the ON/OFF button on the control panel to turn on the battery, then press the power button on the monitor to turn on the screen.
- (As below pictures)



The following are the steps to install the pulley



1. find the mini screwdriver in the package



2. put the camera protective case on the camera head

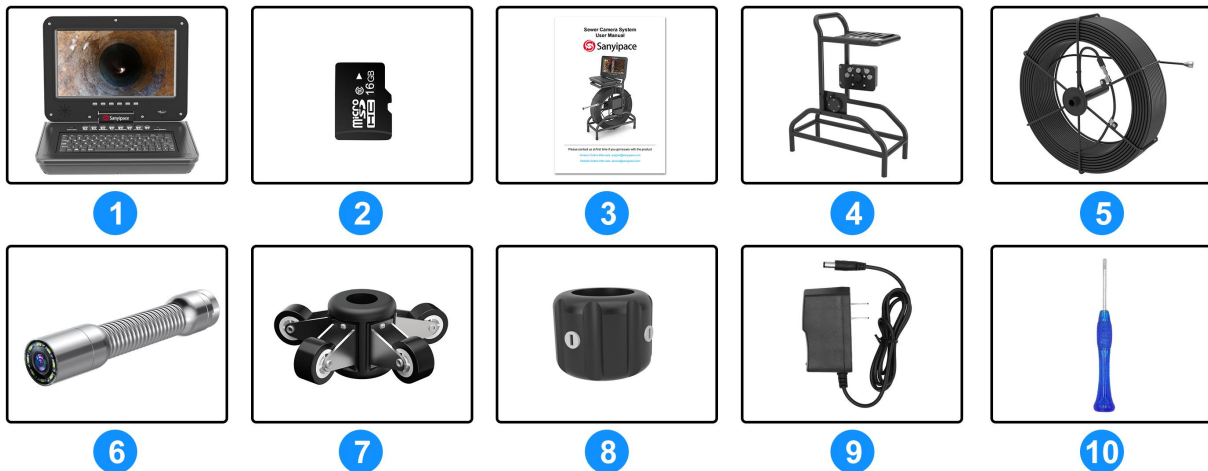


3. screw the 3 white screw on the protective case, until it was fixed on the camera head



10. Structure & Accessories

- ① Monitor and keyboard *1 ② 16GB SD Card*1 ③ User manual * 1
 ④ Metal Bracket * 1 ⑤ Fibreglass Cable coil * 1 ⑥ Camera head * 1
 ⑦ 4.5in/108mm Pipe Pulley*1 ⑧ 1.5in/38mm Protective Cover*1
 ⑨ DC Adapter*1 ⑩ Screwdriver*1



11. Trouble & Troubleshooting

Trouble	Troubleshooting
No power	a. Check whether each interface is connected correctly; b. Check whether the battery is out of power, check the power display.
Can't be charged	a. Is the DC adapter plug-in correctly; b. Check if the indicator light of the DC adapter is on.
Can't record videos	a. Whether the SD card is inserted correctly; b. Insufficient SD card memory; c. Check whether the power off during the recording process.
Recording videos in black and white color	Adjust the LED light button to the appropriate brightness, observe the screen display, and select a brightness that is clearer and more colorful.

<p>No signal, screen turns blue</p>	<p>a. Turn off the power and turn it on to confirm the problem again; b. Check that connections are well connected and make sure all cables are properly connected; c. Adjust the camera probe and turn it slowly to confirm whether it is loose.</p>
<p>LED lights not working</p>	<p>a. Check whether the LED lights setting is turned on, pressing the LED adjustment button on the panel or F6 to adjust the brightness; b. Tighten or loosen the camera probe slowly to check if it works; c. Use a voltage tester to test all connectors, find out the damaged part and contact Sanyipace to deal with it.</p>

12. Warranty

We provide a one-year product quality warranty from the date of purchase and provide free lifetime product technical support. For normal faults or quality problems within the warranty period, we provide free replacement or repair services. For damage caused by manual operation, we will charge the cost of product parts for repair. Our technical support team is at your service 24 hours a day. If you encounter any problems during use, please feel free to contact us.

----Contact Us----

Go to our website to download the user manual or view more products:

<https://www.sanyipace.com>

Website After-sale: service@sanyipace.com

Amazon After-sale: support@sanyipace.com

Facebook: Sanyipace

WhatsApp: +86 137 1399 9105