

# Pipe Sewer Pipeline Inspection Camera User Manual



Pipe Pulley



Protective Shell



Connection Cable



Power Charger



Screwdriver



**Model No.: 9723D**

---

Please contact us at first time if you got issues with the product

[SanyiMrchan@gmail.com](mailto:SanyiMrchan@gmail.com)

# Catalog

1. Notice .....	1
2. Scope of Product Use .....	1
3. Product Specification .....	1
4. Device Parts Details .....	2
(1) Screen Operation .....	2
(2) 4500mAh Battery .....	4
(3) Camera Probe (Waterproof Level IP68) .....	5
(4) Cable Coil .....	5
5. Accessories List .....	6
6. System Install (as below picture) .....	6
7. Power Charger .....	7
8. Failure and Diagnosis .....	7
9. Warranty .....	8

Attention: The illustrations and screenshots of this manual are to explain the product's operation, which may be a little different from actual products due to the products' version upgrades and different production batches. If the content in this manual does not match your machine, please refer to the machine!

# 1. Notice

- a. Please read the manual carefully before using the product.
- b. Handle the device with care when operating, do not drop or push hard.
- c. Do not dismantle the machine without permission.
- d. Please turn off the monitor and disconnect the device after use.
- e. Before inserting the TF card into the device, please back up the information on the TF card to avoid loss of information.
- f. Do not cut off the power suddenly during recording and playback, otherwise, the product and video files may be damaged.

# 2. Scope of Product Use

- a. Household pipeline blockage inspection
- b. Pipe inspection camera, pipeline tools
- c. Underground water pipes, HVAC systems, oil and gas pipelines
- d. Rescue operations in narrow spaces
- e. For underground exploration
- f. Scientific research on underwater riverbeds
- g. Sewer system inspection
- h. Any other hard-to-reach locations/areas

# 3. Product Specification

## ---Camera and Cable---

Sensor: 1/3 CMOS

Camera probe size: 0.87in\*1.7in/22mm\*42mm

Charger: 100VAC-240VAC DC 12.6V 1000MA

Battery: lithium battery 4500mAh

Battery continuous working time: about 6-8 hours

Max Inspection depth/material: 66ft/20m, 100ft/30m, 165ft/50m (optional)  
high tenacity cable

Camera line source: 12pcs 1W high white LED (adjustable)

Camera angle and clarity: 145-degree/1000TVL  
Camera shell material: stainless steel/IP68 waterproof  
Camera protective cover size: 1.5in\*1.1in/38mm\*28mm  
Camera protective cover material: plastic steel

### ---Monitor Screen---

Monitor Screen: 7-inch TFT color monitor  
SD card: includes 16GB SD card, max support 16GB  
Display resolution: 16:9, 960\*480  
Menu Language: Chinese/English optional  
Display video format: AVI, marked with Year,Month,Date,Time and Seconds  
Display operation: button  
Working temperature: -4~140°F /-20~60°C  
Storage temperature: -22~176°F /-30~80°C

## 4. Device Parts Details:

### (1) Screen Operation



### **a.Turn On**

Connect the connectors, turn on the battery switch, press the power button on the screen, and the system will start to work.

### **b.Setting**

Press MENU enter, after selecting Set, press “Play/+ ” or “Rec/- ” to confirm, Can set language/image/storage/clock .

### **c.Video Recording**

Press “Rec/- ” to start recording, press “Rec/- ” again to stop.

### **d.Video Browsing and Play**

Press “PLAY/+” to play a video, press “>” or “<” to play the next video, and press “Menu” to exit.

### **e.Take Photo**

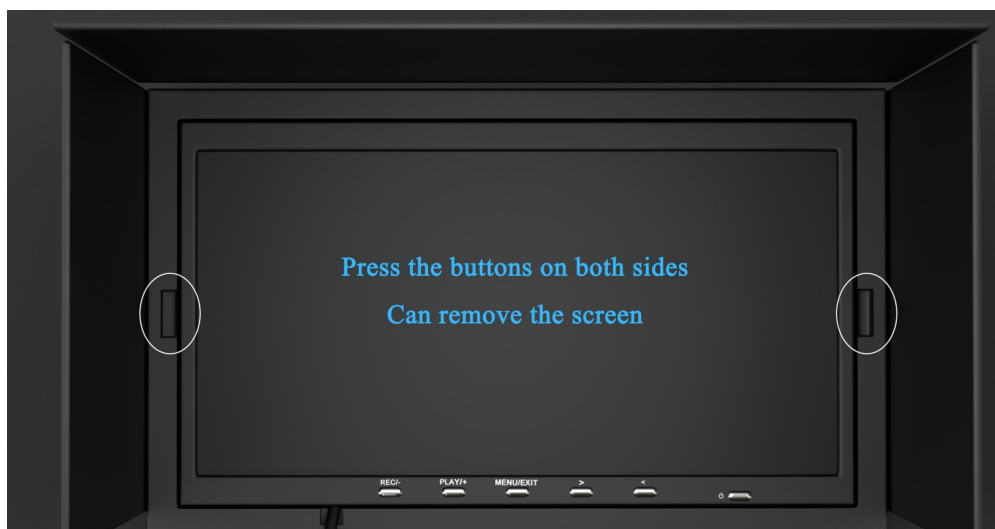
Press “>” to take a photo quickly, but it does not work in video recording mode.

### **f.Picture browsing**

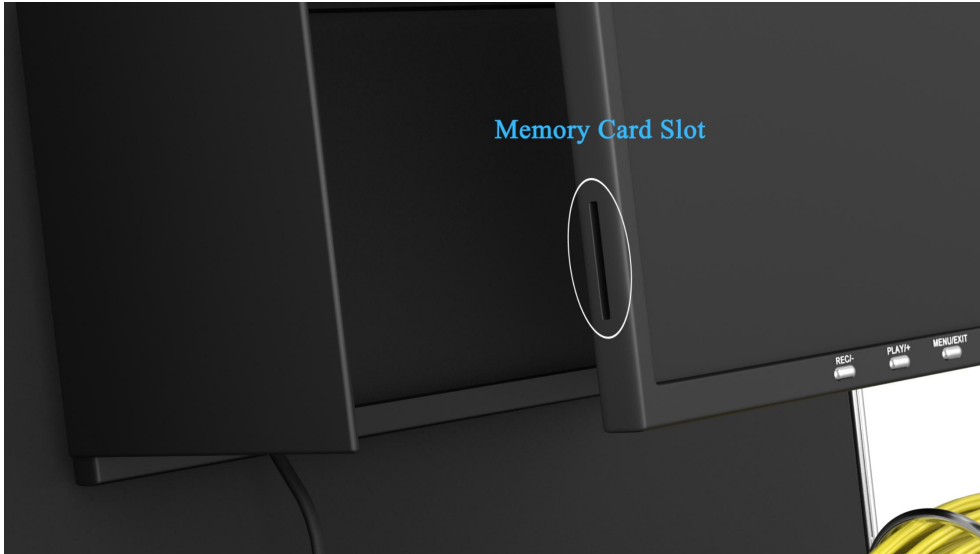
Press “<” to view pictures quickly.

### **How to take out the memory card?**

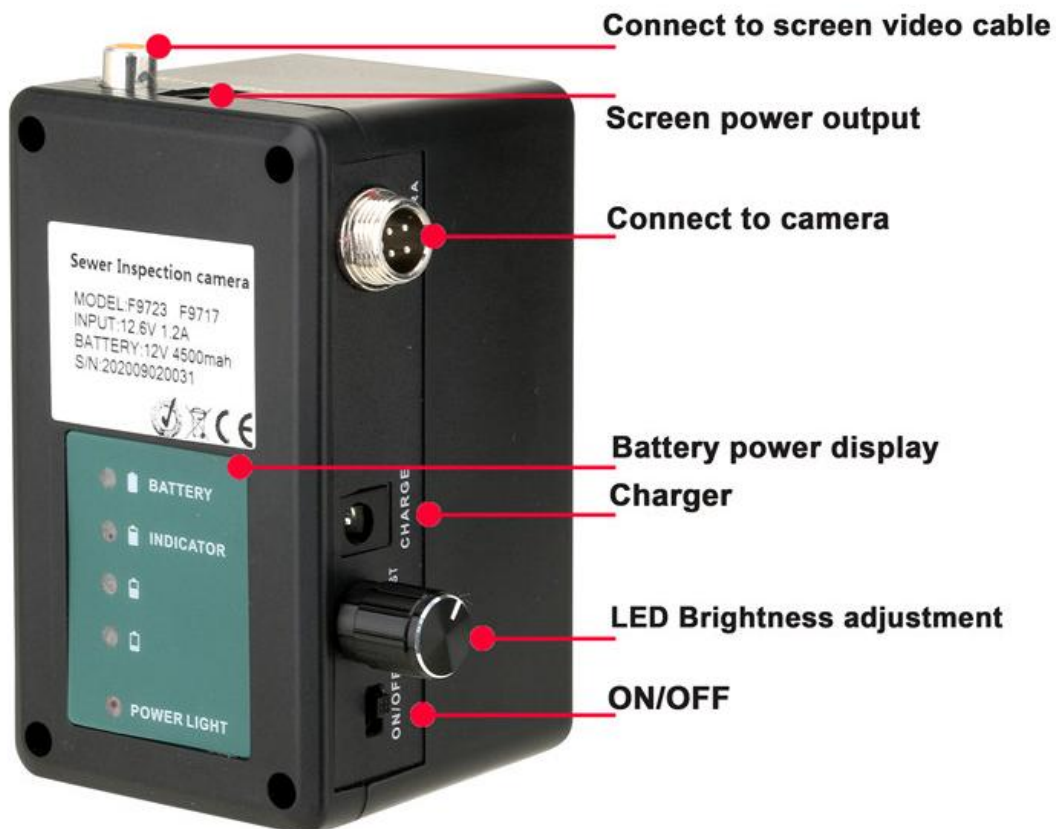
A. Press the buttons on both sides of the display at the same time to pop the display out.



B. There is an SD card slot on the left side of the screen, press it to pop out.



## (2) 4500mAh Battery



**It takes about 4-5 hours to be full.** The charging voltage is DC 12.6V, and the battery power is displayed on the battery.



### (3) Camera Probe (Waterproof Level IP68)



### (4) Cable Coil

Put the cable on the hook, pull to release, or push back to coil the cable.



## 5. Accessories List

- ① Aluminum Box \* 1      ② Power Charger \* 1      ③ Camera Probe \* 1  
④ Cable Coil \* 1      ⑤ Battery \* 1      ⑥ User Manual \* 1  
⑦ Camera Protective Cover \* 1      ⑧ Pipe Pulley \* 1      ⑨ 16GB SD card \* 1  
⑩ LCD Monitor \* 1      ⑪ Mini Screwdriver \* 1      ⑫ Connection Cable \* 1



## 6. System Install (as below picture)





## 7. Power Charger

AC: 100-240V  
 OUTPUT: 12.6V-1000MA  
 Indicator Light  
 Red Color - Charging  
 Green Color - Fully Charge



When the battery is low power (< 20% ), please recharge it, the charging time is about **4-5 hours**. Working time is 6-8 hours after full charging

**Note:** To make sure the battery has longer use age, please recharge it timely; otherwise, the battery may be damaged.

## 8. Failure and Diagnosis

Problems / faults	Solutions
No power	a. Check whether each interface is connected correctly; b. Check whether the battery is out of power, check the power display.
Can't record videos	a. Whether the SD card is inserted correctly; b. Insufficient SD card memory, format the SD card to try again; c. Check whether the power was off during the recording process.
Can not be charged	a. Is the DC adapter plug-in correctly; b. Check if the indicator light of the DC adapter is on.
Camera probe light up but screen shows "no signal"	a. Check whether the camera probe end is damaged or rust; b. Adjust the camera probe and turn it slowly to confirm whether it is loose; c. Check that connections are well connected and make sure all cables are properly connected; d. You can use a voltage tester pen to test the device parts one by one, find out the damaged part and contact us for replacement.

## 9. Warranty

We provide a one-year product quality warranty from the date of purchase and provide free lifetime product technical support. For normal faults or quality problems within the warranty period, we provide free replacement or repair services. For damage caused by manual operation, we will charge the cost of product parts for repair. Our technical support team is at your service 24 hours a day. If you encounter any problems during use, please feel free to contact us.

### ----Contact Us----

Go to our website to download the user manual or view more products:

<https://www.sanyipace.com>

Website After-sale: [service@sanyipace.com](mailto:service@sanyipace.com)

Amazon After-sale: [sanyimrchan@gmail.com](mailto:sanyimrchan@gmail.com)

Facebook: Sanyipace

WhatsApp: +86 137 1399 9105