



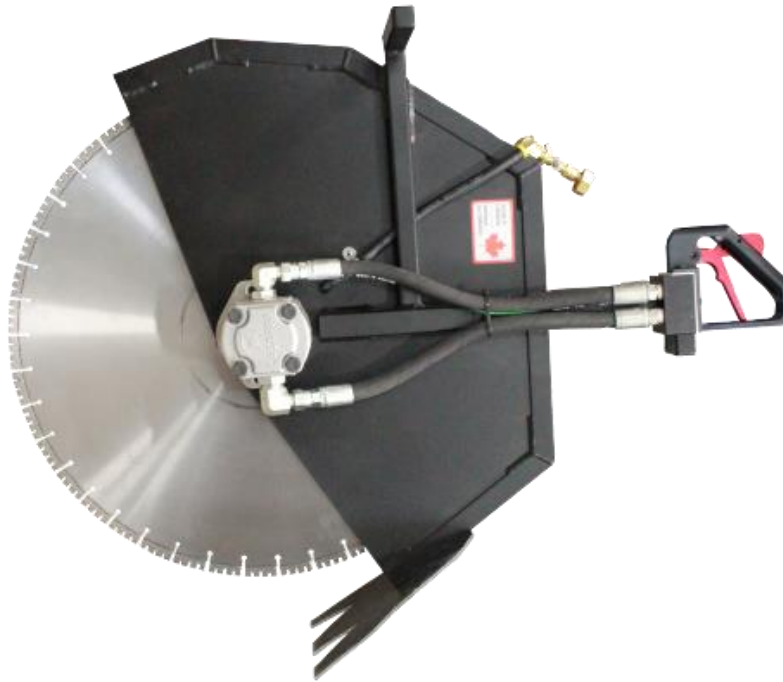
ACG SAWS
& TOOLS OF CANADA INC.

www.ACGSaws.com

**Safety and Operator Manuel
For HS24H10 AND HS20H10**

Original Instructions

August 2022



Congratulations!

You have decided to purchase a tried and tested state-of-the-art concrete hand saw from ACG Saws & Tools of Canada Inc. Only original ACG Saws & Tools replacement parts approved by the manufacture ACG Saws & Tools should be used, for guaranteed quality and interchangeability. If maintenance work is neglected or carried out inexpertly, we will be unable to honour our warranty. Any maintenance work, service and repair shall on be carried out by the manufacturer ACG Saws or authorised workshops.

In order to keep your ACG Saws & Tools in perfect condition, our after-sales services are always available and ready to help.

We hope your experience with the Hand saw will be satisfying and a trouble-free experience.

From the people who designed and make it,

ACG Saws & Tools of Canada Inc.

2590 Sheffield Road, Ottawa

Ontario K1B 3V7

Canada

+1 (613) 749-1525

+1 (877) 749-1525

Safety and Operation

WARNING! In order to safely work with our products, you have to follow all the safety recommendations from the manufacturer and all the competent safety organisations governing your territory and area.

It is mandatory and imperative that you read and comprehend the following instructions to prevent any injury or even death to the operator or any one else in your surrounding work area and property.

Only trained personnel or experienced operators shall use the cutting tool or saw. Any repairs must be done by a trained or knowledgeable mechanic.

DO NOT DISCARD the safety instructions; give them to the operator

Safety regulations and obligations vary from local, regional and countries. It is your responsibility to be informed and to follow all your local, regional, territory or country safety authorities' instructions and conform with all their safety recommendations and obligations.

The saw is designed to safely cut only concrete, masonry and stone.

Only a trained person who has read and understands the operating instruction, has experience with the use and operation of saws, the related usage of the tool and completely understands the instruction manual in conjunction with his experience and knowledge in the safe operation of saws should operate the saw.

General Safety Rules

- For multiple reasons, read and understand the safety instruction before installing, operating, repairing and maintaining the saws.
- Only qualified and trained operators should use the saws.
- Do not modify the saws. This can reduce effectiveness and safety of saws.
- Wear appropriate safety equipment.
- Tools shall be inspected periodically for damaged parts or missing labels. Only parts recommended by the manufacturer shall be used.
- Do not discard safety instruction; give them to the operator.

Workplace hazards

- Be careful in unfamiliar surrounding. There can be hidden hazards, such as electricity or other utility lines.
- Our saws are not intended for use in potentially explosive atmospheres and is not insulated against coming into contact with electric power.
- Practice looking for electrical cable, gas pipes, etc. before operating the saw.

Unfit to work

- Do not operate the tools if you have consumed prescription drugs that may affect your judgement or ability to safely operate the tool or illegal drugs and alcohol.
- Do not operate when overtired.
- Operator and maintenance personnel shall be physically able to handle the bulk, weight and power of the tool.

Repetitive Motion Hazards

- When operating adopt a comfortable posture and maintain secure footing to avoid discomfort during extended task.
- Don't push yourself and take breaks.

Recoil

- Only cut concrete, masonry and stone.
- Hold the saw correctly with both hands and proper footing.

Hydraulic Power Tools

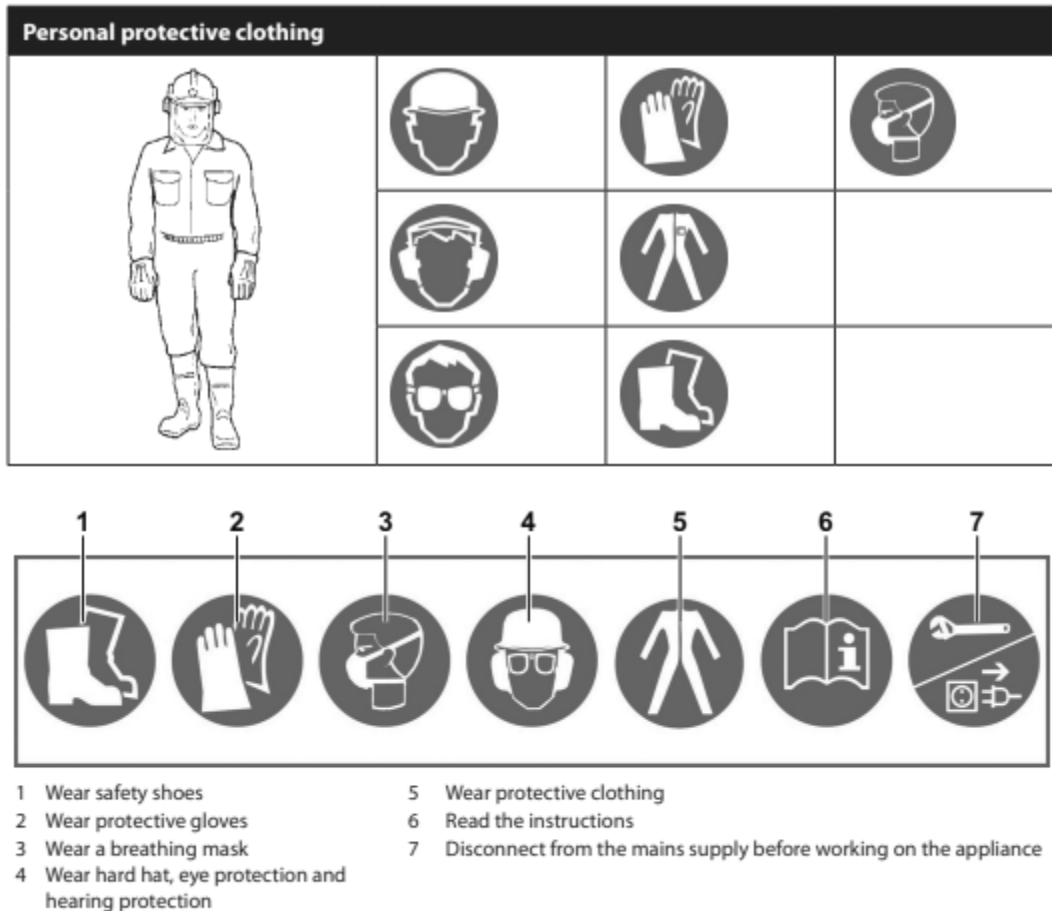
- Use only clean oil and filling equipment.
- Power units need to be inspected before every use and sited in a well-ventilated area.
- Ensure all couplings are clean and correctly engaged before operating.
- Ensure all hose connections are tight.
- Never connect or disconnect hoses while the drive unit is running.

Choking, Scalping and/or Lacerations

- Do not operate when wearing loose/hanging accessories and cloths.
- Wear appropriate protective clothing.
- If hair is long, wear a hairnet.

Vibrations

- Exposure to vibration can cause nerve and circulatory damage.
- If you experience symptoms seek medical help.



Projectile Hazards

- Always wear impact-resistant eye protection during operation.
- Guards shall be securely in place and in good functional condition.
- Damaged, bent or severely worn guards shall be replaced with manufacturer's standard guards.
- Ensure sparks, metal shavings and slurry are directed, so not to cause a hazard.
- Inspect blade and segment condition.

Noise Hazards

- Always wear hearing protection during operation.
- Exposure to high noise levels can cause permanent damage.

Sharp Edges

- Always wear protective gloves.
- Avoid contact with the saw blade to prevent cutting of hands.
- Cutting with these tools creates sharp edges.

Danger of Slipping

- Do not operate on uneven and slippery surfaces.
- Wear safety shoes with non-slip grip soles.
- Concrete slurry is slippery and should be removed.

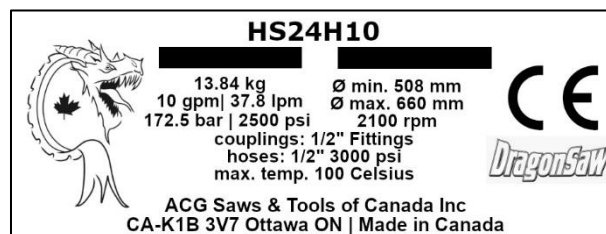
Dust and Vapours

- Wet cutting.
- When dust and fumes are created, priority is to control the point of emission.
- Use respiratory protection.
- In enclosed spaces, ensure that there is adequate ventilation.
- Warnings shall be given against the risk of explosion or fire due to the material being processed.

Transport

- Shipping and transport of the Dragon Ring Saw is done in a brown shipping box. Labelled with the Model of what's inside and its Serial Number. The box generally weighs 36 lbs and Diamond Ring Blades are transported separately weighing approximately 5 lbs.

Designation Plate



Quality Control

- ACG Saws & Tools make almost every part needed to assemble its equipment. We ensure to double check and measure tolerance of every part we manufacture. Then once we assemble, we thoroughly inspect and test the hydraulic system, gearing system and the complete functionality of the tool

Maintenance and troubleshooting

Maintenance and servicing							
		Before every use	After every use	Weekly	Annually	When faults occur	After damage
Hydraulic system	Check Hydraulic hoses, fittings and motor (Leaks, wear and tear)	X	X			X	X
Water Supply	Check water supply (Leak, wear and tear)	X	X			X	X
	Blow out water (Frost)		X				
Blade Guards	Check blade guard for damage or wear	X					
Saw body	Check aluminum body and make sure blade is not exposed	X	X				
Diamond Blade	Check Diamond ring blade for cracks and segment wear	X	X				
Major services are to be performed by the manufacturer ACG Saws & Tools or authorised workshops					X		

Faults		
Fault	Possible cause	Solution
Hand Saw does not start	Drive unit is switched off	Switch ON drive unit
	Emergency STOP on drive unit is pressed	Re-set emergency STOP
Blade not rotating or revolves slowly	Flange not properly set up and tight on blade	Make sure set screw is still holding on and left-hand nut is tight on blade
	Incorrect hose connection	Check the Hydraulic system
	Hydraulic motor fault	
	Oil delivery not connected properly	
	Main drive unit motor not engaged	Switch ON main motor
	Accumulation of heavy slurry	Clean guards and body from slurry
Ring blade disengages	Flange not properly set up	Check locking screw on flange
	Damaged blade	Change blade
Diamond segments broken off	Brazing or welding of segments not professional standard	Change blade
		Not enough water-cooling blade

Motor seal split	Ring saw running backwards	Check Hydraulic connections and drive unit oil circuit
	Pressure too high	Check settings on drive unit. If necessary, install and pressure reducing valve or a flow divider
	Defective seal	Replace seal
	Oil return incorrectly connected	Check connector
No water supply to ring saw	Water line blocked	Clean or change the water lines
	Water faucet on feed line is closed	Open the water faucet
	Insufficient water pressure	Check and increase water supply
Operating handle greasy	Hydraulic component seals faulty	Replace seals
Handle trigger sticking	Bent plunger or broken O-ring	Replace plunger kit

Technical Data

Dimension and weight	
Parameter	Value
Weight (without blade)	30.5 lbs or 13.84 kg
Width	229 mm or 9 inches
Height	724 mm or 28.5 inches
Length	712 mm or 28 inches
Drive unit	All drive units for hydraulic application possible

Hydraulics	
Parameter	Value
Operating pressure (max.)	172.5 bar or 2500 PSI
10 GPM Motor - Flow rate (max.)	37.8 l/min or 10 GPM
Flow rate (min.)	32.8 l/min

Cutting ring blade	
Diameter ring blade	Cutting depths
660 mm – 26 inches	280 mm – 11 inches
610 mm – 24 inches	254 mm – 10 inches
508 mm – 20 inches	203 mm – 8 inches
Cooling	Water cooling (No dry cutting)

Water supply	
Parameter	Value
Working pressure	min. 3 bar max. 6 bar
Flow rate	min. 5 l/min
Temperature	max. 25 C

Vibrations (EN ISO 3744)	
Parameter	Value
Vibration total value	<2.5 m/s

Noise emission (EN ISO 3744)	
Parameter	Value
Sound pressure level	85.6 dB(A)*
Maximum Value of sound pressure level	105.9 dB
Acoustic power level	105.6 dB(A)*

Warranty

Limited Tool and parts Warranty

ACG Saws & Tools of Canada Inc. the manufacturer certifies that the tool is free from any material or workmanship defects and warrants the tool with a limited warranty for a period of one year from the date of the original purchase. Workmanship charges may apply. Subject to certain exceptions, our responsibility under the warranty is limited to the inspection and replacement of any parts that may be defective after being shipped to our plant or any other point designated by the manufacturer.

Cost of transport, labour or other expenses are not covered by the warranty and are the responsibility of the buyer.

The warranty does not cover normal wear and tear, abuse, lack of maintenance, unauthorised repairs or attempt to repair by others than the manufacturer, misuse or the tool being used other than its intended application.

The add-on components or integral units such as electric-hydraulic motors, gas engines, transmissions, batteries, etc. are the responsibility of the prime manufacturer warranty and are excluded from this warranty.

This warranty replaces all other implied or expressed warranty and all other such warranties are therefore disclaimed.

Proof of purchase is mandatory. An authorization return number must be issued by the manufacturer before any tool may be shipped to us for repair or warranty. The manufacturer will repair the tool to its original designation at his discretion.



DragonSaw

2590 Sheffield Road, Ottawa, Ontario K1B 3V7

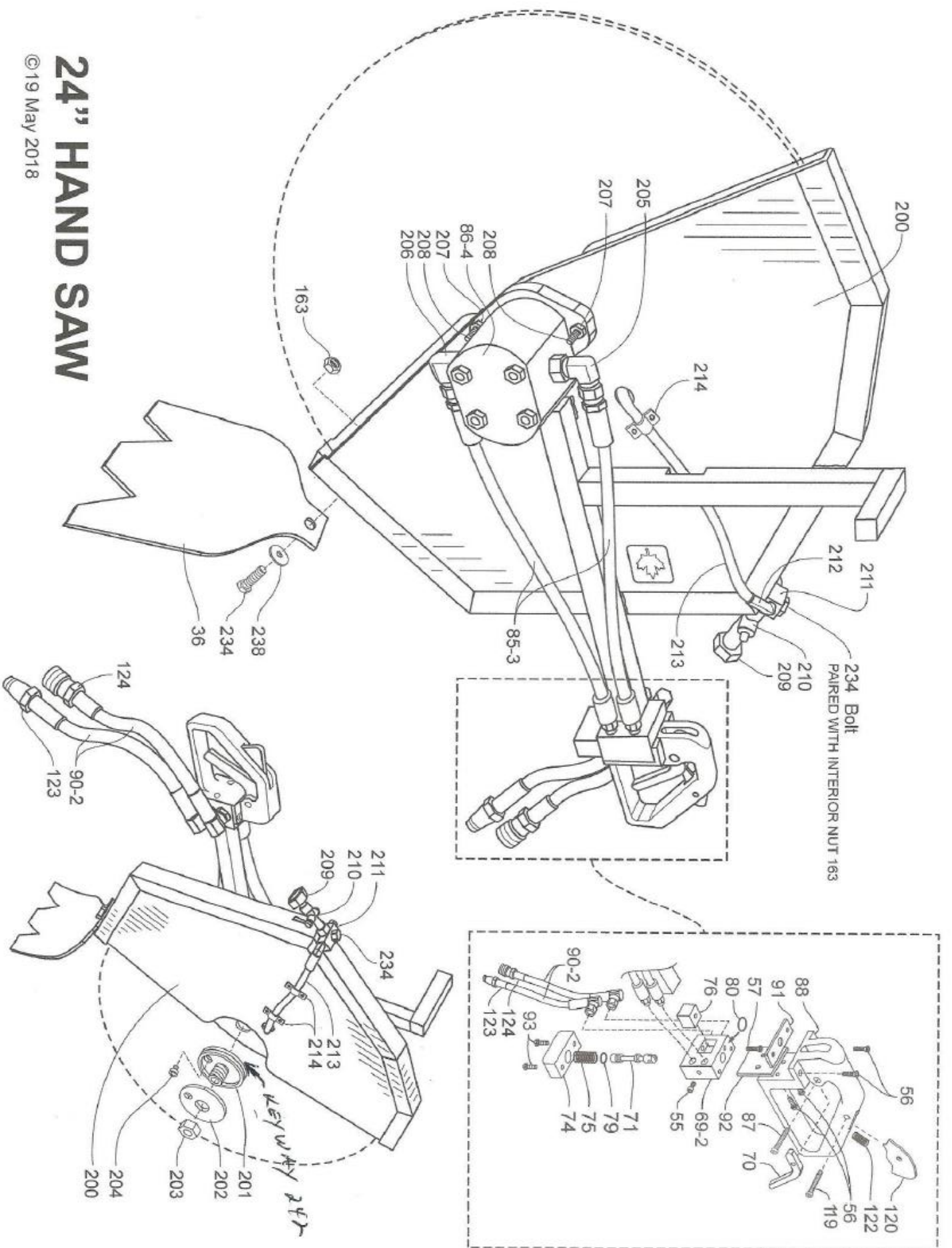
1 (613) 749-1525

1 (877) 749-1525

www.ACGSaw.com

24" HAND SAW

©19 May 2018



2022-02-25**ACG Saws & Tools of Canada Inc****HS24H10 - 24" Hand Saw**

Item #	Part #	Description	QTY
34	HDS034	Bolt	1
36	HDS036	Rubber Flop Guard	1
38	HDS038	Washer	1
55	HDS055	Flat Screw	1
56	HDS056	Flat Screw	4
57	HDS057	Cap Screw	1
69-2	HDS069-2	1/2" Hydraulic Valve Body	1
70	HDS070	Red Trigger	1
71	HDS071	Plunger	1
74	HDS074	Valve Cap	1
75	HDS075	Spring	1
76	HDS076	Stem Block	2
79	HDS079	Quad Seal #1	1
80	HDS080	Quad Seal #2	1
85-3	HDS085-3	1/2" Hose Assembly	2
86-4	HDS086-4	10 GPM Cassapa Motor	1
86-5	HDS086-5	Motor Seal	1
86-7	HDS086-7	Wiper Seal	1
87	HDS087	Handle Bolt	1
88	HDS088	Handle	1
90-2	HDS090-2	1/2" Hose Assembly	2
91	HDS091	Small Heat Insulator	1
92	HDS092	Large Heat Insulator	1
93	HDS093	Socket Cap Screw	2
119	HDS119	Spring Pin	1
120	HDS120	Trigger Lock	1
122	HDS122	Trigger Lock Spring	1
123	HDS123	Hydro Male Coupler	1
124	HDS124	Hydro Female Coupler	1
163	HDS163	Nut	1
200	HDS200	Guard & Handle Assembly	1
201-1	HDS201-1	Flanges & Nut Assembly	1
201	HDS201	Inner Flange	1
202	HDS202	Outer Flange	1
203	HDS203	LH Nut	1
204	HDS204	Hex Screw for Flange	1

205	HDS205	Small Motor Fitting	1
206	HDS206	Large Motor Fitting	1
207	HDS207	Nut	2
208	HDS208	Bolt	2
209	HDS209	Hose Adaptor	1
210	HDS210	1/4" Pet Cock Valve	1
211	HDS211	1/4" T	1
212	HDS212	1/4" Elbow	2
213	HDS213	1/4" Hose x 12"	2
214	HDS214	Clamp	3
240	HDS240	Flange Puller	1
241	HDS241	Wheel Adapter Kit	1
241-1	HDS241-1	Wheel & Bushing	1
242	HDS242	Key Way	1