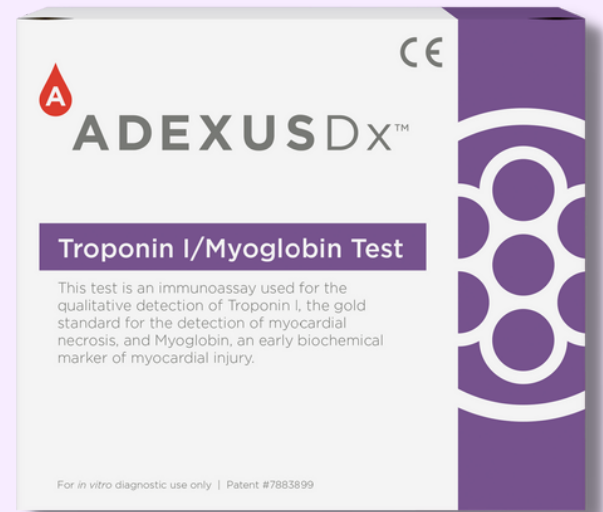


Troponin I/ Myoglobin

Rapid Blood Test

FEATURING

Touch-to-Test Technology



WHAT IS THE ADEXUSDx[®] Troponin I/ Myoglobin Test?

The ADEXUSDx[®] Troponin I/Myoglobin Test is an immunochromatographic assay used for the qualitative detection of human cardiac Troponin I and Myoglobin above established cut-offs in human whole blood, plasma, or serum samples. The combination of Myoglobin with the cardiac Troponin in a single test allows healthcare professionals to quickly detect muscle damage (Myoglobin) and more specifically cardiac muscle damage (Troponin I) showing clearly that a true myocardial infarction has occurred. Troponin I is the gold standard for the detection of myocardial necrosis and Myoglobin is an early biochemical marker of myocardial injury. Troponin I is expressed only in cardiac muscle, so it is a highly specific biomarker for myocardial injury. Troponin I usually elevates in serum about 4-6 hours after myocardial damage. The level of TnI peaks at about 24 hours and can remain elevated for 6-10 days. Myoglobin has rapid release kinetics. Elevated serum levels are often present within 2-3 hours post myocardial infarction (MI), peaks at approximately 5-9 hours, and returns to normal within 24- 36 hours. Since Myoglobin is present in both skeletal and cardiac muscle, any damage to these muscle types results in its release into blood. Therefore, serum Myoglobin levels can be elevated in conditions unrelated to MI such as myopathic disorders.

Simple & Accurate

Features & Benefits:

- Used capillary or venous whole blood, plasma or serum
- Store at room temperature
- Self-contained

Not Needed:

- External reagents
- Lab equipment or readers
- In demand ancillary items
- Refrigeration

Learn more at nowdx.com
phone 479.966.4560 | website nowdx.com

Administering the ADEXUSDx[®] Troponin I/Myoglobin Test*

FINGER STICK METHOD

1. Perform finger stick.



2. Touch the drop of blood to the tip of the test.



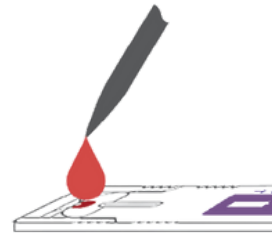
3. Set timer for 15 minutes and read result.



TRANSFER DEVICE METHOD

1. Collect 40 µl of sample using a liquid transfer device.

2. Apply sample to the test.



3. Set timer for 15 minutes and read result.



INTERPRETATION OF RESULTS

A band of any signal intensity appearing at the Test Position (T) is considered positive for TnI. A band of any signal intensity appearing at the Test Position (M) is considered positive for Myoglobin.



Troponin Positive Result



Myoglobin Positive Result



Double Positive Result



Double Negative Result



Invalid Result

* For complete instructions, refer to the Product Insert before administering the test.

Visit nowdx.com for more information.

Description

ADEXUSDx[®] Troponin I/Myoglobin Test, Box
ADEXUSDx[®] Troponin I/Myoglobin Test, Box

Quantity

25
50

Catalog Number

8009-25
8009-50



1200 Stewart Place | Springdale AR 72764
phone 479.966.4560 | website nowdx.com



MADE
IN THE
USA