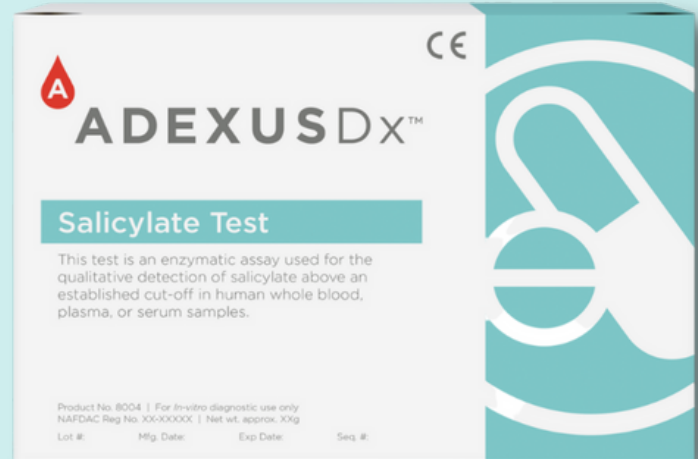


Salicylate

Rapid Blood Test

FEATURING
Touch-to-Test
Technology



WHAT IS THE ADEXUSDx[®] Salicylate Test?

The ADEXUSDx[®] Salicylate Test is an enzymatic assay used for the qualitative detection of salicylate above an established cut-off in human whole blood, plasma, or serum samples in the clinical laboratory setting as an aid for healthcare professionals in the diagnosis of salicylate overdose. Salicylate has a direct response to the nervous system of the brain and overdoses cause hyperventilation, resulting in elimination of CO₂ causing the blood to become alkaline. Aspirin (acetylsalicylic acid) is a common drug used in many formulations due to its analgesic and anti-inflammatory properties. Aspirin is quickly metabolized into salicylate after ingestion and is eliminated by conjugation with glycine and glucuronic acid.

Simple & Accurate

Features & Benefits:

- Used capillary or venous whole blood, plasma or serum
- Store at room temperature
- Self-contained

Not Needed:

- External reagents
- Lab equipment or readers
- In demand ancillary items
- Refrigeration

Learn more at nowdx.com
phone 479.966.4560 | website nowdx.com

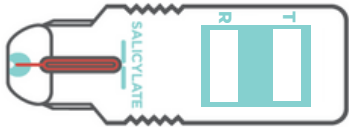
Administering the ADEXUSDx[®] Salicylate Test*

FINGER STICK METHOD

1. Perform finger stick.



2. Touch the drop of blood to the tip of the test.



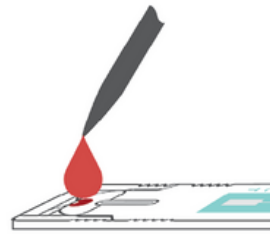
3. Set timer for 15 minutes and read result.



TRANSFER DEVICE METHOD

1. Collect 40 µl of sample using a liquid transfer device.

2. Apply sample to the test.



3. Set timer for 15 minutes and read result.



INTERPRETATION OF RESULTS

A brown color signal of any intensity appearing at the (T) position is considered the positive for Salicylate toxicity.

* For complete instructions, refer to the Product Insert before administering the test.



Positive Result
brown color at the test position (T)



Negative Result
no color at the test position (T)

Visit nowdx.com for more information.

Description

ADEXUSDx[®] Salicylate Test, Box
ADEXUSDx[®] Salicylate Test, Box

Quantity

25
50

Catalog Number

8004-25
8004-50



1200 Stewart Place | Springdale AR 72764
phone 479.966.4560 | website nowdx.com

