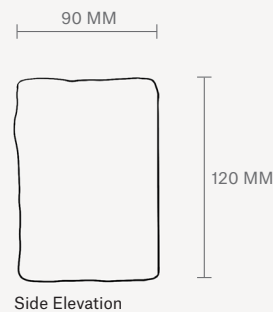
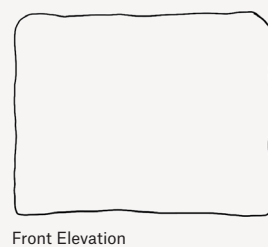
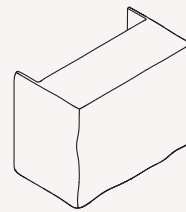
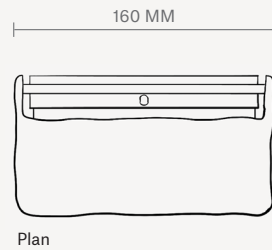


SCAPE

WALL LIGHT

SPECIFICATION SHEET



About Scape

Scape is evocative of the natural world and reminiscent of the landscapes we hold dear. Its undulating texture feels like a vast land mass viewed from high above, with each detail crafted to capture the emotional essence of time and the gradual evolution of terrain through the forces of nature. As light passes over the surface, the hand-sculpted details come to life, reflecting and enhancing the surrounding environment with a soft, warm glow.

Care Instructions

Over time, the metal surface may diminish its original luster. Make sure your hands are clean before touching the metal surface to avoid leaving any fingerprint marks. It is advised to use gloves when handling the lighting fixture. Do not use any abrasive substances on the product. Please be wary of its weight.

To retain the original aluminium and brass finish, use metal polish with a soft, dry cloth and gently rub it onto the surface. Please refrain from using any polish on the patinated bronze finish, as this may result in the removal of the patina.

Technical Details

Dimensions
W160 H120 D90 MM
W6.3 H4.7 D3.5 IN

Weight
1 kg - Aluminium
2 kg - Brass
2 kg - Bronze patina

Material
Cast aluminium



Cast Brass



Bronze patina



Finish
Tumbled and burnished

Hardware
W146 H55 D22 MM
W5.7 H2.1 D0.8 IN
Black paint finish

Light source
IND/ UK/ EU
G9 LED bulb (Included)
2.6W
220-240V
US/ JPN
G9 LED bulb (not included)
Suggested wattage - Max 5W
110-120V

Lumen
320lm

Kelvin Rating
2700K

Dimmable
On request

Cord
Hardwire

Classification
IP20