

**PATENT PENDING**

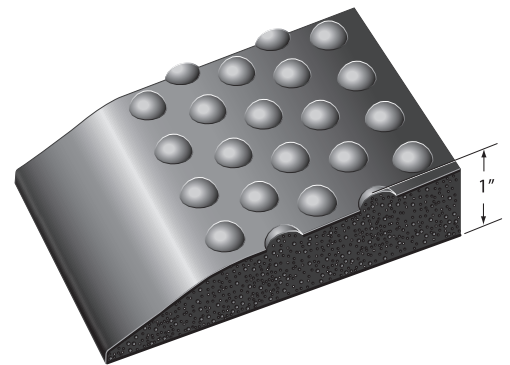
**Interactive®  
Anti-Fatigue Mat**

### GOOD ERGONOMICS, MAKES SENSE

- The Phat Footsie offers a perfectly balanced domed surface for underfoot contour, a faster adapting surface and delivers the premium ergonomics that can only be achieved with a Bi-Level surface.

### ERGONOMICS YOU NEED. RESULTS YOU WANT

- The Phat Footsie combination of premium polyurethane sponge with the “Rhino Low-Pro Dome” was developed exclusively for the rigors and clean-ability issues of the salon industry and provide the ultimate solution for reducing or eliminating short term fatigue and discomfort. When standing behind the chair, there are no substitutions in place for a world class anti-fatigue mat like Phat Footsie



### YOU STAND ON OUR REPUTATION

- The traditional 36” width of salon mats has always been a tad close behind the chair, leaving the stylist standing at the edge of the mat. Phat Footsie at 40” wide, provides the stylist room to spare. 1” thick and extra-large 40” X 60” size; color charcoal.

### COMMITTED TO SUPERIOR QUALITY AND RESULTS

- The Rhino commitment to the salon professional is a three-year guarantee



PHAT FOOTSIÉ Salon Mats			
Stock No.	Style	Size	Weight 1”
PF-2436	Shampoo	24” x 36”	7.0 lbs. ea.
PF-4060	Hexagon	40” x 60”	18.0 lbs. ea.
<b>Color:</b> Charcoal Only. 1” Thick.			

