



## DELIVERING MORE THAN COMFORT

- The raised coin pattern design is not only very attractive but also slip resistant, easy to clean and resistant to all hair-care products.

## RHINO SALON MATS TODAY. LASTING VALUE TOMORROW

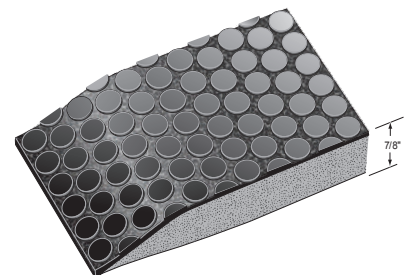
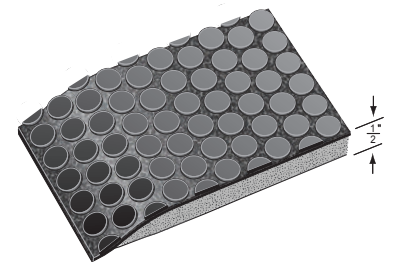
- Nickels-Worth Salon Mats are straight forward with the use of a carefully engineered closed-cell polymeric sponge base, providing the simplest and most effective way to reduce fatigue.

## TURNING COMFORT INTO VALUE

- Nickels Worth is available in two thicknesses, 1/2" and 7/8", (x) four (4) different sizes, (x) two (2) configurations, semi-Circle or Rectangle and your choice (x) of the standard circular cut-out or an optional square cut-out for chairs with a square base. Giving you 32 variations to choose from. Color; Black.

## PREMIUM ERGONOMICS

- The Rhino commitment to the Salon Professional is a 5 year guarantee.



### NICKELS WORTH SALON MATS

FOR 7/8" MATS, ADD "DS" TO STOCK NUMBER

Stock No.	Style	Size	Weight		List Price	
			1/2"	7/8"	1/2" Thick	7/8" Thick
NW-2436	Shampoo Mat	2'X3'	7.2 lbs	9 lbs	\$ 74.00	\$101.50
NW-3642R	Rectangle	3'X3.5'	19 lbs	20 lbs	\$131.00	\$184.40
NW-3642S	Semi-Circle	3'X3.5'	18 lbs	19 lbs	\$131.00	\$184.40
NW-3648R	Rectangle	3'X4'	21 lbs	23 lbs	\$148.20	\$208.60
NW-3848S	Semi-Circle	3'X4'	20 lbs	22 lbs	\$148.20	\$208.60
NW-3654R	Rectangle	3'X4.5'	23 lbs	20 lbs	\$165.00	\$232.30
NW-3654S	Semi-Circle	3'X4.5'	22 lbs	19 lbs	\$165.00	\$232.30
NW-3660R	Rectangle	3'X5'	25 lbs	28 lbs	\$181.50	\$255.50
NW-3660S	Semi-Circle	3'X5'	24 lbs	27 lbs	\$181.50	\$255.50

**CUSTOM SIZES - AVAILABLE IN LENGTHS UP TO 75 LIN. FT.**

Available 1/2" and 7/8" Thick/Double Sponge (DS)

