

blum



Compete Confidently™
2023-2024 Competitive Collection

2023 - 2024

Simply Elegant

When it comes to competing, looking your best and feeling your best go hand in hand.

An athlete shouldn't feel uncomfortable or insecure, and beautiful garments shouldn't come at an exorbitant price. Plum believes that every gymnastics team should have access to beautiful, affordable, and quality team wear. Since launching our Simply Elegant line in 2021, gymnasts across the country have enjoyed just that; comfortable, custom and reasonably-priced competition wear that stands out and holds up throughout their routine and beyond.

New for 2023 - 2024

3 New Styles with More Embellishment: Cassandra, Olivia, and Victoria

All three are available in long sleeve and tank options!

All Plum Simply Elegant Leotards are Manufactured in the USA!



CONTENTS

New Styles for 2023-24

Long Sleeved and Tank Leotards

| | |
|-----------------------------------|----|
| Cassandra (Tank Option Available) | 10 |
| Olivia (Tank Option Available) | 24 |
| Victoria (Tank Option Available) | 35 |

Styles

| | |
|------------------------------------|----|
| Adelle | 4 |
| Athena (Tank Option Available) | 7 |
| Brilliance (Tank Option Available) | 8 |
| Celeste (Tank Option Available) | 13 |
| Colette (Tank Option Available) | 14 |
| Delilah (Tank Option Available) | 17 |
| Dynamic | 19 |
| Lauren | 20 |
| Oceana | 23 |

| | |
|----------------------------------|----|
| Pinnacle (Tank Option Available) | 27 |
| Sea Star | 28 |
| Serena (Tank Option Available) | 31 |
| Sophia (Tank Option Available) | 32 |
| Storm | 35 |
| Whisper | 39 |

Teamwear Merchandise

40

How to Order

42

Fabric Options

44

Rhinestone Options

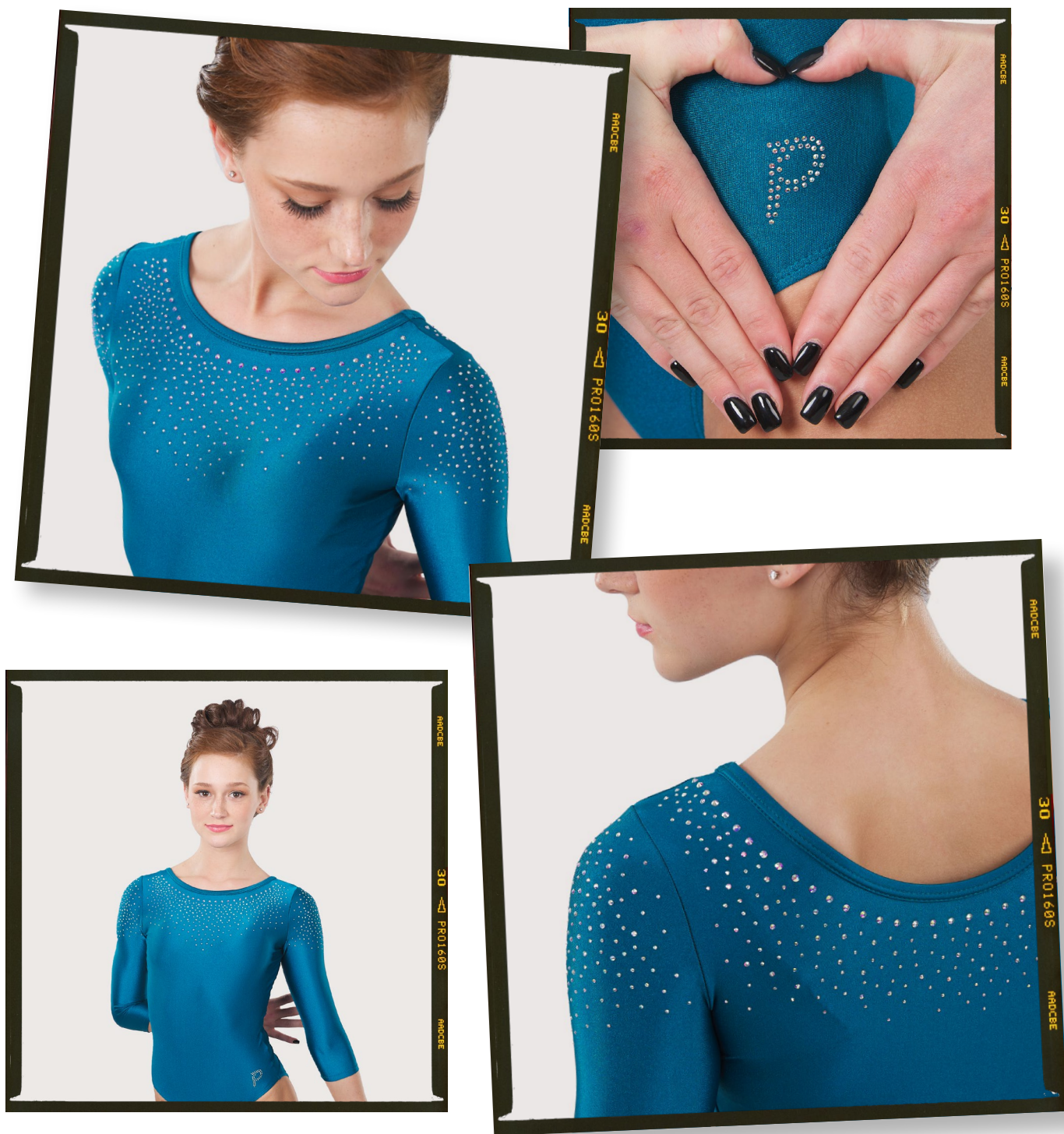
45

Our Story

46

Contact Sales for Pricing

47



ADELLE

This timeless leo is sure to complement any gymnast's style!

More isn't always better, and sometimes a delicate sprinkling of rhinestones is all a girl needs to succeed. For our simplicity-loving #PlumGirls we've designed this leo inspired by a calm night of staring at the stars.





TANK STYLE AVAILABLE

ATHENA

Know ALL of your strengths when you sport the Athena leo!

Many know Athena as the Goddess of War, but did you know she was also the Goddess of Wisdom? We crafted this leo to represent the strength she inspired inside and out and hope our #PlumGirls will feel that same confidence when they compete in this piece.



TANK STYLE AVAILABLE

BRILLIANCE

Compete confidently in our Brilliance leo!

This abstract design was made to stand out from the competition while still keeping it classy. Embellishments adorn the bodice of this leo in an intricate pattern fit for our #PlumGirls who love to shine!





TANK STYLE AVAILABLE

CASSANDRA

Be a Wonder on the Gym Floor in Cassandra!

This unique leotard was designed to make you feel strong, confident, and prepared to tackle any challenges that come your way. The dramatic design is sure to turn heads and make you stand out in any crowd



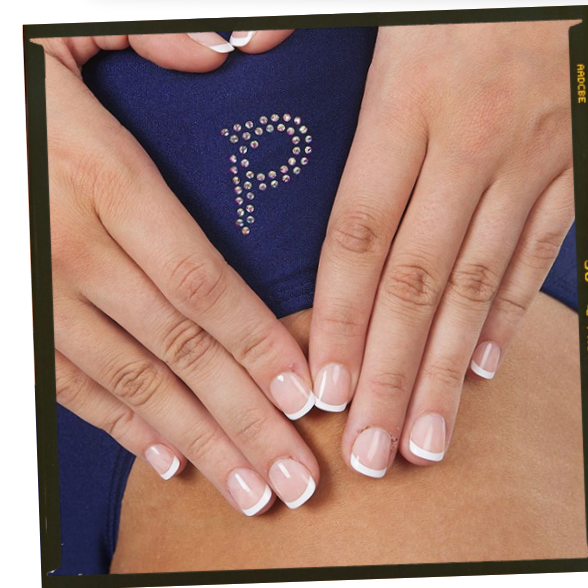
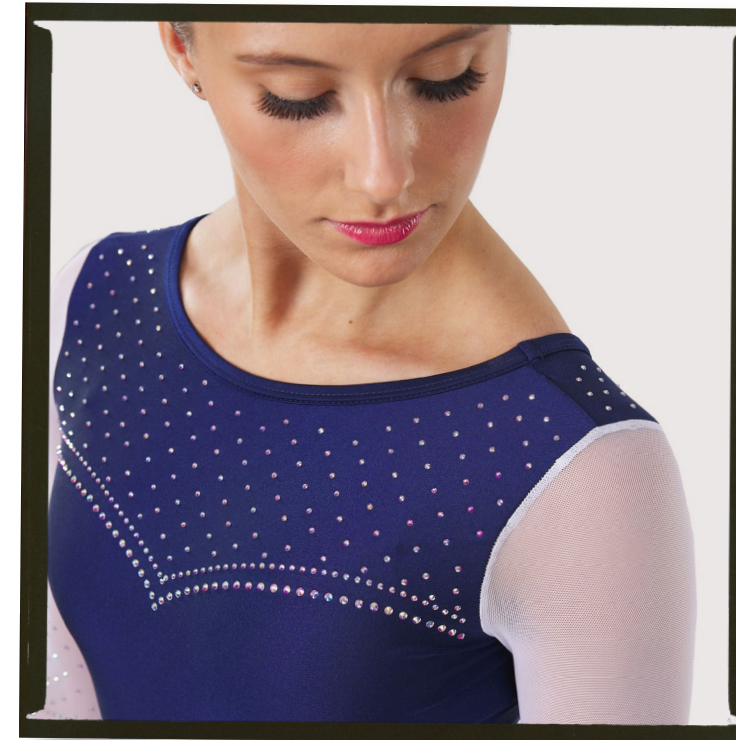
TANK STYLE AVAILABLE

CELESTE

Begin your reign as the snow queen in the Celeste leo!

When snow falls on a winter night, it creates the magical look of diamonds sprinkling the earth. Celeste captures the dreamlike snowfall perfectly and will help you entrance the judges when you compete. The V-neck beaded design complements any figure, while the same trickling of rhinestones on the wrist commands attention.





COLETTE

Own your confidence in this classic leo!

A tasteful classic, the Collette exudes grace and elegance. The beaded neck is a unique, yet straightforward, pattern sure to complement any gymnast's figure. The same beaded design is mimicked on the wrists to catch the eye of the judges. A sprinkling of rhinestones on the back completes the look with an even shine.

The modest cut is secure so that you can compete with confidence throughout your entire routine.



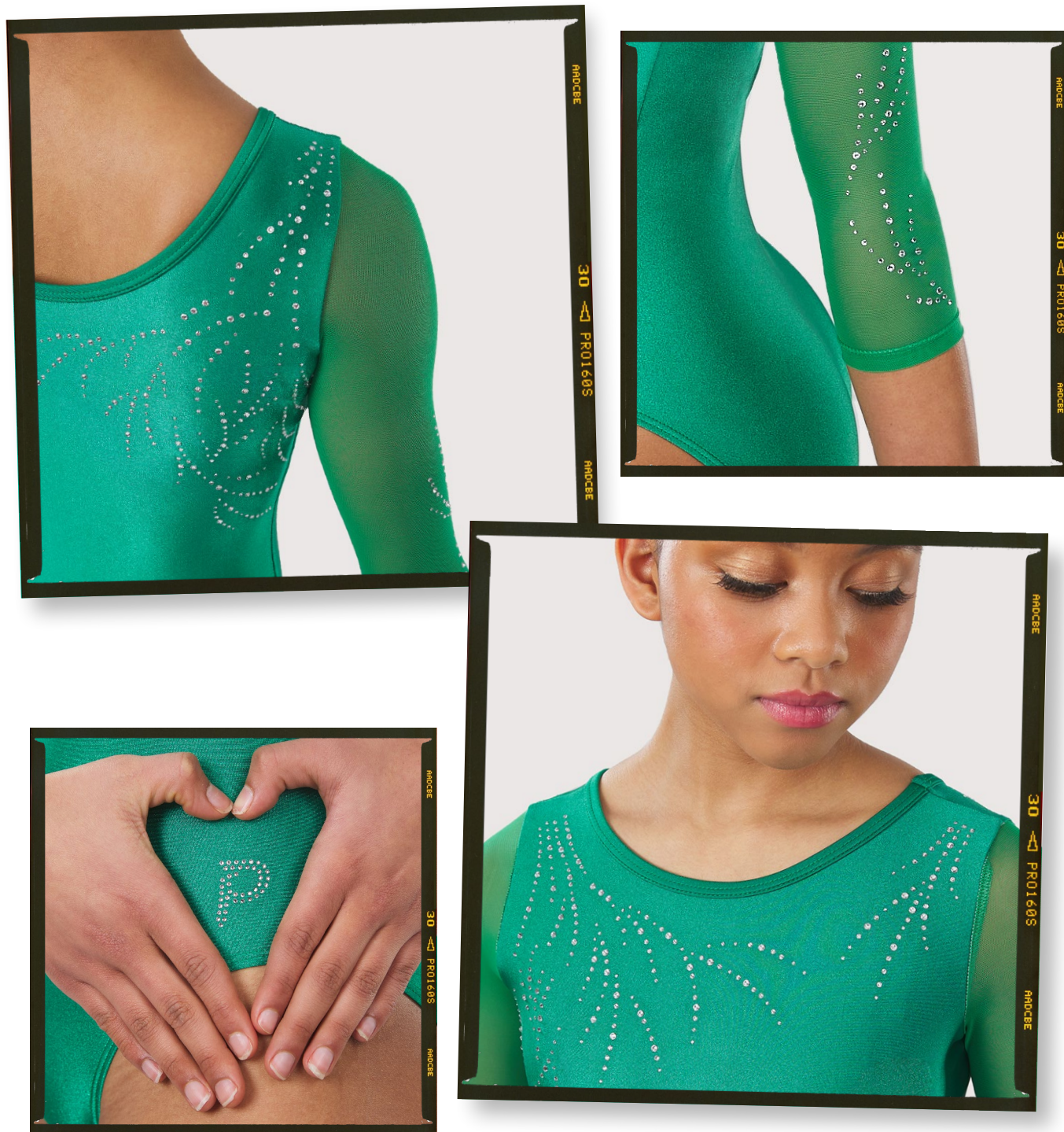
TANK STYLE AVAILABLE

DELILAH

Dazzle the competition in this gorgeously-crafted piece!

The Delilah leo offers a splash of stars that cascade down the bodice of this leotard to create a beautiful, eye-catching effect.



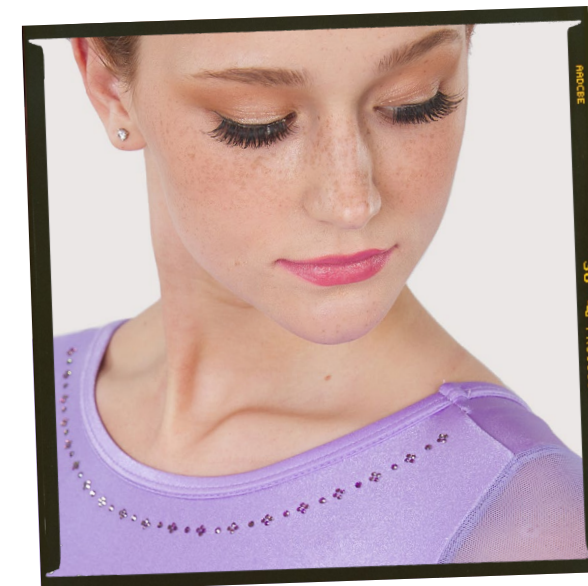


DYNAMIC

Compete confidently with this sparkly favorite!

Dynamic's beaded design perfectly captures the look of a shoulder draped in stars. With a mix of rhinestone sizes, this leo brings the flare for our sparkle-loving #PlumGirls. This style fits nicely with nearly any color scheme and is perfect for teams looking to stand out from the competition.

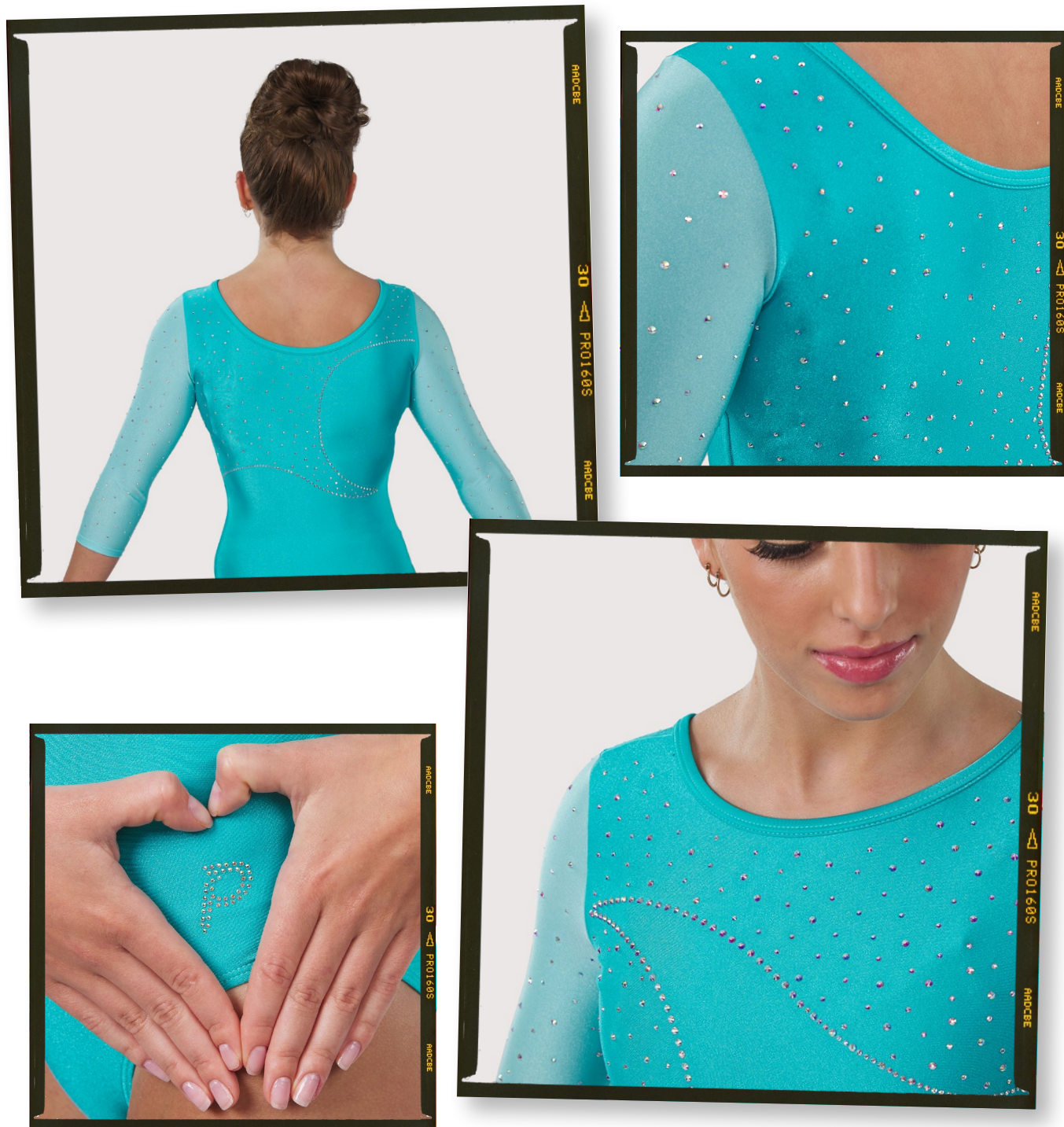




LAUREN

Channel regal grace in the Lauren leo!

The Lauren leo features ornate embellishments inspired by diamonds and nobility. An exquisite pattern wraps around the waist with encapsulating jeweled details. The simple bodice of this leo only brings more attention to the distinctive array of crystals, and the belted design creates a figure-flattering effect.



OCEANA

This garment is perfect for seaside gymnasts wanting to showcase their roots!

The sea meets the sky in this trendsetting and unique leo. The crystal detail of this garment manages to be intricate without sacrificing coverage and comfort. The embellishments on the front translate nicely into the back as well for an all-around sparkle.





TANK STYLE AVAILABLE

OLIVIA

Shine Brighter Than the Competition!

This dazzling and captivating leotard will make you feel like a shining star on the mat. Inspired by the glimmering beauty of a radiant chandelier adorned with sparkling crystals, Olivia is a true masterpiece that combines art and sport in one stunning leo.



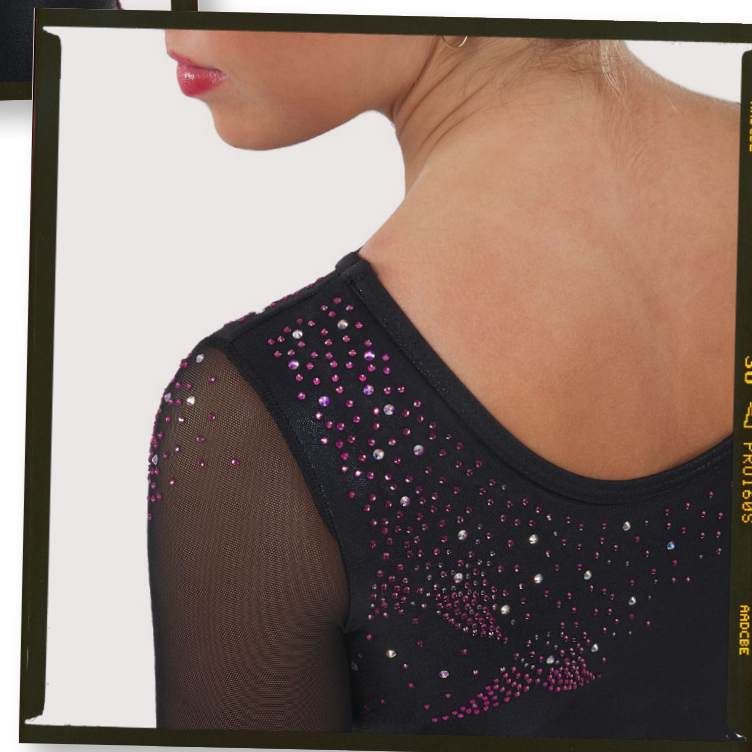
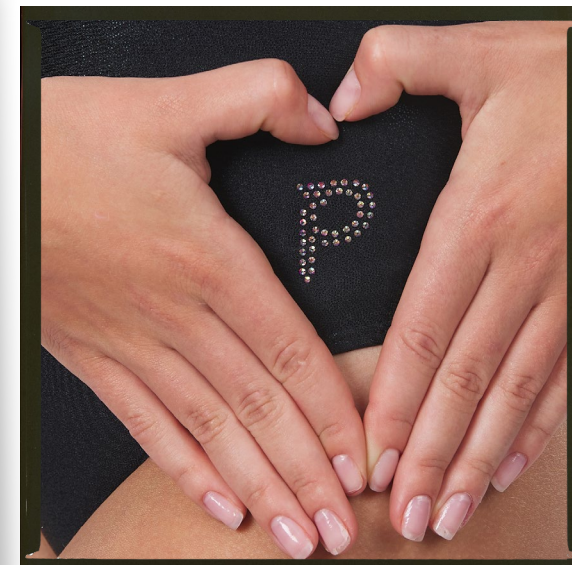
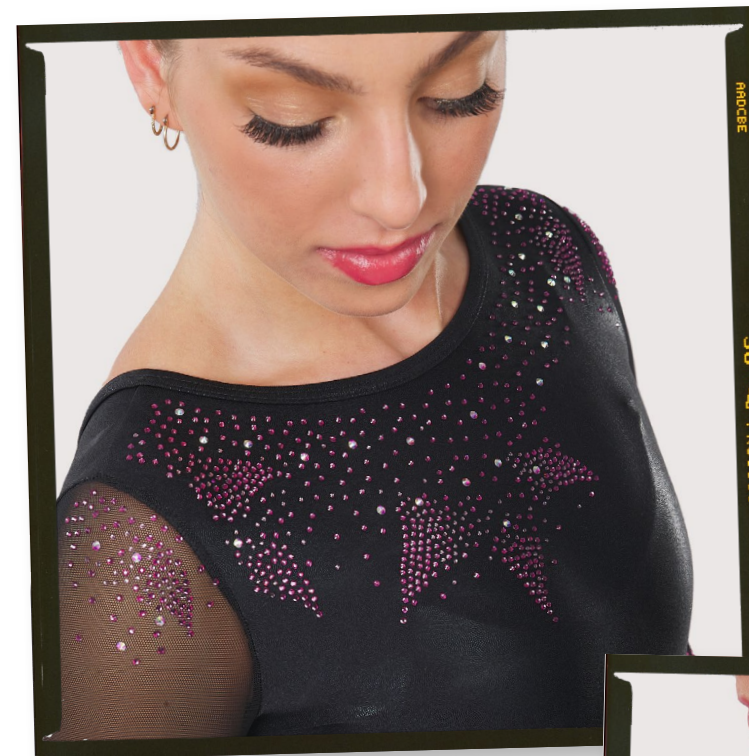
TANK STYLE AVAILABLE

PINNACLE

Exude success and confidence when you compete in Pinnacle!

Pinnacle (noun) meaning the most successful point. We believe that each time you compete in your #PlumLeo you should feel like you can take on the world. The Pinnacle leo helps you do just that with a dignified design and reliable fabric that is made to move with you. The luxurious details on the chest and dusting of sparkles down the bodice fit all style preferences and colors.





SEA STAR

Channel the strength and beauty of the sea star in this leo!

The sea star is a creature unlike any other. It may appear delicate, but its protective and colorful outer armor gives it strength and unmatched beauty. We created this leo hoping to inspire #PlumGirls to be fierce and unique like the sea star while they compete. This comfortable and secure leo will stay on firmly throughout your routine so that you can focus on success and nothing else.



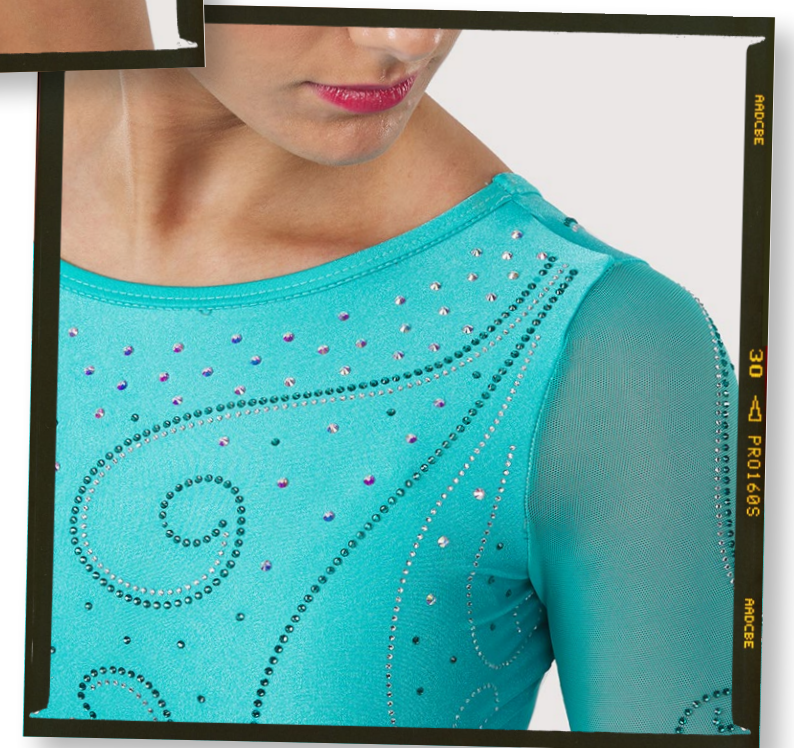
SERENA

Customize this piece any way you please to sport the competition leo of your dreams!

This enchanting piece has the “it” factor and will help your team stand out from the competition. It features an intricate beaded neck design and more rhinestones floating up the wrists to deliver unmatched glamour.

The same embellishments are featured on the back to give an eye-popping look from all angles.



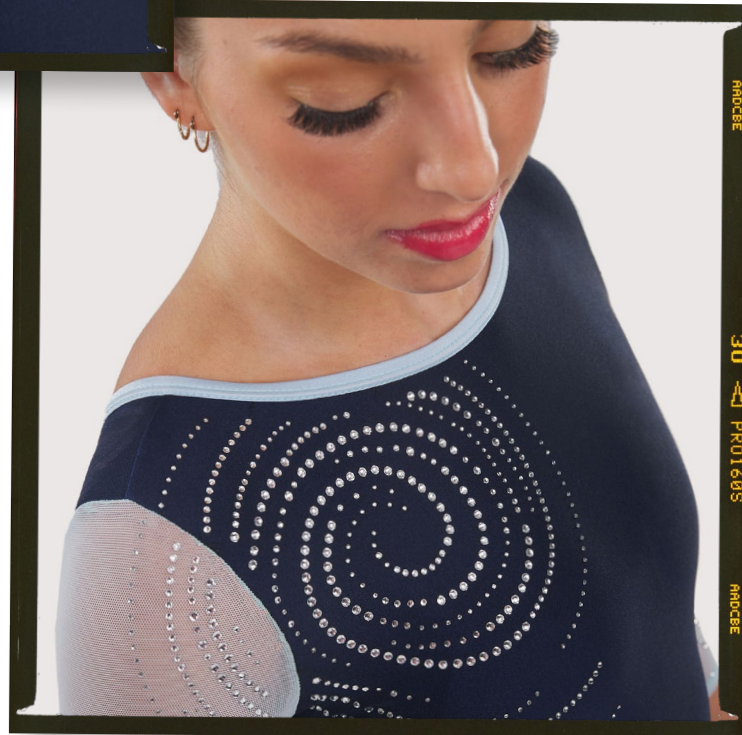


TANK STYLE AVAILABLE

SOPHIA

This whimsical leo is made for our #PlumGirls that never shy away from extra shine.

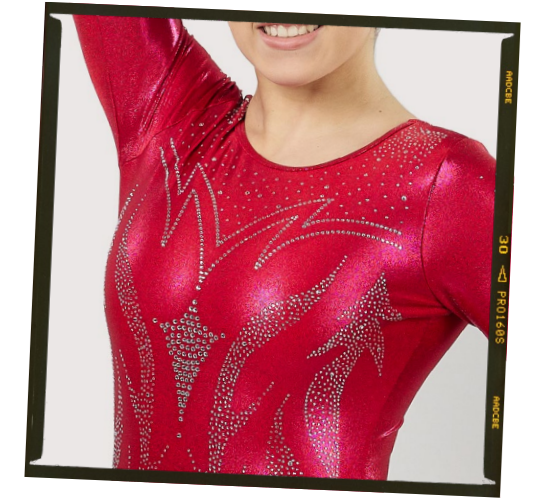
The Sophia leo reminds us of nights in Paris. The wispy details dance across the piece as effortlessly as your routine. The diagonal placing of the rhinestones creates a figure-flattering effect, while our signature fabric is built for comfort and reliability.



STORM

Become a raging storm against the competition when you sport this leo!

Have you ever seen heat lightning on a cloudy night? Flashes of light pop across the sky, leaving traces of electric designs written in the clouds. The Storm leo is our take on this phenomenon with bursts of light adorning the bodice. Any team color would play nicely with the details of this garment.



TANK STYLE AVAILABLE



VICTORIA

The perfect leo to make a statement at your next meet!

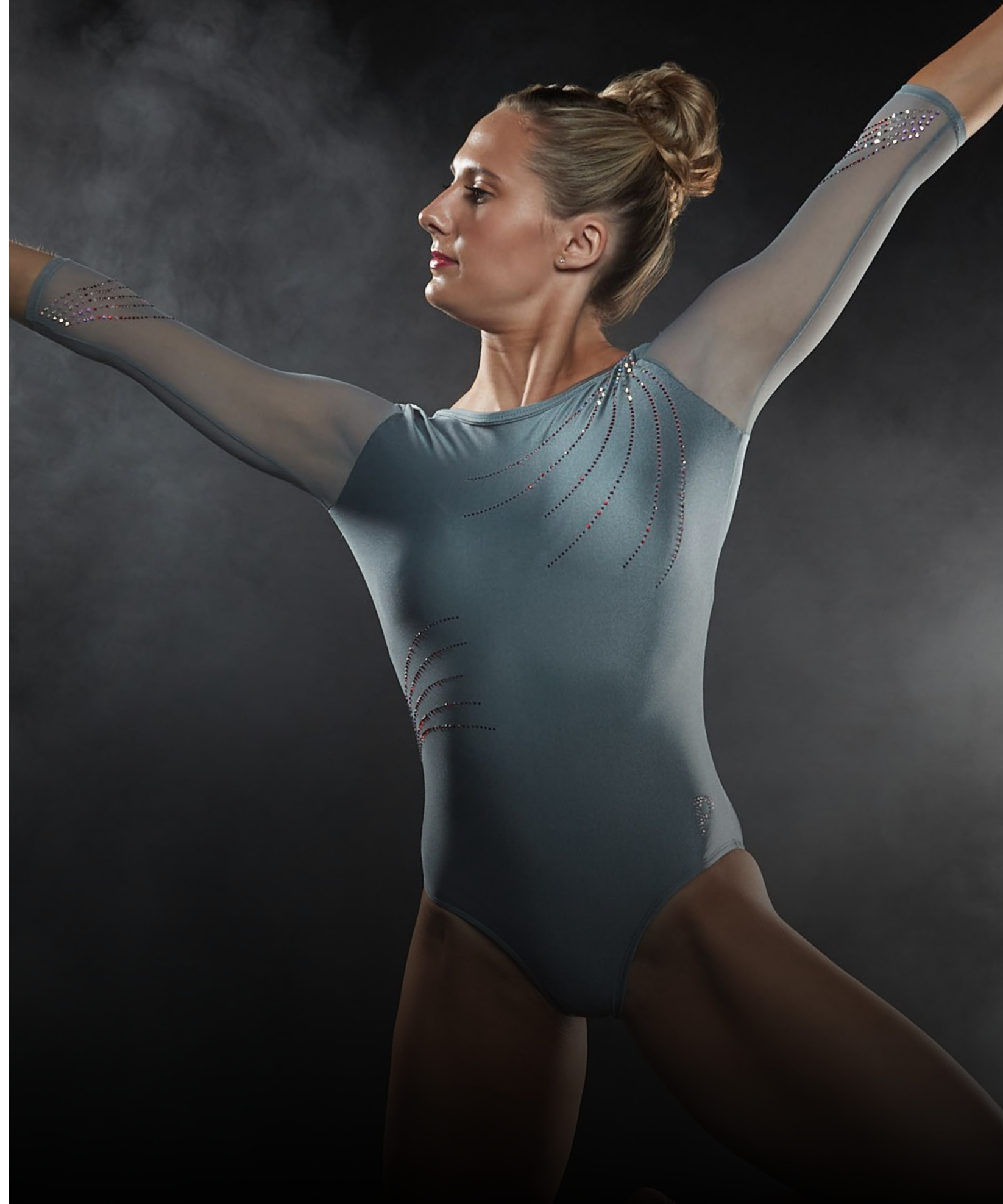
Victoria was designed with the utmost care and attention to detail, ensuring that every aspect of it is beautiful and designed to help you perform your best. With elegant swoops and swirls, we crafted the leo to make every athlete feel beautiful, confident, and strong in the clouds.



WHISPER

Exude the soft beauty and strength of Whisper when you compete!

A quiet beauty can also be strong and fierce, so we created Whisper to capture that simple yet elegant strength. Long strokes of beaded design give this piece artistic precision. The cut is modest and offers maximum coverage and comfort for all body types. This leo plays well with any color and customization as well.





Teamwear

Merchandise

Have your team arrive in style with Plum's customizable legging, bags, jackets, shorts, and tanks!

Contact our Sales Team to learn more.

Jackets



Leggings



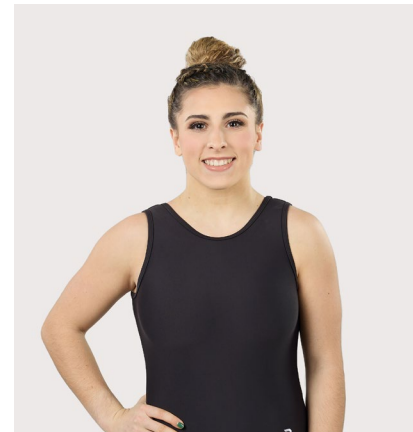
Backpacks



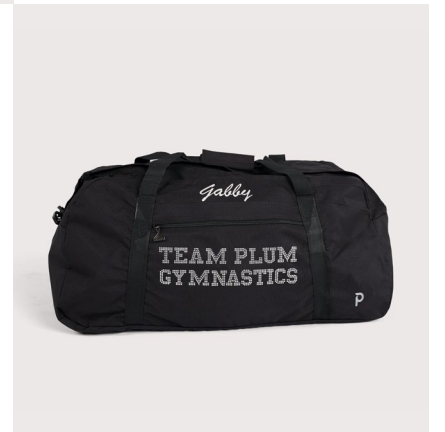
Shorts



Duffles



Tank Leos





Ordering is Simple

Compete confidently, knowing that your leo is secure, elegant, comfortable, and made just for you.

1.

Select Your Style

Choose the style that perfectly suits your team from our selection of graceful, unique, and refined competitive designs!



2.

Select Your Fabric Colors

Customize the leo of your choosing with team colors and specified fabrics.



3.

Select Your Embellishment

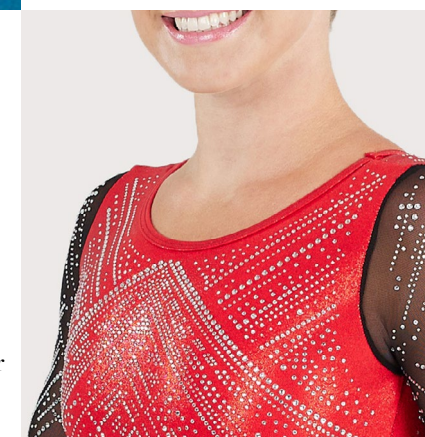
You can also select your rhinestone color and add contrasting colors.



4.

Contact Us and Request a Mockup

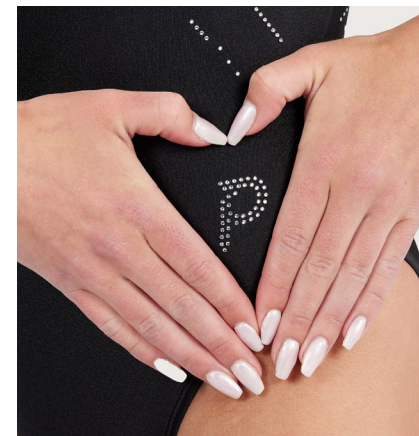
Once you've decided on your leo style and customizations, contact our sales team and get the ball rolling.



5.

Receive Your Mockup

After choosing from one of the digital mockups, we will send you sample fabric swatches for your approval.



6.

Sizer Sets Available

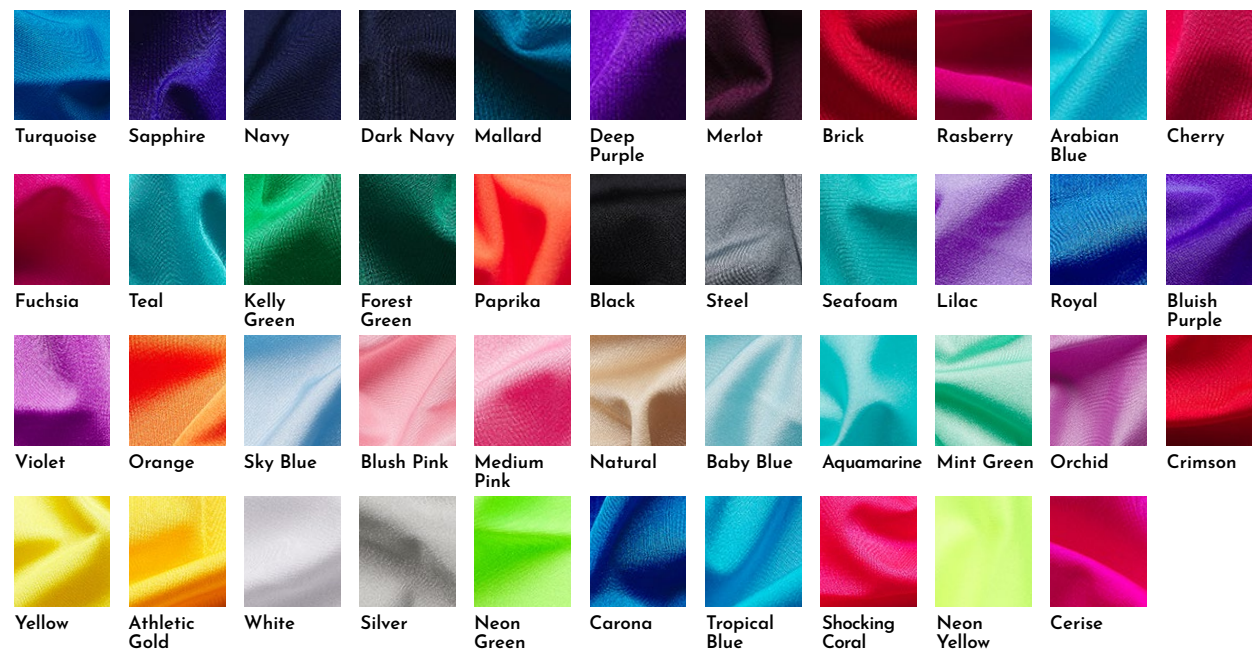
Plum highly recommends utilizing our sizer sets when placing your order so you can make sure each athlete is sized correctly.



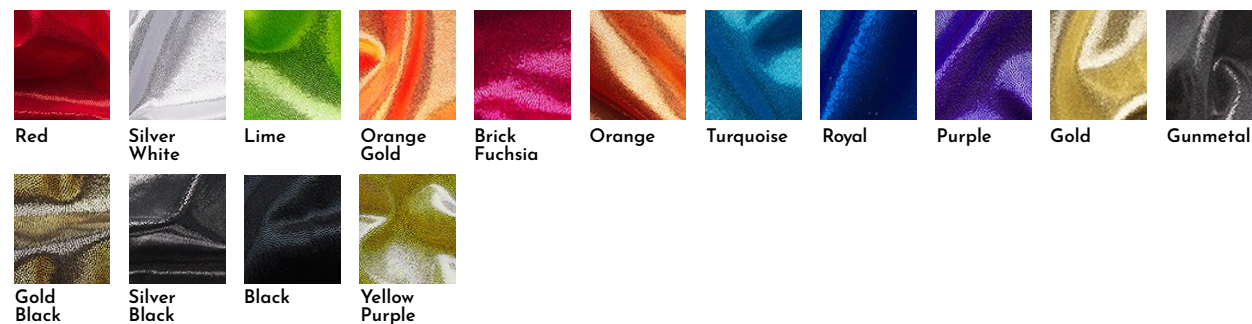
Fabric + Embellishment Options

Customize the look of your choosing with team colors and specified fabrics. You can also decide your rhinestone color and add contrasting colors and embellishments at an additional cost for a look that's completely tailored to your liking.

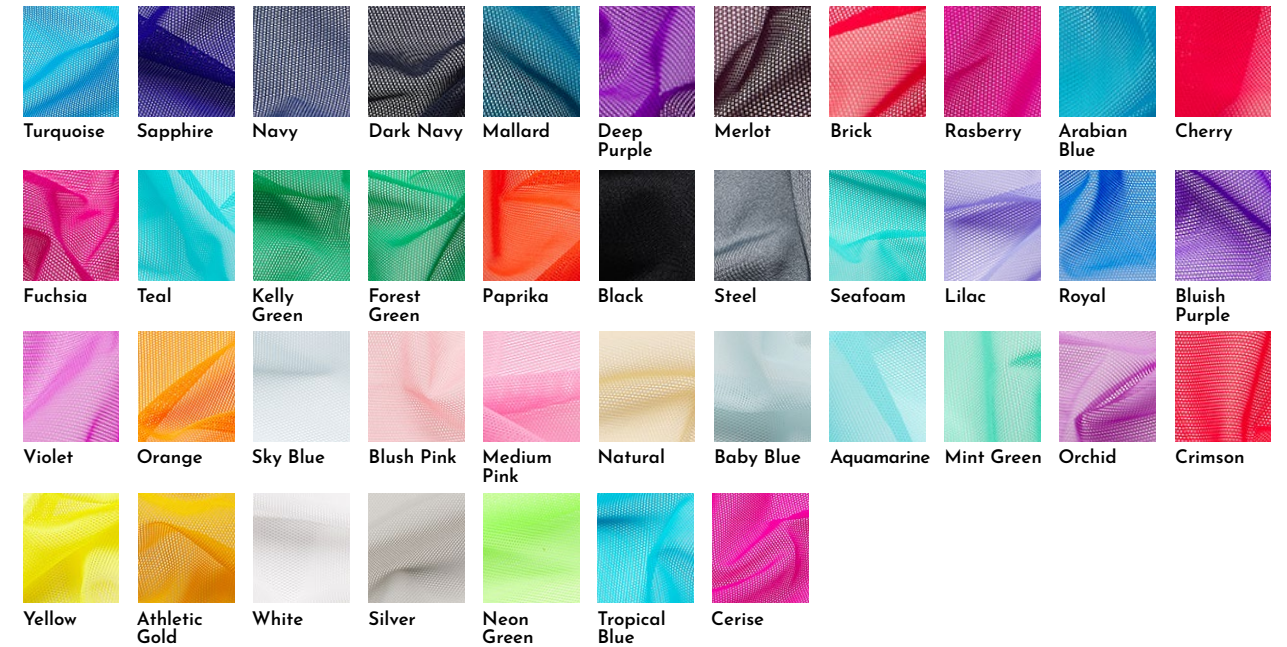
NYLON



MATRIX DOT



MESH SLEEVES



LINING



RHINESTONES





Competitive Tanks

Competitive tank leos now available in the following styles: **Athena, Brilliance, Cassandra, Celeste, Colette, Delilah, Olivia, Pinnacle, Sophia, Serena and Victoria!**

Our Story

As a leader in lifestyle athletic wear, Plum's focus is to outfit every athlete from their home to the gym in limited-edition apparel that is designed to deliver comfort during every level of training.

Founded within the gymnastics industry, our commitment to our customers is appreciation, availability and ready-to-ship signature collections worldwide. Each customer is embraced by the #PlumFamily and our culture emphasizes positivity, female empowerment, philanthropy, and producing garments that are "Stitched With Purpose."

#PlumLove

Founded in New Jersey in 2009, the heartbeat of Plum's brand is fed by being part of the journey in the gym, experiencing the day-to-day training, as a gymnast practices towards perfection. Plum believes that every gymnast is a champion from day one. While the world ogles in amazement over the finished end-product of an elite gymnast, Plum understands the commitment, dedication, fearlessness, and roller coaster of events that comes with growing in this amazing sport.

From the first pointed toe, to each plié in dance class, to grips and rips, the chills from a new skill, and chalk-covered gear, we want to be there with you. As a result, EVERY decision that we make has the athlete in mind - from minimizing seams, to soft breathable fabrics, to individually wrapping each garment to preserve the hygienic quality throughout the shipping process - comfort and quality is key.

Contact Sales & Compete Confidently in Plum!

customorders@plumpracticewear.com

Compete
Confidently™

plum