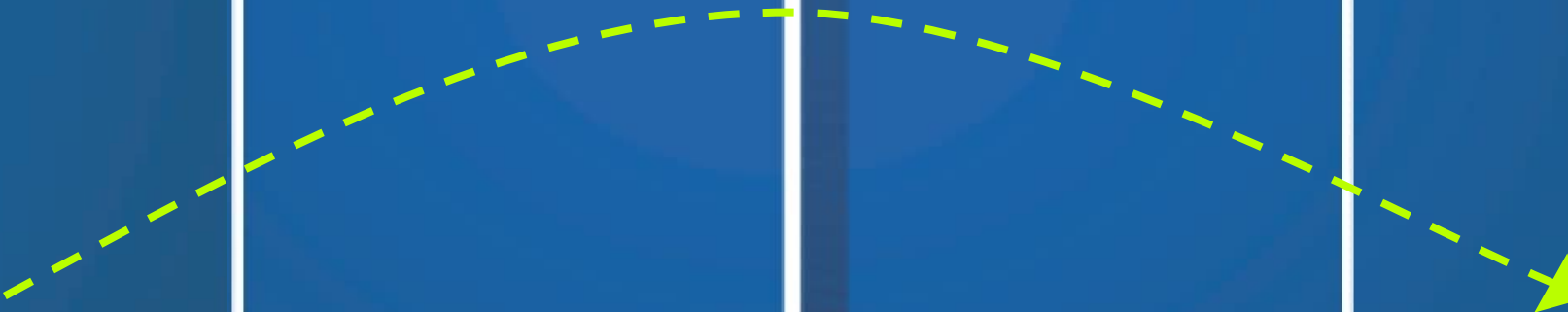


WILSON PLAY

TEAMS BOOK



H1 24

INTENT

The Wilson Teams Playbook is intended to serve as an informative sales tool. The contents informs key product knowledge with a focus on points of measurements and unique performance attributes for the seasonal Teams line.

ASSORTMENT & PRODUCT KNOWLEDGE



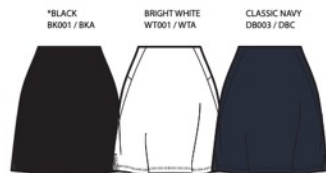
STYLE NAME: W TEAM TANK
 STYLE #: WW00286411
 FABRIC: ACTIVE JERSEY W22Q3KN0252S
 PRICE: 40 CHF
 STATUS: NEW



STYLE NAME: W TEAM SEAMLESS TEE
 STYLE #: WW00287411
 FABRIC: ACTIVE JERSEY W22Q3KN0252S
 PRICE: 45 CHF
 STATUS: NEW



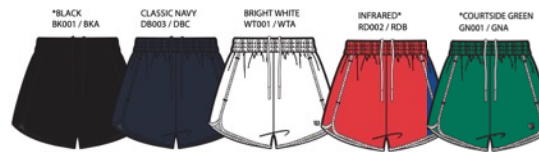
STYLE NAME: W TEAM POLO
 STYLE #: WW00288411
 FABRIC: ACTIVE JERSEY W22Q3KN0252S
 PRICE: 55 CHF
 STATUS: NEW



STYLE NAME: W TEAM SKIRT
 STYLE #: WW00289411
 FABRIC: RECYCLED INTERLOCK W21Q3KN0056S
 PRICE: 50 CHF
 STATUS: NEW



STYLE NAME: W TEAM MINI SKIRT
 STYLE #: WW00290411
 FABRIC: SKIRT MESH W21Q3KN0096S
 RECYCLED INTERLOCK W21Q3KN0056S
 PRICE: 50 CHF
 STATUS: NEW



STYLE NAME: W TEAM SHORT
 STYLE #: WW00291411
 FABRIC: W22Q1W00124S
 PRICE: 50 CHF
 STATUS: NEW



STYLE NAME: W TEAM TIGHT
 STYLE #: WW00292411
 FABRIC: RECYCLED INTERLOCK W21Q3KN0056S
 PRICE: 65 CHF
 STATUS: NEW

H124 Wilson Teams – Assortment

Women's Whiteboard



INFRARED*
 PANTONE: 17-1664 TCX
 RD002 / RDB



CARDINAL*
 PANTONE: 19-1934 TCX
 RD010 / RDJ



ROYAL BLUE*
 PANTONE: 19-3952 TCX
 DB015 / DBO



*CLASSIC NAVY
 PANTONE: 19-3923 TCX
 DB003 / DBC



*COURTSIDE GREEN
 PANTONE: 18-5633 TCX
 GN001 / GNA



BRIGHT WHITE*
 PANTONE: 11-0601 TCX
 WT001 / WTA



MEDIUM GRAY HEATHER*
 MG003 / MGC



*BLACK
 PANTONE: 19-3911 TCX
 BK001 / BKA



STYLE NAME: W TEAM DRESS
 STYLE #: WW00293411
 FABRIC: RECYCLED INTERLOCK W21Q3KN0056S
 PRICE: 65 CHF
 STATUS: NEW



STYLE NAME: W TEAM JACKET
 STYLE #: WW00294411
 FABRIC: W22Q1W00124S
 PRICE: 75 CHF
 STATUS: NEW



STYLE NAME: W TEAM WARM-UP PANT
 STYLE #: WW00295411
 FABRIC: W22Q1W00124S
 PRICE: 65 CHF



STYLE NAME: M UNISEX TEAM ZIP HOODIE
 STYLE NUMBER: WM00291411
 FABRIC: W24Q1KN0347S COTTON POLY FRENCH TERRY
 PRICE: 70 CHF



STYLE NAME: M TEAM JOGGER
 STYLE NUMBER: WM00292411
 FABRIC: W24Q1KN0347S COTTON POLY FRENCH TERRY
 PRICE: 60 CHF



STYLE NAME: M UNISEX TEAM GRAPHIC TEE
 STYLE NUMBER: WM00290411
 FABRIC: KN0348S ORGANIC COTTON POLY (DGC)
 PRICE: 30 CHF

H124 Wilson Teams – Assortment

Women's Whiteboard



INFRARED*
 PANTONE: 17-1664 TCX
 RD002 / RDB



CARDINAL*
 PANTONE: 19-1934 TCX
 RD010 / RDJ



ROYAL BLUE*
 PANTONE: 19-3952 TCX
 DB015 / DBO



*CLASSIC NAVY
 PANTONE: 19-3923 TCX
 DB003 / DBC



*COURTSIDE GREEN
 PANTONE: 18-5633 TCX
 GN001 / GNA



BRIGHT WHITE*
 PANTONE: 11-0601 TCX
 WT001 / WTA



MEDIUM GRAY HEATHER*
 MG003 / MGC



*BLACK
 PANTONE: 19-3911 TCX
 BK001 / BKA



STYLE NAME: YG YOUTH TEAM TANK
 STYLE #: WYG0000411
 FABRIC: ACTIVE JERSEY W22Q3KN02525
 PRICE: 40 CHF
 STATUS: NEW



STYLE NAME: YG YOUTH TEAM POLO
 STYLE #: WYG0000411
 FABRIC: ACTIVE JERSEY W22Q3KN02525
 PRICE:
 STATUS: NEW



STYLE NAME: YG YOUTH TEAM SKIRT
 STYLE #: WYG0002411
 FABRIC: RECYCLED INTERLOCK W21Q3KN00565
 PRICE: 43 CHF
 STATUS: NEW



STYLE NAME: YG YOUTH TEAM SHORT
 STYLE #: WYG0003411
 FABRIC: W22Q1W00124S
 PRICE: 43 CHF
 STATUS: NEW



STYLE NAME: YB YOUTH UNISEX GRAPHIC TEE
 STYLE NUMBER: WYB0003411
 FABRIC: KN0348S ORGANIC COTTON POLY (DGC)
 PRICE: 27 CHF



STYLE NAME: YB YOUTH UNISEX TEAM ZIP HOODIE
 STYLE NUMBER: WYB0004411
 FABRIC: W24Q1KN0347S COTTON POLY FRENCH TERRY
 PRICE: 60 CHF



STYLE NAME: YB YOUTH UNISEX TEAM JOGGER
 STYLE NUMBER: WYB0005411
 FABRIC: W24Q1KN0347S COTTON POLY FRENCH TERRY
 PRICE: 55 CHF

H124 Wilson Teams – Assortment

Girl's Whiteboard



INFRARED*
 PANTONE: 17-1664 TCX
 RD002 / RDB



CARDINAL*
 PANTONE: 19-1934 TCX
 RD010 / RDJ



ROYAL BLUE*
 PANTONE: 19-3952 TCX
 DB015 / DBO



*CLASSIC NAVY
 PANTONE: 19-3923 TCX
 DB003 / DBC



*COURTSIDE GREEN
 PANTONE: 18-5633 TCX
 GN001 / GNA



BRIGHT WHITE*
 PANTONE: 11-0601 TCX
 WT001 / WTA



MEDIUM GRAY HEATHER*
 MG003 / MGC



*BLACK
 PANTONE: 19-3911 TCX
 BK001 / BKA



Women's	POINT OF MEASUREMENT	TARGET SPECS (S)
	BK BODY LENGTH FROM HPS	56
	CHEST @ 2cm down from armhole	70.5
	SWEEP @BOTTOM	76.5
	HEM HEIGHT	1.5
	NECK WIDTH- EDGE TO EDGE	14
	FT NK DROP/HPS TO EDGE	10
	BK NK DROP /HPS TO EDGE	3.5
	ACROSS BACK WIDTH @9CM FM NK EDGE	13
	SHOULDER WIDTH EACH SIDE @EDGE TO EDGE	3.5
	SHOULDER SLOPE	2.5
	ARMHOLE STRAIGHT @EDGE TO EDGE	20
	BINDING HEIGHT	1.2
	CB LOGO POSITION: FROM NK EDGE TO CENTER OF LOGO	4

Girl's	POINT OF MEASUREMENT	TARGET SPECS (S)
	HPS TO SWEEP LINE	47
	BK BODY LENGTH FROM HPS	49
	CHEST @ 2cm down from armhole	72
	SWEEP @BOTTOM	72
	HEM HEIGHT	1.5
	NECK WIDTH- EDGE TO EDGE	16
	FT NK DROP/HPS TO EDGE	10.5
	BK NK DROP /HPS TO EDGE	3
	ACROSS BACK WIDTH @9CM FM NK EDGE	11.5
	SHOULDER WIDTH EACH SIDE @EDGE TO EDGE	3.5
	SHOULDER SLOPE	2
	ARMHOLE STRAIGHT @EDGE TO EDGE	17
	BINDING HEIGHT	1.2

H124 Wilson Teams – Women's and Girl's

Style: W TEAM TANK

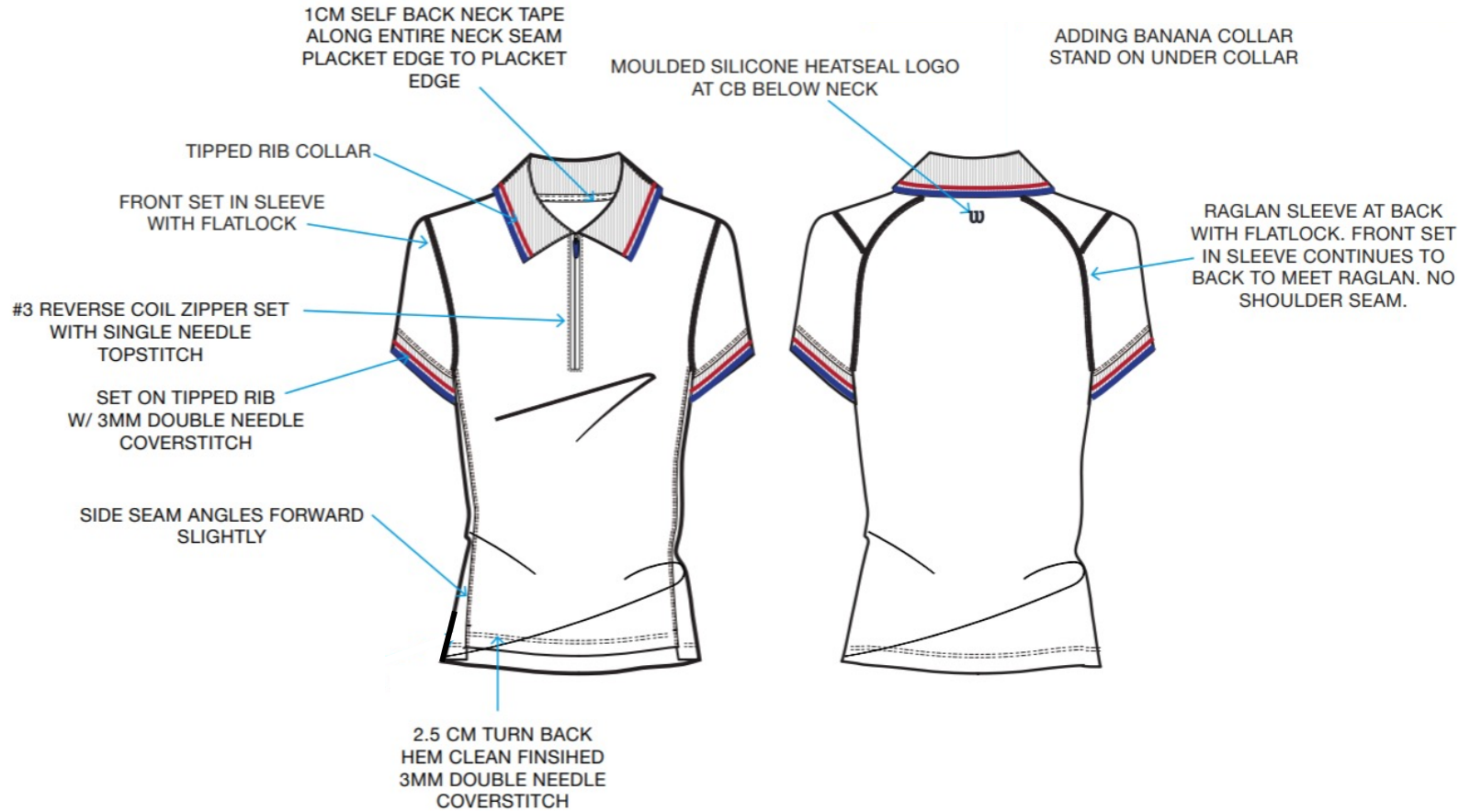
Price:

Fit: Fitted

Fabric Family: WLSN PRO

- Stretch
- Quick-drying





Women's	POINT OF MEASUREMENT	TARGET SPECS (S)
	BACK BODY LENGTH	60
	FRONT BODY LENGTH	57
	SLIT HEIGHT	5.5
	ACROSS SHOULDER	35
	SHOULDER SLOPE	3.5
	ACROSS CHEST 13CM FROM HPS	32
	ACROSS BACK 13CM FROM HPS	33
	CHEST (2cm under armhole)	83
	SWEEP/HEM STRAIGHT @ EDGE	85
	BTTM HEM HEIGHT	3
	COLLAR PONT	6.5
	COLLAR HEIGHT @ CB	8
	COLLAR WIDTH ALONG EDGE	39
	PLACKET LENGTH	16
	BACK NECK WIDTH EDGE TO EDGE	19

Girl's	POINT OF MEASUREMENT	TARGET SPECS (M)
	BACK BODY LENGTH	49
	FRONT BODY LENGTH	47
	SLIT HEIGHT	5.5
	ACROSS SHOULDER	30.5
	SHOULDER SLOPE	3
	ACROSS CHEST 13CM FROM HPS	28
	ACROSS BACK 13CM FROM HPS	29
	CHEST (2cm under armhole)	81
	SWEEP/HEM STRAIGHT @ EDGE	81
	BTTM HEM HEIGHT	2.5
	COLLAR PONT	6
	COLLAR HEIGHT @ CB	6.7
	COLLAR WIDTH ALONG EDGE	34.5
	PLACKET LENGTH	12
	BACK NECK WIDTH EDGE TO EDGE	15.7

H124 Wilson Teams – Women's and Girl's

Style: W TEAM POLO

Price:

Fit: Athletic

Fabric Family: WLSN PRO

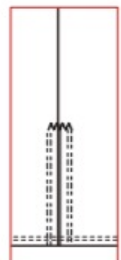
- Stretch
- Quick-drying



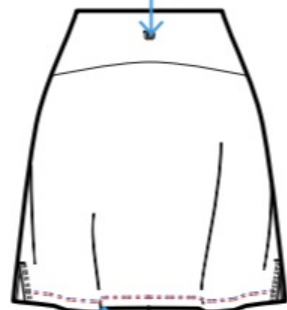
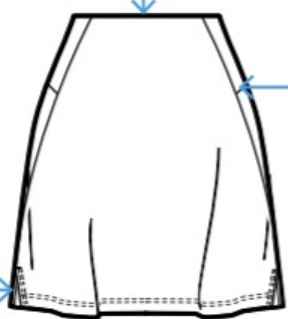
WAIST EDGE EXTERIOR IS CLEAN FINISHED TO INTERIOR SHORT WITH SOFT KNIT ELASTIC SADOWICHED IN BETWEEN.

CB YOKE ENDS AT FRONT BODY SEAMS.

RUBBERIZED HEAT TRANSFER W



ON-SEAM SIDE SLITS W/ SELF INTERIOR TAPE. 6MM DNTS EDGES. BARTACK ENDS. *SLITS STRAIGHT ON SS*



1.5CM HEM TURN-BACK W/ 6MM 2NDL COVERSTICH

INTERIOR LINER SHORT

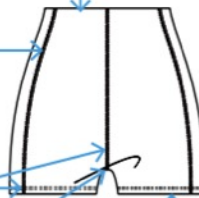
CLEAN FINISH INTO SHORT WAISTBAND.

SIDE PANEL IS CONTINUOUS - NO SIDE SEAMS

5MM FLATLOCKED SEAMS AT LEG, CF, CB, AND INSEAM

2 LAYER TRIANGLE GUSSET SET IN WITH 3MM FLATLOCK. 1 LAYER SELF, 1 LAYER POWER MESH

2CM TURNBACK HEM w/ 6MM 2DNL COVER-STITCH



Women's POINT OF MEASUREMENT	TARGET SPECS (S)
WAIST @TOP EDGE	65
HIP (3 POINT) 23CM FROM WB "HI WAIST"	100
SWEEP STRAIGHT @EDGE	117
HEM HEIGHT	2
BK YOKE LENGTH @CB	8
BK YOKE LENGTH @SS	13
SEAM FORWARD @WAIST	4
SS SLIT HEIGHT	4.5
BK PKT OPENING	13
BK PKT BAG LENGTH @CENTER	12
BK PKT POSITION FROM SS	5
OUTSEAM INC WB	40

Girl's POINT OF MEASUREMENT	TARGET SPECS (M)
WAIST @TOP EDGE	56
HIP (3 POINT) 10CM FROM WB "HI WAIST"	74
SWEEP STRAIGHT @EDGE	86
HEM HEIGHT	2
BK YOKE LENGTH @CB	4
BK YOKE LENGTH @SS	6
SEAM FORWARD @WAIST	2
SS SLIT HEIGHT	3
OUTSEAM INC WB	31

H124 Wilson Teams – Women's and Girl's

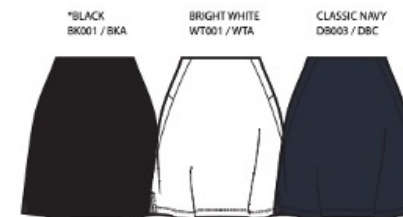
Style: W TEAM SKIRT

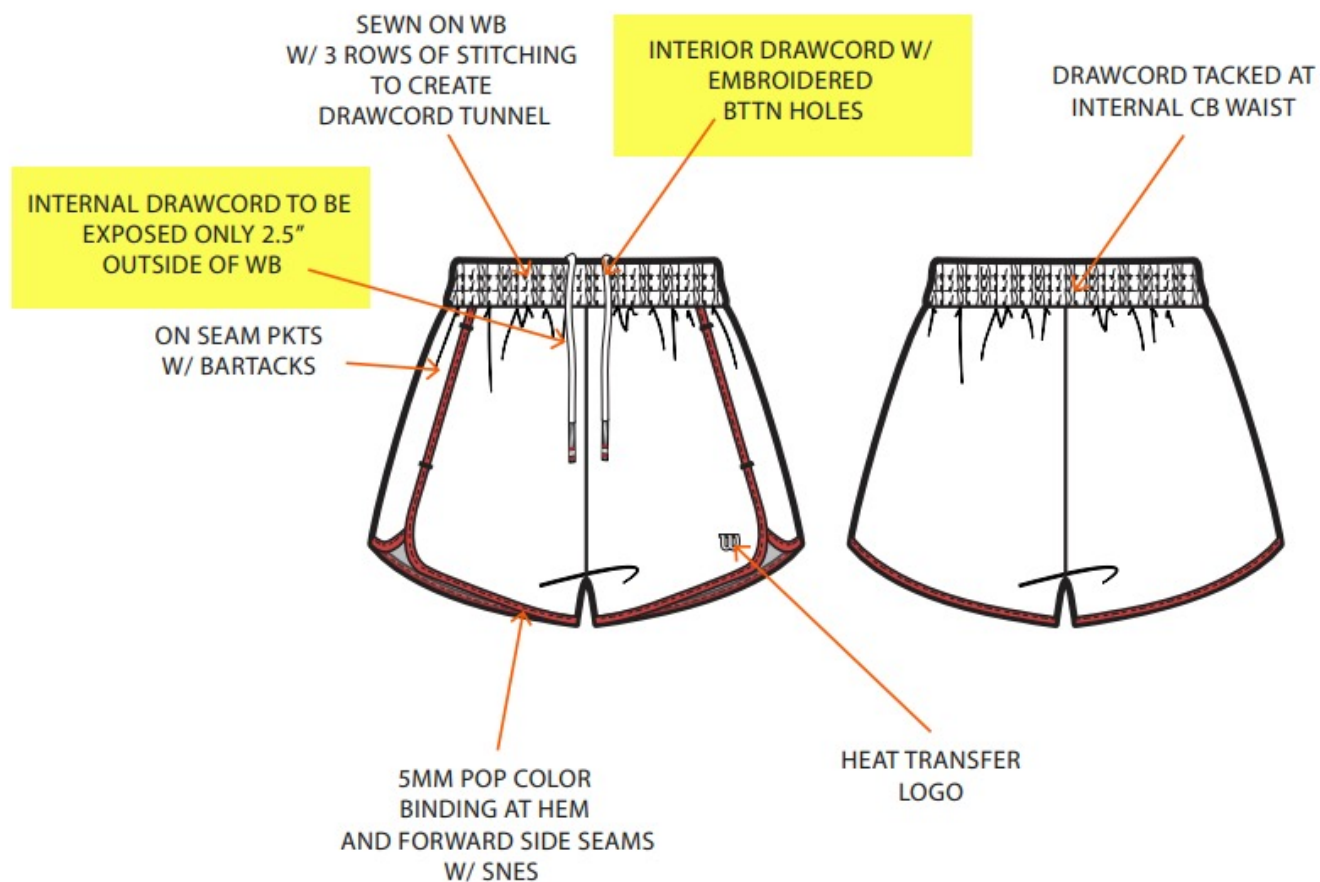
Price:

Fit: Athletic

Fabric Family: WLSN POWER

- Anti-odor
- Stretch
- Quick-drying





Women's	POINT OF MEASUREMENT	TARGET SPECS (S)
	WAIST RELAXED @CENTER	76
	WAIST EXTENDED	100
	WB HEIGHT @CF	4
	HIP 3PT @19CM FM TOP OF WB	108
	FRT RISE INC WB	30
	BK RISE INC WB	40
	LEG OPENING- AT TOP VENT	70
	SS LENGTH FROM TOP EDGE WB TO BARTACK	24
	ONSEAM PKT OPENING	14
	FT PKT BAG LENGTH @CF	23.5
	FT PKT BAG WIDTH @WIDEST	16
	INSEAM	7
	DRAWCORD EXPOSED EACH SIDE	25

Girl's	POINT OF MEASUREMENT	TARGET SPECS (M)
	WAIST RELAXED @CENTER	63.5
	WAIST EXTENDED	84
	WB HEIGHT @CF	4
	HIP 3PT @19CM FM TOP OF WB	86.5
	FRT RISE INC WB	24
	BK RISE INC WB	32
	LEG OPENING- AT TOP VENT	52
	INSEAM LENGTH	6.3
	OUTSEAM LENGTH FROM WB JOIN SEAM	
	ONSEAM PKT OPENING	14
	FT PKT BAG LENGTH @CF	19
	FT PKT BAG WIDTH @WIDEST	14
	DRAWCORD EXPOSED EACH SIDE	7

H124 Wilson Teams – Women's and Girl's

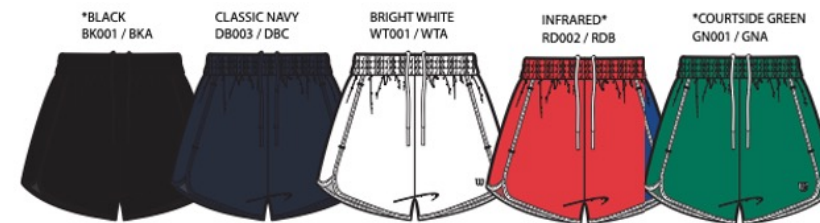
Style: W TEAM SHORT

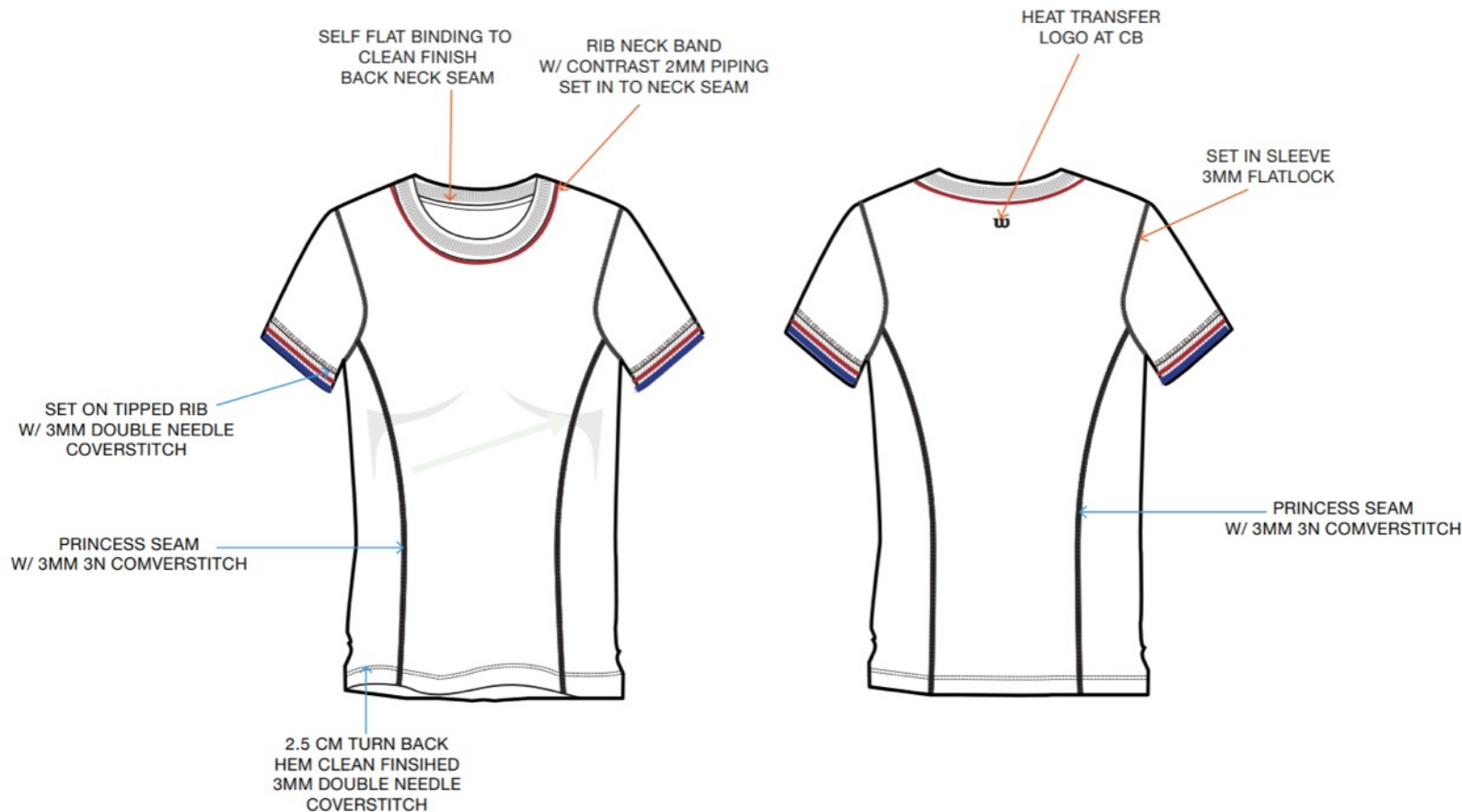
Price:

Fit: Classic

Fabric Family: WLSN REC

- Breathable
- Stretch
- Quick-drying





Women's	POINT OF MEASUREMENT	TARGET SPECS (S)
	FRONT BODY LENGTH- FROM HPS TO HEM	58
	BACK BODY LENGTH- FROM HPS TO HEM	56
	CHEST WIDTH-2CM BELOW ARMHOLE	81
	SWEEP OPENING STRAIGHT	81
	HEM HEIGHT	1.5
	SHOULDER WIDTH SM TO SM	36.5
	NECK WIDTH- SM TO SM	17
	FRONT NECK DROP- FROM HPS TO SM	11.4
	BACK NECK DROP- FROM HPS TO SM	2
	NECK RIB HEIGHT	2
	ARMHOLE STRAIGHT	19
	AH DROP FROM HPS	22.9
	SLEEVE LENGTH- FROM SHOULDER SEAM	15.9
	SLEEVE OPENING @EDGE	27.8

H124 Wilson Teams – Women's

Style: W TEAM SEAMLESS TEE

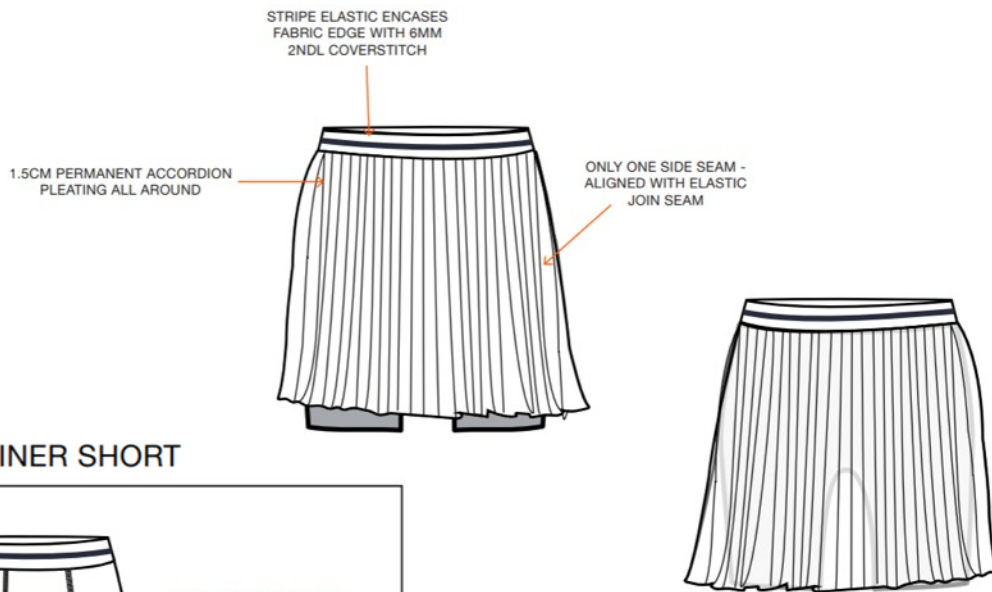
Price:

Fit: Classic

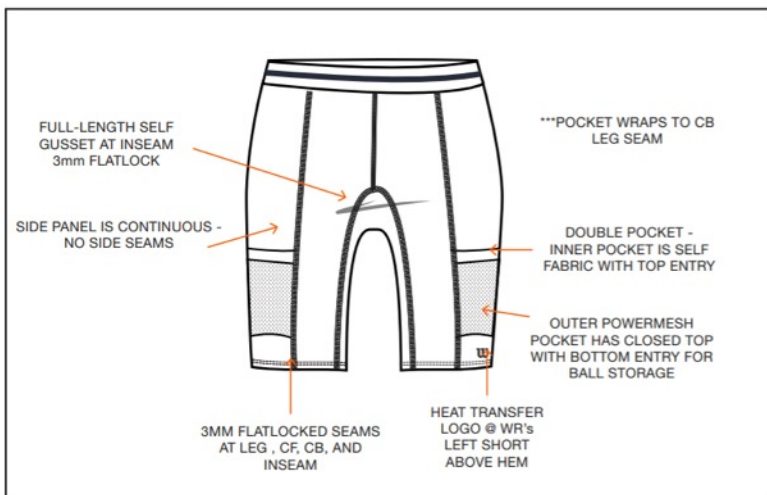
Fabric Family: WLSN PRO

- Anti-odor
- Ventilating
- Quick-drying
- Compressive





INTERIOR LINER SHORT



Women's	POINT OF MEASUREMENT	TARGET SPECS (S)
	WAIST RELAXED STRAIGHT	58
	SWEEP @EDGE OPEN PLEATS	300
	WB HEIGHT @CF	3.8
	SKIRT OUTSEAM LENGTH EXC WB	32
	SHORT/ HIP 15CM FROM TOP EDGE	71
	LEG OPENING	42
	SHORT OUTSEAM EXC WB	30.5
	FRT RISE (INC WB & EXC GUSSET)	25
	BACK RISE (INC WB & EXC GUSSET)	30
	GUSSET WIDTH	5.5
	LEG PKT LENGTH	10
	LEG PKTWIDTH	12.5
	LEG POCKET PLACEMENT FROM BTM EDGE	6

H124 Wilson Teams – Women's

Style: W TEAM PLEATED SKIRT

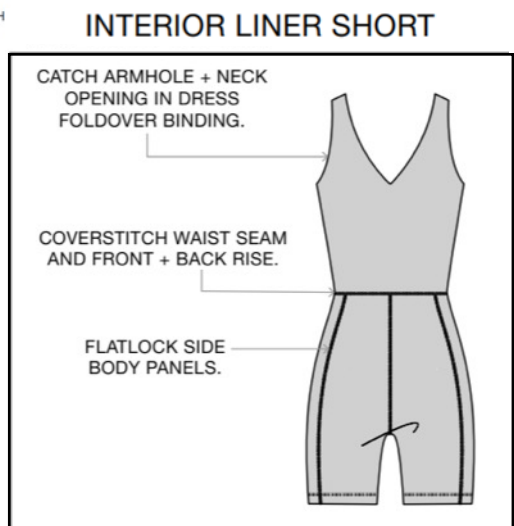
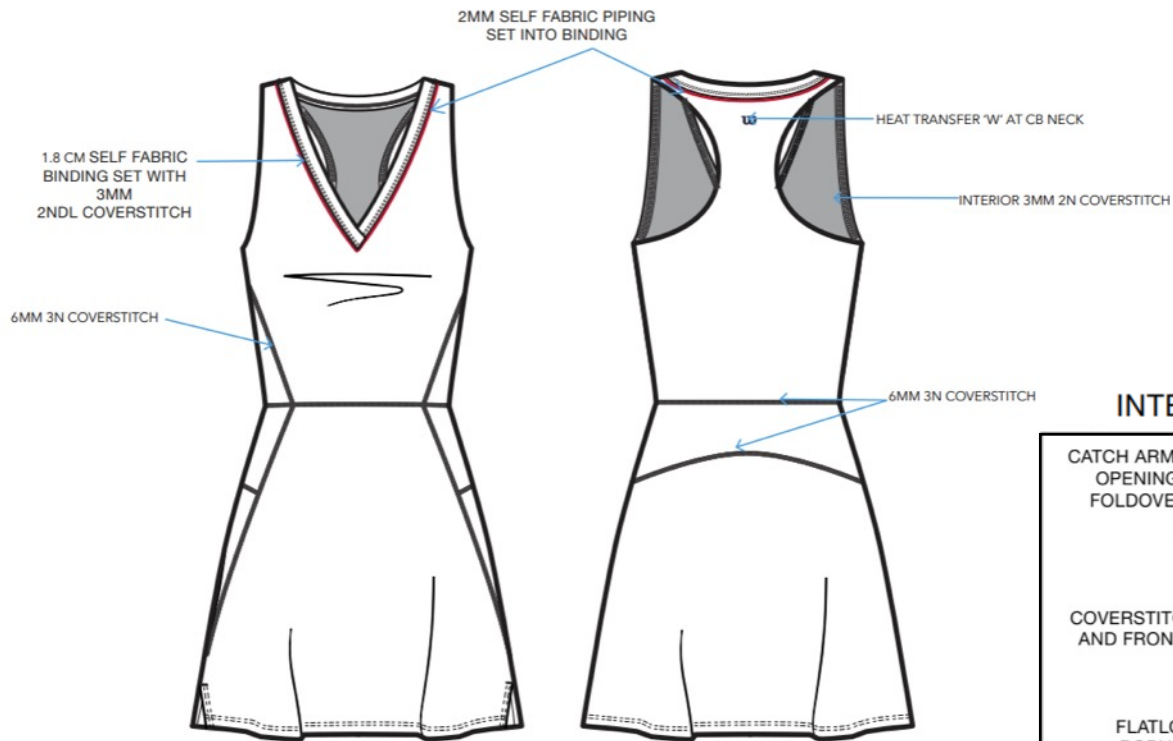
Price:

Fit: Athletic

Fabric Family: WLSN POWER

- Anti-odor
- Compressive
- Stretch
- Quick-drying





Women's	POINT OF MEASUREMENT	TARGET SPECS (S)
	FRONT BODY LENGTH @HPS	77
	BACK BODY LENGTH @HPS	77
	SHOULDER WIDTH - VEST EXC NECK BAND	2.5
	CHEST WIDTH @ 2CM FROM ARMHOLE	71
	WAIST @35CM FROM HPS	64
	HIP (3 POINT) 23CM FROM WAIST SEAM	101.5
	SWEEP @EDGE (STRAIGHT ACROSS)	117
	ARMHOLE STRAIGHT	18
	NECK WIDTH- SEAM TO SEAM	18
	FT NK DROP- FROM HPS TO NK SEAM	17.5
	BK NK DROP- FROM HPS TO NK SEAM	2
	NECK RIB	1.8
	SHOULDER SLOPE (HPS TO A/H SM)	1
	SHOULDER SEAM FORWARD @HPS	1.5
	RACER BACK WIDTH @11CM FROM HPS	5.5
	SKIRT: BACK YOKE LENGTH AT CB	7.5
	SKIRT: BACK YOKE LENGTH AT SS	15
	SKIRT: VENT LENGTH	5

H124 Wilson Teams – Women's

Style: W TEAM DRESS

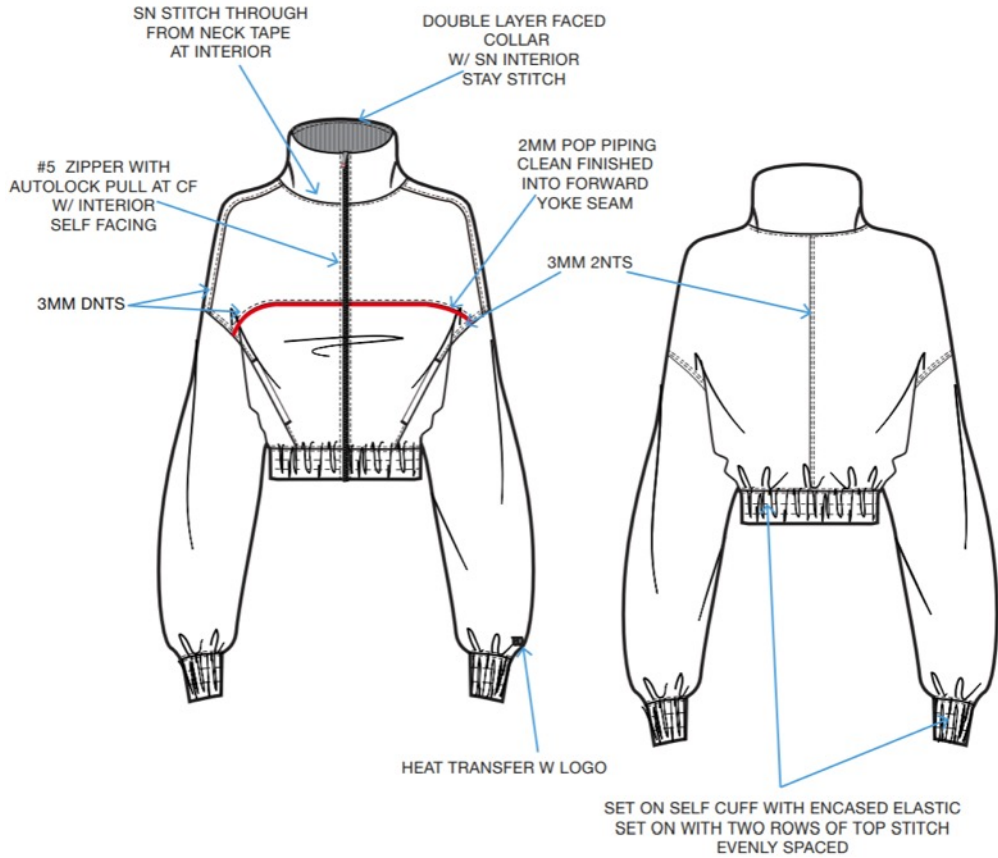
Price:

Fit: Fitted

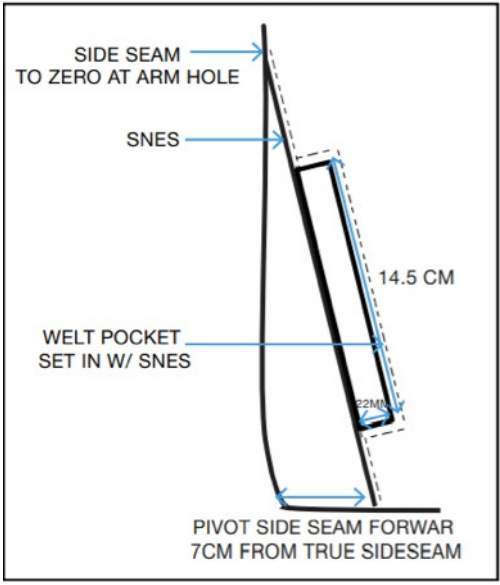
Fabric Family: WLSN PRO

- Compressive
- Stretch
- Quick-drying
- Moisture-wicking





ONSEAM WELT POCKET DETAILS



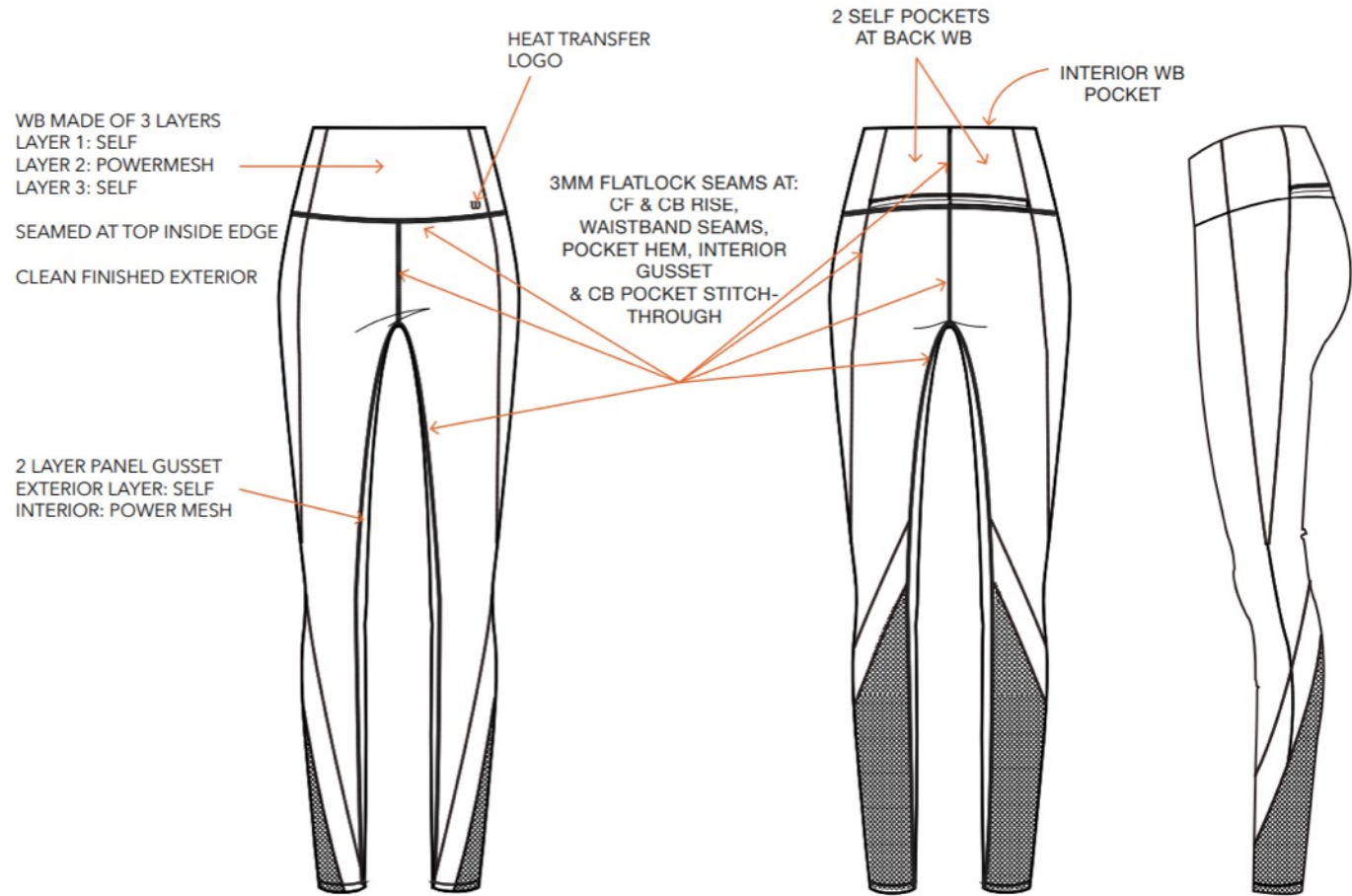
Women's	POINT OF MEASUREMENT	TARGET SPECS (S)
	Back Length (from HPS to hem edge)	53
	Chest Width (2.0cm Below Armhole)	105
	Hem Width	100
	Hem Width - relaxed	81
	Hem Height	6
	Across shoulder	51
	Armhole straight	23.5
	Long Sleeve Hem Width(extended measure)	23
	Long Sleeve Hem Width(relax measure)	18
	bicep width	41.5
	Sleeve Hem Height	6
	back neck width(seam to seam)	17.5
	Front Neck Drop(HPS to C.F.neck seam)	8.5
	Back Neck Drop	2.5
	C.B. Collar Height	6.5

H124 Wilson Teams – Women's

Style: W TEAM JACKET
 Price:
 Fit: Classic

- Fabric Family: WLSN REC
- Breathable
 - Stretch
 - Quick-drying





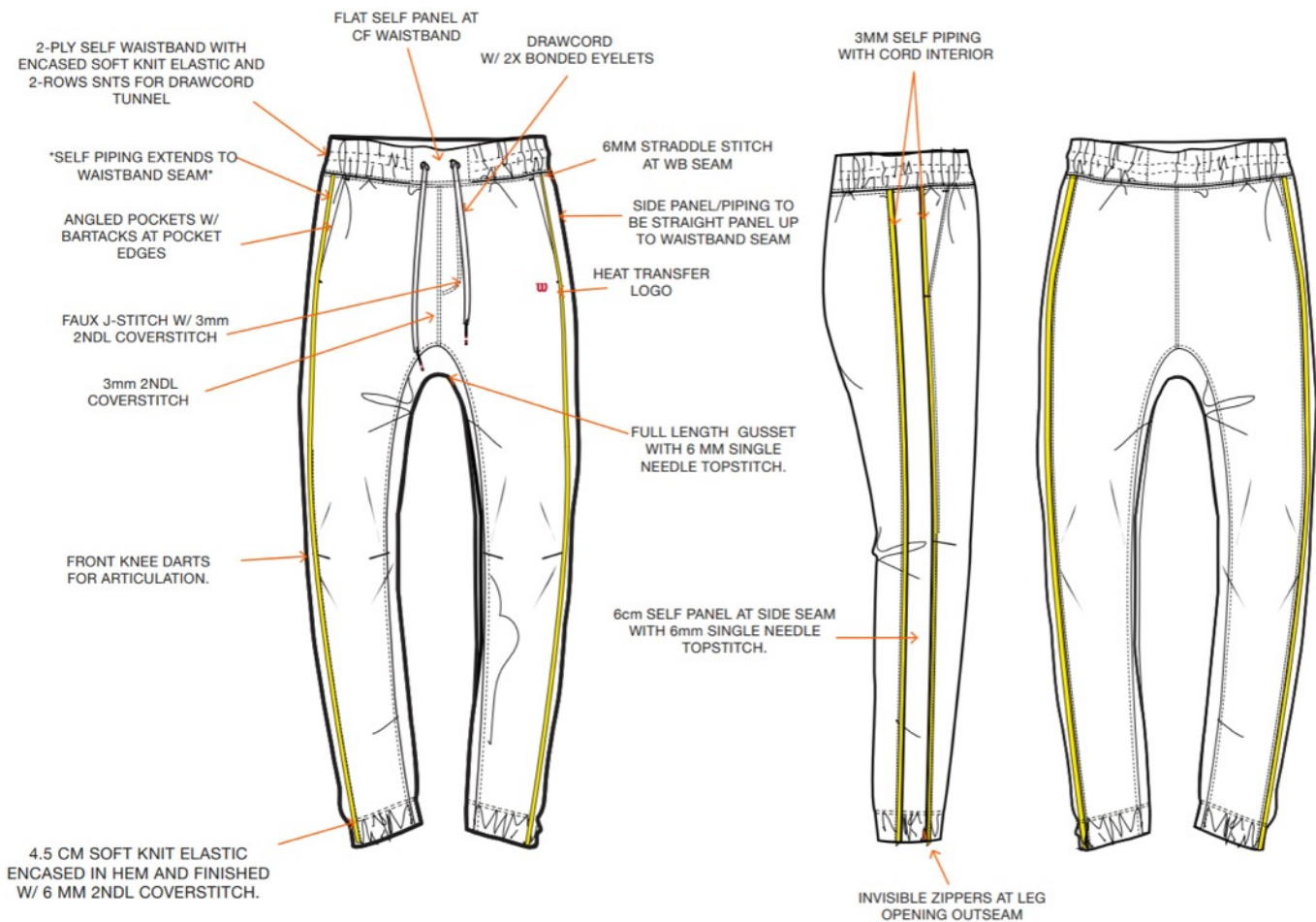
Women's	POINT OF MEASUREMENT	TARGET SPECS (S)
	WAIST @ TOP EDGE	58
	WAIST @ SEAM	66
	WAIST MINIMUM STRETCH	90
	WAISTBAND HEIGHT @ CB	11
	HIP WIDTH (3 PT) @ 19CM FROM WAISTBAND EDGE	74
	THIGH WIDTH- @ 2CM FROM FROM FRONT RISE	47
	KNEE WIDTH- @ 31CM FROM FROM FRONT RISE	31
	LEG OPENING WIDTH	21
	HEM HEIGHT	2
	FRONT RISE INC WB/ EXC GUSSET	22.5
	BK RISE INC WB/EXC GUSSET	32.5
	GUSSET WIDTH	6.5
	LOGO POSITION FM WAIST TOP EDGE @SS	8
	LOGO POSITION FM SS	1
	INSEAM LENGTH- FROM FRONT RISE	62

H124 Wilson Teams – Women’s

Style: W TEAM TIGHT
 Price:
 Fit: Fitted

- Fabric Family: WLSN POWER
- Anti-odor
 - Breathable
 - Stretch
 - Quick-drying





Women's	POINT OF MEASUREMENT	TARGET SPECS (S)
	WAIST/RELAXED	70
	WAIST BAND HEIGHT	4.5
	WAIST OPENING (EXTENDED)	100
	HIP WIDTH 3PT @21CM FM WB TOP	105
	THIGH WIDTH @ 2CM FM CROTCH FOLD	66
	KNEE WIDTH @ 33CM FROM CROTCH	44
	LEG OPENING-RELAXED	27
	LEG OPENING-EXTENDED	36
	HEM HEIGHT	4.5
	OUTSEAM LENGTH INC WB	98

H124 Wilson Teams – Women’s

Style: W TEAM WARM-UP PANT

Price:

Fit: Classic

Fabric Family: WLSN LITE

- Wrinkle release • Moisture-wicking
- Stretch
- Quick-drying





STYLE NAME: M TEAM SEAMLESS CREW
 STYLE NUMBER: WM00282411
 FABRIC: TOP 2 SEAMLESS (POLY / NYLON)
 PRICE: \$29 / \$58
 SPORT: TENNIS



STYLE NAME: M TEAM PIQUE POLO
 STYLE NUMBER: WM00283411
 FABRIC: COTTON LYCRA PIQUE: W22Q4KN02795
 PRICE:
 SPORT: TENNIS



STYLE NAME: M TEAM WOVEN JACKET COLORBLOCK
 STYLE NUMBER: WM00294411
 FABRIC: W23Q3W002285 EVEREST POLY
 PRICE: \$118
 SPORT: TENNIS
 STATUS: PULLTHRU



STYLE NAME: M TEAM PERFORMANCE LASER CUT HAT
 STYLE NUMBER: WU00038411
 FABRIC: TBD
 PRICE: \$29 / \$58
 SPORT: TENNIS



STYLE NAME: M TEAM SEAMLESS POLO 2.0
 STYLE NUMBER: WM00286411
 FABRIC: TOP 2 SEAMLESS (POLY / NYLON)
 SPORT: TENNIS
 PRICE: \$39 / \$78



STYLE NAME: M TEAM WOVEN JOGGER
 STYLE NUMBER: WM00289411
 FABRIC: W23Q3W002285 EVEREST POLY
 PRICE: \$118
 SPORT: TENNIS



STYLE NAME: M TEAM SHORT 7"
 STYLE NUMBER: WM00287411
 FABRIC: W21Q3W000495 HEAVY WEIGHT REC POLY
 PRICE: \$58
 SPORT: TENNIS
 STATUS: PULLTHRU

H124 Wilson Teams – Assortment

Men's Whiteboard



INFRARED*
 PANTONE: 17-1664 TCX
 RD002 / RDB



CARDINAL*
 PANTONE: 19-1934 TCX
 RD010 / RDJ



ROYAL BLUE*
 PANTONE: 19-3952 TCX
 DB015 / DBO



*CLASSIC NAVY
 PANTONE: 19-3923 TCX
 DB003 / DBC



*COURTSIDE GREEN
 PANTONE: 18-5633 TCX
 GN001 / GNA



BRIGHT WHITE*
 PANTONE: 11-0601 TCX
 WT001 / WTA



MEDIUM GRAY HEATHER*
 MG003 / MGC



*BLACK
 PANTONE: 19-3911 TCX
 BK001 / BKA



STYLE NAME: M UNISEX TEAM GRAPHIC TEE
 STYLE NUMBER: WM00290411
 FABRIC: KN03485 ORGANIC COTTON POLY (DGC)
 PRICE: \$19 / \$38



STYLE NAME: M UNISEX TEAM ZIP HOODIE
 STYLE NUMBER: WM0291411
 FABRIC: W24Q1KN03475 COTTON POLY FRENCH TERRY
 PRICE: \$44 / \$88



STYLE NAME: M TEAM JOGGER
 STYLE NUMBER: WM00292411
 FABRIC: W24Q1KN03475 COTTON POLY FRENCH TERRY
 PRICE: \$39 / \$78

H124 Wilson Teams – Assortment

Men's Whiteboard



INFRARED*
 PANTONE: 17-1664 TCX
 RD002 / RDB



CARDINAL*
 PANTONE: 19-1934 TCX
 RD010 / RDJ



ROYAL BLUE*
 PANTONE: 19-3952 TCX
 DB015 / DBO



*CLASSIC NAVY
 PANTONE: 19-3923 TCX
 DB003 / DBC



*COURTSIDE GREEN
 PANTONE: 18-5633 TCX
 GN001 / GNA



BRIGHT WHITE*
 PANTONE: 11-0601 TCX
 WT001 / WTA



MEDIUM GRAY HEATHER*
 MG003 / MGC



*BLACK
 PANTONE: 19-3911 TCX
 BK001 / BKA



STYLE NAME: YB YOUTH SEAMLESS CREW
 STYLE NUMBER: WYB000411
 FABRIC: TOP 2 SEAMLESS (POLY / NYLON)
 PRICE: \$29 / \$58
 SPORT: TENNIS



STYLE NAME: YB YOUTH UNISEX GRAPHIC TEE
 STYLE NUMBER: WYB0003411
 FABRIC: KN03485 ORGANIC COTTON POLY (DGC)
 PRICE: \$19 / \$38



STYLE NAME: YB YOUTH UNISEX TEAM ZIP HOODIE
 STYLE NUMBER: WYB0004411
 FABRIC: W24Q1KN03475 COTTON POLY FRENCH TERRY
 PRICE: \$44 / \$88



STYLE NAME: YB YOUTH TEAM SEAMLESS POLO 2.0
 STYLE NUMBER: WYB0001411
 FABRIC: TOP 2 SEAMLESS (POLY / NYLON)
 SPORT: TENNIS
 PRICE: \$39 / \$78



STYLE NAME: YB YOUTH UNISEX TEAM JOGGER
 STYLE NUMBER: WYB0005411
 FABRIC: W24Q1KN03475 COTTON POLY FRENCH TERRY
 PRICE: \$39 / \$78



STYLE NAME: YB YOUTH TEAM SHORT 5" INSEAM
 STYLE NUMBER: WYB0002411
 FABRIC: W21Q3W000495 HEAVY WEIGHT REC POLY
 PRICE: \$58
 SPORT: TENNIS
 STATUS: PULLTHRU

H124 Wilson Teams – Assortment

Boy's Whiteboard



INFRARED*
 PANTONE: 17-1664 TCX
 RD002 / RDB



CARDINAL*
 PANTONE: 19-1934 TCX
 RD010 / RDJ



ROYAL BLUE*
 PANTONE: 19-3952 TCX
 DB015 / DBO



*CLASSIC NAVY
 PANTONE: 19-3923 TCX
 DB003 / DBC



*COURTSIDE GREEN
 PANTONE: 18-5633 TCX
 GN001 / GNA



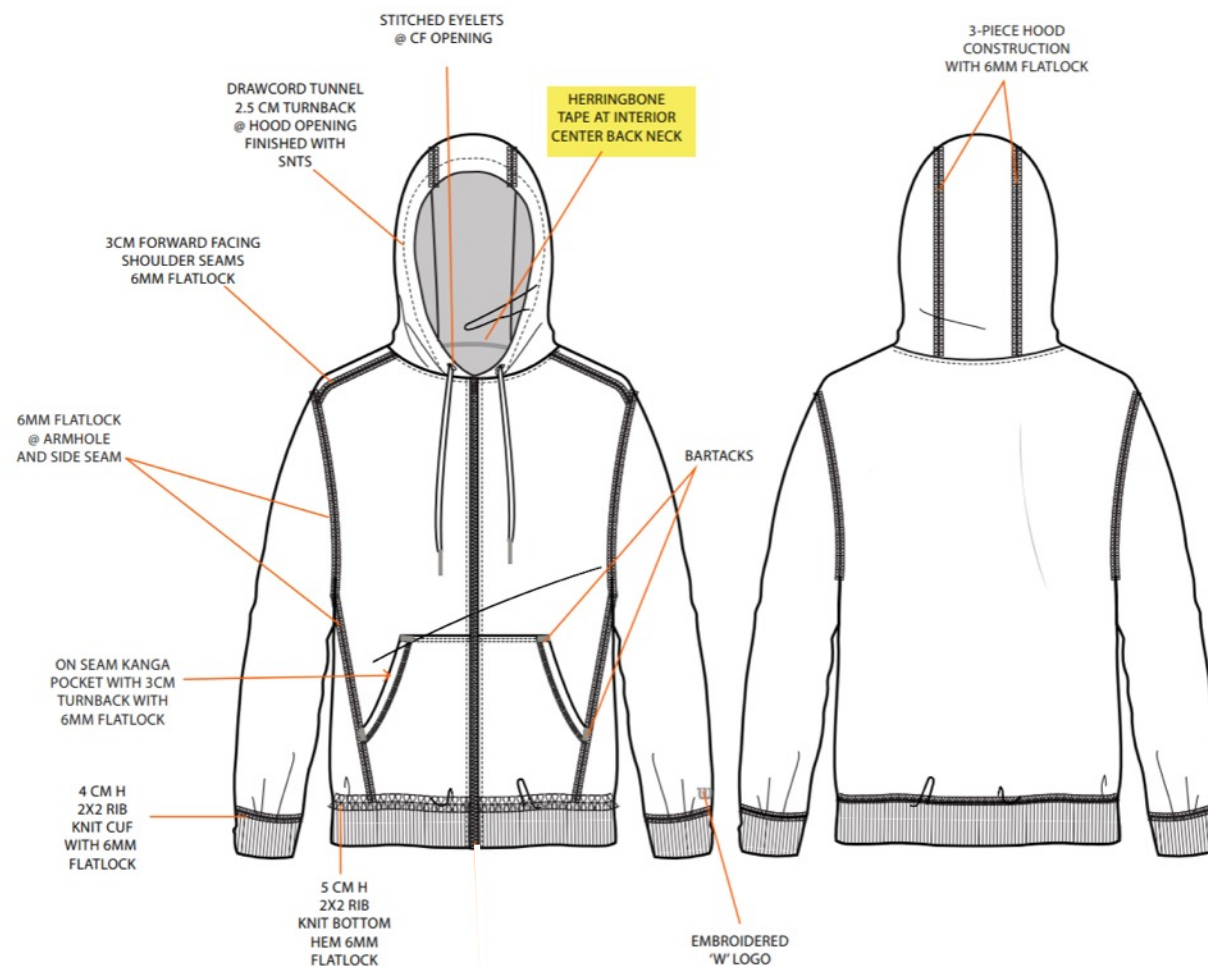
BRIGHT WHITE*
 PANTONE: 11-0601 TCX
 WT001 / WTA



MEDIUM GRAY HEATHER*
 MG003 / MGC



*BLACK
 PANTONE: 19-3911 TCX
 BK001 / BKA



Adult's	POINT OF MEASUREMENT	TARGET SPECS (S)
	BACK BODY LENGTH	69
	FRONT BODY LENGTH	69.5
	SHOULDER SLOPE	6
	SHOULDER WIDTH	47.5
	CHEST (2cm under armhole)	112
	SWEEP/ HEM STRAIGHT- EXTENDED	108
	SWEEP/ HEM STRAIGHT- RELAXED	96
	BOTTOM HEM HEIGHT	6.5
	SLEEVE LENGTH (incl. opening)	68.5
	ARMHOLE STRAIGHT_ FM SEAM TO FOLD	26
	ARM/ BICEPT WIDTH (2cm under armhole)	51
	SLEEVE OPENING @ SEAM	25

Youth's	POINT OF MEASUREMENT	TARGET SPECS (S)
	BACK BODY LENGTH	59
	FRONT BODY LENGTH	59
	SHOULDER SLOPE	3
	SHOULDER WIDTH	39.5
	CHEST (2cm under armhole)	91.5
	SWEEP/ HEM STRAIGHT- EXTENDED	87
	SWEEP/ HEM STRAIGHT- RELAXED	84
	BOTTOM HEM HEIGHT	6.5
	SLEEVE LENGTH FROM SHOULDER (incl. opening)	54
	ARMHOLE DROP FROM HPS	22
	ARM/ BICEPT WIDTH (2cm under armhole)	37
	SLEEVE OPENING @ SEAM	20.5

H124 Wilson Teams – Unisex and Youth

Style: M UNISEX TEAM HOODIE

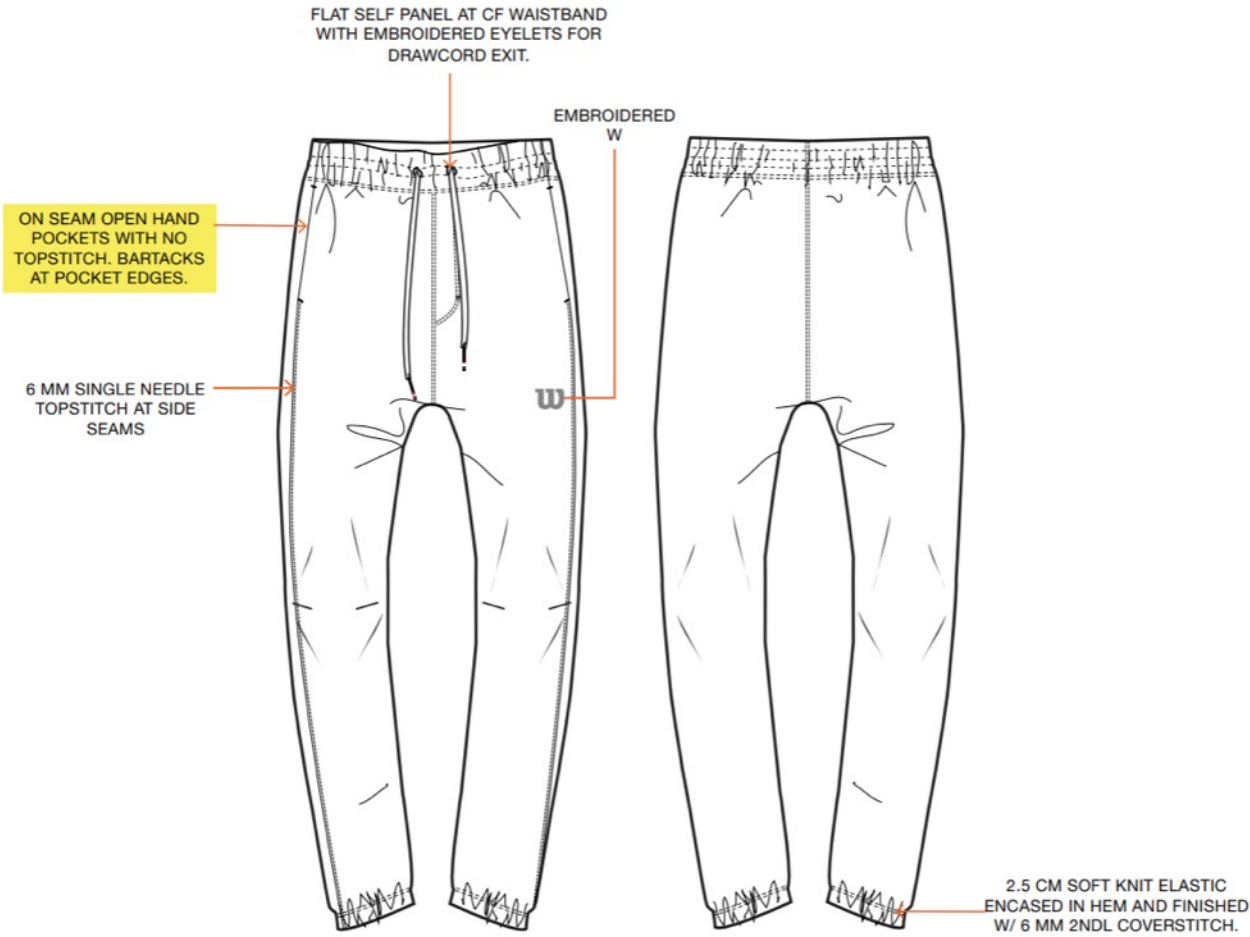
Price:

Fit: Classic

Fabric Family: WLSN TECH

- Anti-odor
- Quick-drying
- Breathable





Adult's	POINT OF MEASUREMENT	TARGET SPECS (M)
	WAIST- RELAXED @TOP	76
	WAIST- RELAXED @ WB SEAM	96
	WB HEIGHT @CF	5
	HIP 3PT @21CM from TOP of WB	111
	THIGH (2cm from crotch fold)	67
	KNEE WIDTH (33 cm from crotch)	42
	LEG OPENING @EXTENDED	36
	LEG OPENING @EDGE	27
	HEM HEIGHT	2.5
	INSEAM	77

Youth's	POINT OF MEASUREMENT	TARGET SPECS (M)
	WAIST- RELAXED @TOP	63.5
	WAIST- RELAXED @ WB SEAM	81.3
	WB HEIGHT @CF	4.5
	HIP 3PT @6 CM from CROTCH SEAM	87.5
	THIGH (2cm from crotch seam)	51
	KNEE (@HALF OF INSEAM)	
	LEG OPENING @SEAM EXTENDED	30.5
	LEG OPENING @EDGE	20.3
	HEM HEIGHT	3
	INSEAM	63.5

H124 Wilson Teams – Unisex and Youth

Style: M TEAM JOGGER

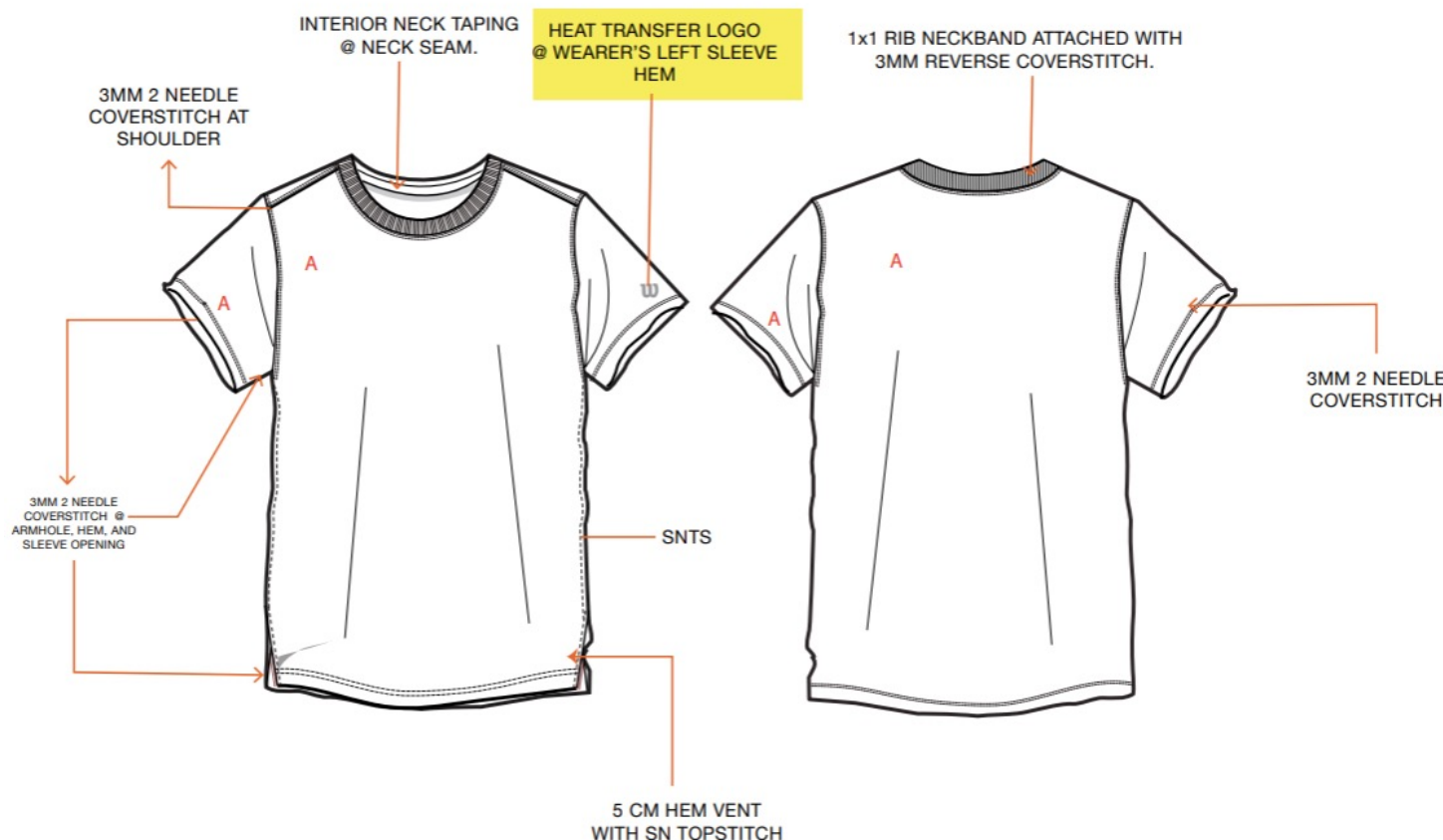
Price:

Fit: Classic

Fabric Family: WLSN TECH

- Anti-odor
- Quick-drying
- Breathable





Adult's	POINT OF MEASUREMENT	TARGET SPECS (M)
	BODY LENGTH TO SWEEP LINE	72
	BODY LENGTH TO CENTER	72
	SHOULDER WIDTH	47
	CHEST (2cm under armhole)	106
	SWEEP/ HEM STRAIGHT	104
	BOTTOM HEM HEIGHT	2
	SLEEVE LENGTH (incl. opening)	21
	ARMHOLE STRAIGHT_ FM SEAM TO FOLD	21.5
	AH DROP FROM HPS	26
	ARM/ BICEPT WIDTH (2cm under armhole)	41
	SLEEVE OPENING	35

Youth's	POINT OF MEASUREMENT	TARGET SPECS (M)
	BODY LENGTH TO CENTER	61
	SHOULDER WIDTH	34.3
	ACROSS FRONT @ HALF AH	31.8
	ACROSS BACK @ HALF AH	33
	CHEST (2cm under armhole)	83.5
	SWEEP/ HEM STRAIGHT	82.5
	BOTTOM HEM HEIGHT	2
	SLEEVE LENGTH FROM CB NECK	34.3
	ARMHOLE STRAIGHT_ FM SEAM TO FOLD	
	AH DROP FROM HPS	19
	ARM/ BICEPT WIDTH (2cm under armhole)	
	SLEEVE OPENING	28

H124 Wilson Teams – Unisex and Youth

Style: M UNISEX TEAM GRAPHIC TEE

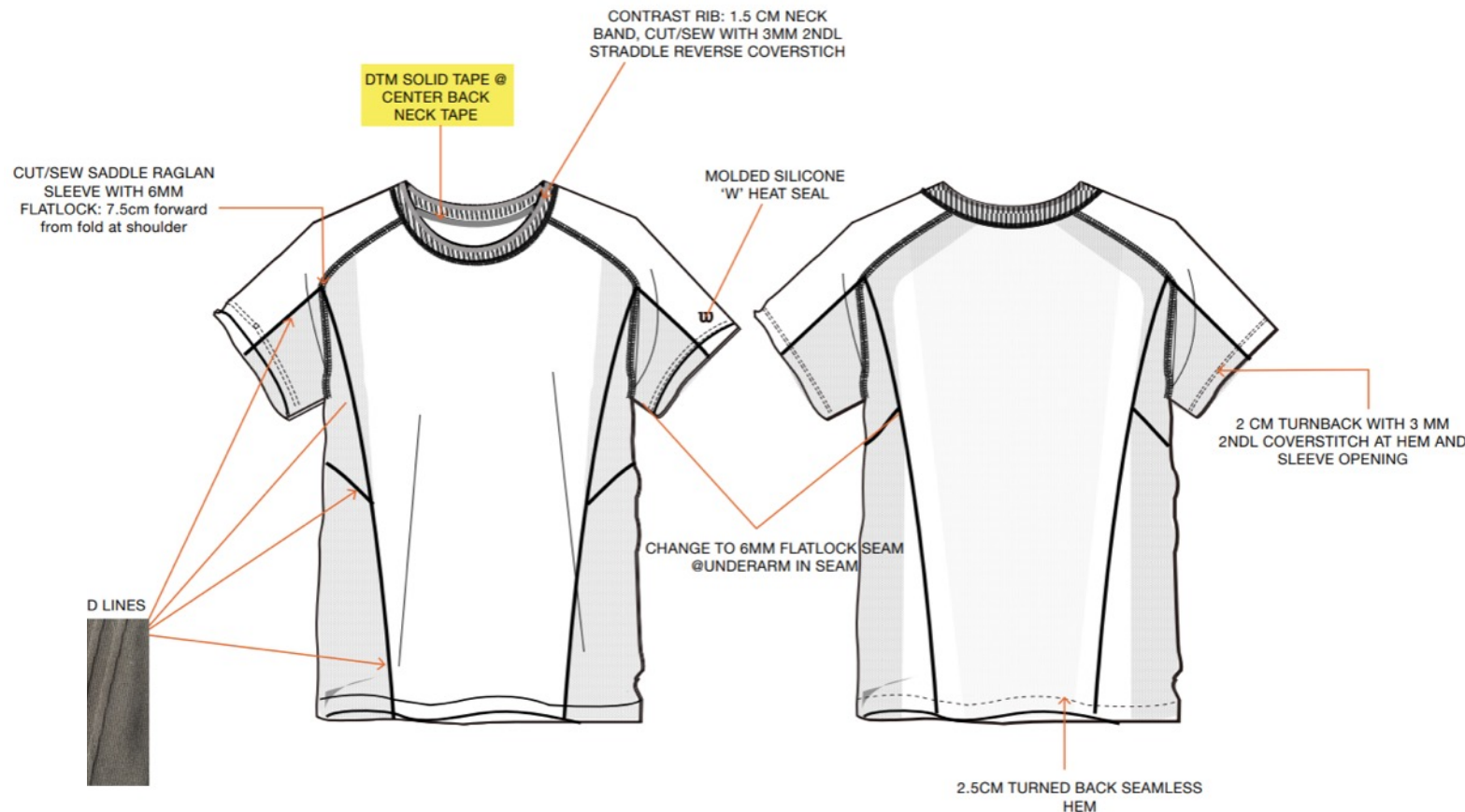
Price:

Fit: Classic

Fabric Family: WLSN TECH

- Anti-odor
- Stretch
- Quick-drying
- Breathable





Men's	POINT OF MEASUREMENT	TARGET SPECS (M)
	BACK BODY LENGTH	72
	FRONT RAGLAN SADDLE WITH 14 CM FROM HPS (FOLD)	32.5
	BACK RAGLAN SADDLE WITH 14 CM FROM HPS (FOLD)	38
	CHEST (2cm under armhole)	98
	SWEEP WIDTH	100
	HEM	2.5
	SLEEVE LENGTH (from CB NECK- 3pt raglan)	42.5
	AH DROP FROM HPS	27
	ARM / BICEP WIDTH (2cm under armhole)	36
	FRONT RAGLAN SEAM LENGTH- STRAIGHT	26
	BACK RAGLAN SEAM LENGTH- STRAIGHT	31.5
	SLEEVE OPENING	32

Boy's	POINT OF MEASUREMENT	TARGET SPECS (M)
	BODY LENGTH TO CENTER	61
	CHEST (2cm under armhole)	83.5
	SWEEP/ HEM STRAIGHT	82.5
	BOTTOM HEM HEIGHT	2
	SLEEVE LENGTH FROM CB NECK	34.3
	AH DROP FROM HPS	19
	SLEEVE OPENING	28

H124 Wilson Teams – Men's and Boy's

Style: M TEAM SEAMLESS CREW

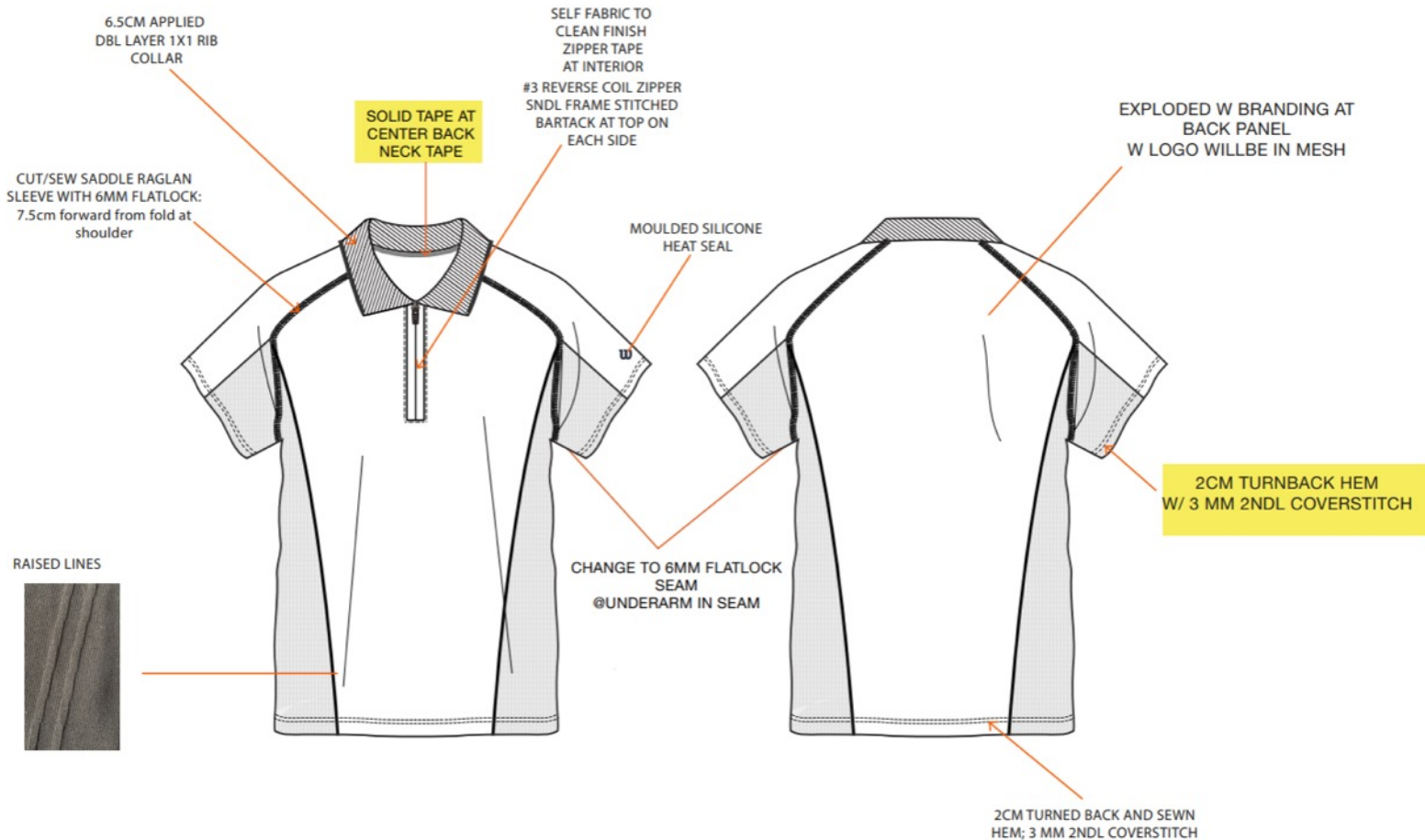
Price:

Fit: Athletic

Fabric Family: WLSN PRO

- Anti-odor
- Compressive
- Quick-drying
- Ventilation





Men's	POINT OF MEASUREMENT	TARGET SPECS (M)
	BACK BODY LENGTH	72
	FRONT RAGLAN SADDLE WITH 14 CM FROM HPS (FOLD)	32.5
	BACK RAGLAN SADDLE WITH 14 CM FROM HPS (FOLD)	38
	CHEST (2cm under armhole)	98
	SWEEP WIDTH	100
	HEM	2.5
	SLEEVE LENGTH (from CB NECK- 3pt raglan)	42.5
	AH DROP FROM HPS	27
	ARM / BICEP WIDTH (2cm under armhole)	36
	FRONT RAGLAN SEAM LENGTH- STRAIGHT	26
	BACK RAGLAN SEAM LENGTH- STRAIGHT	31.5
	SLEEVE OPENING	32

Boy's	POINT OF MEASUREMENT	TARGET SPECS (M)
	BODY LENGTH TO CENTER	61
	CHEST (2cm under armhole)	83.5
	SWEEP/ HEM STRAIGHT	82.5
	BOTTOM HEM HEIGHT	2
	SLEEVE LENGTH FROM CB NECK	34.3
	ARMHOLE STRAIGHT_ FM SEAM TO FOLD	
	AH DROP FROM HPS	19
	ARM/ BICEPT WIDTH (2cm under armhole)	
	SLEEVE OPENING	27

H124 Wilson Teams – Men's and Boy's

Style: M TEAM SEAMLESS POLO 2.0

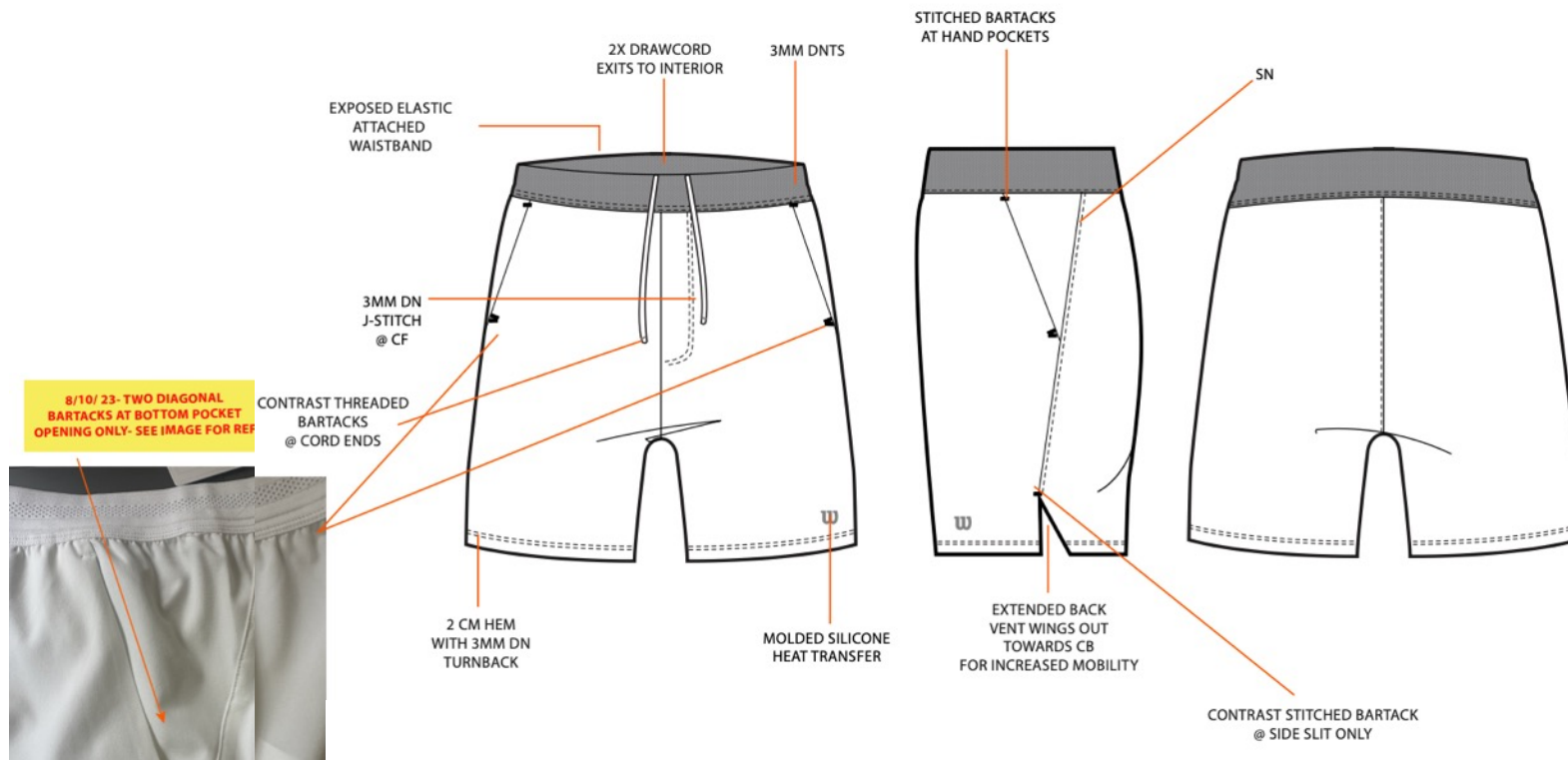
Price:

Fit: Athletic

Fabric Family: WLSN PRO

- Anti-odor
- Compressive
- Quick-drying
- Ventalation





Men's	POINT OF MEASUREMENT	TARGET SPECS (M)
	BACK BODY LENGTH	72
	FRONT RAGLAN SADDLE WITH 14 CM FROM HPS (FOLD)	32.5
	BACK RAGLAN SADDLE WITH 14 CM FROM HPS (FOLD)	38
	CHEST (2cm under armhole)	98
	SWEEP WIDTH	100
	HEM	2.5
	SLEEVE LENGTH (from CB NECK- 3pt raglan)	42.5
	AH DROP FROM HPS	27
	ARM / BICEP WIDTH (2cm under armhole)	36
	FRONT RAGLAN SEAM LENGTH- STRAIGHT	26
	BACK RAGLAN SEAM LENGTH- STRAIGHT	31.5
	SLEEVE OPENING	32

Boy's	POINT OF MEASUREMENT TEAM SHORT – 5"	TARGET SPECS (M)
	WAIST- RELAXED @TOP	63.5
	WAIST- RELAXED @ WB SEAM (EXTENDED)	83
	WB HEIGHT @CF	3.5
	HIP 3PT @21CM from TOP of WB	85
	THIGH (2cm from crotch fold)	57
	LEG OPENING @ TOP OF SIDE VENT	48
	INSEAM	17.5

H124 Wilson Teams – Men's and Boy's

Style: M TEAM SHORT – 7"

Price:

Fit: Athletic

Fabric Family: WLSN PRO

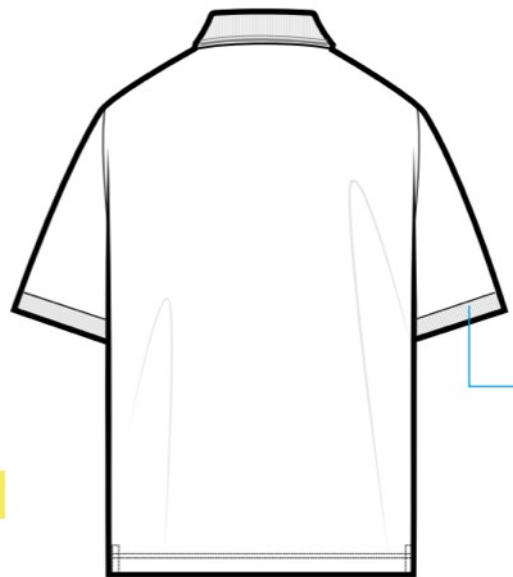
- Stretch
- Quick-drying
- Breathable
- Moisture-wicking



1x1 FLAT KNIT RIB AT COLLAR WITH FASHIONED SHAPING AND ENGINEERED STRIPES AT CB NECK

SHOULDER SEAM FORWARD 3 CM FORWARD WITH 2MM STRADDLE COVERSTITCH

3 BUTTON CF CLOSURE W/ BOX STITCH AT EDGE STRIPE TAPE AT UNDER PLACKET



EMBROIDERED BRANDING

2CM 1X1 SOLID RIB CUFF

Men's	POINT OF MEASUREMENT	TARGET SPECS (M)
	BACK BODY LENGTH	75
	FRONT BODY LENGTH	73
	SHOULDER WIDTH	47
	CHEST (2cm under armhole)	110
	SWEEP/ HEM STRAIGHT	109
	BOTTOM HEM HEIGHT	2.5
	SLEEVE LENGTH (incl. opening)	23
	ARMHOLE STRAIGHT_ SEAM TO SEAM	22
	ARM/ BICEPT WIDTH (2cm under armhole)	36
	SLEEVE OPENING	34

H124 Wilson Teams – Men's

Style: M TEAM PIQUE POLO

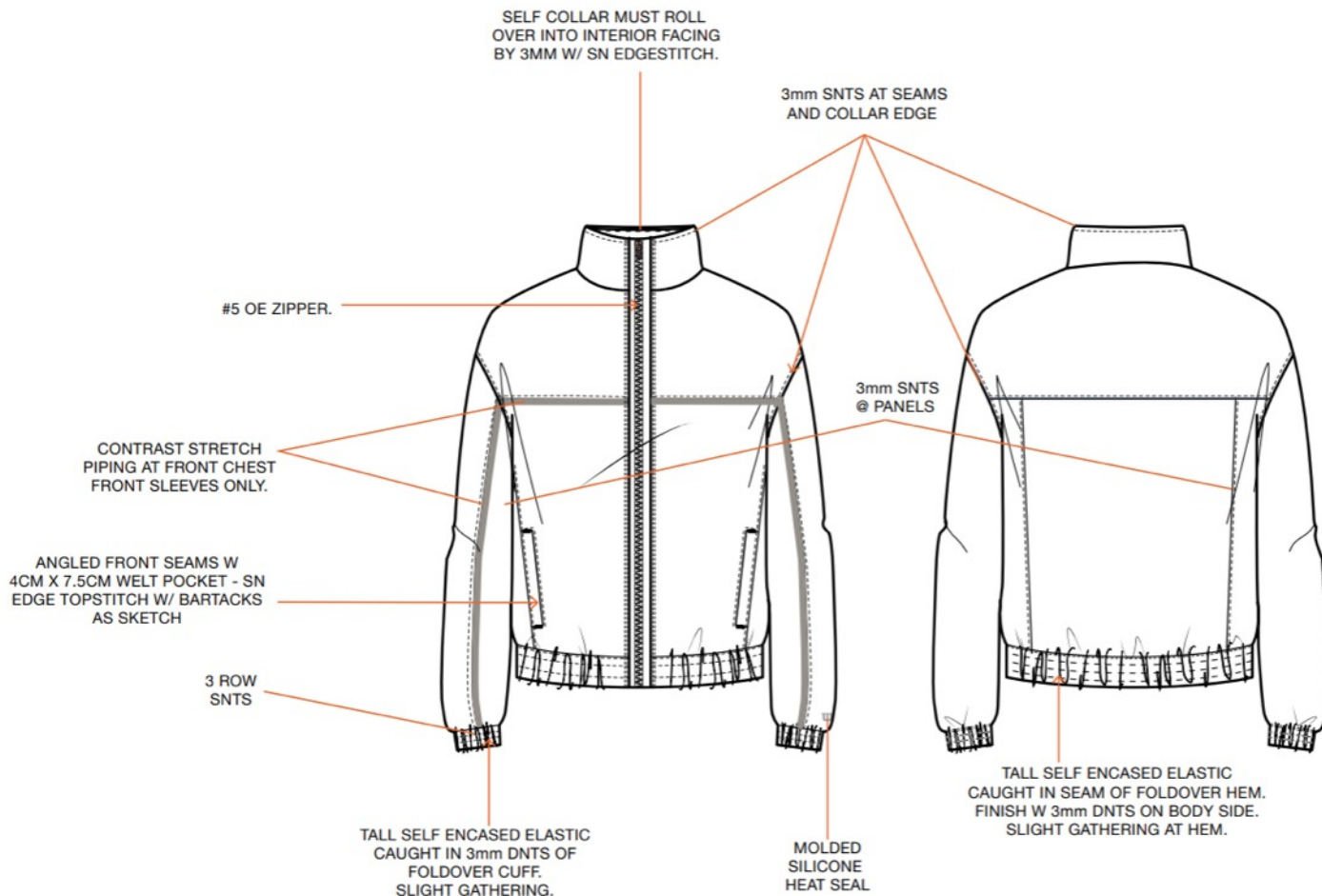
Price:

Fit: Classic

Fabric Family: WLSN TECH

- Anti-odor
- Quick-drying
- Breathable





Men's	POINT OF MEASUREMENT	TARGET SPECS (M)
	BODY LENGTH @HPS	70.5
	ACROSS SHOULDER	49
	CHEST (2cm under armhole)	114
	SWEEP/ HEM STRAIGHT ALONG EDGE RELAXED	110.5
	SWEEP EXTENDED	114
	WAISTBAND HEIGHT	5
	SLEEVE LENGTH (incl. cuff)	69.5
	BICEP WIDTH (2cm under armhole)	42
	SLEEVE OPENING - ALONG EDGE EXTENDED	26

H124 Wilson Teams – Men's

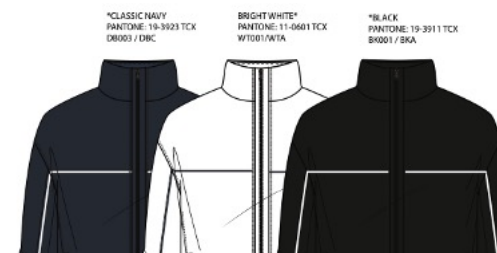
Style: M TEAM WOVEN JACKET COLORBLOCK

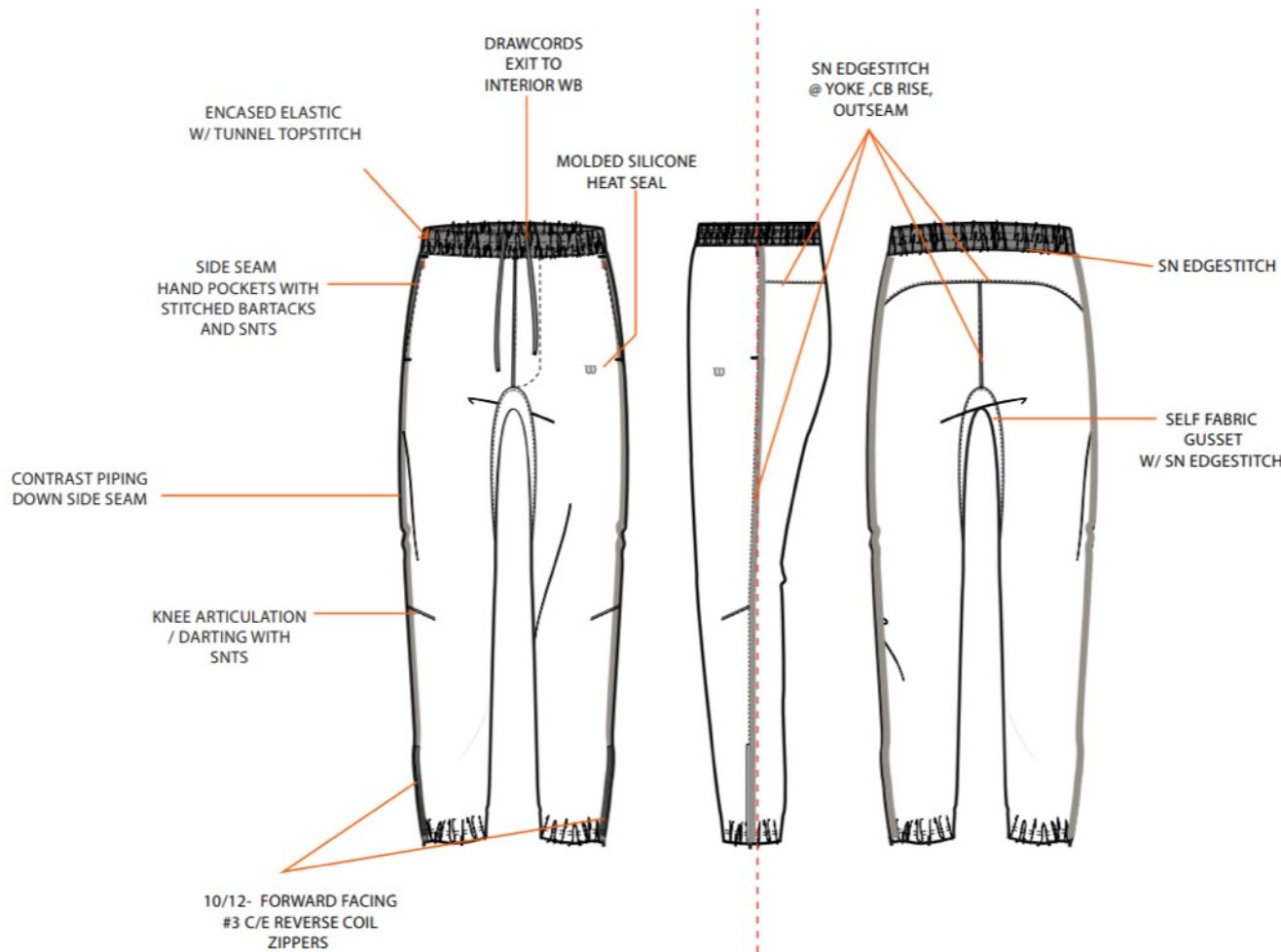
Price:

Fit: Classic

Fabric Family: WLSN TECH

- Stretch
- Quick-drying
- Water Repellent





Men's	POINT OF MEASUREMENT	TARGET SPECS (M)
	WAIST- RELAXED @TOP	76
	WAIST- RELAXED @ WB SEAM	92
	WB HEIGHT @CF	5
	HIP 3PT @21CM from TOP of WB	107
	THIGH (2cm from crotch seam)	66
	KNEE (33 cm from crotch seam)	46
	LEG OPENING @SEAM EXTENDED	34

H124 Wilson Teams – Men's

Style: M TEAM PANT (WOVEN JOGGER)

Price:

Fit: Athletic

Fabric Family: WLSN TECH

- Stretch
- Quick-drying
- Water Repellent



APPENDIX

MOST TECHNICAL TO THE MOST VERSATILE



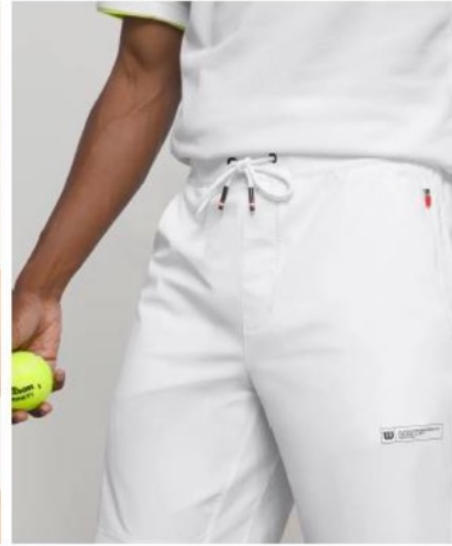
• WLSN PRO (SEAMLESS)

LOW ENVIRONMENTAL IMPACT: LITTLE OR NO WASTE
SEAMLESSLY ENGINEERED TECHNOLOGY
ZONED FOR PERFORMANCE AND COMFORT
ANTI-ODOR & QUICK DRYING
REDUCED SEAMS TO PREVENT CHAFING
SEAMLESSLY MOVES WITH THE BODY



• WLSN LUX

ULTRA LIGHT
WICKING + QUICK DRYING
4-WAY STRETCH
SOFT BRUSHED/PEACHED HAND
UV PROTECTION
RIB, JERSEY + PIQUE VERSIONS



• WLSN MOVE

4-WAY STRETCH
WICKING + ULTRA QUICK DRYING
UV PROTECTION
ANTI - CHLORINE, SUNSCREEN, SAND + SALT
MID-WEIGHT
COOLING
RECYCLED NYLON
AMAZING SHAPE RETENTION
WRINKLE RELEASE
DRAPES LIKE A WOVEN



• WLSN POWER

ULTRA SMOOTH + SOFT
COMPRESSIVE STRETCH
WICKING + QUICK DRYING
4-WAY STRETCH
BREATHABLE



• WLSN TECH COTTON

SUPERNATURAL COTTON BASED
ANTI-ODOR
SHAPE RETENTION
DRIES FASTER THAN STANDARD COTTON
ULTRA SOFT
BREATHABLE

Wilson Terminology – All Seasons

Fabric Families – Features and Benefits

Utilize the unique fabric family traits as an additional sales tool

LIGHTEST WEIGHT TO THE MOST DURABLE



• **WLSN RETRO ACTIVE**

COTTON HAND
PREMIUM DRAPE - COMPACT KNIT
SHAPE RETENTION
BREATHABLE
ULTRA SOFT
INSPIRED BY NOSTALGIC SPORT REF. FOR TODAY



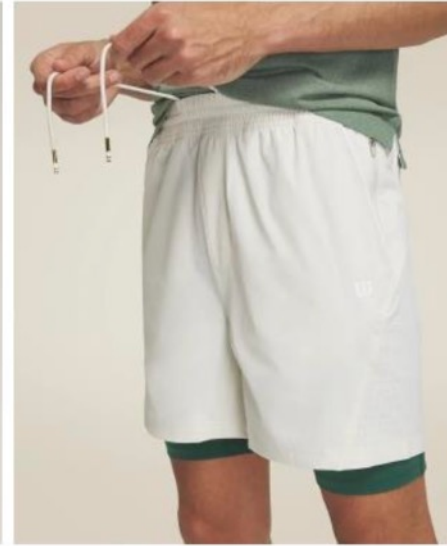
• **WLSN LITE**

LIGHTEST WEIGHT, BARELY THERE
BREATHABLE
STRETCH
SUPER QUICK DRYING
RECYCLED



• **WLSN REC**

LIGHT WEIGHT
COTTON HAND
STRETCH
SUPER QUICK DRYING
WICKING OR DWR OPTIONS
MATTE FINISH



• **WLSN FLEX**

MID-WEIGHT
HI-STRETCH
QUICK DRYING
WICKING OR DWR OPTIONS
WRINKLE RELEASE
DURABLE



• **WLSN TOUR**

MID WEIGHT
COTTON HAND
MOST DURABLE
STRETCH
QUICK DRYING OR DWR
UV PROTECTION
WRINKLE RELEASE
GREAT COVERAGE - HOLDS TAILORING

Wilson Terminology – All Seasons

Fabric Families – Features and Benefits

Utilize the unique fabric family traits as an additional sales tool

**1. BUST**

Measure around the fullest part of the bust.

2. WAIST

Find the narrowest point of the natural waist and measure the full circumference.

3. HIP

Standing with your legs together, measure around the fullest part of your hip.

4. INSEAM

From the inside leg at the groin measure down to the ankle.

WOMEN'S FIT

IN CM	XS	S	M	L	XL
BUST	78 – 81	84 – 87	90 – 92	94 – 97	99 – 102
WAIST	64 – 66	69 – 71	74 – 77	79 – 81	84 – 90
HIP	86 – 90	91 – 94	96 – 102	104 – 110	112 – 117
INSEAM	79	80	81	82	84

GIRL'S FIT

IN CM	XS	S	M	L
CHEST	58 – 61	66 – 69	71 – 76	81 – 86
WAIST	56 – 58	60 – 62	64 – 66	71 – 76
HIP	61 – 64	70 – 72	76 – 81	86 – 91
HEIGHT	116 – 122	124 – 132	135 – 145	147 – 157

Wilson Size and Fit Guide – All Seasons

Women's Sportswear Collection

Note if a men's style comes in an XS that is a great indicator of gender-neutral styling opportunity

**1. CHEST**

Measure around the fullest part of the bust.

2. WAIST

Find the narrowest point of the natural waist and measure the full circumference.

3. INSEAM

From the inside leg at the groin measure down to the ankle.

MEN'S FIT

IN CM	S	M	L	XL	XXL
CHEST	91 - 94	97 - 99	102 - 107	109 - 114	117 - 122
WAIST	77 - 81	84 - 87	90 - 92	94 - 99	102 - 107
HIP	90 - 93	96 - 98	100 - 105	107 - 111	113 - 118
INSEAM	81	82	84	85	86

BOY'S FIT

IN CM	XS	S	M	L	XL
CHEST	58 - 61	66 - 69	69 - 71	77 - 81	84 - 89
WAIST	56 - 59	60 - 62	65 - 67	71 - 73	75 - 77
HIP	61 - 64	70 - 72	74 - 77	81 - 86	89 - 92
HEIGHT	116 - 122	124 - 137	139 - 149	152 - 162	167 - 175

Wilson Size and Fit Guide – All Seasons

Men's Sportswear Collection

Be sure to note the fit classification for the optimal fit by style

A group of five people are on a tennis court. On the left, a woman with long dark hair and a man in white shirts are leaning on a wooden railing, looking towards the right. On the right, three people are sitting on a wooden bench. A woman in a white tennis outfit is in the foreground, holding a tennis racket. Behind her, another woman in a patterned shirt and a man in a white shirt and shorts are also holding tennis rackets. The entire scene is overlaid with a semi-transparent red color. The word "MATCH" is written in large, white, bold, sans-serif capital letters across the middle of the image.

MATCH