

Fabric Requirements

Leftovers from the 44 FQs

2¾ yards Country Confetti Marshmallow

⅝ yard for binding

4½ yards for backing

Cutting Instructions

From assorted FQs cut:

- (68) 2½" squares.

From white fabric cut:

- (14) 3½" x WOF strips. Piece and cut into:
 - (4) 3½" x 68½" **[a]**.
 - (2) 3½" x 58½" **[b]**.
 - (2) 3½" x 78½" **[c]**.
- (5) 2½" x WOF strips. Cut into (68) 2½" squares.

From binding fabric cut:

- (8) 2¼" x WOF strips. Piece for length.

Assembly Instructions

All seams are sewn with a ¼" and pressed open.

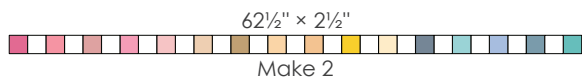
Pieced Borders

Note: Pay attention to the color placement to create a rainbow effect, if desired.

1. For the side pieced borders, join 18 color and 19 white squares into a strip (whites on the ends). Make 2.

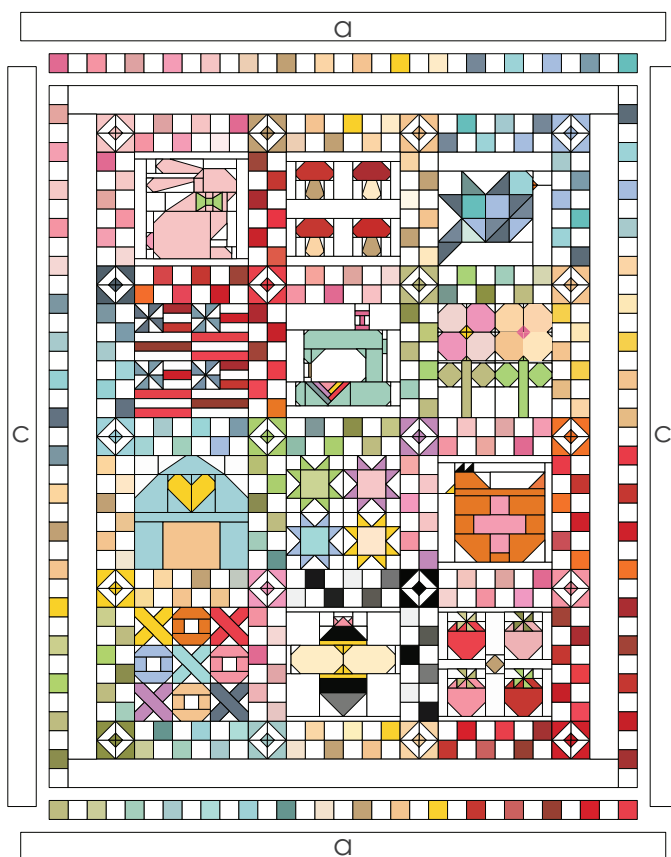
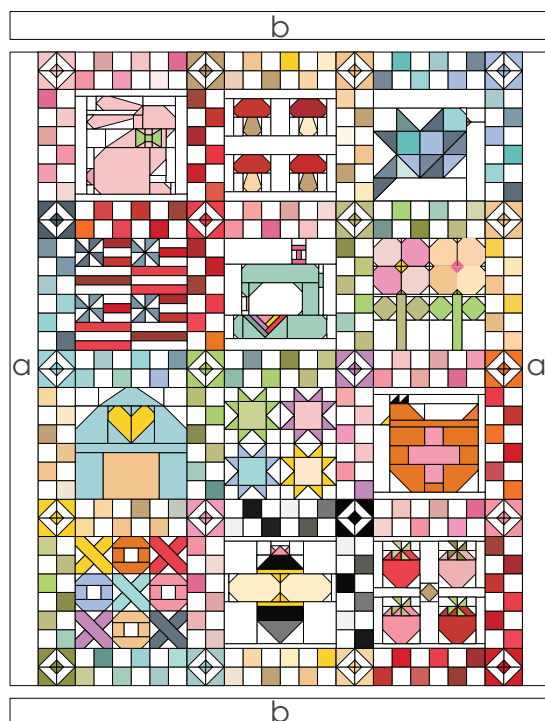


2. For the top/bottom pieced borders, join 16 color and 15 white squares into a strip (colors on the ends). Make 2.



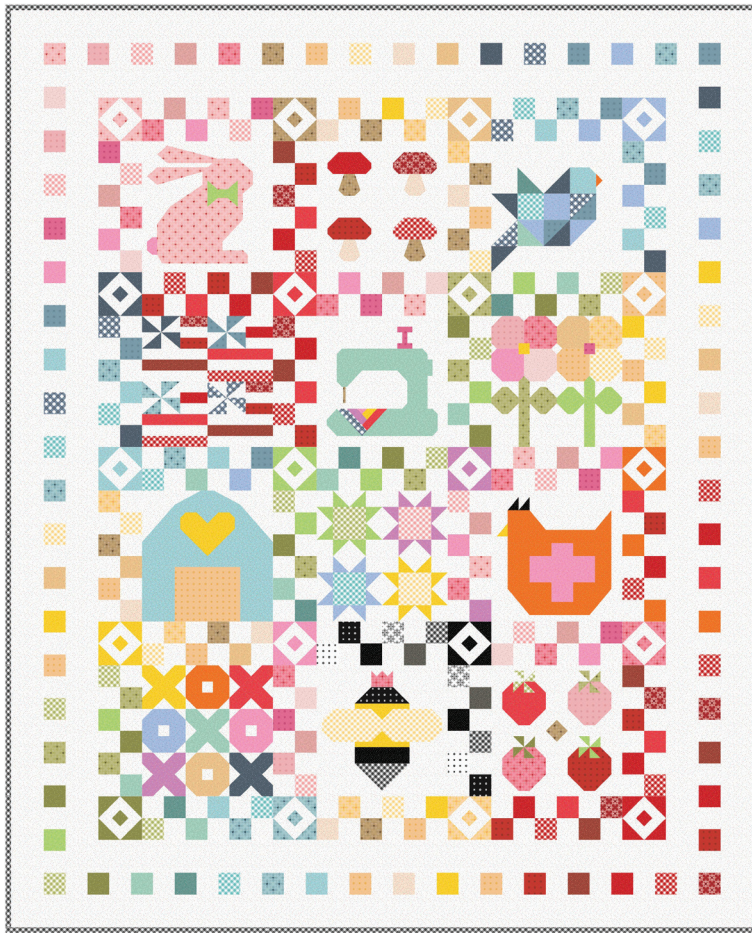
Border Assembly

3. Add 2 [a] and then 2 [b] as shown.
4. Add the side pieced borders, and then the top and bottom pieced borders as shown.
5. Add 2 [c] and then 2 [a] as shown.



6. Quilt as desired.
7. Bind the quilt.





Finished size: 68" x 84"

Farmhouse Favorites Forever Club is a Block of the Month program featuring all of our beautifully coordinating Farmhouse Favorites fabrics.

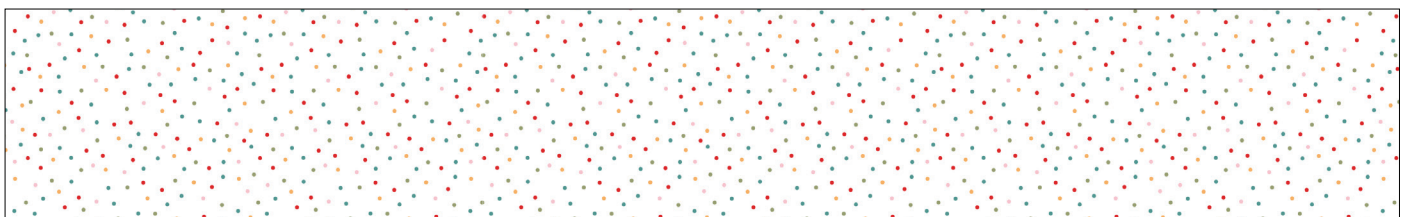
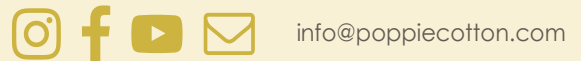


This program includes every print from Country Confetti, Gingham Picnic, Barnyard Bandana, Kiss Hug, and Country Confetti Brights - a total of 44 skus.

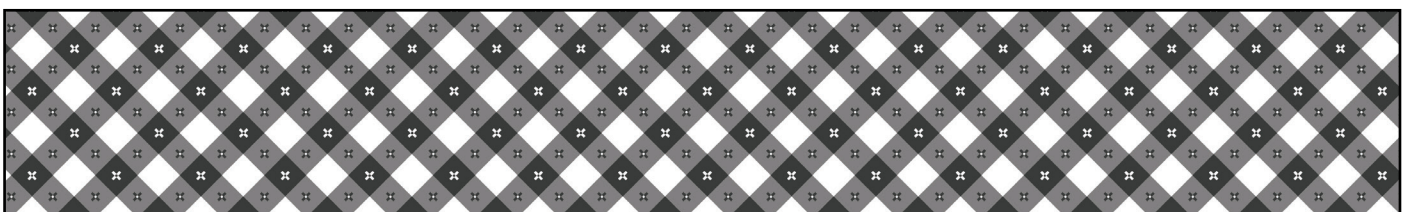
The Country Blessing pattern is exclusive to shops who carry the complete Farmhouse Favorites collection.

A two-bolt-minimum per month purchase is required to maintain active club member status and receive the BOM patterns.

Please email info@poppiecotton.com for more information or call 360-852-8806.



Country Confetti
Marshmallow



Gingham
Playground

