



**I N V E N T A B L E S .**

**X-Carve Pro T-Slot Waste Board  
Upgrade Instructions**

**30894-02**

## What's Included:

Part #	Description	Quantity
30875-46	MDF Wasteboard Quadrants	2
30875-47	MDF Wasteboard Clamp Rests	2
	T-Slot Track	3
	Button Head Screw M5x16	16
	Socket Head Screw M5x16	18
	T-Slot Clamps (T-bolt, clamp, star nut, washer)	4

## Tools Needed

- Torque wrench w/ 4mm hex bit (set to 4.5N\*M)
- 4mm allen key
- 3mm allen key

## Hardware

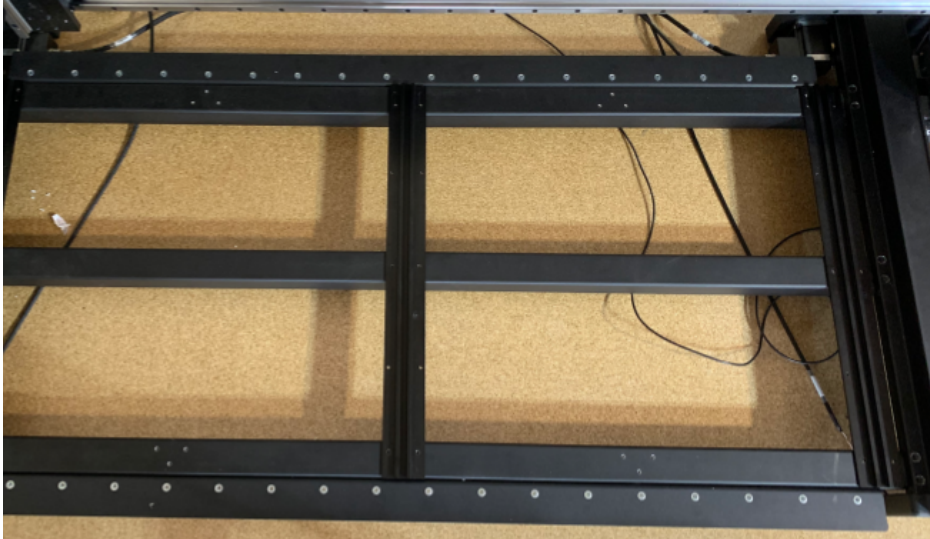
- M5x16 SHCS x 18
- M5x16 BHCS x 16
- T-slot Track x 3
- MDF Clamp Rests x 2
- MDF Quadrants x 2

### 15.1 Remove MDF Wasteboard (if installed)

Using a 4mm allen key, remove 9x M5x16 SHCS. Remove the MDF wasteboard and save for future use or discard.

### 15.1b Attach T-Slot Tracks

Lay out the 3 t-slot tracks across the frame so they run parallel to the Y-axes. Align each t-slot track so the slotted holes are at the rear of the machine, and the screw holes are aligned to the threaded holes in the crossmembers.

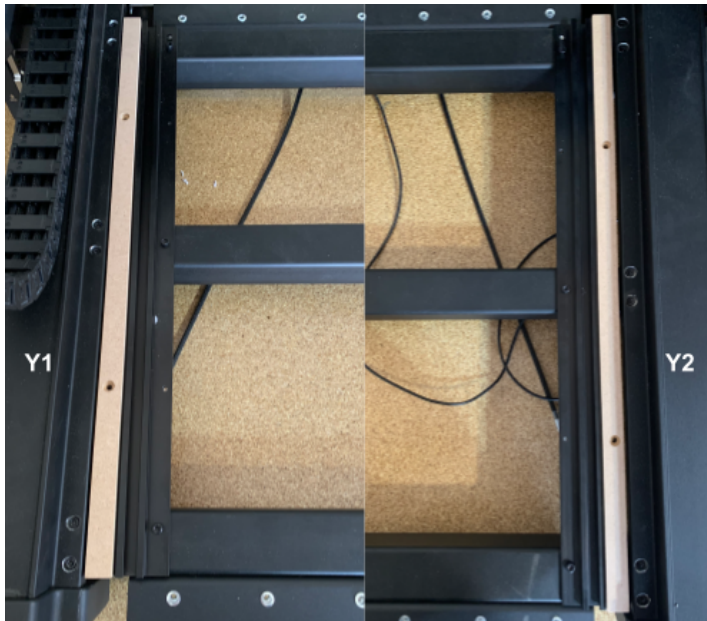


Instal 6 M5x16 SHCS through each t-slot track into the crossmembers and tighten using your torque wrench w/ 4mm hex bit set to 4.5N\*M.

### 15.2b Attach Clamp Rests to Outer T-Slot Tracks

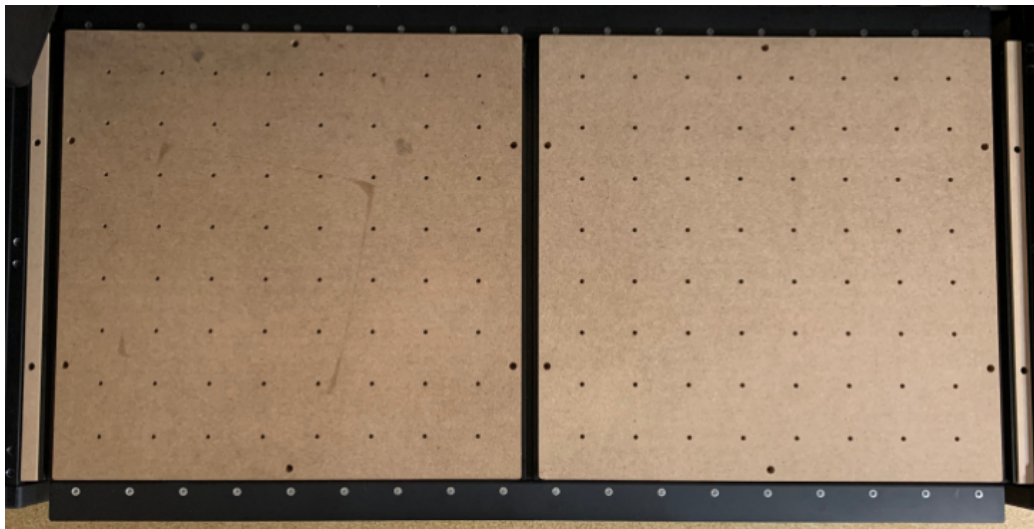
The thin strips of MDF attach to the outside of the Y1 and Y2 t-slot tracks. They allow for clamps to rest on top when securing material to the X-Carve Pro.

Attach each clamp rest to the outside t-slot tracks using 2 M5x16 BHCS and a 3mm allen key (MDF components do not need to be tightened using the torque wrench). The top side of the MDF clamp rests are flat, while the bottoms have pockets cut out to allow it to sit flush with the Y1 and Y2 axis.

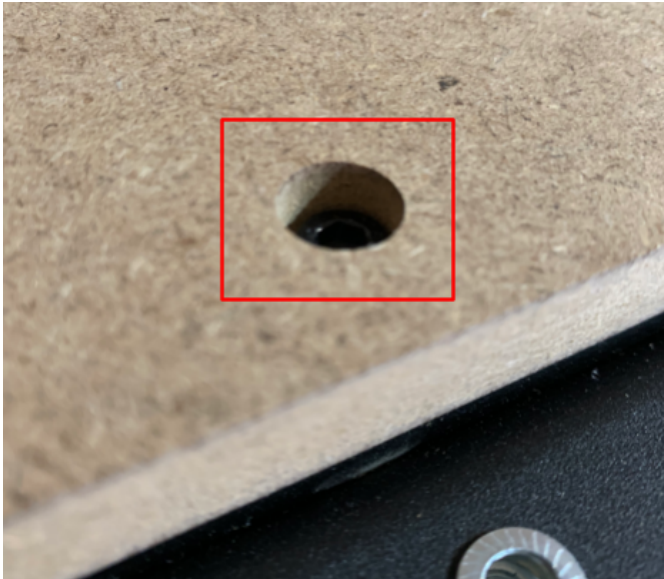


### 15.3b Attach MDF Wasteboards to T-Slot Tracks and X-Carve Pro Frame

Lay the 2 MDF quadrants between the t-slot tracks such that the sides that have 2 mounting holes are along the Y-axes and center t-slot track. Using a 3mm allen key, thread each of the 12 M5x16 BHCS into the t-slot frame to ensure the MDF is properly aligned. Once all screws are threaded, tighten all screws down.



**Note:** Be sure to tighten the screws so they are countersunk from the top of the MDF. This will ensure they are snugly mounted to the X-Carve Pro and allow for the MDF to be planed.



15.4b Plane the wasteboard

[4x2 X-Carve Pro Planing Project](#)

For any questions, please reach out to Inventables Customer Success team  
[help@inventables.com](mailto:help@inventables.com) or call 312-775-7009.