



rom&nd PRODUCTS CATALOGUE

rom&nd Overseas Department

rom&nd

Beauty Holic's Favourite.

A close-up photograph of a woman with dark hair and light skin, looking slightly to the right. She is holding a red lip gloss tube with a clear cap, applying it to her lips. The tube has the text "#06 PURPLE SHOWER" printed on it. She is wearing a purple top and large, ornate earrings with colorful gemstones. The background is a soft, out-of-focus grey.

# PRODUCT INTRODUCTION

Part.1 LIP



JUICY LASTING TINT





01 JUICY OH!



02 RUBY RED



03 SUMMER SCENT



05 PEACH ME



06 FIG FIG



07 JUJUBE



08 APPLE BROWN



09 LITCHI CORAL



10 NUDY PEANUT



11 PINK PUMPKIN



12 CHERRY BOMB



13 EAT DOTORI



14 BERRY SHOT



15 FUNKY MELON



16 CORNI SODA



17 PLUM COKE



18 MULLED PEACH



19 ALMOND ROSE



20 DARK COCONUT



21 DEEP SANGRIA



22 POMELO SKIN



23 NUCADAMIA



24 PEELING ANGDOO



25 BARE GRAPE



**GLASTING WATER TINT**



01 CORAL MIST



02 RED DROP



03 BRICK RIVER



04 VINTAGE OCEAN



05 ROSE SPLASH



06 PURPLE SHOWER



07 PINK VALLEY



08 ROSE STREAM



10 CHIJA BEIGE



11 PUMPKIN BROWN



12 OMIYA RED



13 BERRY VIOLET



## GLASTING WATER GLOSS





00 METEOR TRACK



02 SANHO CRUSH



03 NIGHT MARINE





**ZERO VELVET TINT**



02 JOYFUL



03 PERSIRED



04 BURNT HEART



05 WITTY



06 DEEP SOUL



07 FIZZ



08 ICY



10 FEVER



11 FLARE



12 ANN SHIRLEY



13 BERRY CAKE



14 PECAN TARTE



15 RUSK RUSK



16 BURNY NUDE



17 TOASTY NUDE



18 PETAL TASSEL



19 EARL GREY SHAWL



20 BERRY KNIT



21 VILLAIN VEST



22 GRAIN NUDE



23 VINTAGE TAUPE



24 FADE RED



25 NERD PINK



# MILK TEA VELVET TINT





01 RED TEA



02 CHOCOLATE TEA



03 CINNAMON TEA



04 CARAMEL TEA



ZERO MATTE LIPSTICK



01 DUSTY PINK



02 ALL THAT JAZZ



03 SILHOUETTE



04 BEFORE SUNSET



05 EVENING



06 AWESOME



07 ENVY ME



08 ADORABLE



09 SHELL NUDE



10 PINK SAND



11 SUNLIGHT



12 SOMETHING



13 RED CARPET



14 SWEET P



15 MIDNIGHT



16 DAZZLE RED



17 RED HEAT



18 TANNING RED



19 RED SURFER



20 RED DIVE



Han-all fix mascara  
(long/volume)





L01. Long Black



L02. Long Ash



V01. Volume Black



L03. Long Hazle

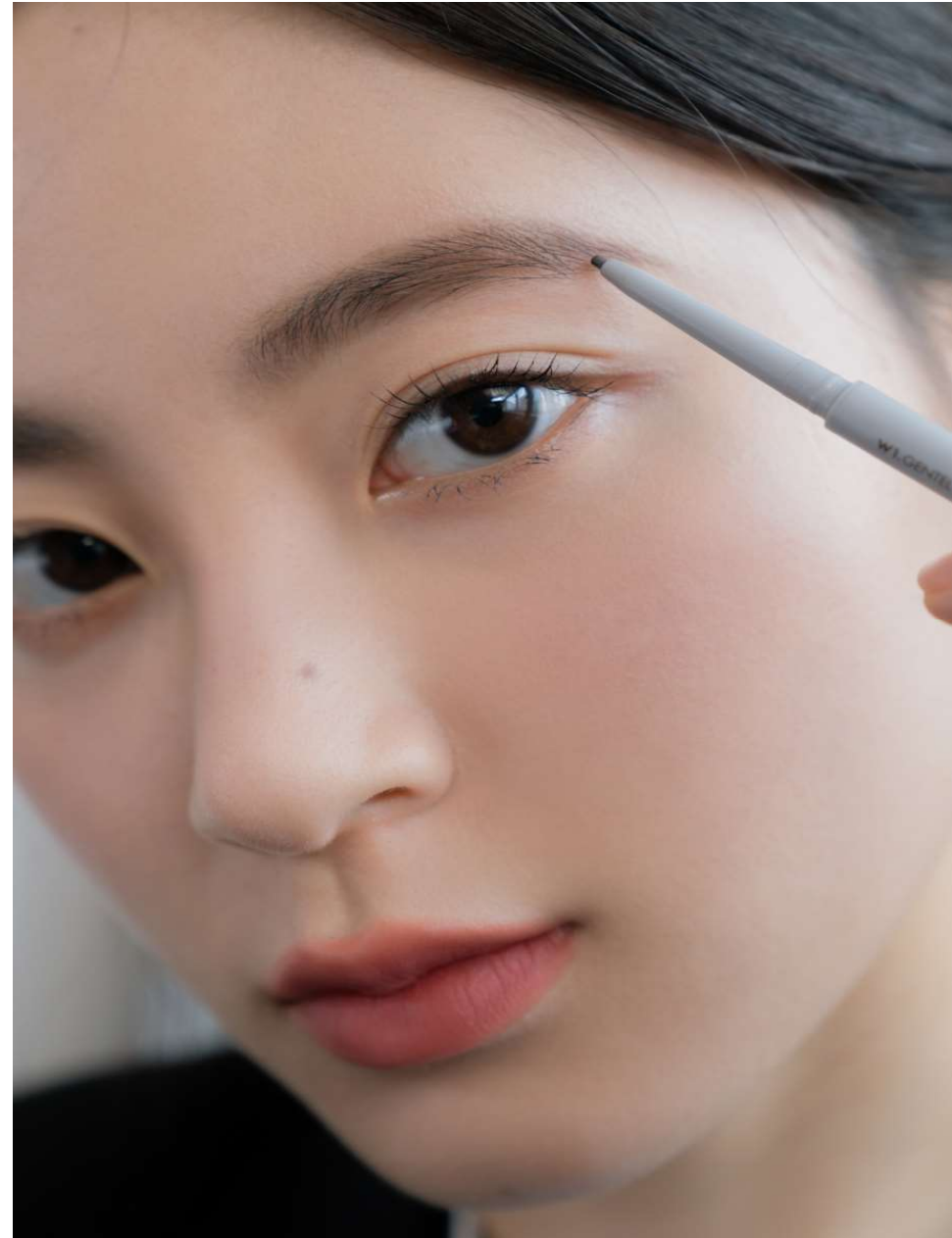




Han-all brow fixer



Han-all eyebrow  
(flat/sharp)





C1. Classic gray



C2. Grace taupe



C3. Modern beige



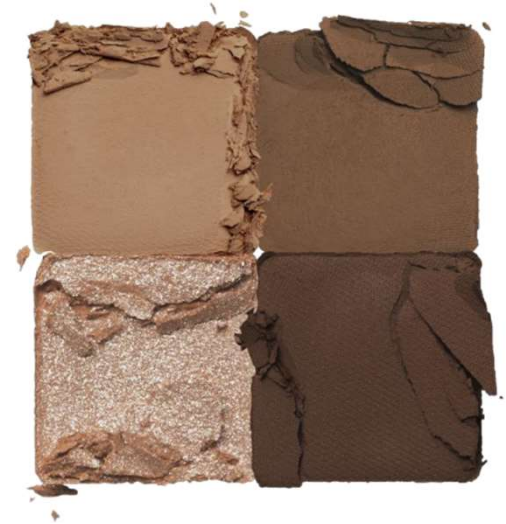
W1. Gentle brown



W2. Mild woody



W2. Merry blondy



**Better than eyes**



01. Dry mango tulip



02. Dry rose



03. Dry ragras



M01. Dry apple blossom



M02. Dry buckwheat flower



W01. Dry Lavender



W02. Dry peach blossom



N01. Dry willow flower



N02. Dry Violet



**Better than palette**





00. Light & glitter garden



03. Rosebud garden



01. Pampas garden



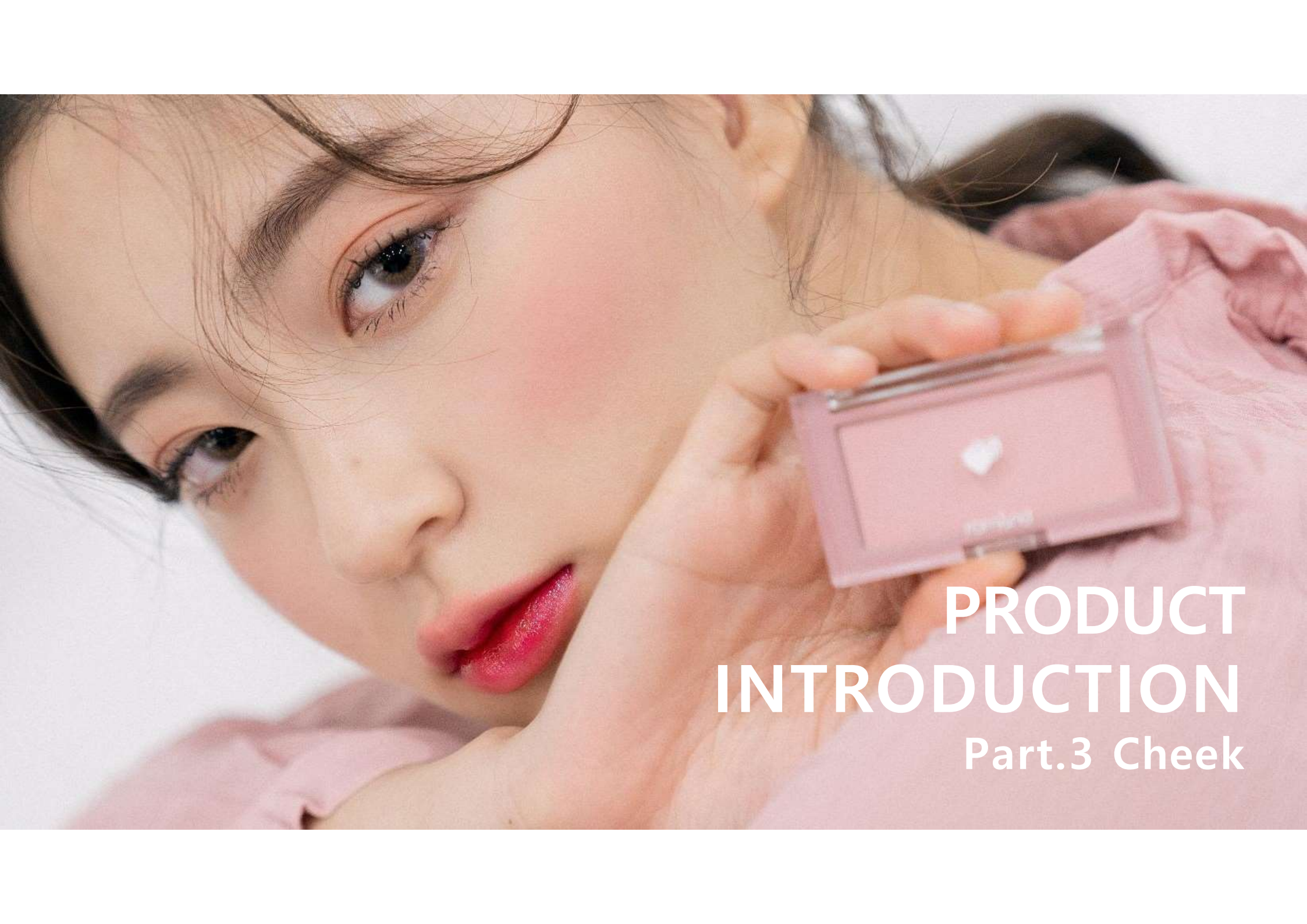
04. Dusty fog garden



02. Mahogany garden



05. Shade & shadow garden



**PRODUCT  
INTRODUCTION**  
Part.3 Cheek



(사진을 클릭하시면, 관련 페이지로 넘어갑니다.)



## See-through melting cheek



# See-through melting cheek



SMC01 Melting beige



SMC02 Melting coral



SMC03 Melting lavender



**Better than cheek**



02 Peach chip



03 Blueberry chip



04 Fig chip



07 Pear chip



W01 Odi milk



W02 Strawberry milk



W03 Apricot milk



**See-through veillighter**

# See-through veillighter



SV01 Sunkissed Veil  
(warm tone)



VS02 Moonkissed veil  
(cool tone)



Better than shape



# Better than shape



No.1 Oat grain  
(cool tone)



No.2 Walnut grain  
(warm tone)



A close-up portrait of a woman with dark hair and red lipstick, holding a round, light purple cosmetic container. The container has the brand name 'rom&nd' printed on it. The background is a plain, light blue-grey color.

# PRODUCT INTRODUCTION

Part.4 Face



**Clear cover cushion**





No.1 Pure 21



No.2 Natural 21



No.3 Beige 23

## Clear cover cushion



(사진을 클릭하시면, 관련 페이지로 넘어갑니다.)



**Zero cushion**



No.1 Pure 21



No.2 Natural 21



No.3 Beige 23

**Zero cushion**



# Zero Sun Clean



# Zero sun clean

01 FRESH



02 TONE UP





**Better than finish**





rom&nd