

SL12 Hanging Light

Product Features

- Hanging, pendant fixture for downlighting
- Single source LED chip for greater lux control
- Adjustable lumen output
- Patented design
- Frosted lens and hex lens included
- Design complies with IDA guidelines for dark sky preservation



Specifications

Fixture Type: Dedicated Low Voltage LED

Color Temperature: 2700K / 3000K

Material: Marine-Grade Virgin Brass with a UV Coating

Finish: Antique Bronze

Wattage: 0W - 6.3W

Lumen Output: 0 lm - 145 lm

Operating Voltage: 9V - 15V AC

Light Source: CREE LED

Lens: Frosted Lens & Hex Lens

Color Rendering Index: 97+

TM-30 Rf: 95

TM-30 Rg: 101

Lead Wire: 15' 18AWG

Mounting: Ring on top of fixture for hanging

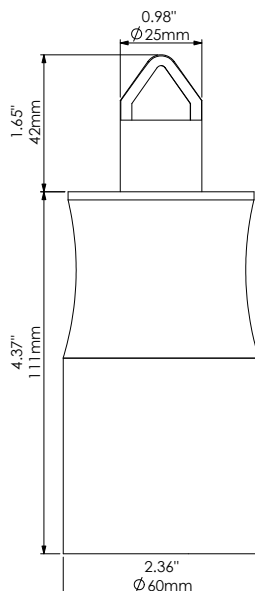
Accessories: Optional Grippler® Stainless Steel Cable Hanging Kit sold separately

Listing: ETL

Standard: UL 1838

Rating: IP65

Product Drawings

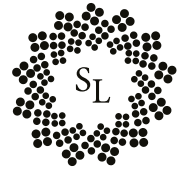


Adjustable Lumen Settings

No pins up: 0 lm (min)	1 pin up: 25 lm
2 pin up: 65 lm	3 pins up: 95 lm
4 pins up: 125 lm	5 pins up: 145 lm (max)

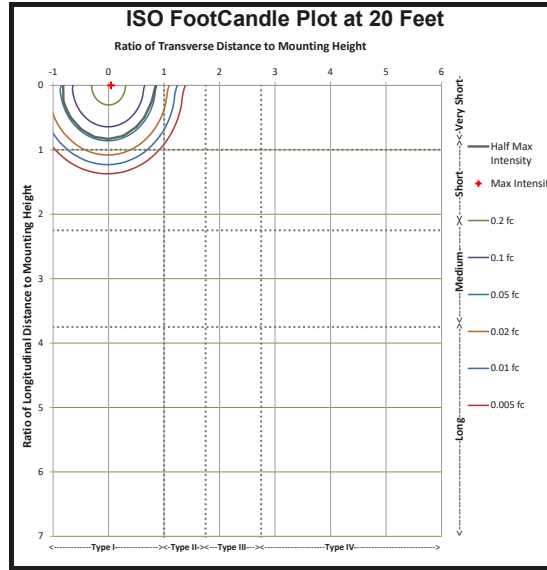


Sterling Lighting LLC SL12 Hanging Light



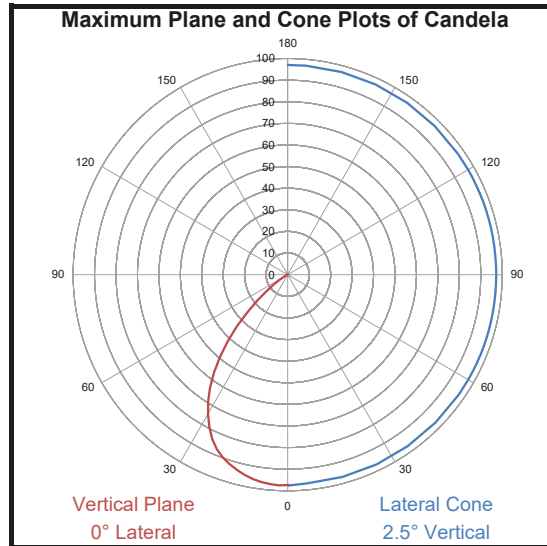
Electrical Test Conditions						
Temp	Voltage	Current	Power	Power Factor	Frequency	Current THD
24.7 °C	13.95 VAC	0.7235 A	6.210 W	0.615	60 Hz	122 %

Summary of Results	
Total Lumen Output	147.4 Lumens
Luminaire Efficacy	23.5 lm/w
Maximum Candela	98 Candela
IES Roadway Classification	Type I, Very Short
Cutoff Classification	Full Cutoff
BUG Rating	B0 U0 G0
CCT	2961 K
CRI	97.5
Duv	-0.0016
TM-30 Rf	95.0
TM-30 Rg	101.0

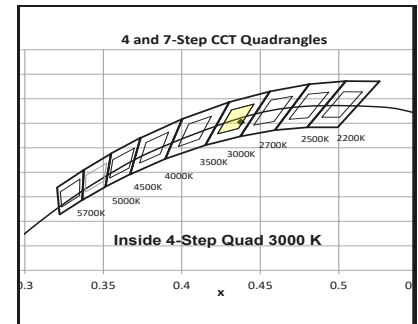
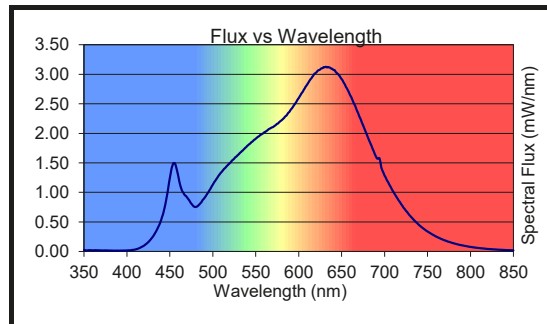


Intensity Through Maximum Plane (Candlepower)		
Angle	Candlepower	Lumens
0	97	
5	97	9
10	96	
15	93	26
20	90	
25	84	38
30	75	
35	64	38
40	49	
45	34	25
50	19	
55	8	8
60	3	
65	1	1
70	0	
75	0	0
80	0	
85	0	0
90	0	
95	0	0
100	0	
105	0	0
110	0	
115	0	0
120	0	
125	0	0
130	0	
135	0	0
140	0	
145	0	0
150	0	
155	0	0
160	0	
165	0	0
170	0	
175	0	0
180	0	

Luminaire Classification System (LCS)			
LCS	Zone	Lumens	%
FL	(0-30)	36	25%
FM	(30-60)	34	24%
FH	(60-80)	1	0%
FVH	(80-90)	0	0%
BL	(0-30)	37	25%
BM	(30-60)	36	25%
BH	(60-80)	1	0%
BVH	(80-90)	0	0%
UL	(90-100)	0	0%
UH	(100-180)	0	0%



Color Rendering Index Details	
Ra (CRI)	97.5
R1	99
R2	99.3
R3	97.5
R4	98.3
R5	98.4
R6	97.5
R7	96.6
R8	93.9
R9	86.4
R10	96.9
R11	97.9
R12	86.3
R13	99.5
R14	97.7



Chromaticity Coordinates	
Chromaticity (x)	0.4376
Chromaticity (y)	0.4009
Chromaticity (u)	0.2524
Chromaticity (v)	0.3468
Chromaticity (u')	0.2524
Chromaticity (v')	0.5202

Testing was performed in accordance with LM-79-08
The results contained in this summary pertain only to report #13599523.18

