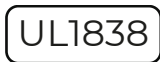


# SL11 Archer Light

HIGH LUMEN

## Product Features

- Single source LED for greater lux control
- Available to order in either low lumen or high lumen output
- Patented, sleek and compact design
- Small luminaire virtually disappears into landscape
- Solid, streamlined body with no knuckle or weak point



## Specifications

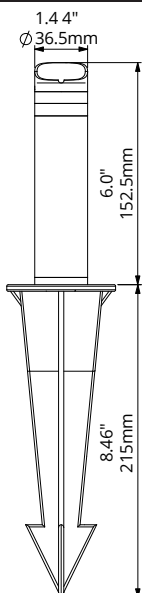
Rev. 04/2024

**Luminaire Type:** Dedicated Low Voltage LED  
**Color Temperature:** 2700K / 3000K  
**Material:** Marine-Grade, Virgin Brass with a UV Coating  
**Finish:** Antique Bronze or Raw Brass  
**Wattage:** 6.8W  
**Field Angle:** 60°

**Lumen Output:** 360 lm  
**Operating Voltage:** 9V - 15V AC  
**Light Source:** CREE LED  
**Optics:** 24°, 40° (standard), 60°, or 80° (no optic)  
**Color Rendering Index:** 96+  
**TM-30 Rf:** 95  
**TM-30 Rg:** 101

**Wire Lead:** 10' 18AWG  
**Mounting:** 9" ABS Plastic Stake  
**Lens:** Clear  
**Accessories:** Hex Lens sold separately  
**Listing:** ETL  
**Standard:** UL 1838  
**Rating:** IP65

## Product Drawings



## Driver at 15V Input

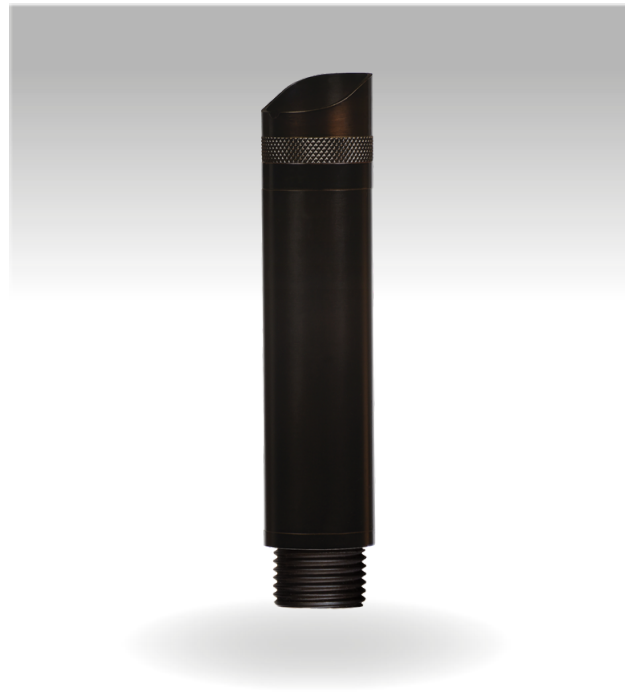
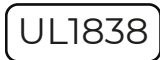
	Lumens	VA	Lm/W
Non-Adjustable	360 lm	9.67 VA	52.69

# SL11 Archer Light

LOW LUMEN

## Product Features

- Single source LED for greater lux control
- Available to order in either low lumen or high lumen output
- Patented, sleek and compact design
- Small luminaire virtually disappears into landscape
- Solid, streamlined body with no knuckle or weak point



## Specifications

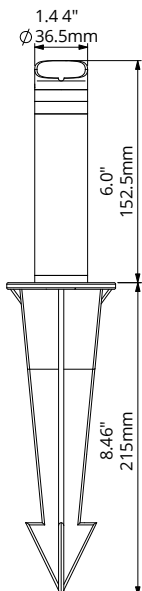
Rev. 04/2024

**Luminaire Type:** Dedicated Low Voltage LED  
**Color Temperature:** 2700K / 3000K  
**Material:** Marine-Grade, Virgin Brass with a UV Coating  
**Finish:** Antique Bronze or Raw Brass  
**Wattage:** 3.7W  
**Field Angle:** 60°

**Lumen Output:** 220 lm  
**Operating Voltage:** 9V - 15V AC  
**Light Source:** CREE LED  
**Optics:** 24°, 40° (standard), 60°, or 80° (no optic)  
**Color Rendering Index:** 96+  
**TM-30 Rf:** 95  
**TM-30 Rg:** 101

**Lead Wire:** 10' 18AWG  
**Mounting:** 9" ABS Plastic Stake  
**Lens:** Clear  
**Accessories:** Hex Lens sold separately  
**Listing:** ETL  
**Standard:** UL 1838  
**Rating:** IP65

## Product Drawings



## Driver at 15V Input

	Lumens	VA	Lm/W
Non-Adjustable	220 lm	5.51 VA	58.47