

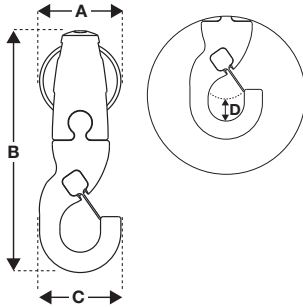


# Angel Feet-Hook



The Angel is now even more versatile with a wide range of feet available to suit your application.

## Hook



- Ideal for light fittings, signage, or for use with eyebolts, spring and cable anchors
- Safety clasp for security
- Integrated Side Hook with 0.17" clearance
- Side cable exit



| Dimension     | A    | B    | C    | D    |
|---------------|------|------|------|------|
| Size (inches) | 0.63 | 1.87 | 0.63 | 0.17 |

PI-ANGEL-US

[www.gripple.com](http://www.gripple.com)

Gripple's policy is one of continuous development and innovation. We therefore reserve the right to alter specifications, etc. without notice.



Gripple Inc | 1611 Emily Lane | Aurora, IL 60502 | USA

Tel +1 866 474 7753 Fax +1 800 654 0689 email [usinfo@gripple.com](mailto:usinfo@gripple.com)