



GRAY-NICOLLS

# CRICKET

## Teamwear, Bags, Balls and Equipment

Available in club colours  
for your team

'Made to Order' for  
schools and clubs

Core colours immediately  
from stock



# Introduction

Welcome to the Gray-Nicolls Teamwear Brochure. As a brand that is instantly recognizable within the game, we are proud to present a comprehensive playing and training collection that offers the latest innovations in technical fabrics, along with sport specific functionality.

Benefiting from the feedback and design influence of today's leading players, Gray-Nicolls: Official Clothing Suppliers to Durham CCC, Glamorgan CCC and Gloucestershire CCC; offers First Class performance, both on and off the field.

A dedicated team oversee every aspect of our clothing design, development, sourcing and ordering process to ensure your club or school experiences the highest quality of service as you would expect from the game's leading brand.

Whatever your requirement we are confident that we supply the highest quality products, at all standards, that will provide your club with its own identity and style. Unite your club or school with a collection that exudes quality, performance, individuality and an association with a company that boasts 160 years of cricketing history.

For more information on our clothing collection and additional services, including our bespoke webshop facility, please call 01580 883120 or visit our online kit designer at [www.gnteamwear.com](http://www.gnteamwear.com)



## 160th Anniversary

Grays since 1855 – 160 years in sport

**twitter**   
@graynics

**You Tube**  
Broadcast Yourself  
GrayNics

**facebook**  
Gray-Nicolls Grays

# Contents

## MATCH WEAR - STOCK

Velocity Shirts .....	2
Storm Shirts .....	3
Matrix Shirts .....	4
Velocity Trousers .....	2
Matrix Trousers .....	4
Velocity Slipovers .....	5
Acrylic Slipovers .....	5
Velocity Sweaters .....	5
Acrylic Sweaters .....	5

## MATCH WEAR - MADE TO ORDER

Velocity Shirts .....	2 / 6 / 7-8
Velocity Trousers .....	2 / 9
Storm Shirts .....	3
Velocity Slipovers .....	10
Velocity Sweaters .....	11

## TEAMWEAR RANGES

Storm Range .....	12
Revolution Range .....	13
Pro Team Range .....	14

## TRAINING WEAR - MADE TO ORDER

Storm Shower Jackets .....	15
Pro Team Jackets .....	15
Revolution ½ Zip Jackets .....	15
Vapour Hoodies .....	16
Storm Hoodies .....	16
Pro Team Hoodies .....	16
Revolution Hoodies .....	16
Revolution Track Top / Trousers .....	18
Pro Team Track Top / Trousers .....	18
Storm Track Top / Trousers .....	19
Synergie Trousers .....	19
Vapour Polo Shirts .....	20
Vapour Tee Shirts .....	20
Pro Team Polo Shirts .....	20
Pro Team Tee Shirts .....	20
Matrix Polo Shirts .....	21
Matrix Tee Shirts .....	21
Matrix Vests .....	22
Vapour Vests .....	22
Storm Shorts .....	22
Vapour Gym Shorts .....	22

## TRAINING WEAR - STOCK

Storm Shower Jackets .....	15
Storm Hoodies .....	17
Storm Sweat Pants .....	17
Storm Track Trousers .....	19
Matrix Polo Shirts .....	21
Matrix Tee Shirts .....	21
Storm Shorts .....	23
Storm Thermo Fleecees .....	23
Polo Shirts .....	23
Bamboo Tees .....	23
Velocity Base Layers .....	24
Velocity Jock Shorts .....	24
Jock Straps .....	24
Jock Briefs .....	24
Jock Shorts .....	24

## HEAD WEAR

Hats .....	24
Helmets .....	25

## LEGGUARDS

Oblivion Test Batting Legguards .....	25
Oblivion Test Wicket Keeping Legguards .....	25

## LUGGAGE

GN100 .....	26
Impact Duffle Bag .....	26
GN300 Holdall .....	26
Club Rucksack .....	26

## BALLS

Match and Training Balls .....	27
--------------------------------	----

## ACCESSORIES

Training Accessories .....	28
Pitch Accessories .....	29

## OTHER INFORMATION

Order Information .....	30-31
Embellishment Services .....	32
Brand Guidelines .....	33
Glossary of Terms .....	34
Size Chart .....	35
Colour Chart .....	36-37

## Velocity Shirt - Stocked Item

These cricket-specific Velocity shirts are manufactured from fabrics that stretch to allow the garment to move naturally with the body during the most strenuous athletic activities. Featuring moisture controlling materials, ventilation channels, collar for UV protection and concealed button placket. The long sleeve has a self fabric cuff.

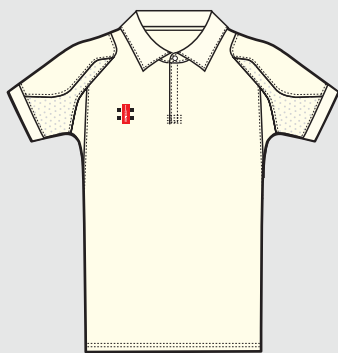
**Level:** First Class.

**Sizes:** Men's XS - 2XL.

**Fit Styles:** Available in long sleeve or short sleeve.

**Fabric:** G-Pro Stretch 705.

Available from stock in one week as shown. Your logo/sponsor's logo and number can be added and supplied in 3 weeks from sign-off.



Ivory

Men's S/S Code: 50211+  
Men's L/S Code: 50217+

## Velocity Trousers - Stocked Item

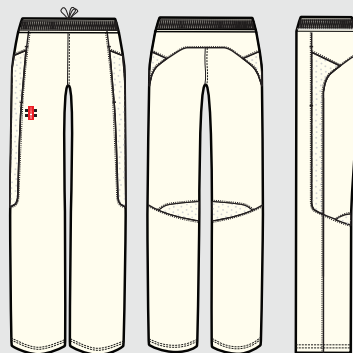
Engineered to move naturally with the body for greater comfort. Velocity trousers are suitable for batting, bowling, fielding and wicket keeping. Mesh panels behind knee assist temperature regulation. Key features include heat and ventilation zones, strategically placed hard wearing fabric at the side leg, elasticated waist, drawcord and 2 front pockets.

**Level:** First Class.

**Sizes:** Men's XS - 2XL.

**Fabric:** G-Com 605.

Available from stock in one week as shown. Your logo/sponsor's logo and number can be added and supplied in 3 weeks from sign-off.



Ivory

Men's Code: 50192+

## Velocity Shirt - Made To Order

Velocity shirts can be made to order in your chosen colours.

**Level:** First Class.

**Sizes:** Men's 2XS - 3XL Women's 6 - 18 Junior's 5/6 - 11/12 Yrs

**Fit Styles:** Available in long sleeve or short sleeve.

**Fabric:** G-Pro Stretch 700 / G-Lite 700.

**Minimum Order:** 12

**Lead Time:** 8 weeks from order acceptance.

(See order information on page 30)



Men's S/S Code: 28179s  
Women's S/S Code: 27208s  
Junior's S/S Code: 28181s  
Men's L/S Code: 28951s  
Women's L/S Code: 28950s  
Junior's L/S Code: 28952s

Please use the colour palette below to choose fabric colours for the panels on this garment.

### VELOCITY SHIRT MAIN BODY COLOUR OPTIONS



### VELOCITY SHIRT CONTRAST PANEL COLOUR OPTIONS



## Velocity Trousers - Made To Order

Velocity trousers can be made to order in your chosen colours.

**Level:** First Class.

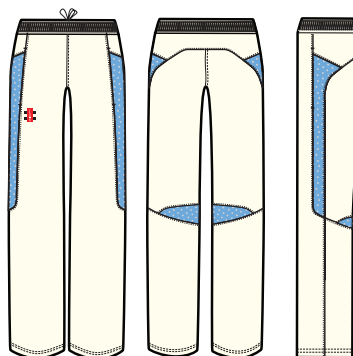
**Sizes:** Men's 2XS - 3XL Women's 6 - 18 Junior's 5/6 - 11/12 Yrs.

**Fabric:** G-Com 600 / G-Lite 800 / G-Lite 700.

**Minimum Order:** 12

**Lead Time:** 8 weeks from order acceptance.

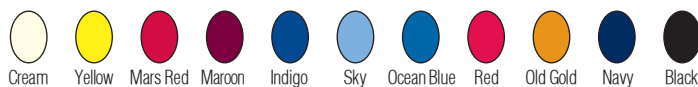
(see order procedures on page 30).



Men's Code: 28171s  
Women's Code: 27212s  
Junior's Code: 28183s

Please use the colour palette below to choose fabric colours for the panels on this garment.

### VELOCITY TROUSERS MAIN BODY COLOUR OPTIONS



### VELOCITY TROUSERS SIDE PANEL COLOUR OPTIONS



### VELOCITY TROUSER BACK KNEE COLOUR OPTIONS



## Storm Shirt - Stocked Item

Storm shirts have been designed specifically for cricket, giving greater comfort and performance and to aid athlete's movement during play. Moisture-controlling materials and ventilation channels allow air to flow close to the skin and draw heat away from the body. The collar aids UV protection.

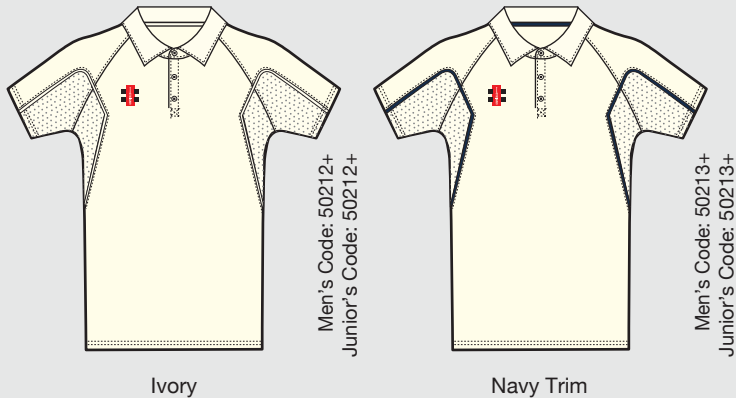
**Level:** Club.

**Sizes:** Men's 2XS - 2XL Junior's 9/10 - 11/12 Yrs.

**Fit Style:** Available in short sleeve only.

**Fabric:** G-Lite 605.

Available from stock in one week as shown. Your logo/sponsor's logo and number can be added and supplied in 3 weeks from sign-off.



## Storm Shirt - Made To Order

Storm shirts can be made to order in your chosen colours.

**Level:** Club

**Sizes:** Men's 2XS - 3XL Women's 6 - 18 Junior's 5/6 - 11/12 Yrs

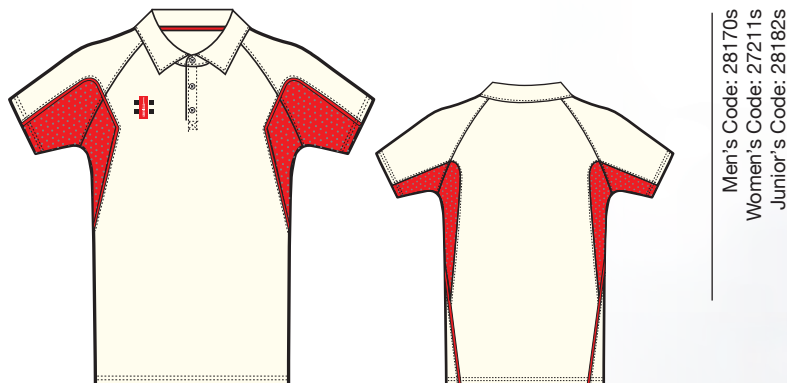
**Fit Styles:** Available in short sleeve only.

**Fabric:** G-Lite 600 / G-Mesh 400

**Minimum Order:** 15

**Lead Time:** 8 weeks from order acceptance.

(See order information on page 30)



Please use the colour palette below to choose fabric colours for the panels on this garment.

### STORM SHIRT MAIN BODY COLOUR OPTIONS



### STORM SHIRT CONTRAST PANEL COLOUR OPTIONS



## Matrix Shirts - Stocked Item

Matrix shirts assist movement during play, providing greater comfort and performance. Moisture-controlling fabrics draw sweat away from the body on hot days whilst the collar provides UV protection. Short sleeve shirts offer decorative piping colour options and the long sleeve shirts have a self fabric cuff.

**Level:** Club or School.

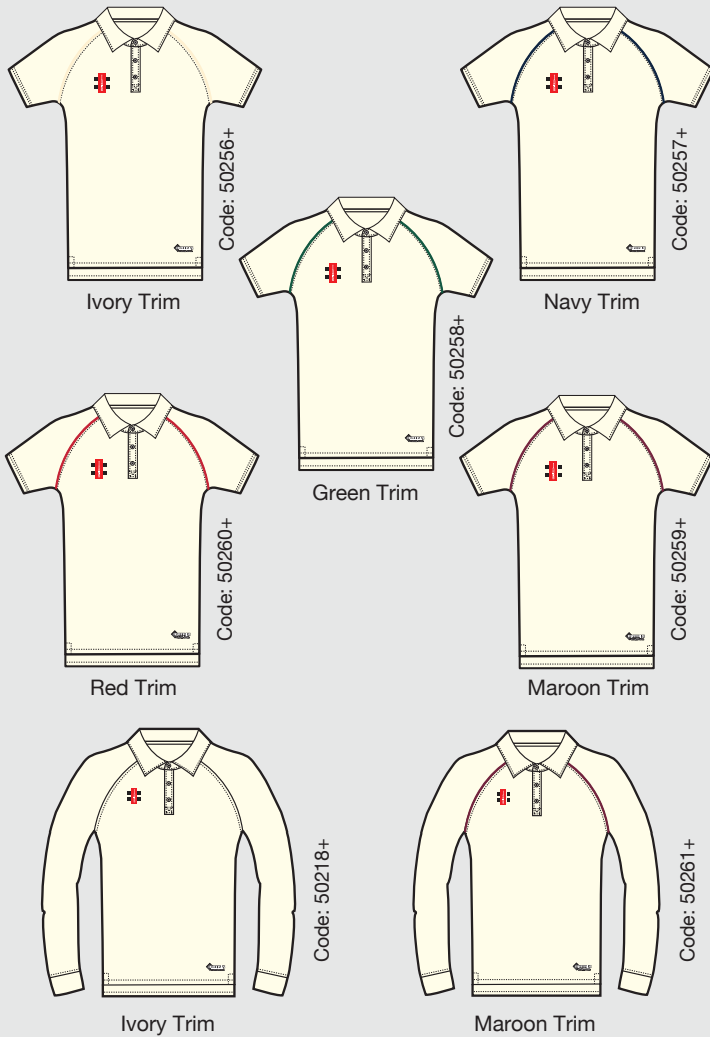
**Sizes (Short Sleeve):** Men's 2XS - 3XL Junior's 5/6 - 11/12 Yrs.

**Sizes (Long Sleeve):** Men's 2XS - 2XL Junior's 5/6 - 11/12 Yrs.

**Fit Styles:** Available in long sleeve or short sleeve.

**Fabric:** G-Lite 505.

Available from stock in one week as shown. Your logo/sponsor's logo and number can be added and supplied in 3 weeks from sign-off.



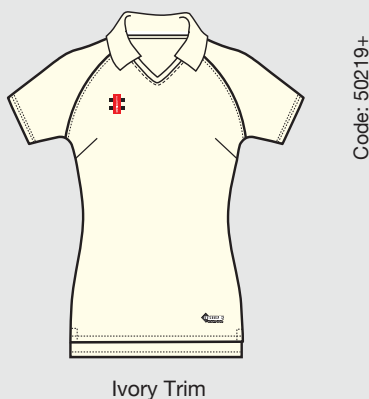
## Women's Matrix Shirt - Stocked Item

**Level:** Club or School.

**Sizes:** Women's 6 - 18.

**Fit Style:** Available in short sleeve only.

**Fabric:** G-Lite 505.



## Matrix Trousers - Stocked Item

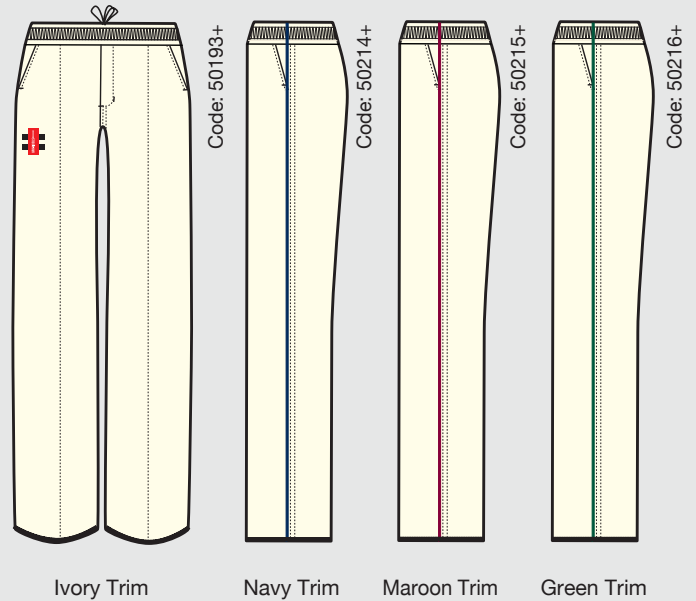
The Matrix trouser is designed for all round performance. High quality lightweight and very comfortable, these cricket-specific trousers are suitable for batting, bowling and wicket keeping. Unfinished hem for ease of alteration (supplied with iron-on hemming tape). Elasticated waist with drawcord and 2 pockets.

**Level:** Club or School.

**Sizes:** Men's 2XS - 3XL Junior's 5/6 - 11/12 Yrs.

**Fabric:** G-Com 505.

Available from stock in one week as shown. Your logo/sponsor's logo and number can be added and supplied in 3 weeks from sign-off.



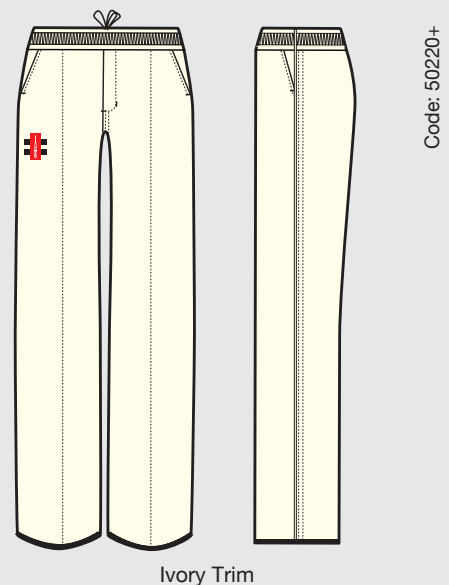
## Women's Matrix Trousers - Stocked Item

**Level:** Club or School.

**Sizes:** Women's 6 - 18.

**Fabric:** G-Com 505.

Available from stock in one week as shown. Your logo/sponsor's logo and number can be added and supplied in 3 weeks from sign-off.



## Velocity Slipover - Stocked Item

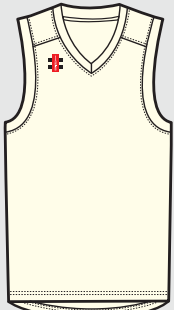
Lightweight sport-specific bonded fabric with fleece inner lining. This versatile fabric is able to provide warmth without weight. V-neck design can be worn comfortably with a collared shirt.

**Level:** First Class.

**Sizes:** Men's 2XS - 3XL Junior's 5/6 - 11/12 Yrs.

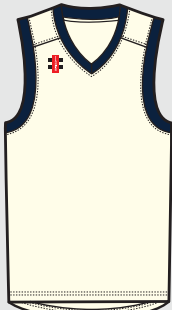
**Fabric:** G-Fleece 605.

Available from stock in one week as shown. Your logo/sponsor's logo and number can be added and supplied in 3 weeks from sign-off.



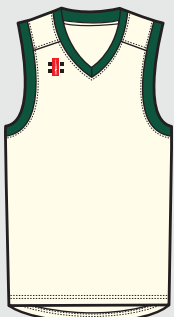
Code: 50222+

Ivory Trim



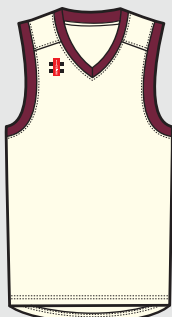
Code: 50253+

Navy Trim



Code: 50254+

Green Trim



Code: 50255+

Maroon Trim

## Velocity Sweater - Stocked Item

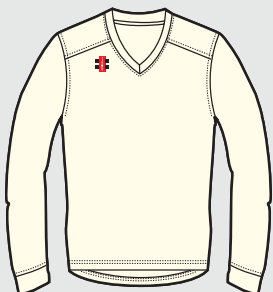
Manufactured from the same high quality fabrics as the Velocity Slipover shown above.

**Level:** First Class.

**Sizes:** Men's 2XS - 3XL Junior's 5/6 - 11/12 Yrs.

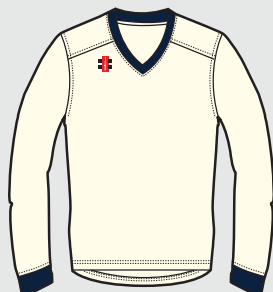
**Fabric:** G-Fleece 605.

Available from stock in one week as shown. Your logo/sponsor's logo and number can be added and supplied in 3 weeks from sign-off.



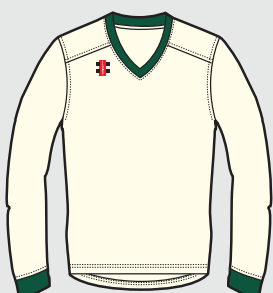
Code: 50221+

Ivory Trim



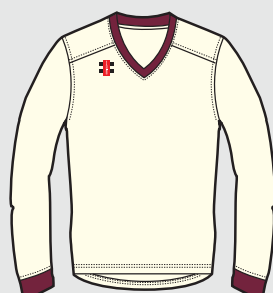
Code: 50250+

Navy Trim



Code: 50251+

Green Trim



Code: 50252+

Maroon Trim

## Acrylic Slipover - Stocked Item

Cable-knit design sweater ideal for extra warmth on colder days. V-neck design can be worn comfortably with a collared shirt.

**Level:** First Class.

**Sizes:** Men's 2XS - 2XL Junior's 5/6 - 11/12 Yrs.

**Fabric:** G-Knit 605.

Available from stock in one week as shown. Your logo/sponsor's logo and number can be added and supplied in 3 weeks from sign-off.



Code: 50224+

Ivory

## Acrylic Sweater - Stocked Item

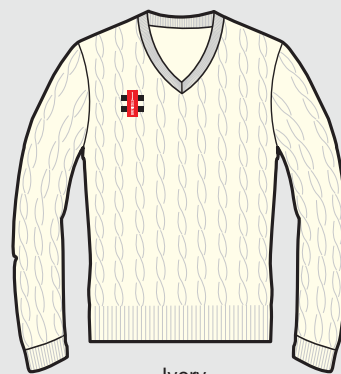
Designed from the same materials to compliment the Acrylic Slipover, the Acrylic Sweater has ribbed cuff and hem to keep drafts out and provide extra warmth on colder days. V-neck design to be worn comfortably with collared shirt.

**Level:** First Class.

**Sizes:** Men's 2XS - 2XL Junior's 5/6 - 11/12 Yrs..

**Fabric:** G-Knit 605.

Available from stock in one week as shown. Your logo/sponsor's logo and number can be added and supplied in 3 weeks from sign-off.



Code: 50223+

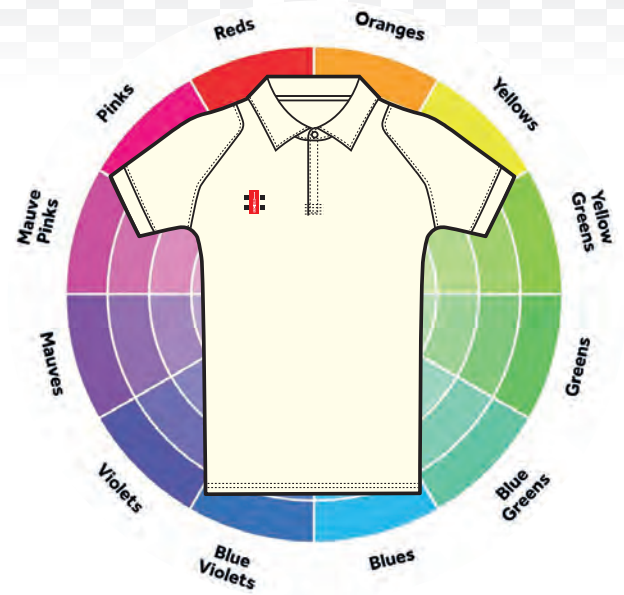
Ivory

# Sublimated Shirts

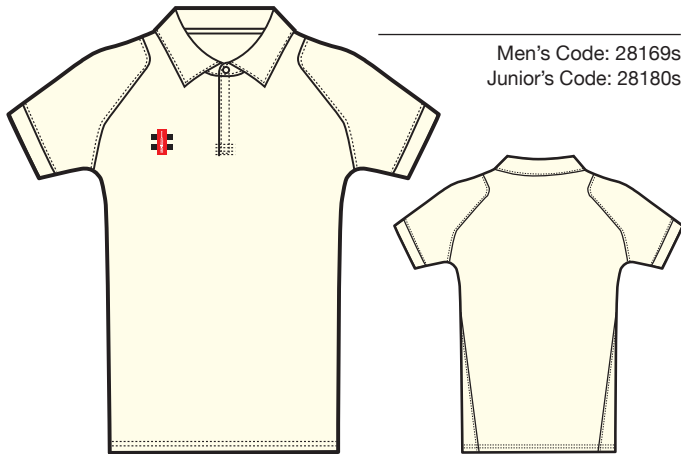
For teams who require complex printed graphics, a limitless range of colours and designs can be achieved by using sublimated printing techniques.

Gray-Nicolls are able to offer high performance sublimated match wear, including the Velocity Shirt which can be customised to incorporate your team colours. Our design team will work with you to create the design that is right for you.

Club & sponsor logos can be added at the same time as players names and numbers on sublimated items, at no extra cost.

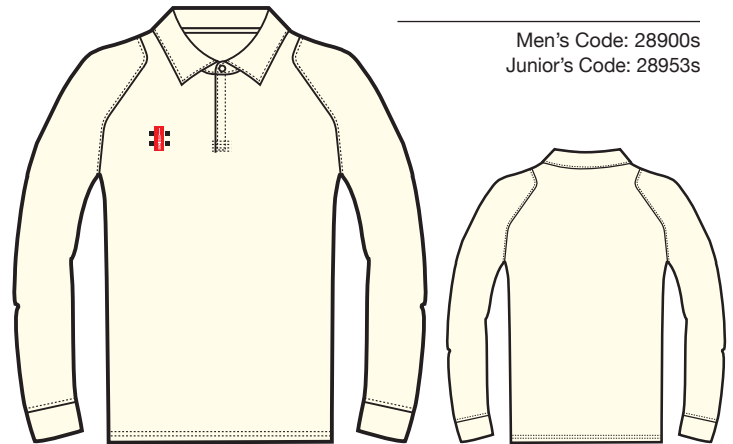


## Short Sleeve Velocity Shirt



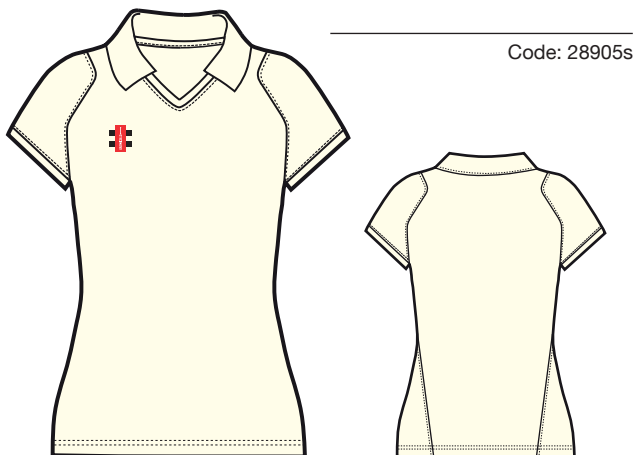
Men's Code: 28169s  
Junior's Code: 28180s

## Long Sleeve Velocity Shirt



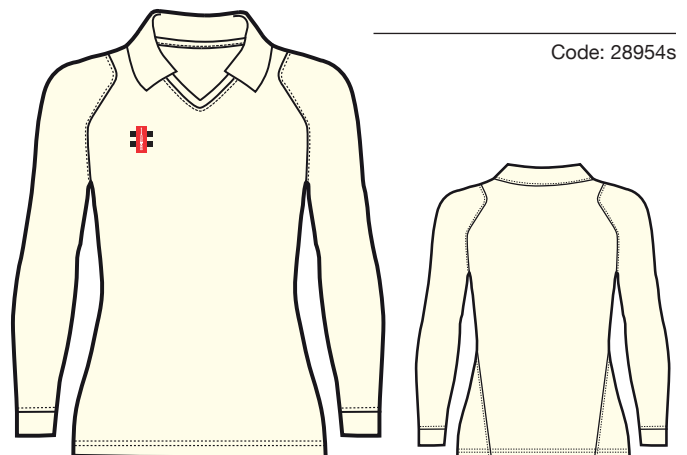
Men's Code: 28900s  
Junior's Code: 28953s

## Women's Short Sleeve Velocity Shirt



Code: 28905s

## Women's Long Sleeve Velocity Shirt



Code: 28954s

Velocity Shirts are manufactured from fabrics that stretch to allow the garment to move naturally with the body during the most strenuous athletic activities.

Featuring moisture controlling materials, collar for UV protection and concealed button placket. The long sleeve Velocity shirts have a self fabric cuff.



## Specifications

**Level:** First Class.

**Sizes:** Men's 2XS - 3XL Women's 6 - 18 Junior's 5/6 - 11/12 Yrs.

**Fit Styles:** Available in long sleeve and short sleeve.

**Fabric:** G-Pro Stretch 700.

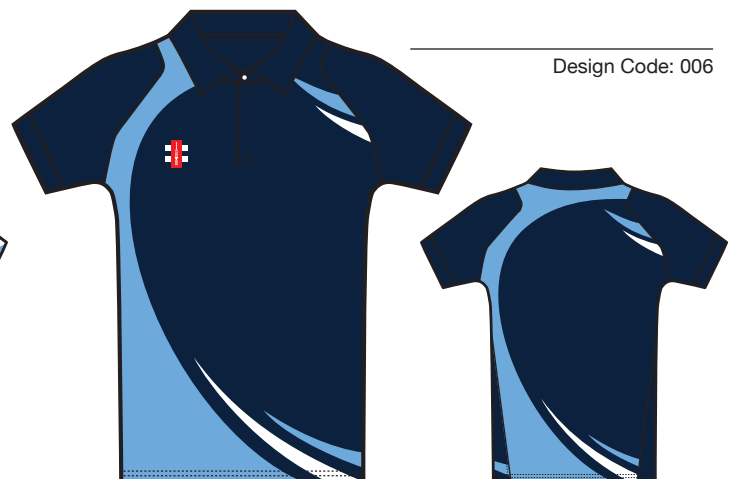
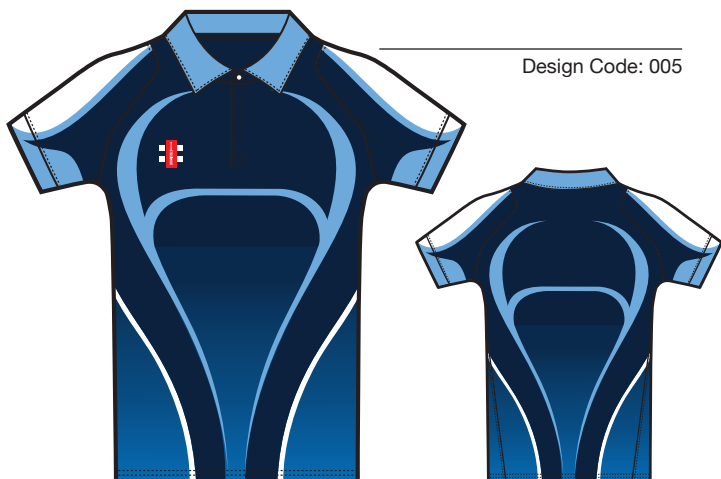
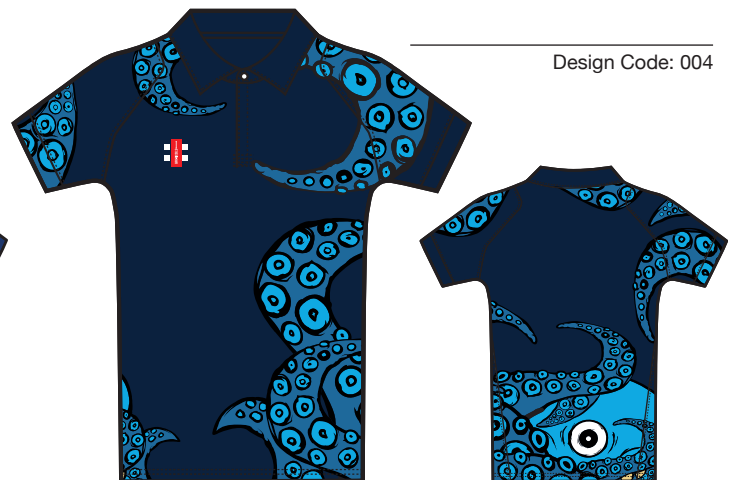
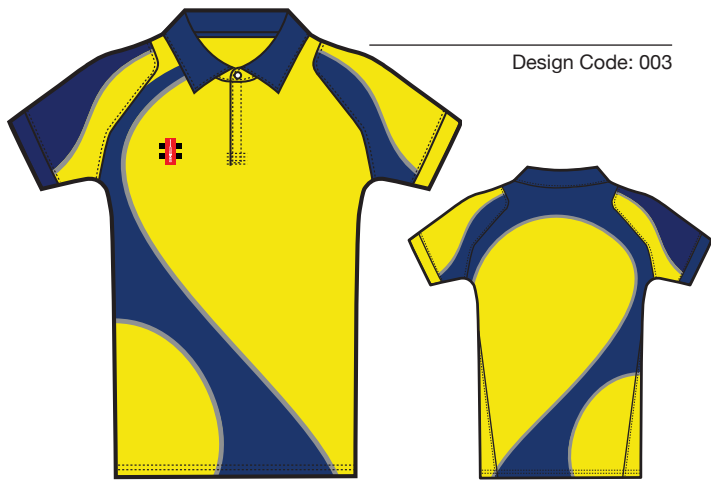
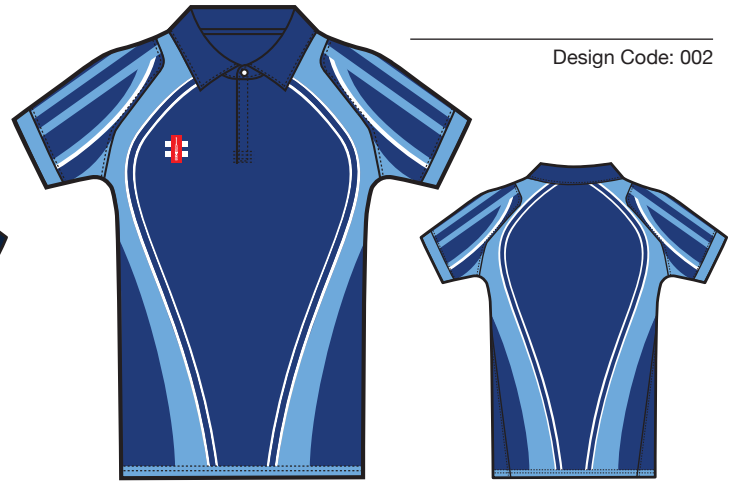
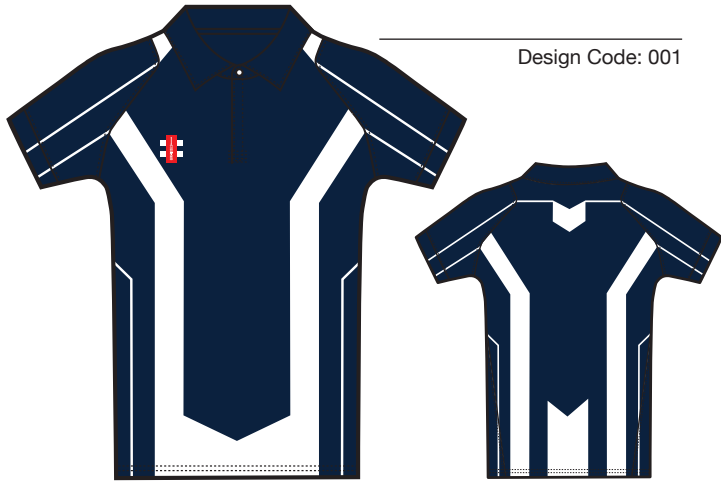
**Minimum Order Quantity:** 12

**Lead Time:** 8 weeks from order acceptance.

(see order procedures on page 30).

## Sublimated Examples

The Velocity Shirts shown below are displayed purely as examples of sublimated printing. Any printable colour and design is possible and any design can be printed on men's or women's short or long sleeve shirts. Please choose your own design or select one of our coded designs from the selection shown below.



For more detailed information, to place an order, or to discuss your requirements call: 01580 883120

# Velocity Coloured Shirts

Please select fabric colours from a) the colour options palettes or b) choose one of the coded designs shown.

## VELOCITY SHIRT MAIN BODY COLOUR OPTIONS



## VELOCITY SHIRT CONTRAST PANEL COLOUR OPTIONS



# Specifications

**Level:** First Class.

**Sizes:** Men's 2XS - 3XL Women's 6 - 18 Junior's 5/6 - 11/12 Yrs.

**Fit Styles:** Available in long or short sleeve.

**Fabric:** G-Pro Stretch 700 / G-Lite 700.

**Minimum Order Quantity:** 12

**Lead Time:** 8 weeks from order acceptance.

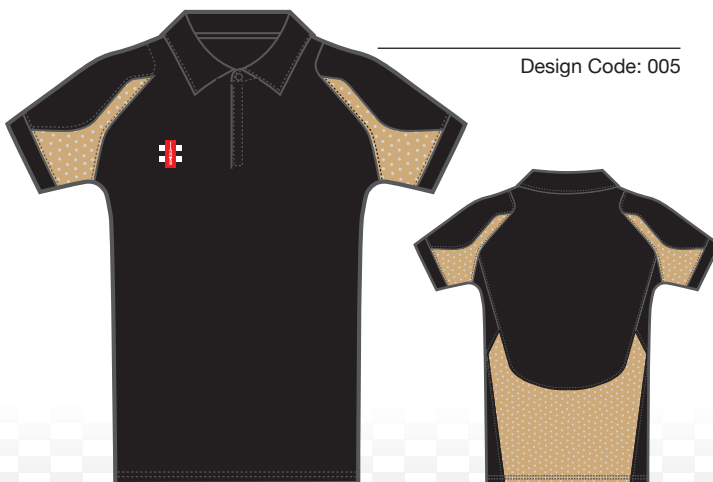
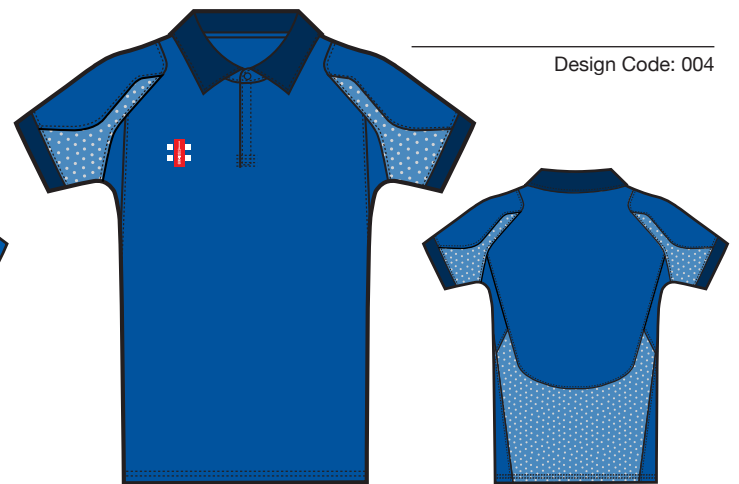
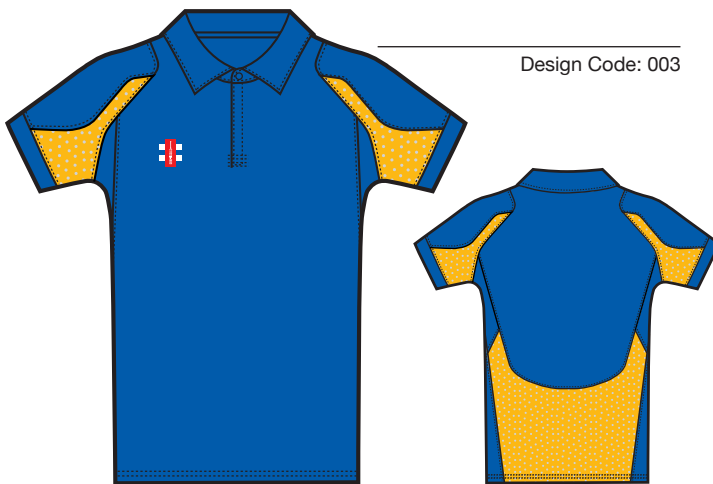
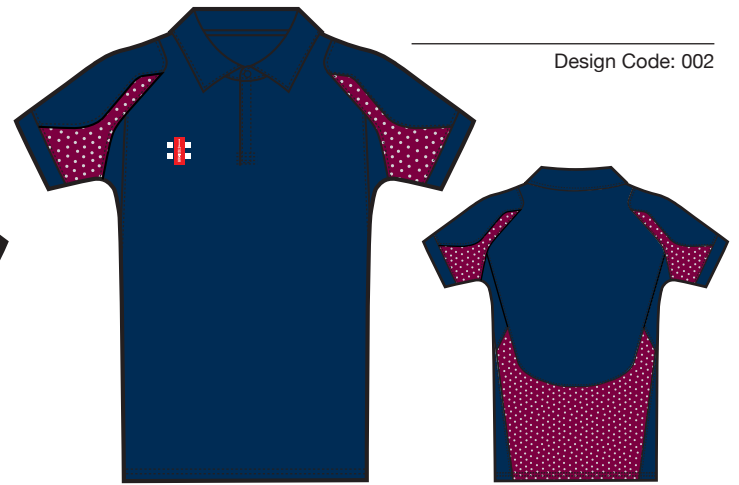
(see order procedures on page 30).

## Coloured Examples

Men's S/S Code: 28179s  
Men's L/S Code: 28951s

Women's S/S Code: 27208s  
Women's L/S Code: 28950s

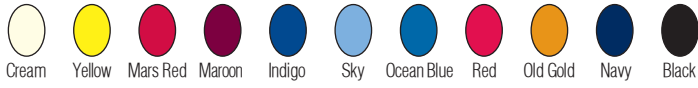
Junior's S/S Code: 28181s  
Junior's L/S Code: 28952s



# Velocity Coloured Trousers

Please select fabric colours from a) the colour options palettes or b) choose one of the coded designs shown.

## VELOCITY TROUSERS MAIN BODY COLOUR OPTIONS



## VELOCITY TROUSER BACK KNEE COLOUR OPTIONS



## VELOCITY TROUSERS SIDE PANEL COLOUR OPTIONS



# Specifications

**Level:** First Class.

**Sizes:** Men's 2XS - 3XL Women's 6 - 18. Juniors 5/6 - 11/12 Yrs.

**Fabric:** G-Com 600 / G-Lite 700 / G-Lite 800.

**Minimum Order Quantity:** 12

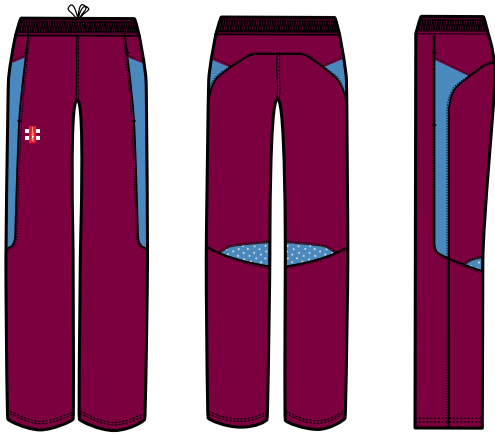
**Lead Time:** 8 weeks from order acceptance.  
(see order procedures on page 30).

# Coloured Examples

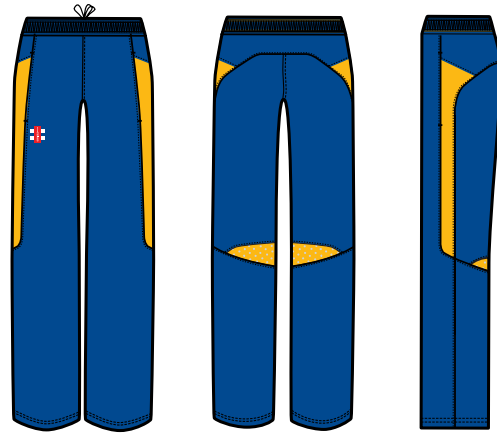
Men's Code: 28171s

Women's Code: 27212s

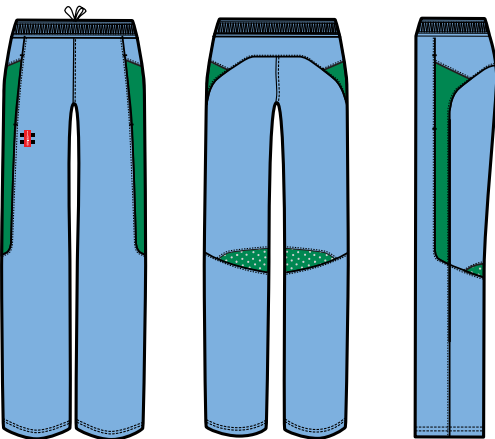
Junior's Code: 28183s



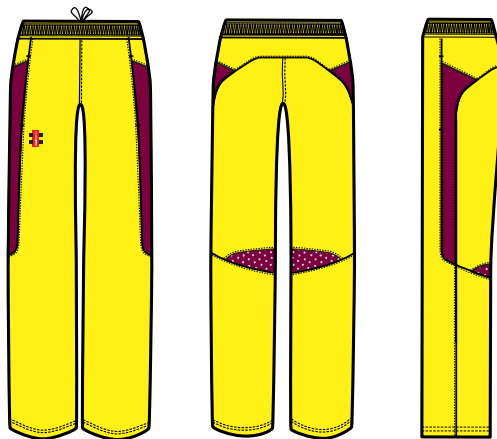
Design Code: 001



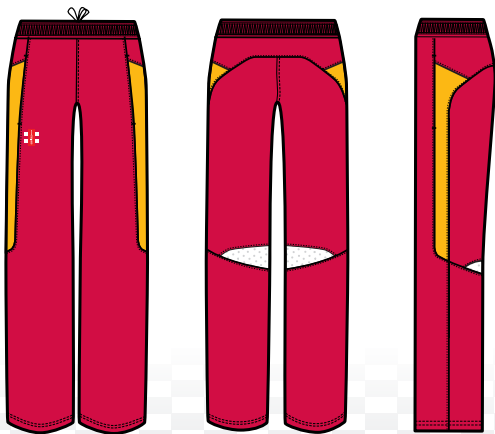
Design Code: 002



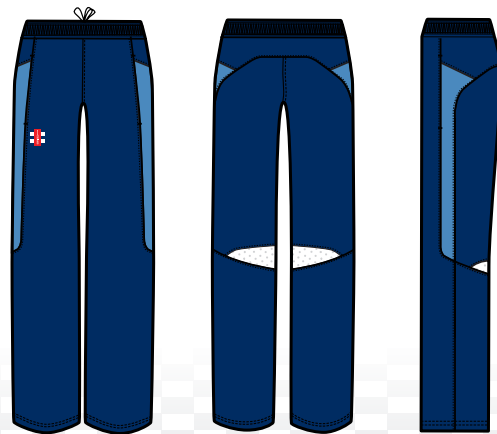
Design Code: 003



Design Code: 004



Design Code: 005



Design Code: 006

# Sublimated Velocity Slip Overs

The Velocity Slipovers shown below are displayed as examples of sublimated printing. Any printable colour and design is possible and any design can be printed on any size slipover. Please select your own design or choose one of our coded designs shown below. Your logo, sponsor's logo and number can be then be added to suit your teamwear needs.

# Specifications

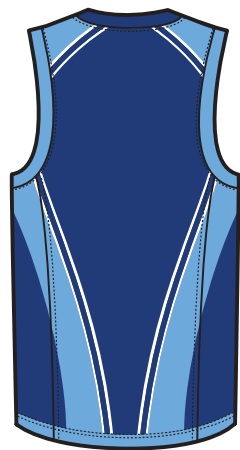
**Level:** First Class.  
**Sizes:** Men's 2XS - 3XL Women's 6 - 18 Junior's 5/6 - 11/12 Yrs.  
**Fabric:** G-Fleece 400.  
**Minimum Order Quantity:** 12  
**Lead Time:** 8 weeks from order acceptance.  
 (see order procedures on page 30).

Men's Code: 28901s      Women's Code: 27213s      Junior's Code: 27215s

## Sublimated Examples



Design Code : 001



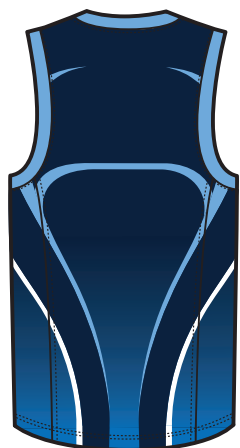
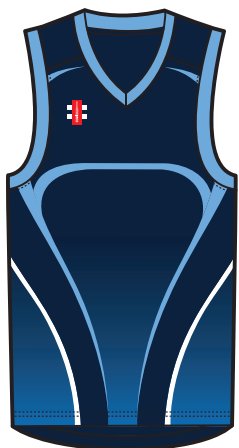
Design Code : 002



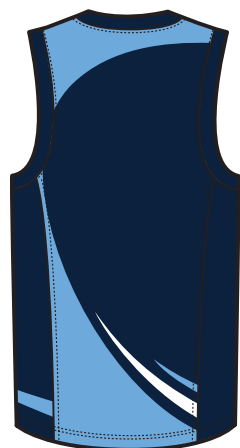
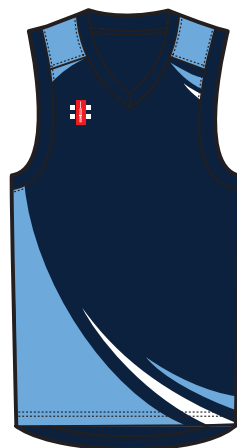
Design Code : 003



Design Code : 004



Design Code : 005



Design Code : 006

## Sublimated Velocity Sweaters

The Velocity Sweaters shown below are displayed as examples of sublimated printing. Any printable colour and design is possible and any design can be printed on any size sweater. Please select your own design or choose one of our coded designs shown below. Your logo, sponsor's logo and number can be then be added to suit your teamwear needs.

## Specifications

**Level:** First Class.

**Sizes:** Men's 2XS - 3XL Women's 6 - 18 Junior's 5/6 - 11/12 Yrs.

**Fabric:** G-Fleece 400.

**Minimum Order Quantity:** 12

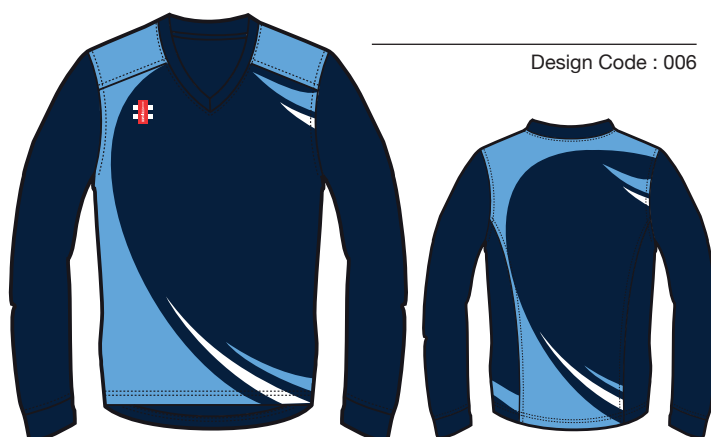
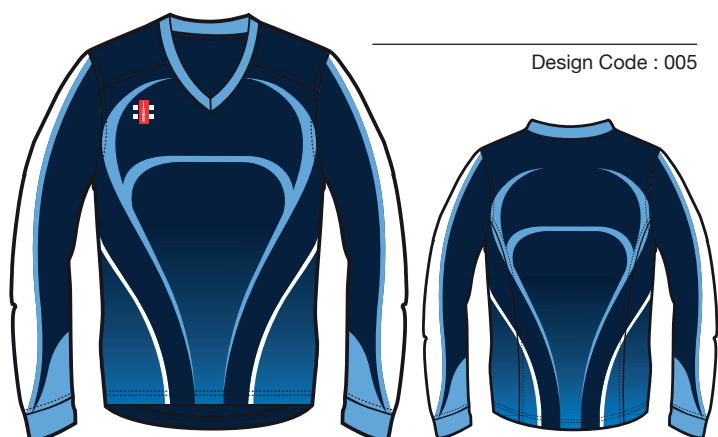
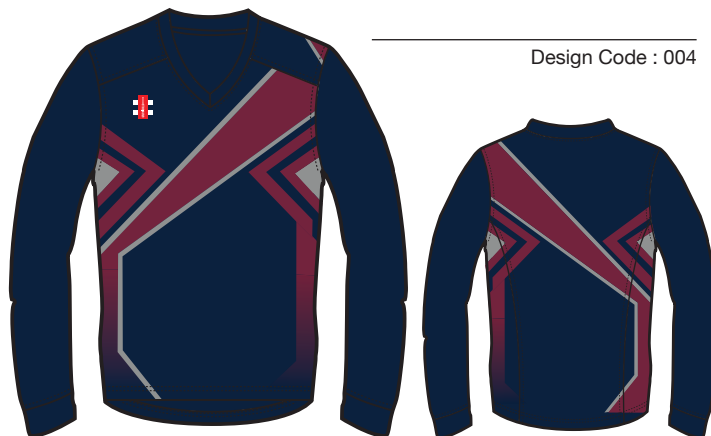
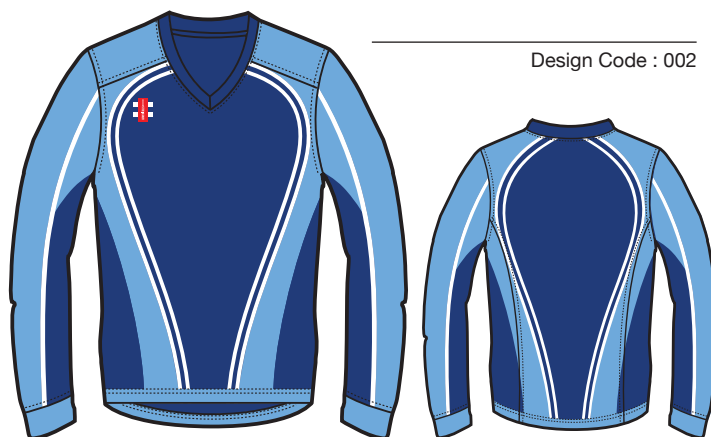
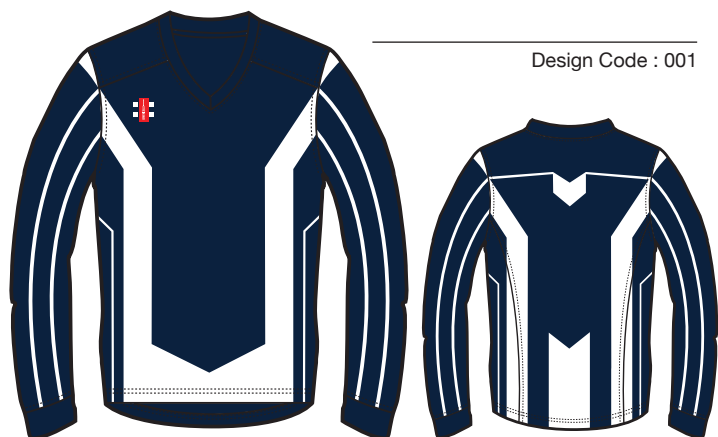
**Lead Time:** 8 weeks from order acceptance.  
(see order procedures on page 30).

Men's Code: 28902s

Women's Code: 27214s

Junior's Code: 27216s

## Sublimated Examples



For more detailed information, to place an order, or to discuss your requirements call: 01580 883120

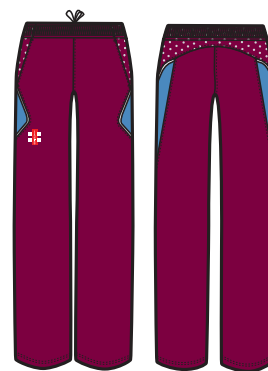


# Storm Range

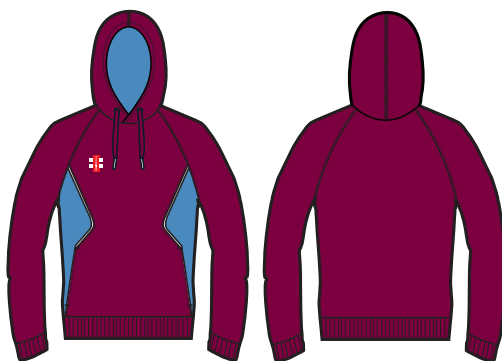
A first class collection, the Storm range has been created for all abilities by a leading team of specialist sportswear designers. Ideal for cricketers, coaches and supporters, for professional performance both on and off the pitch.



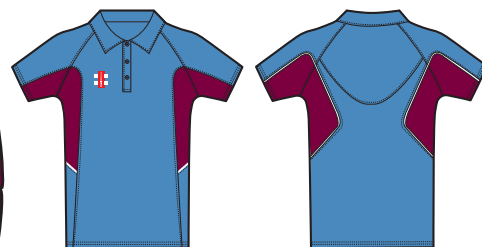
Storm Track Top (page 19)



Storm Track Trousers (page 19)



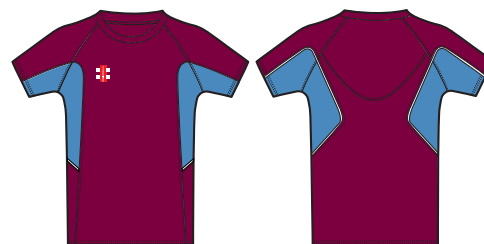
Storm Hoodie (page 16)



Matrix Polo Shirt (page 21)



Storm Shorts (page 22)



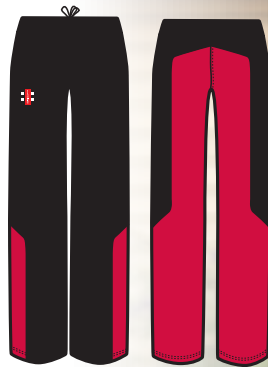
Matrix Tee Shirt (page 21)

# Revolution Range

Wearing the new Revolution range, your team will dominate and leave a lasting impression on the opposition, before you even take to the pitch. This comprehensive collection offers comfort and style for all levels of play and provides your club with an outstanding teamwear solution.



Revolution Track Top (page 18)



Revolution Track Trousers (page 18)



Revolution Hoodie (page 16)



Vapour Polo Shirt (page 20)



Vapour Gym Shorts (page 22)



Vapour Tee Shirt (page 20)



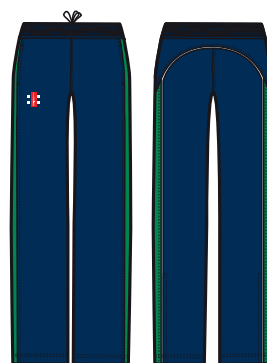


# Pro Team Range

The Pro Team collection will make any team feel first class. Influenced by our leading portfolio of players, this premier and elite professional range, with its technical fabrics and functional fit, will unite your team into an impressive force to be reckoned with.



Pro Team Track Top (page 18)



Pro Team Track Trousers (page 18)



Pro Team Hoodie (page 16)



Pro Team Polo Shirt (page 20)



Pro Team Tee Shirt (page 20)



## Storm Shower Jacket - Stocked Item

Breathable weather protection that optimizes body temperature while allowing heat and sweat to escape through evaporation. Internal hem cord lock adjuster helps to keep draughts out. Cuff adjusters to hold garment in place and 2 zipped pockets.

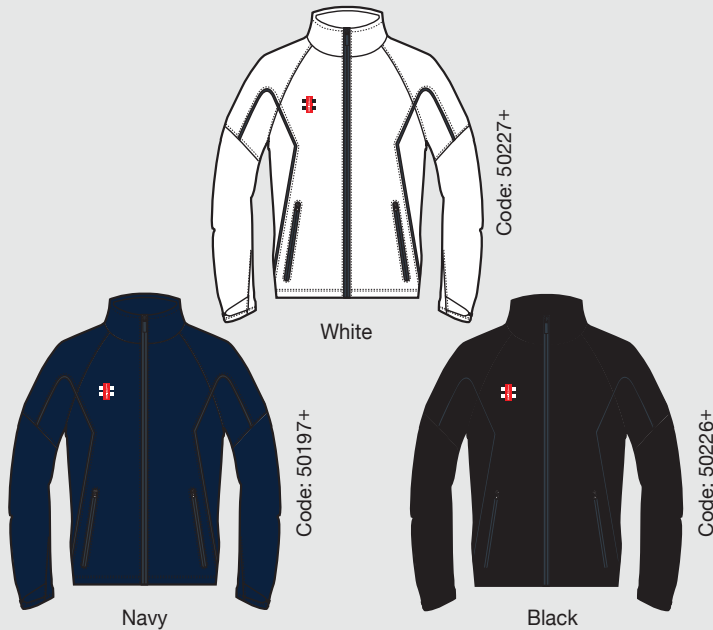
**Level:** All levels.

**Sizes:** Men's 2XS - 2XL Junior's 9/10 - 11/12 Yrs.

**White Shower Jacket:** Men's 2XS - 3XL only.

**Fabric:** G-WP 755.

Available from stock in one week as shown. Your logo/sponsor's logo and number can be added and supplied in 3 weeks from sign-off.



## Storm Shower Jacket - Made To Order

Storm Shower Jackets can be made to order in your chosen colours.

**Level:** All levels.

**Sizes:** Men's 2XS - 3XL Women's 6 - 20 Junior's 5/6 - 11/12 Yrs.

**Fabric:** G-WP 750.

**Minimum Order:** 12.

**Lead Time:** 8 weeks from order acceptance.  
(see order procedures on page 30).



Please use the colour palette below to choose fabric colours for the panels on this garment.

### STORM SHOWER JACKET COLOUR OPTIONS



Men's Code: 27056s  
Women's Code: 27074s  
Junior's Code: 27075s

## Pro Team Shower Jacket - Made To Order

Breathable, water resistant jacket with a specific panel design made to compliment the Pro Team range.

Pro Team Shower Jackets can be made to order in your chosen colours.

**Level:** All levels.

**Sizes:** Men's 2XS - 3XL Women's 6 - 20 Junior's 5/6 - 11/12 Yrs.

**Fabric:** G-WP 750.

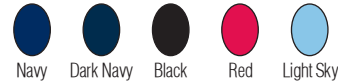
**Minimum Order:** 12

**Lead Time:** 8 weeks from order acceptance.  
(see order procedures on page 30).



Please use the colour palette below to choose fabric colours for the panels on this garment.

### PRO TEAM JACKET COLOUR OPTIONS



## Revolution 1/2 Zip Jacket - Made To Order

A full zip shower resistant jacket with mesh lining and a pack-away, adjustable hood.

Revolution Jackets can be made to order in your chosen colours.

**Level:** All levels.

**Sizes:** Men's 2XS - 3XL Women's 6 - 20 Junior's 5/6 - 11/12 Yrs.

**Fabric:** G-WP 500 Revolution.

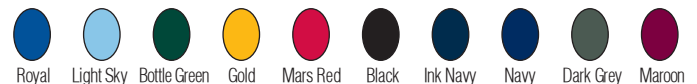
**Minimum Order:** 24

**Lead Time:** 8 weeks from order acceptance.  
(see order procedures on page 30).



Please use the colour palette below to choose fabric colours for the panels on this garment.

### REVOLUTION 1/2 ZIP JACKET COLOUR OPTIONS



Men's Code: 27032s  
Women's Code: 27035s  
Junior's Code: 27037s

## Vapour Hoodie - Made To Order

A comfortable hoodie with soft cotton-feel fabric for warmth. Lined hood with drawcord (adults only), kangaroo pouch pocket and piping detail.

Vapour Hoodies can be made to order in your chosen colours.

**Level:** All levels.

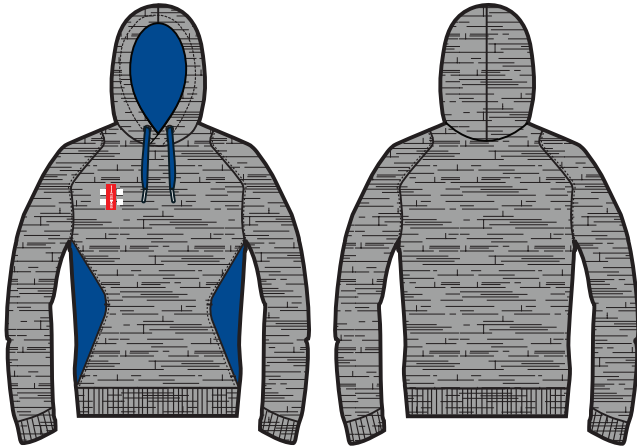
**Sizes:** Men's 2XS - 3XL Women's 6 - 20 Junior's 5/6 - 11/12 Yrs.

**Fabric:** G-Fleece 500.

**Minimum Order:** 12

**Lead Time:** 8 weeks from order acceptance.

(see order procedures on page 30).



Men's Code: 27103s  
Women's Code: 27131s  
Junior's Code: 27163s

Please use the colour palette below to choose fabric colours for the panels on this garment.

## Storm Hoodie - Made To Order

Storm Hoodies can be made to order in your chosen colours.

**Level:** All levels.

**Sizes:** Men's 2XS - 3XL Women's 6 - 20 Junior's 5/6 - 11/12 Yrs.

**Fabric:** G-Fleece 500.

**Minimum Order:** 12

**Lead Time:** 8 weeks from order acceptance.

(see order procedures on page 30).



Men's Code: 27071s  
Women's Code: 27073s  
Junior's Code: 27072s

Please use the colour palette below to choose fabric colours for the panels on this garment.

### VAPOUR / STORM HOODIE COLOUR OPTIONS



## Pro Team Hoodie - Made To Order

A comfortable hoodie with soft cotton-feel fabric for warmth. Lined hood with drawcord (adults only), kangaroo pouch pocket and piping detail.

Vapour Hoodies can be made to order in your chosen colours.

**Level:** All levels.

**Sizes:** Men's 2XS - 3XL Women's 6 - 20 Junior's 5/6 - 11/12 Yrs.

**Fabric:** G-Fleece 500.

**Minimum Order:** 12

**Lead Time:** 8 weeks from order acceptance.

(see order procedures on page 30).



Men's Code: 27060s  
Women's Code: 27188s  
Junior's Code: 27195s

Please use the colour palette below to choose fabric colours for the panels on this garment.

## Revolution Hoodie - Made To Order

A comfortable hoodie with a soft-feel fabric for warmth. Kangaroo pouch pocket and piping detail. Designed to compliment the Revolution range.

Revolution Hoodies can be made to order in your chosen colours.

**Level:** All levels.

**Sizes:** Men's 2XS - 3XL Women's 6 - 20 Junior's 5/6 - 11/12 Yrs.

**Fabric:** G-Fleece 500.

**Minimum Order:** 12

**Lead Time:** 8 weeks from order acceptance.

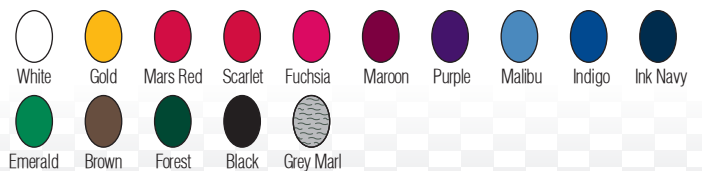
(see order procedures on page 30).



Men's Code: 27054s  
Women's Code: 27180s  
Junior's Code: 27179s

Please use the colour palette below to choose fabric colours for the panels on this garment.

### PRO TEAM / REVOLUTION HOODIE COLOUR OPTIONS



## Storm Hoodie - Stocked Item

A comfortable hoodie with soft cotton feel fabric for warmth. Features include a lined hood with draw cord (adults only), kangaroo pouch pocket and piping detail.

**Level:** All levels.

**Sizes:** Men's 2XS - 2XL Junior's 5/6 - 11/12 Yrs.

**Fabric:** G-Fleece 505.

Available from stock in one week as shown. Your logo/sponsor's logo and number can be added and supplied in 3 weeks from sign-off.



Navy



Black

## Storm Sweat Pants - Stocked Item

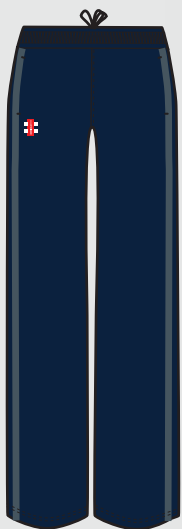
Designed for warmth. The sweat pants are manufactured from the same soft cotton feel fabric to compliment the Storm Hoodie, A comfortable straight leg with elasticated waist and drawcord (adults only) and tonal stripe down the sides.

**Level:** All levels.

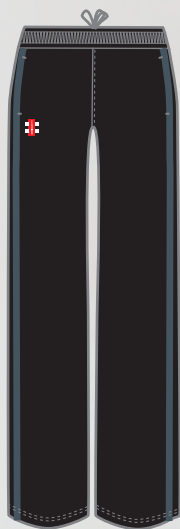
**Sizes:** Men's 2XS - 2XL Junior's 5/6 - 11/12 Yrs.

**Fabric:** G-Fleece 505.

Available from stock in one week as shown. Your logo/sponsor's logo and number can be added and supplied in 3 weeks from sign-off.



Navy



Black



## Revolution Track Top - Made To Order

A full-zip track top with a soft-feel lightweight fabric for comfort. Designed to wear with Revolution Track Trousers.

Revolution Track Tops can be made to order in your chosen colours.

**Level:** All levels.

**Sizes:** Men's 2XS - 3XL Women's 6 - 20 Junior's 5/6 - 11/12 Yrs.

**Fabric:** G-Com 700.

**Minimum Order:** 12

**Lead Time:** 8 weeks from order acceptance.  
(see order procedures on page 30).



Men's Code: 27051s  
Women's Code: 27132s  
Junior's Code: 27164s

Please use the colour palette below to choose fabric colours for the panels on this garment.

## Revolution Track Trousers - Made To Order

Elasticated waist and drawcord and knee-length zippers in a soft-feel lightweight fabric. Designed to wear with Revolution Track Trousers.

Revolution Track Trousers can be made to order in your chosen colours.

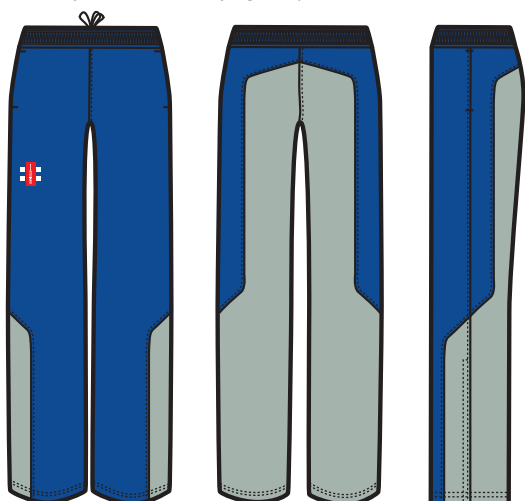
**Level:** All levels.

**Sizes:** Men's 2XS - 3XL Women's 6 - 20 Junior's 5/6 - 11/12 Yrs.

**Fabric:** G-Com 700.

**Minimum Order:** 12

**Lead Time:** 8 weeks from order acceptance.  
(see order procedures on page 30).



Men's Code: 27052s  
Women's Code: 27133s  
Junior's Code: 27165s

Please use the colour palette below to choose fabric colours for the panels on this garment.

### REVOLUTION TRACK TOP / TROUSER COLOUR OPTIONS



## Pro Team Track Top - Made To Order

A full-zip track top designed to compliment the Pro Team Track Trousers in a soft-feel lightweight fabric for comfort.

Pro Team Track Tops can be made to order in your chosen colours.

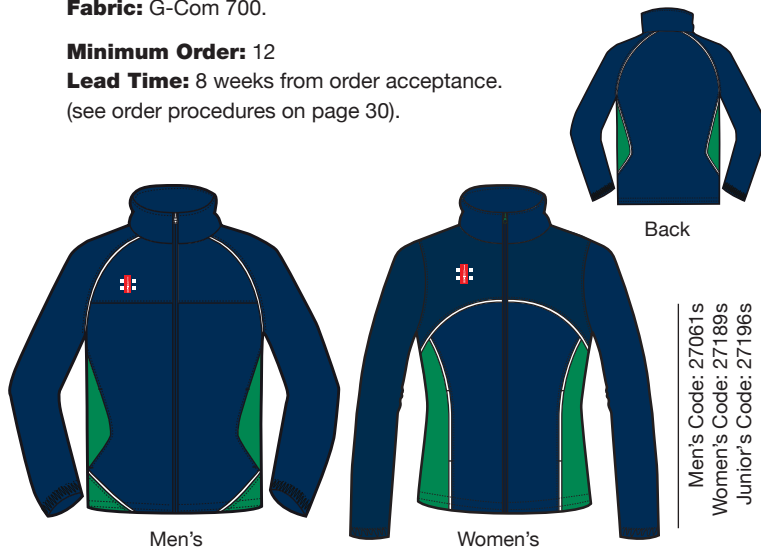
**Level:** All levels.

**Sizes:** Men's 2XS - 3XL Women's 6 - 20 Junior's 5/6 - 11/12 Yrs.

**Fabric:** G-Com 700.

**Minimum Order:** 12

**Lead Time:** 8 weeks from order acceptance.  
(see order procedures on page 30).



Men's Code: 27061s  
Women's Code: 27189s  
Junior's Code: 27196s

Please use the colour palette below to choose fabric colours for the panels on this garment.

## Pro Team Track Trouser - Made To Order

Elasticated waist and drawcord and knee-length zippers in a soft-feel lightweight fabric. Designed to be worn with the Pro Team Track Top.

Pro Team Track Trousers can be made to order in your chosen colours.

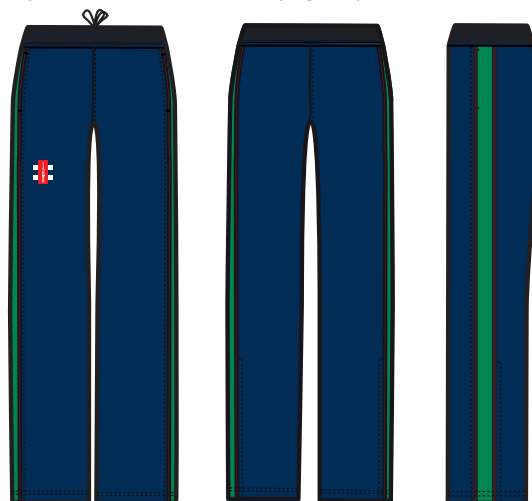
**Level:** All levels.

**Sizes:** Men's 2XS - 3XL Women's 6 - 20 Junior's 5/6 - 11/12 Yrs.

**Fabric:** G-Com 700.

**Minimum Order:** 12

**Lead Time:** 8 weeks from order acceptance.  
(See order information on page 30).



Men's Code: 27062s  
Women's Code: 27190s  
Junior's Code: 27197s

Please use the colour palette below to choose fabric colours for the panels on this garment.

### PRO TEAM TRACK TOP / TROUSER COLOUR OPTIONS



## Storm Track Top - Made To Order

A full-zip track top designed to compliment the Storm Track Trousers in a combination of soft-feel and lightweight fabrics.

Storm Track Tops can be made to order in your chosen colours.

**Level:** All levels.

**Sizes:** Men's 2XS - 3XL Women's 6 - 20 Junior's 5/6 - 11/12 Yrs.

**Fabric:** G-Com 700 / G-Lite 500.

**Minimum Order:** 12

**Lead Time:** 8 weeks from order acceptance.

(See order information on page 30)



Men's Code: 28174s  
Women's Code: 28906s  
Junior's Code: 28186s

Please use the colour palette below to choose fabric colours for the panels on this garment.

## Storm Track Trousers - Made To Order

Storm Track Trousers can be made to order in your chosen colours.

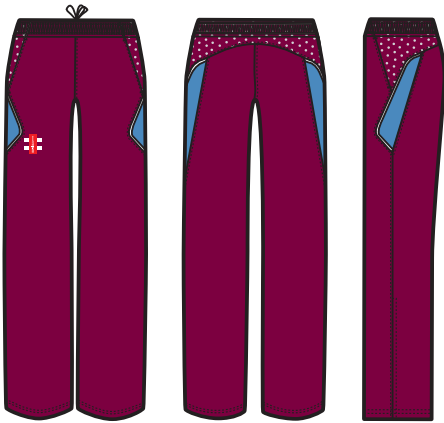
**Sizes:** Men's 2XS - 3XL Women's 6 - 20 Junior's 5/6 - 11/12 Yrs.

**Fabric:** G-Com 700 / G-Lite 500.

**Minimum Order:** 12.

**Lead Time:** 8 weeks from order acceptance.

(see order procedures on page 30).



Men's Code: 28175s  
Women's Code: 28907s  
Junior's Code: 28187s

Please use the colours palettes below to choose fabric colours for the main body and contrast panels on this garment.

### STORM TRACK TOP / TROUSER MAIN PANEL OPTIONS



### STORM TRACK TOP / TROUSER CONTRAST PANEL OPTIONS



## Storm Track Trousers - Stocked Item

Cricket-specific fit engineered to move naturally with the body. Key heat and ventilation zones to assist the athlete with temperature regulation regardless of the conditions. Ventilation areas allow air to flow close to the skin and draw heat from the legs. Featuring elasticated waist. (Draw-cord adult only) Adults with zip at lower leg, kids with elasticated ankle.

**Level:** All levels.

**Sizes:** Men's 2XS - 2XL Junior's 5/6 - 11/12 Yrs.

**Fabric:** G-Com 705.

Available from stock in one week as shown. Your logo/sponsor's logo and number can be added and supplied in 3 weeks from sign-off.



Navy

Black

Code: 50199+

Code: 50229+

## Synergie Track Trousers - Made To Order

Elasticated waist with drawcord, long leg-zipper to hip for ease of use and a cotton jersey lining to knee for comfort.

Synergie Track Trousers can be made to order in your chosen colours.

**Level:** All levels.

**Sizes:** Men's 2XS - 3XL Women's 6 - 20 Junior's 5/6 - 11/12 Yrs.

**Fabric:** G-Com 500.

**Minimum Order:** 12.

**Lead Time:** 8 weeks from order acceptance.

(see order procedures on page 30).



Men's Code: 27053s  
Women's Code: 27135s  
Junior's Code: 27172s

Please use the colour palette below to choose fabric colours for the panels on this garment.

### SYNERGIE TROUSER COLOUR OPTIONS



## Vapour Polo Shirt - Made To Order

Manufactured from performance fabrics with soft-feel and moisture management properties to keep you cool.

Vapour Polo Shirts can be made to order in your chosen colours.

**Level:** All levels.

**Sizes:** Men's 2XS - 3XL Women's 6 - 20 Junior's 5/6 - 11/12 Yrs

**Fit Style:** Available in short sleeve only.

**Fabric:** G-Lite 600.

**Minimum Order:** 12

**Lead Time:** 8 weeks from order acceptance.  
(see order procedures on page 30).



Men's Code: 28870s  
Women's Code: 27129s  
Junior's Code: 28960s

Please use the colour palette below to choose fabric colours for the panels on this garment.

## Vapour Tee Shirt - Made To Order

Moisture-controlling materials allow air to flow close to the skin and draw heat away from the body.

Vapour Tee Shirts can be made to order in your chosen colours.

**Level:** All levels.

**Sizes:** Men's 2XS - 3XL Women's 6 - 20 Junior's 5/6 - 11/12 Yrs.

**Fit Style:** Available in short sleeve only.

**Fabric:** G-Lite 600.

**Minimum Order:** 12

**Lead Time:** 8 weeks from order acceptance.  
(see order procedures on page 30).



Men's Code: 28871s  
Women's Code: 27130s  
Junior's Code: 28961s

Please use the colour palette below to choose fabric colours for the panels on this garment.

### VAPOUR POLO / TEE SHIRT COLOUR OPTIONS



## Pro Team Polo Shirt - Made To Order

A Lightweight polo shirt with unique panelling made from moisture management materials. 3 button placket and collar for UV protection.

Pro Team Polo Shirts can be made to order in your chosen colours.

**Level:** All levels.

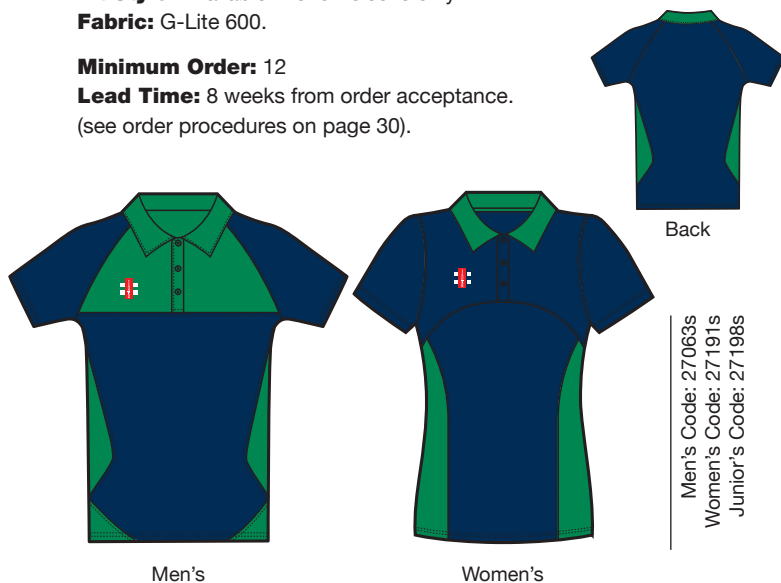
**Sizes:** Men's 2XS - 3XL Women's 6 - 20 Junior's 5/6 - 11/12 Yrs.

**Fit Style:** Available in short sleeve only.

**Fabric:** G-Lite 600.

**Minimum Order:** 12

**Lead Time:** 8 weeks from order acceptance.  
(see order procedures on page 30).



Men's

Women's

Back

Men's Code: 27063s  
Women's Code: 27191s  
Junior's Code: 27198s

Please use the colour palette below to choose fabric colours for the panels on this garment.

## Pro Team Tee Shirt - Made To Order

A lightweight tee shirt with unique panelling made from moisture management materials. Designed to compliment the Pro Team range.

Pro Team Tee Shirts can be made to order in your chosen colours.

**Level:** All levels.

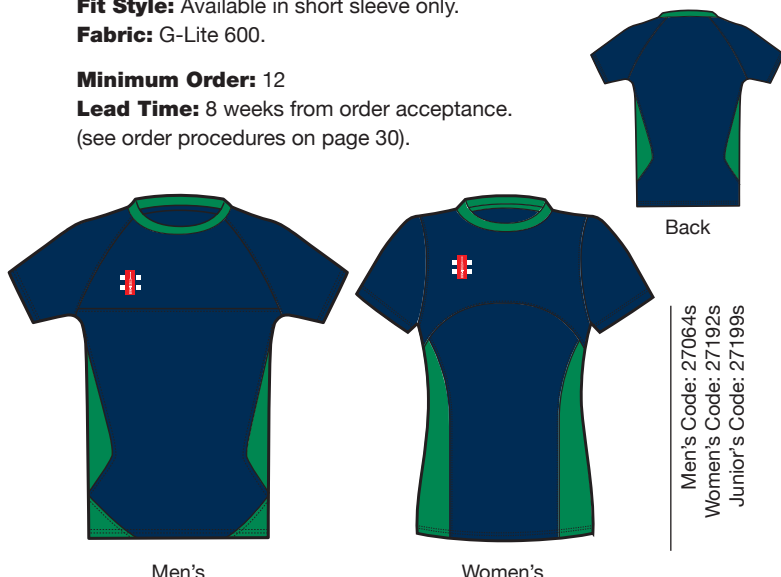
**Sizes:** Men's 2XS - 3XL Women's 6 - 20 Junior's 5/6 - 11/12 Yrs.

**Fit Style:** Available in short sleeve only.

**Fabric:** G-Lite 600.

**Minimum Order:** 12

**Lead Time:** 8 weeks from order acceptance.  
(see order procedures on page 30).



Men's

Women's

Back

Men's Code: 27064s  
Women's Code: 27192s  
Junior's Code: 27199s

Please use the colour palette below to choose fabric colours for the panels on this garment.

### PRO TEAM POLO / TEE SHIRT COLOUR OPTIONS



## Matrix Polo Shirt - Made To Order

Matrix Polo Shirts can be made to order in your chosen colours.

**Level:** All levels.

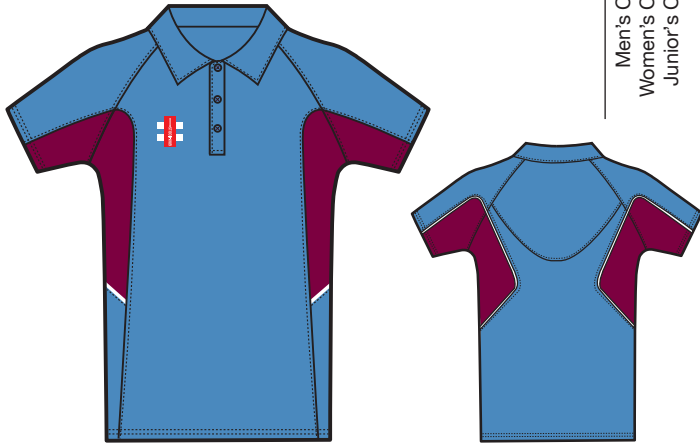
**Sizes:** Men's 2XS - 3XL Women's 6 - 20 Junior's 5/6 - 11/12 Yrs.

**Fit Style:** Available in short sleeve only.

**Fabric:** G-Lite 600.

**Minimum Order:** 12

**Lead Time:** 8 weeks from order acceptance.  
(see order procedures on page 30).



Men's Code: 289555  
Women's Code: 270699  
Junior's Code: 289566

Please use the colour palette below to choose fabric colours for the panels on this garment.

## Matrix Tee Shirt - Made To Order

Matrix Tee Shirts can be made to order in your chosen colours.

**Level:** All levels.

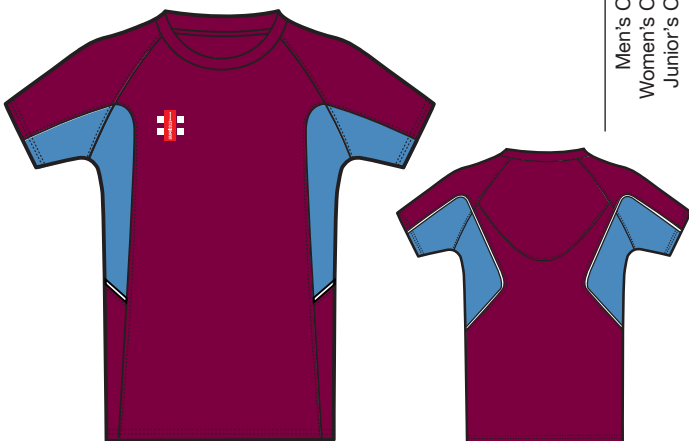
**Sizes:** Men's 2XS - 3XL Women's 6 - 20 Junior's 5/6 - 11/12 Yrs.

**Fit Style:** Available in short sleeve only.

**Fabric:** G-Lite 600.

**Minimum Order:** 12

**Lead Time:** 8 weeks from order acceptance.  
(see order procedures on page 30).



Men's Code: 289575  
Women's Code: 270705  
Junior's Code: 289588

Please use the colour palette below to choose fabric colours for the panels on this garment.

### MATRIX POLO / TEE SHIRT COLOUR OPTIONS



## Matrix Polo Shirt - Stocked Item

Moisture controlling materials allow air to flow close to the skin and draw heat away from the body. The shaped panels contour the body for great fitting garment. Smart 3 button placket and collar for UV protection.

**Level:** All levels.

**Sizes:** Men's: 2XS - 2XL Junior's: 5/6 - 11/12 Yrs.

**Fit Style:** Available in short sleeve only.

**Fabric:** G-Lite 605.

Available from stock in one week as shown. Your logo/sponsor's logo and number can be added and supplied in 3 weeks from sign-off.



## Matrix Tee Shirt - Stocked Item

A classic crew neck for a comfortable fit.

**Level:** All levels.

**Sizes:** Men's 2XS - 2XL Junior's 5/6 - 11/12.

**Fit Style:** Available in short sleeve only.

**Fabric:** G-Lite 605.

Available from stock in one week as shown. Your logo/sponsor's logo and number can be added and supplied in 3 weeks from sign-off.



## Matrix Vest - Made To Order

A lightweight sleeveless vest designed to minimise perspiration. Matrix vests can be made to order in your chosen colours.

**Level:** All levels.

**Sizes:** Men's 2XS - 3XL Junior's 5/6 - 11/12 Yrs.

**Fabric:** G-Lite 600 / G-Mesh 400.

**Minimum Order:** 12

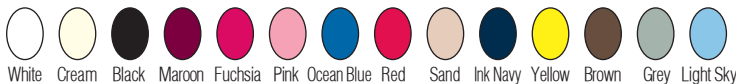
**Lead Time:** 8 weeks from order acceptance.



Men's Code: 27057s  
Junior's Code: 27245s

Please use the colour palette below to choose fabric colours for the panels on this garment.

### MATRIX VEST CONTRAST BACK PANEL COLOUR OPTIONS



## Vapour Vest - Made To Order

A lightweight sleeveless vest designed to minimise perspiration. Vapour Vests can be made to order in your chosen colours.

**Level:** All levels.

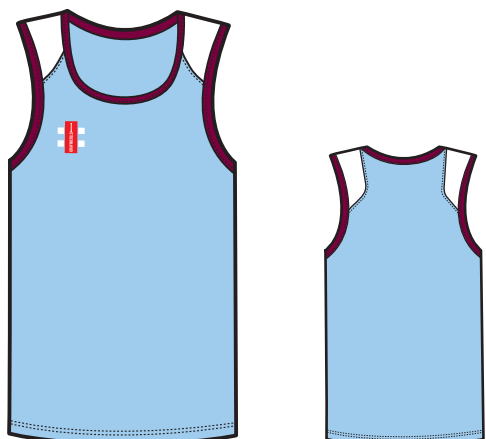
**Sizes:** Men's 2XS - 3XL Junior's 5/6 - 11/12 Yrs

**Fabric:** G-Lite 600

**Minimum Order:** 12

**Lead Time:** 8 weeks from order acceptance.

(See order information on page 30)



Men's Code: 28872s  
Junior's Code: 27087s

Please use the colour palette below to choose fabric colours for the panels on this garment.

### MATRIX/VAPOUR VEST MAIN BODY COLOUR OPTIONS



## Storm Shorts - Made To Order

Storm Shorts can be made to order in your chosen colours.

**Level:** All levels.

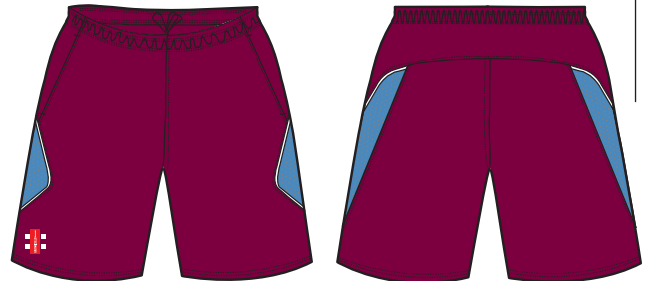
**Sizes:** Men's 2XS - 3XL Women's 6 - 20 Junior's 5/6 - 11/12 Yrs.

**Fabric:** G-Com 700 / G-Mesh.

**Minimum Order:** 12

**Lead Time:** 8 weeks from order acceptance.

(see order procedures on page 30).



Men's Code: 28176s  
Women's Code: 28959s  
Junior's Code: 28188s

Please use the colours palettes below to choose fabric colours for the main body and contrast panels on this garment..

### STORM SHORTS MAIN BODY COLOUR OPTIONS



### STORM SHORTS CONTRAST PANEL COLOUR OPTIONS



## Vapour Gym Shorts - Made To Order

Made from lightweight stretch fabric with elasticated waist and drawcord.

Vapour Gym Shorts can be made to order in your chosen colours.

**Level:** All

**Sizes:** Men's 2XS - 3XL Women's 6 - 20 Junior's 5/6 - 11/12 Yrs

**Fabric:** G-Com 500 / G-Lite 700

**Minimum Order:** 12

**Lead Time:** 8 weeks from order acceptance.



Men's Code: 28865s  
Women's Code: 27127s  
Junior's Code: 27159s

Please use the colours palettes below to choose fabric colours for the main body and contrast panels on this garment.

### VAPOUR SHORTS MAIN BODY COLOUR OPTIONS



### VAPOUR SHORTS CONTRAST PANEL COLOUR OPTIONS





## Storm Shorts - Stocked Item

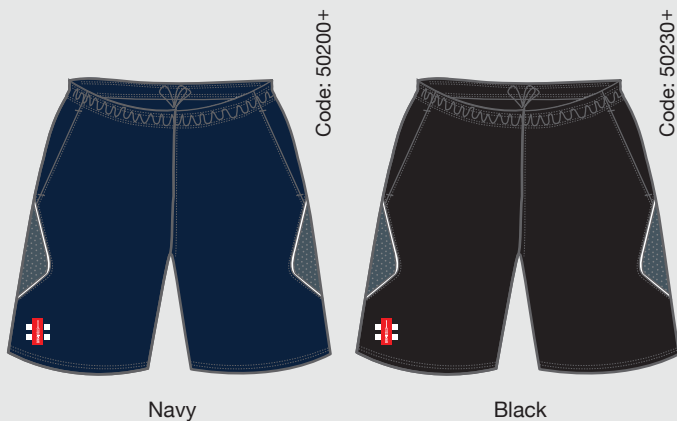
Lightweight cricket shorts engineered to move naturally with the body during sport for greater comfort. Key heat and ventilation zones to assist the athlete with temperature regulation regardless of the conditions and ventilation areas draw heat away from the legs. Inner mesh briefs and elasticated waist with drawcord (drawcord adults only).

**Level:** All levels.

**Sizes:** Men's 2XS - 2XL Junior's 5/6 - 11/12 Yrs.

**Fabric:** G-Com 705.

Available from stock in one week as shown. Your logo/sponsor's logo and number can be added and supplied in 3 weeks from sign-off.



## Storm Thermo Fleece - Stocked Item

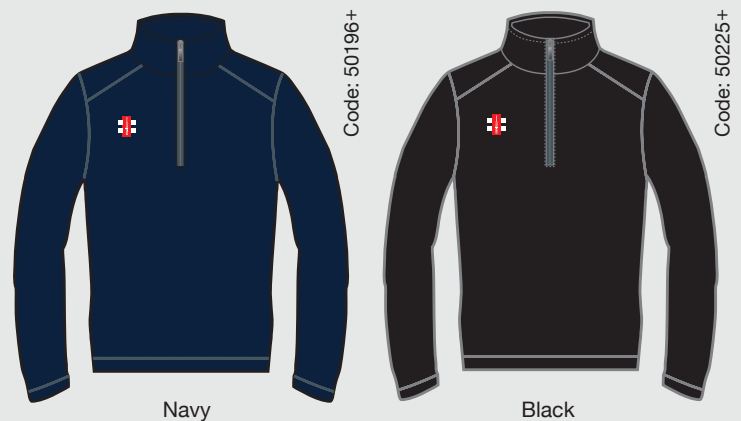
Sport-specific stretch fabrics allow the garment to move naturally with the body during the most strenuous activities. Stretch fleece is one of the most versatile fabrics for sports clothing thanks to its ability to provide warmth without weight. High collar and long sleeves make sure all of the areas you need covered quickly, are protected from the cold.

**Level:** All levels.

**Sizes:** Men's XS - 2XL.

**Fabric:** G-Fleece 705.

Available from stock in one week as shown. Your logo/sponsor's logo and number can be added and supplied in 3 weeks from sign-off.



## Polo Shirt - Stocked Item

A classic British sporting look, a plain polo shirt is a true wardrobe staple. Soft, easy wearing cotton pique fabric with collar and 3 button placket Ideal for use both on and off the field

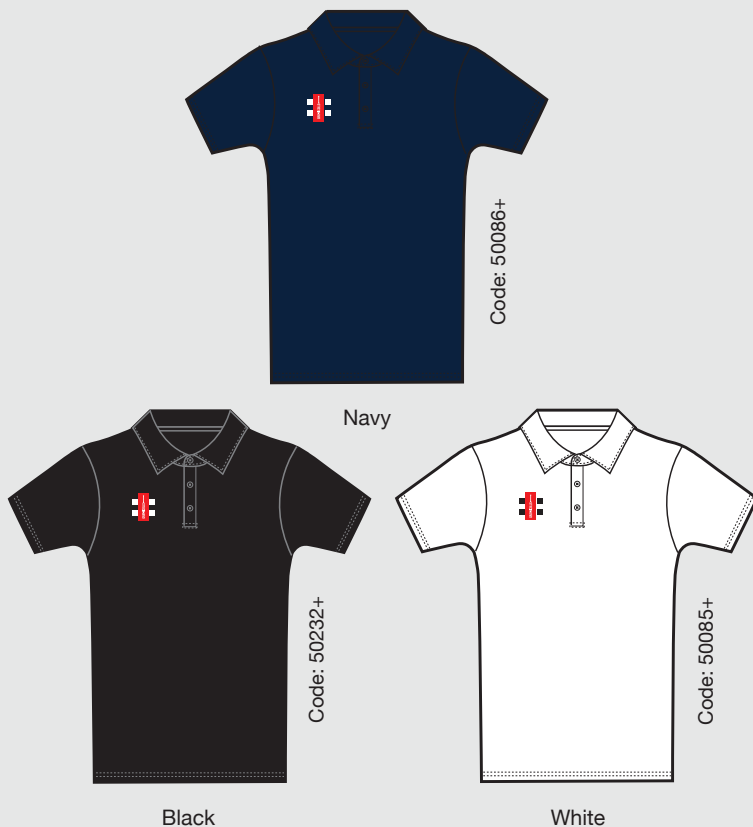
**Level:** All levels.

**Sizes:** Men's 2XS - 2XL Junior's 5/6 - 11/12 Yrs.

**Fit Style:** Available in short sleeve only.

**Fabric:** G-Pique 405.

Available from stock in one week as shown. Your logo/sponsor's logo and number can be added and supplied in 3 weeks from sign-off.



## Bamboo Tee - Stocked Item

Bamboo fabric is highly breathable in hot weather and significantly warmer in the cold than traditional fabrics, making it perfect for athletes requiring temperature regulation regardless of the conditions. Bamboo fabric is highly eco friendly and naturally inhibits the growth of bacteria. A cricket specific fit engineered to move naturally with the body during sport for greater comfort.

**Level:** First Class.

**Sizes:** Men's 2XS - 3XL Junior's 5/6 - 11/12 Yrs.

**Fit Style:** Available in short sleeve only.

**Fabric:** G-Wik 705.

Available from stock in one week as shown. Your logo/sponsor's logo and number can be added and supplied in 3 weeks from sign-off.



## Velocity Base Layer - Stocked Item

Designed for First Class performance taking into account the rigours of the game. With the tight fit that increases muscle power and makes you feel invincible at the wicket.

**Level:** All levels.

**Sizes:** Men's 2XS - 2XL.

**Fabric:** G-Base 705.

Available from stock in one week as shown. Your logo/sponsor's logo and number can be added and supplied in 3 weeks from sign-off.



Code: 50248+

## Velocity Jock Shorts - Stocked Item

**Level:** All levels.

**Sizes:** Men's 2XS - 2XL Junior's 9/10 - 11/12 Yrs

**Fabric:** G-Base 705



Code: 50247+

## Jock Strap/Briefs/Shorts - Stocked Item

**Level:** All levels.

**Sizes:** Men's SB - 2XL.

Available as from stock as shown.



Code: 50047+



Code: 50046+



Code: 50058+

## Matrix Cap - Stocked Item

**Level:** All levels.

**SIZE:** One size only.



Navy

Code: 5009505



Maroon

Code: 5009605



Green

Code: 5009705

## Cricket Cap - Stocked Item

**Level:** All levels.

**SIZE:** One size only.



Navy

Code: 532606



Maroon

Code: 532605



Green

Code: 532604

## Melton Cap Stocked Item

**SIZE:** One Size Only.



Black

Code: 532210



Green

Code: 532220



Navy

Code: 532240



Royal Blue

Code: 532250



Maroon

Code: 532230

## Sun Hat - Stocked Item

**Level:** All levels.

**Sizes:** S - XL



Cream

Code: 53231+

# Armour

## Atomic Helmets - Stocked Item

- Factory-fitted Apex grille with lateral armour.
- Integrated shock absorbers between helmet and grille.
- Interflow vent channels moulded into the helmet lining.

**Level:** Test.

**Sizes:** Men's 2XS/XS - L/XL .

Available from stock as shown. Your logo/sponsor's logo and number can be added.



## Test Opener Helmets - Made To Order

Test Opener helmets can be made to order in your chosen colour. Club Badges can be applied.

**Level:** Test.

**Sizes:** Senior, Boys or Junior's.

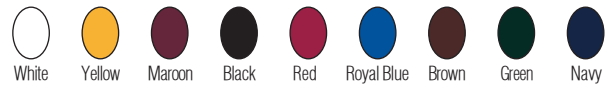
**Minimum Order:** 15.

**Lead Time:** 8 weeks from order acceptance. (See page 32).



Please use the colour palette below to choose fabric colours

### ATOMIC HELMETS FABRIC COLOUR OPTIONS



**HELMET SIZES** - All sizes are approximate (in centimetres). As a guide we provide the following information.

MODEL	2XS	XS	SMALL	MEDIUM	SENIOR/LARGE	X LARGE
Test Opener	51 - 52cm	53 - 54cm	55 - 56cm	57 - 58cm	58 - 60cm	61 - 62cm
Atomic	51 - 54cm		55 - 58cm		59 - 62cm	

## Oblivion Test Pads - Made To Order

Oblivion Test legguards can be made to order in your chosen colour.

**Level:** Test

**Sizes:** Small, Medium and Large

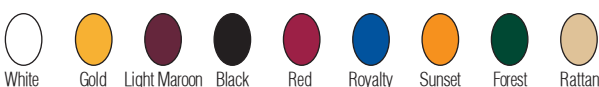
**Minimum Order:** 15

**Lead Time:** 8 weeks from order acceptance. (See page 32)



Please use colour palette below to choose colours for the front of the pads.

### OBLIVION TEST PAD COLOUR OPTIONS



## Oblivion Test WK Pads - Made To Order

Oblivion WK legguards can be made to order in your chosen colour.

**Level:** Test

**Sizes:** Small, Medium and Large

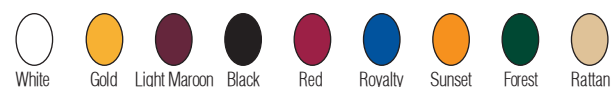
**Minimum Order:** 15

**Lead Time:** 8 weeks from order acceptance. (See page 32)



Please use colour palette below to choose colours for the front of the pads.

### OBLIVION TEST PAD COLOUR OPTIONS



**LEGGUARD SIZES** - All measurements are approximate from instep to middle of knee roll.

XSJ	SMALL JUNIOR	JUNIOR	YOUTHS	SMALL	MEDIUM	LARGE	X LARGE
30.5cm	33cm	35.5cm	38cm	40.5cm	43.5cm	46cm	48.5

### PLEASE NOTE

The colours displayed on this page are not matched to the clothing fabric colours.

## GN1000 Duffle Bag - Stocked Item

Premium quality duffle bag with innovative storage options.

**Level:** Test.

**Size (cm):** 90h x 40w x 40d.

**Number of Pockets:** 6.

### Features

- Large main storage area.
- Premium padded shoulder straps.
- Hard base for shoe storage.
- Flip lid with second pocket for helmet.
- 3 additional pockets.

Available from stock as shown. Your logo or sponsor's logo and number can be added.



Black / Red

Code: 5304601

## GN300 Holdall - Stocked Item

Value for money wheelie bag with side bat pocket and end shoe pocket.

**Level:** Club.

**Size (cm):** 75h x 30w x 34d cm.

**Number of Pockets:** 3.

### Features

- Large main storage area.
- Padded side bat pocket.
- Two additional valuables pockets.
- Wheelie system with hard wearing anti-scuff material.

Available from stock as shown. Your logo or sponsor's logo and number can be added.



Blue / Black

Code: 5305801



Red / Black

Code: 5305802

## Impact Duffle Bag - Stocked Item

Premium quality duffle bag with innovative storage options.

**Level:** First Class

**Size (cm):** 100h x 36w x 36d cm

**Number of Pockets:** 3

### Features

- Large main compartment.
- Side bat pocket.
- Lined valuables pocket.

Available from stock as shown. Your logo or sponsor's logo and number can be added.



Black / Fizz Green

Code: 5304801

## Club Rucksack - Stocked Item

Stylish rucksack. Ideal for touring or keeping clothing separate from main bag.

**Level:** All levels.

**Size (cm):** 45h x 32w x 20d.

**Number of Pockets:** 4.

Available from stock as shown. Your logo or sponsor's logo and number can be added.



Black / Red

Code: 5303501

# Leather Match Balls - Stock or MTO

Available from stock as shown. Your logo or sponsor's logo and number can be added.

**Minimum Order Quantity:** 120

**Lead Time:** 8 weeks from order acceptance.

(see order procedures on page 30).

## 1. Supertest Ball

Test match quality. 4 piece construction. Grade A. 5½oz.



Code: 540105

## 2. Warrior Ball

Top quality ball. Grade A. 5½oz..



Code: 540205

## 3. Test Special Ball

4 piece construction. Ideal for league use. 5½oz.



Code: 540405

## 4. League Ball

Top quality ball. 4¾ or 5½oz. red, pink, white or orange.



Red 4¾oz: 540504

6 Box 4¾oz: 540500

Red 5½oz: 540505

6 Box 5½oz: 540501

White 4¾oz: 543004

White 5½oz: 543005

Pink 4¾oz: 543104

Pink 5½oz: 543105

Orange 4¾oz: 5101904

Orange 5½oz: 5101905



Code: 543205

## 5. Ladies League Ball

Top quality 4 piece ball. 5oz only.



Code 4¾oz: 542604

Code 5½oz: 542605

## 6. Test Crown Ball

Top quality 4 piece ball. 4¾ or 5½oz.

## 7. Club Ball

Quality low cost ball. 4¾ or 5½oz.

## 8. Hurricane Ball

Good quality introductory ball. 4¾ or 5½oz.

## 9. Indoor Ball

Developed for indoor cricket.

# Training Balls - Stocked Item

## 1. Test Crown Technique Ball

• Halved leather ball for coaching. • 4¾ or 5½ oz.

## 2. Reverse Swing Ball

• Great fast bowling aid. • 4¾ or 5½ oz.  
• One side rough and one side smooth.  
• Ideal for coaching batting and bowling.

## 3. Bowling Machine Ball

• PVC moulded ball.

## 4. Training Ball

• Halved leather ball for coaching.  
• Ideal for promoting spinners grip.  
• 4oz Only.

## 5. Spin Ball

• Soft PVC ball ideal for indoor or outdoor use.  
• Shows finger positions to teach both leg and off spin techniques.

## 6. Quantum Ball

• Soft PVC safety ball with real six-stitch seam.  
• Colours: fluoro, orange or pink.

## 7. Wobbleball Outdoor

• EVA moulded ball • Cork centre  
• Ideal for catching and batting against the swinging ball.

## 8. Wobbleball Indoor

• PU foam ball • Cork centre.  
• Ideal for catching and batting against the swinging ball.

## 9. Velocity Ball

• Soft PVC ball.  
• Lightweight starter ball with realistic seam.  
Colours: red, white or pink.

## 10. Swing Ball

• Half Tennis ball - half PVC construction.  
• Ideal for developing swing bowling skills.

## 11. Tennis Ball / Mini Tennis Ball

• Ideal for batting with a shadow  
• bat and catching practice.

## 12. Catch Reactor

• Ideal for reflex catching and to improve reaction time.  
• Test hand/eye coordination.  
• Ideal for fielding practice and coaching.

## 13. Wonderball

• Safety ball with real 6-Stitch seam.  
• Colours: red, swing, orange, white, pink or lightweight.  
• Ideal for fielding practice and coaching.



Code 4¾oz: 540904

Code 5½oz: 540905



Code 4¾oz: 546604

Code 5½oz: 546605



Code: 5101305



Code: 5102004



Code: 5102405



Pink: 543305

Fluoro: 543405

Orange: 543505



Code: 5102305



Code: 546505



Red: 5100605

White: 5100705

Pink: 5100805



Code: 5102505



Tennis Ball: 925013

Mini Tennis Ball: 5100101



Red: 542205



Red 4¾oz: 545204

6 Box 4¾oz: 545200

Red 5½oz: 545205

6 Box 5½oz: 545201

Orange 4¾oz: 545804

Orange 5½oz: 545805

White 4¾oz: 546704

White 5½oz: 546705

Pink 4¾oz: 546804

Pink 5½oz: 546805

Swing 4¾oz: 5102104

Swing 5½oz: 5102105

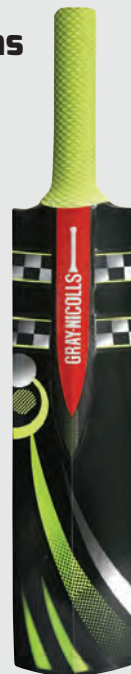
Light 4¾oz: 5102204

Light 5½oz: 5102205

# Training Accessories - Stocked Items

## 1. Cloud Catcher

For assisting with catching and fielding skills. HD foam on the face of the blade catapults the ball at realistic speed to enhance the skill levels of your team.  
Size: One Size Only



1.

## 2. Fielding Bat

Simple to use and easy to generate additional height and pace to your fielding drills.

- Ideal for short or long catching practice.
- Made from the finest English Willow to ensure realistic performance and rebound.
- Standard length handle to allow for realistic nicking drills – developed by Andy Flower, former England Head Coach.

Size: one size only

Code: 120004



2.

Code: 1121106



3.

Code: 1111600

## 3. Powerbow Cricket Set

Plastic set containing 2 size 5 bats, 2 sets of stumps and 2 balls in a strong carry case.  
Size: one size only

## 4. Baseball Gloves

Available in right or left-handed. Ideal for coaches.  
Size: one size only



4.

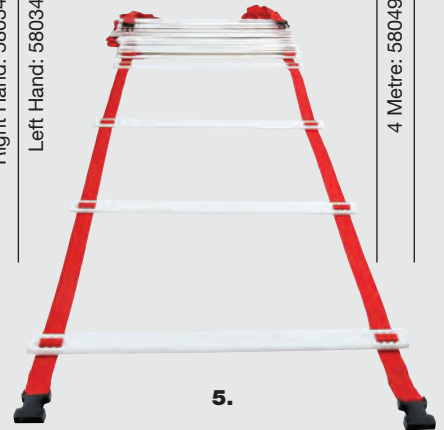
Right Hand: 5803451

Left Hand: 5803452

## 5. Speed Ladders

- Designed to develop fast footwork and running techniques.
- Fabric-covered plastic rods suitable for indoor use.
- Complete set, including bag.

Sizes: 4 or 8 metres



5.

4 Metre: 5804901

8 Metre: 5804902

## 6. Skipping Rope

9ft speed rope Ideal for fitness and speed drills.



6.

Cdoe: 5805201

## 7. Squeezy Whistle

- Squeeze to whistle.
- Non-oral hygienic device (can be shared).



7.

Cdoe: 86880044

## 8. Agility Hurdles

Step training hurdles for agility training and plyometric jumps.  
Sizes: Available in 6", 9" or 12"  
Sold in sets of 8



8.

6 inch: 5805102

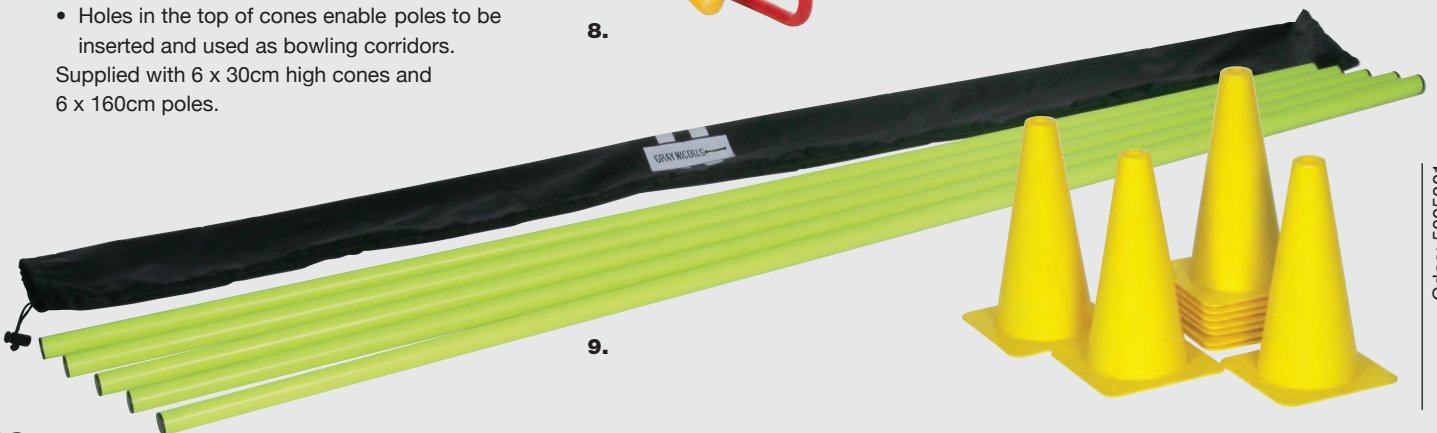
9 inch: 5805104

12 inch: 5805106

## 9. Cone Set

- Plastic cones for marking out work areas.
- Holes in the top of cones enable poles to be inserted and used as bowling corridors.

Supplied with 6 x 30cm high cones and 6 x 160cm poles.



9.

Cdoe: 5805001

## Pitch Accessories - Stocked Item

### 1. Spring Return Stumps

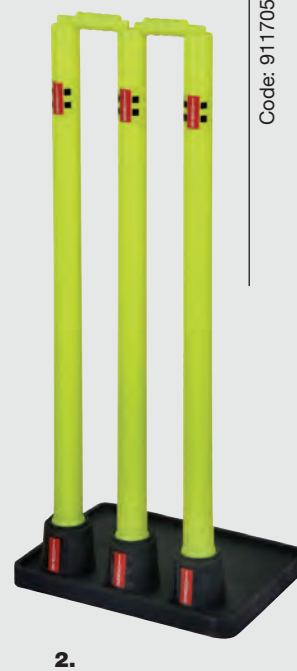
- Spring-loaded stumps.
- Easily portable.
- Set of 3 stumps and bails included.



1.

### 2. Rubber Based Stumps

- Three plastic stumps on solid rubber base.
- Ideal for match or net training.



2.

### 3. Target Stumps

- Single plastic stump with a spike base.
- Ideal for fielding or bowling training.
- Available in 28" or 14".



3.

### County Stumps (Not Illustrated)

- Made from English ash – ideal for top level matches. 28" only.
- Set of 6 stumps & bails included.

Code: 911105

### Club Stumps (Not Illustrated)

- Ideal for club and school use.
- Available in 28".
- Set of 6 stumps and bails included.

Code: 911305

### Stump Gauge

- Made from cast iron.
- For positioning stumps on natural turf.
- Available in men's width setting.

### County Bails (Not Illustrated)

- Made from Ash.
- Available in men's and youth's width settings.

Code (Youth's): 911203

Code (Men's): 911205

### Heavy Bails (Not Illustrated)

- Ideal for use in strong wind conditions.

Code (Heavy Bails): 911209

### 4. Portable Scoreboard

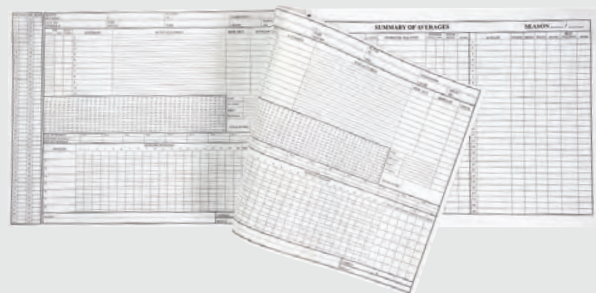
- Ideal for the club or school.
- Strong, manageable carry case.
- Size: L 122 x D 40cm.



4.

### 5. Score Books

- 112 Innings / 80 Innings / 60 Innings.



5.

### 6. Water Bottle

- 750ml water bottle with sports cap.



6.

### 7. Bowlers Markers

- Sold as a pair.



7.

### 8. Umpires Counters

- Useful counting aid.



8.

# Order Procedures

Below we have laid out clearly the processes you will experience and the requirements that you will need to fulfil in order for us to quickly and accurately action your teamwear order. Each option has different complexities and requirements, which are detailed below. Throughout the process, your local Gray-Nicolls representative and the design team will make sure that you are kept up to speed at every stage of the production process, prior to delivery.

**For more detailed information, to place an order or to discuss a specific requirement call 01580 883120**

## OPTION 1

### SUBLIMATED TEAMWEAR

Our team will work with you, creating a series of design options for you to choose from. They will guide you through the entire process making sure that you are kept informed at all times.

#### 1. Design consultation

You can chose a set design or we can create a new design and/or work with you, using your existing strip as the basis for your teamwear design. If you would like us to develop a completely new and unique design, there may be an extra charge.

#### 2. Supply crests and logos in digital format and advise quantities and personalisation

All artwork for crest/logos and sponsor logos must be supplied in digital format; preferably vector EPS files, PDF, AI/CDR formats or a DST file for embroidery. If these files are not available, there may be a re-draw charge. If you require personalisation (e.g. numbers/player names/initials) please send us written details for each size of garment you require.

#### 3. Approval of Final Digital Proof and Proforma

Once you have agreed the design and logos, we will ask you to approve a Final Digital Proof ("FDP") and a Proforma. The FDP shows you the garment, with all logos/crests, the quantity required by size and any personalisation required. The Proforma will show the price, payment terms and the email address we will use when we need to contact you. It is important that both documents are checked carefully.

#### 4. Order Acceptance

On receipt of your approval (and if required your payment/deposit) we will accept the order and advise you of the expected delivery date.

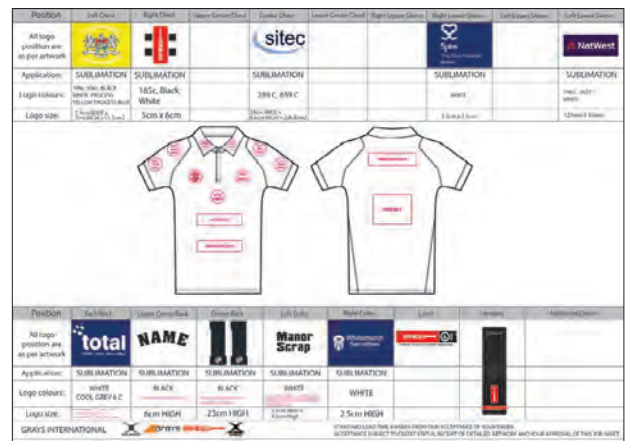
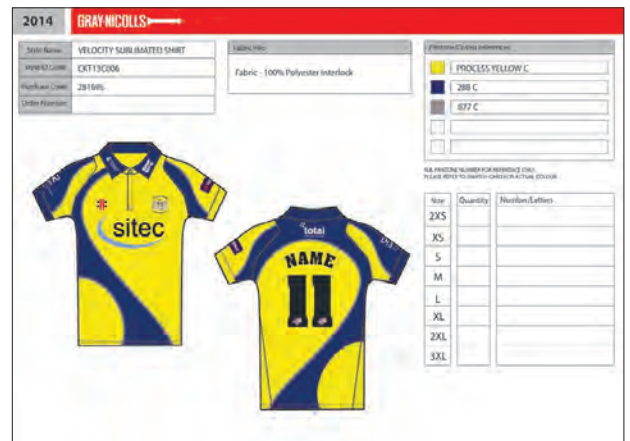
#### 5. Pre-production checks

Prior to starting production we will e-mail you two sample images to make sure the factory has properly understood your order. Production will be held until we receive your approval to avoid delaying your order, we ask that you e-mail your approvals within 3 days of receiving each image. The first will be the factory proofs showing the sublimated colours and design. The second will show the detail of your logos. Please check each image very carefully as the designs you approve will be what is made. For a charge, if you wish to approve an actual physical "factory proof" rather than approve an e-mailed image, you should add 2 weeks to the standard lead-time. If you wish to approve a physical sample of the made up garment, you should add 3-4 weeks to the standard lead-time. Please allow a further 3-4 weeks from the time you confirm any further minor changes if you wish to receive another made up sample.

**Lead Time Guide - 8 weeks** from order acceptance



Phil Mustard of Durham CCC.



#### Sublimated Kit

Sample early stage design template prepared for customer approval.



#### Sublimated Kit

Sample 'Factory Pattern' proof



## OPTION 2

### MADE TO ORDER (“MTO”) TEAMWEAR

The simplest way to create teamwear in your own colour combination.

#### 1. Select MTO garments and choose colours

Tell us the garment code (ends with an S) of the garment you would like us to make and then choose from the MTO colours offered for that garment. We have standardised the names of colours across our range to help you choose garments that are made in similar colours. For example, if you are ordering a garment in “RED” it will be a similar shade of red to another garment available in “RED” but a garment with a different name; e.g. “MARS RED” or “SCARLET” will be a different shade. If ordering garments with different names, we recommend you ask us to show you swatches before you place your order. If you are looking for colours to be very consistent across garments, we recommend you don't order garments with different colour names.

#### 2. Supply crests and logos in digital format

All artwork for crest/logos and sponsor logos must be supplied in digital format; preferably vector EPS files, PDF, AI/CDR formats or a DST file for embroidery. If these files are not available, there may be a re-draw charge. If you require personalisation (e.g. numbers/player names/initials) please send us written details for each size of garment you require.

#### 3. Approval of final digital proof and proforma

Once you have agreed the design and logos, we will ask you to approve a final digital proof (“FDP”) and a proforma. The FDP shows you the garment with all logos/crests, the quantity required by size and any number or name. The Proforma will show the price, payment terms and the e-mail address we will use when we need to contact you. It is important that both documents are checked carefully.

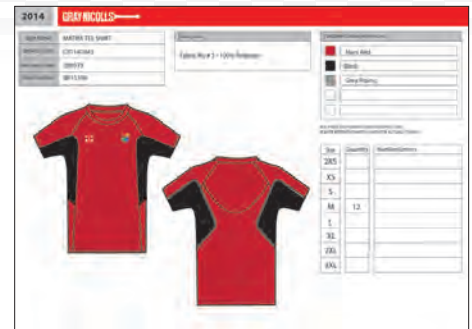
#### 4. Order Acceptance

On receipt of your approval (and if required your payment/deposit) we will accept the order and advise you of the expected delivery date.

#### 5. Pre-production check

Prior to starting production, we will e-mail you an image of each embellishment sample to make sure the factory has properly understood your requirements. Production will be held until we receive your approval. To avoid delaying your order, we ask that you e-mail your approval within 3 days of receiving the image(s). Please check each image very carefully as the embellishment you approve will be produced on your teamwear.

**Lead Time Guide - 8 weeks** from order acceptance.



#### Customised Kit

Sample early stage design template prepared for customer approval.

## OPTION 3

### EMBELLISHMENT OF STOCKED ITEMS

The quickest way to create teamwear with your identity.

#### 1. Approval of embellishments

Select the garments you require with size and quantity.

#### 2. Supply of all crests and logos

Before we can accept an order for embellished stocked items, we need to get your approval for each embellishment we are to supply. If you want us to make garments with a new crest/logo, you need to send details in digital format; preferably vector EPS files, PDF, AI/CDR format or a DST file for embroidery (if these files are not available there may be a re-draw charge). To prepare the right embellishment detail, we also need to know for each garment you require: the product code (Stocked garments end with a +), the specific colour name, the expected range of sizes and what personalisation (e.g. numbers and player names/initials) is needed. It is not necessary to supply the exact quantities and personalisation by size at this stage but it will speed the process if you can. We will then send you an image of sample embellishments for your review and approval. We can advise current stock levels at any stage of the process but we can only confirm stock availability once the order is accepted. Samples of stocked items can be supplied but they are chargeable to you. They will be credited 100% if returned within 2 weeks and in perfect re-saleable condition. If returned samples can't be resold (eg. missing tickets/packaging), or are returned late, we will not be able to credit 100%.

#### 2. Check all garments are the correct sizes before embroidery

Once you are happy with your embellishments and told us what you want, we will check that there is stock and then ask you to approve a final digital proof (“FDP”) and a proforma. The FDP shows you the garment with all logos/crests, the quantity required by size and any personalisation (e.g. numbers and player names/initials). The Proforma will show the price, payment terms and the

contact e-mail address. It is important that both documents are checked carefully.

#### 3. Order Acceptance

On receipt of your approval (and if required your payment/deposit) we will accept the order and advise you of the expected delivery date. Stock availability cannot be confirmed until the order is accepted, so to avoid the risk of stock-outs we ask that you approve the PDF/Proforma and make any required payment as quickly as possible.

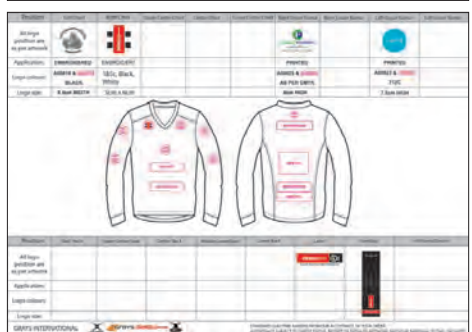
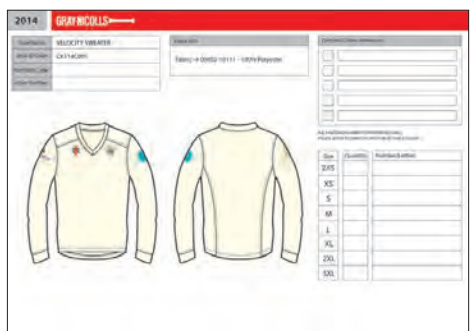
**Lead Time Guide - 2-4 weeks** from order acceptance depending on time of year.

## OPTION 4

### STOCKED ITEMS (no embellishment)

Order garments from our stocked range without any embellishment for the quickest delivery.

**Lead Time Guide - 1 week** from order placement subject to stock availability and credit.



#### Embellished Stock Items

Sample early stage design templates prepared for customer approval.

# Embellishment Services

---

**A complete embroidery and printing service is available from Gray-Nicolls for you to personalise your garments. Please speak to your Gray-Nicolls representative for more information.**

## **1. PRINTING**

Digital printing services are available for your crest and sponsor's logos.

- Please supply vector images of the crest or logo in EPS, PDF or AI / CDR formats where possible.
- Whilst J-Pegs can sometimes be used, there will be a logo redraw charge if we cannot use the format supplied.
- We will apply text in Arial Bold unless you advise on alternative fonts.
- We will use Pantone solid coated colour references supplied by you. If not available, we will match the colours as closely as we can from the vector designs supplied.
- We will e-mail an image of a printed sample for your approval.

## **2. NUMBERING, NAMES AND INITIALS**

- For personalisation we will use Arial Bold font in black and white unless you request an alternative.
- Font sizes have been standardised as noted below in order to fit our garments.
- Please supply by garment size full details of the name, number and initials required.

1 2 3 4 5 6 7 8 9 0  
A B C D E F G H I J

Numbers - 12/15/18cm

Names - 2.4/4cm

Initials - 2/3cm

## **3. EMBROIDERY**

Embroidery of your crest and sponsors logos is available if preferred.

- If the logo/crest has already been set up, please supply the embroidery DST file with run sheet (specific thread colour sequence).
- If the logo/crest has not been set up please supply the correct vector images in any of the following formats: EPS, PDF or AI/CDR. There is set-up charge to create a DST file.
- Please advise size of logo and how they should appear on dark and light garments.
- Please advise Madeira thread colours if known, if not, standard Gray-Nicolls colours will be used.
- We will e-mail an image of your actual embroidery for your approval.

## **4. FABRIC SUITABILITY**

Please note that some fabrics in the Gray-Nicolls range work better with printed embellishment rather than embroidery. We will be happy to advise you on the most appropriate application method for each garment chosen.

---

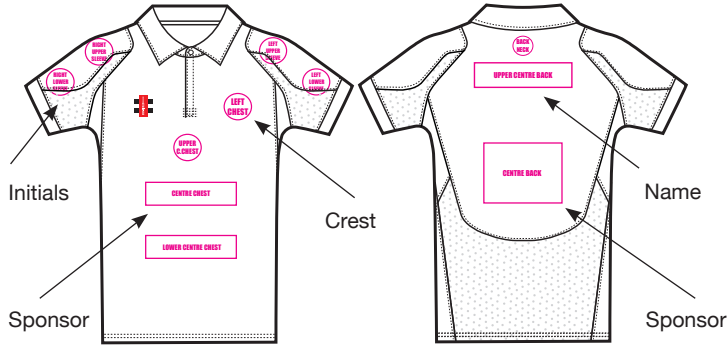
### **PLEASE NOTE**

Gray-Nicolls cannot accept responsibility for the unauthorised use of any third party logos or images. Gray-Nicolls reserve the right to refuse to apply any name or logo that we consider to be offensive or unsuitable.

# Embellishment Positions

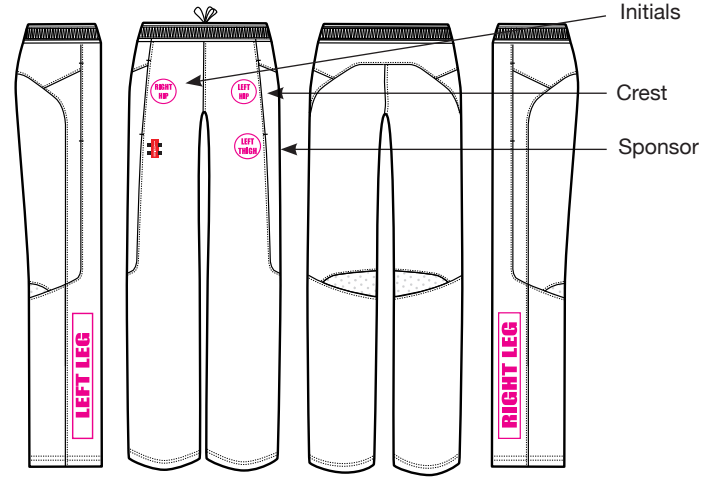
## MATCHWEAR - SHIRTS

All Gray-Nicolls match shirts can be branded as shown below.



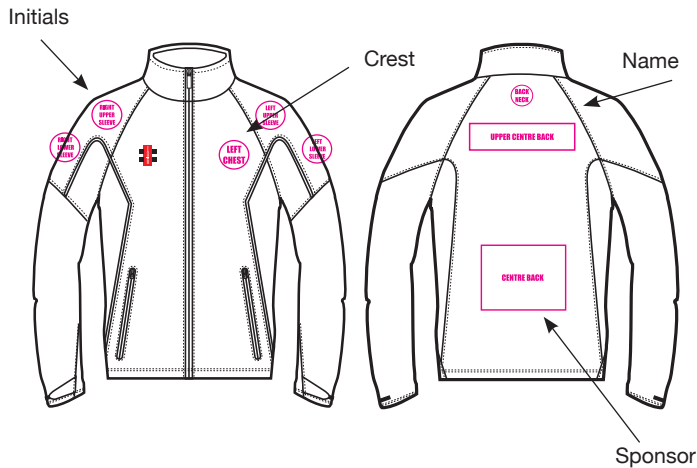
## MATCHWEAR - TROUSERS

All Gray-Nicolls match trousers can be branded as shown below.



## TRAINING WEAR - JACKETS

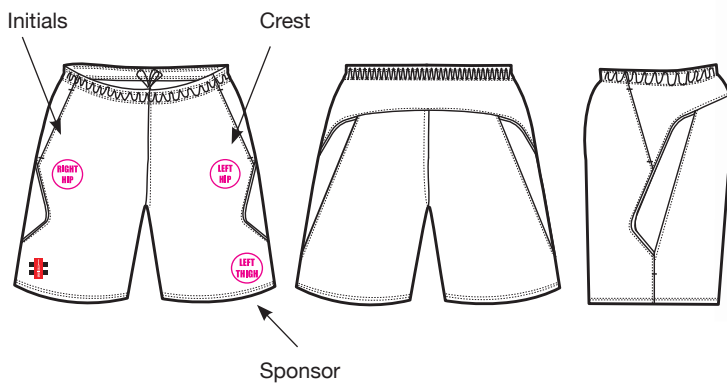
All Gray-Nicolls training tops can be branded as shown below.



A Matrix match shirt as worn by Durham CCC

## TRAINING WEAR - TROUSERS

All Gray-Nicolls training trousers can be branded as shown below.



## PLEASE NOTE

For MTO hoodies, fleeces and formal shirts only, the Gray-Nicolls logo may be applied using a tonal colour in keeping with the garment. This is the only exception from the standard red / white, or red/black application. Other logos may be added to the garments as design features, such as logo tabs sewn into the seams, or logos highlighting technical features of the garment.

# Glossary of Fabric Terms

---

## WARMTH

### G-Base 705

This fabric is designed for use in our base layers. It is made of synthetic materials which are designed not to absorb moisture but are fantastic at transporting it away from the skin. Wicking (a capillary action) is the process of drawing perspiration away from the skin through a material. Once the perspiration is drawn away from the skin, it can evaporate without having a cooling effect on the body.

### G-Knit 605

A traditional knitted fabric with more substantial weight to offer superb comfort and warmth, combined with a classic cable-knit design look.

### G-Wik 705

This fabric, known as "Bamboo" is highly breathable in hot weather to wick away perspiration and is also significantly warmer in the cold than traditional fabrics, making it perfect for athlete's requiring temperature regulation, regardless of the conditions.

### G-Fleece 705

The stretch in G-Fleece 705 allows the garment to move with the body. Stretch fleece is one of the most versatile fabrics available for use in sports clothing, thanks to its ability to provide warmth without weight.

### G-Fleece 605

Lightweight bonded fabric with a mesh design outer layer and fleece inner. The brushed inner layer of fleece offers superb comfort and warmth.

### G-Fleece 500/505

A traditional fleece fabric with excellent quality and weight. An attractive smooth face with a brushed reverse, offers superb comfort and warmth.

### G-Fleece 400

Fleece fabric with an attractive smooth face which is ideal for sublimation with a brushed reverse which offers superb comfort and warmth.

## COMFORT

### G-Com 700/705

A lightweight woven fabric, ideally suited for leisure-wear styles in a range of climates. Thanks to a soft peach-like feel specifically selected for track suits, this fabric is extremely popular with our professional athletes.

### G-Com 600/605

Easy-care with a textured sports finish, this is a popular choice for Teamwear as it is extremely flexible. It is not only stocked in solid colours but can also be sublimated to your own design requirements.

### G-Com 500/505

A more durable and traditional woven fabric also featuring a soft peach-feel with a matt finish.

## LIGHT WEIGHT

### G-Lite 800

Light weight fabric, specifically designed to be breathable but also soft and supple for comfort in play.

### G-Lite 700/705

A light-weight mesh that features a honeycomb construction with a softer, lighter feel. It has excellent drying properties for added comfort. Suitable for training and leisure needs.

### G-Lite 600/605

An extremely light-weight, soft-touch fabric featuring a highly-breathable construction that allows moisture vapours to flow through. This acts to wick perspiration away from your skin, hence minimising perspiration and keeping your body cool and dry.

### G-Lite 500/505

A breathable fabric construction that allows moisture to flow through. Actively wicks perspiration away from your skin, keeping you cool and dry.

### G-Lite 400

A specifically formulated to accommodate sublimation printing, this fleece-style fabric has an attractive smooth face which allows you an unlimited choice of design. Its brushed reverse also delivers superb comfort and warmth.

### G-Mesh / G-Mesh 400

Specially designed wider mesh weave for maximum ventilation in those areas where your body needs it most.

## FIT

### G-Pro Stretch 700/705

A lightweight performance fabric that stretches to provide an athletic fit and developed to be sublimated with your own design. The construction delivers a soft and light texture. This fabric minimises restriction of movement, thus improving performance and comfort in play. This fabric is also stocked in solid colours.

## WATER RESISTANCE

### G-WP 750/755

Developed to give good water resistance and breathability to keep you dry and comfortable. This protects from the elements while out on the pitch and also for everyday use.

### G-WP 500/505 Revolution

A modern, high tech, woven taslon fabric which is strong, durable, water-resistant and wind-resistant. Ideal for outerwear garments suitable for training in every day of the week and offering reliable protection from the weather.

## PLEASE NOTE

Where Stock Clothing uses the same fabric construction you will note that the descriptive title substitutes a numeric '5' for the last number.  
Example: **G-Lite 500** becomes **G-Lite 505**

---

## THE RIGHT TEMPERATURE TO WASH CLOTHES

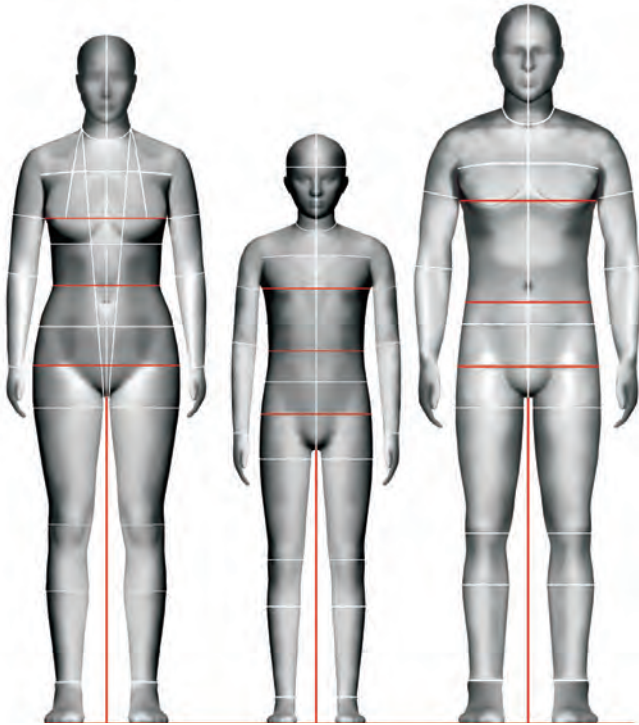
The golden rule, before you start any load of laundry, is to check the care labels on all your clothes. This will give you an idea of the absolute maximum temperature you can wash your garments, and help you avoid disaster. It is always worth noting that bright and dark colours prefer cooler, quicker washes.

Higher temperatures washing encourages the loss of dye and fade black and bright clothes by opening up the fibres, so a warm or cool wash is your best bet.

To set dye, try using white vinegar instead of detergent when you wash new clothes for the first time. After the first wash, using a good detergent aimed at low temperature washing will ensure you get a great clean, even at lower temperatures.

# Size Chart

The fit of your clothes depends on many things, including the cut, fabric, styling and even the underwear you are wearing! By following our body guide and how to measure guide, we hope to find you the best possible fit. It is always suggested that you measure more than once as your posture changes when you move and sometimes affects the measurement you take - do this and take an average of the measurements.



## MEASURING

### CHEST CIRCUMFERENCE

Keeping the tape level, measure all the way around the fullest part of the chest approximately 2.5cm below the arm pits.

### WAIST CIRCUMFERENCE

Keeping the tape level, measure all the way around the narrowest part of your waist (our trousers and shorts are elasticated so there is always plenty of room for movement).

### LOW HIP CIRCUMFERENCE

Keeping the tape level, measure all the way around the fullest part of the bottom.

### INSIDE LEG

Measure from the top of the inside leg to bottom of the heel. (our trousers are designed to fit inclusive of shoes. Please remember you can always take a trouser up if they are a little long. Try turning your waistband over or sewing the hem.

### GENERAL TIPS

Measure yourself wearing underwear - do not measure over clothing  
Stand straight and keep both feet on the floor  
Make sure the tape measure is kept level.

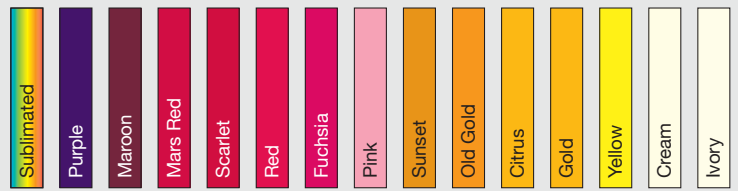
Ask a friend to help take your measurements - (it's sometimes easier to have help)

Our ranges are designed with layering in mind. If you buy a jacket for your body size you can be sure you will be able to fit a top and a light sweater underneath.

All measurements are an approximate guide.

MEN'S SIZING		XXS	XS	S	M	L	XL	2XL	3XL
<b>CHEST</b> cm		89	93	97	101	105	110	115	120
inches		35	36½	38	39½	41	43¼	45¼	47½
<b>WAIST</b> cm		72 - 76	76 - 80	80 - 84	84 - 88	88 - 93	93 - 98	98 - 103	103 - 108
inches		26¾ - 28½	28½ - 30	30 - 31½	31½ - 33	33 - 36½	36½ - 38½	38½ - 40½	40½ - 42½
<b>LOW HIP</b> cm		88	92	96	100	105	110	115	120
inches		34¾	36½	38	39½	41½	43¼	45¼	47½
<b>INSIDE LEG (Standard)</b> cm		76	78	80	82	83	84	85	86
inches		30	30¾	31½	32½	32¾	33	33½	34
<b>INSIDE LEG (Unturned Hem)</b> cm		85	87	89	91	92	93	94	95
inches		33¾	34¼	35	36	36¼	36½	37	37½
LADIES' SIZING		6	8	10	12	14	16	18	20
<b>CHEST</b> cm		78	82	86	90	94	98	102	106
inches		30¾	32½	34	35½	37	38½	40	41¾
<b>WAIST</b> cm		55 - 60	60 - 64	64 - 68	68 - 72	72 - 76	76 - 80	80 - 84	84 - 88
inches		22 - 23½	23½ - 25¼	25¼ - 26¾	26¾ - 28½	28½ - 30	30 - 31½	31½ - 33	33 - 34½
<b>LOW HIP</b> cm		86	90	94	98	102	106	110	114
inches		34	35½	37	38½	40	41¾	43¼	45
<b>INSIDE LEG (Standard)</b> cm		75	76	77	78	79	80	81	82
inches		29½	30	30¼	30¾	31½	31½	32	32¼
CHILDREN'S SIZING		AGE 5 - 6	AGE 7 - 8	AGE 9 - 10	AGE 11 - 12				
<b>CHEST</b> cm		63.5	67.5	71.5	75.5				
inches		25	26½	28	29½				
<b>WAIST</b> cm		51.5 - 55.5	55.5 - 59.5	59.5 - 63.5	63.5 - 67.5				
inches		20 - 21½	21½ - 23¼	23¾ - 25	25 - 26½				
<b>LOW HIP</b> cm		66	70	74	78				
inches		26	27½	29	30½				
<b>INSIDE LEG (Standard)</b> cm		55	60	65	70				
inches		21	23½	25½	27½				
<b>INSIDE LEG (Unturned Hem)</b> cm		61	66	71	76				
inches		24	26	28	30				

# Fabric Options Colour Chart



## MADE TO ORDER FABRIC CODES

## COLOUR OPTIONS AVAILABLE FOR EACH FABRIC

Fabric Code	Sublimated	Purple	Maroon	Mars Red	Scarlet	Red	Fuchsia	Pink	Sunset	Old Gold	Citrus	Gold	Yellow	Cream	Ivory
G-Com 700		█	█		█					█	█				
G-Com 600			█	█		█				█			█	█	
G-Com 500													█		
G-Fleece 500		█	█	█	█		█					█			
G-Fleece 400	█														
G-Lite 800		█	█	█	█		█					█			
G-Lite 700		█	█	█								█			
G-Lite 600			█	█	█				█			█		█	
G-Lite 500		█	█	█		█	█					█		█	
G-Mesh 400			█			█	█	█					█	█	
G-Mesh			█			█		█	█				█		
G-Pro Stretch 700	█	█		█											
G-WP 750						█									
G-WP 500 Revolution			█	█								█			

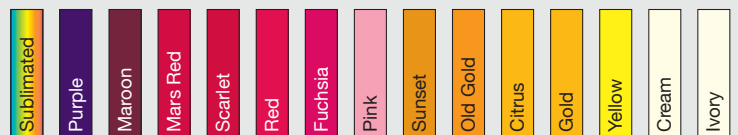
## STOCK FABRIC CODES

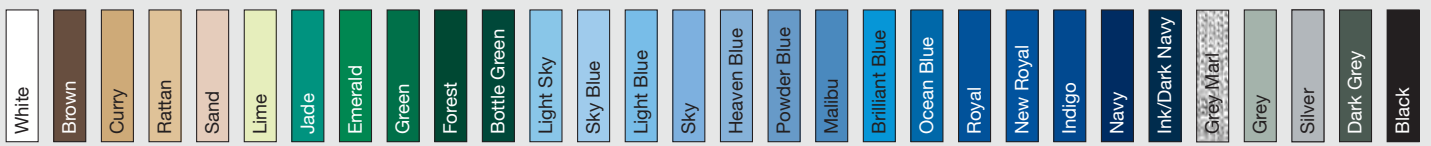
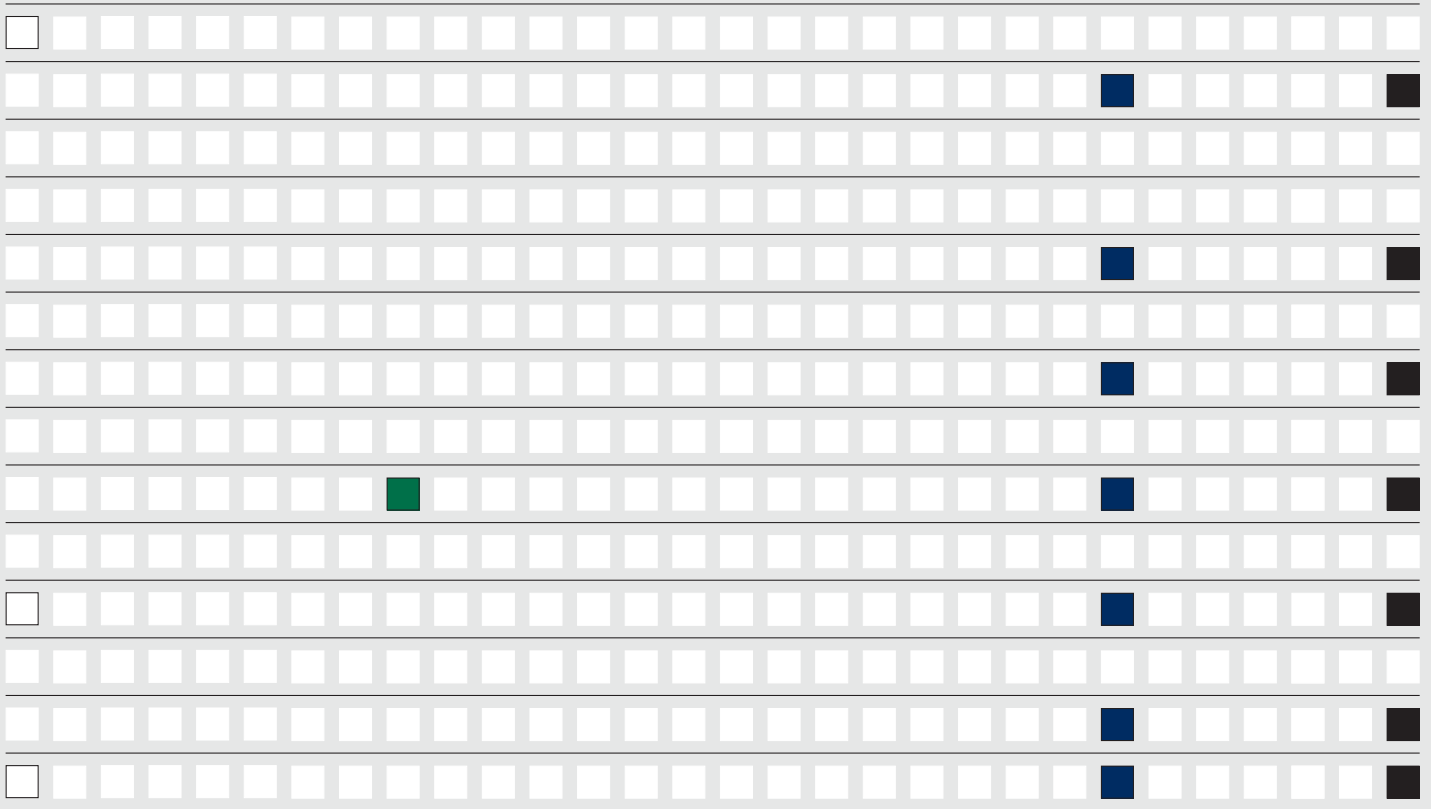
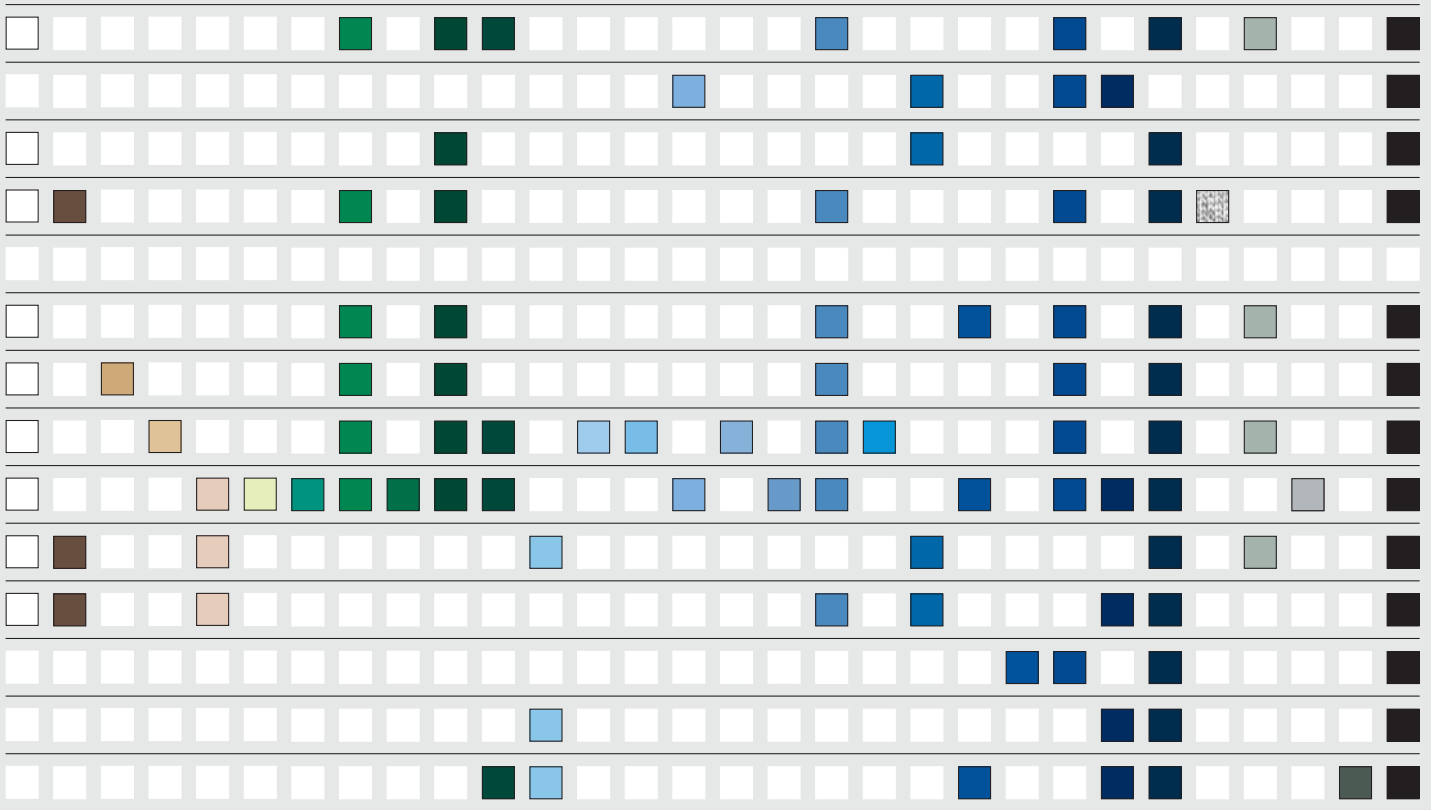
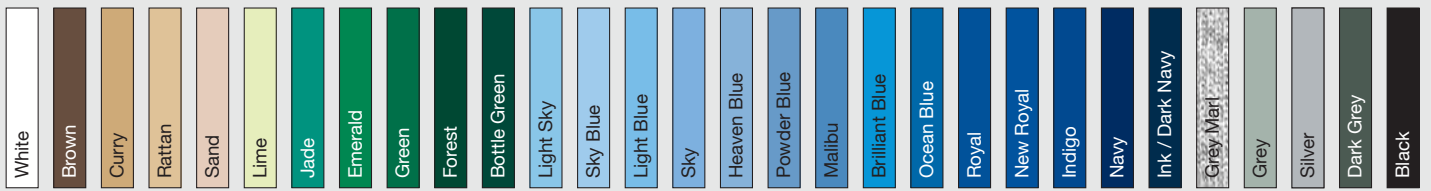
## COLOUR OPTIONS AVAILABLE FOR EACH FABRIC

Fabric Code	Sublimated	Purple	Maroon	Mars Red	Scarlet	Red	Fuchsia	Pink	Sunset	Old Gold	Citrus	Gold	Yellow	Cream	Ivory
G-Base 705															
G-Com 705															
G-Com 605															█
G-Com 505															█
G-Fleece 705															
G-Fleece 605															█
G-Fleece 505															
G-Knit 605															█
G-Lite 605			█			█									
G-Lite 505															█
G-Pique 405															
G-Pro Stretch 705															█
G-Wik 705															
G-WP 755															

**PLEASE NOTE:**

The colours displayed in this chart may not be an accurate reproduction of the actual fabric colour they represent. This is due to variances between printing and fabric colours. These colours are provided as a guide only





Your kit, your colours



Clubs and Schools



[www.gray-nicolls.co.uk](http://www.gray-nicolls.co.uk)



@graynics



Gray-Nicolls Grays



FOR FURTHER DETAILS  
PLEASE CONTACT YOUR  
SALES REPRESENTATIVE  
OR CALL

**01580 883120**

**GRAY-NICOLLS**

Tel: +44 (0) 1580 880357 Fax: +44 (0) 1580 881156

Email: [sales@gray-nicolls.co.uk](mailto:sales@gray-nicolls.co.uk)

We reserve the right to change or delete products without prior notice.

Please note: The colour of products in this catalogue have been represented as accurately as possible, but are guided by the limitations of the four-colour printing process.