

DE Encoder (BiSS-C)

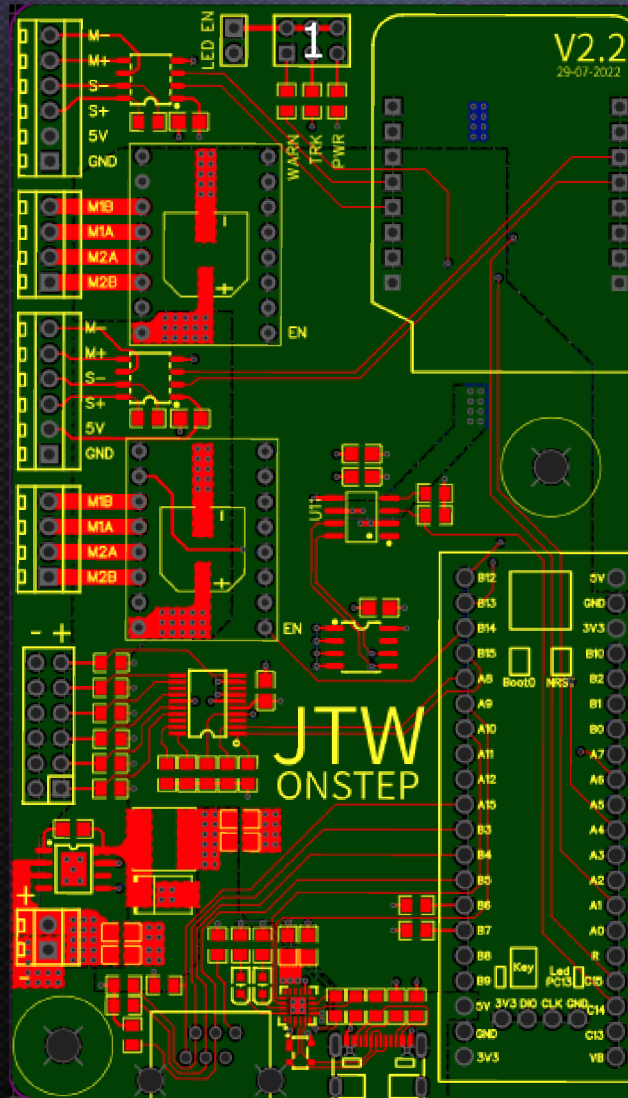
DE Motor

RA Encoder (BiSS-C)

RA Motor

Multiplexer (Not implemented in FW)

Power in - 12 - 20 VDC



ST4 Port USB Port

WiFi Module - ESP8266
Remove for flashing SWS

1 - Status LEDs for warning, tracking and power
Resistors are 150Ω

BlackPill STM32F411CEU6
Flash using on-board USB.
DFU Mode. Power must
be applied to PCB while
flashing the firmware.