



NV CANN LABS
FROM ART TO SCIENCE



P3JA
Testing
Accreditation #97453

Certificate of Analysis

Powered by Confident Cannabis
1 of 1

Global Cannabinoids

Las Vegas, NV 89119

Lic. #

Sample: 2021NVC1441-11068

Strain: FULL SPEC. GUMMY LEMON

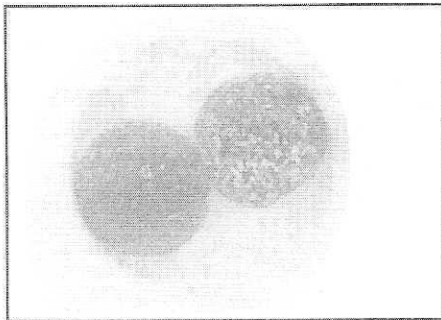
Batch #: FSGUM2106L10; Lot #: FSGUM2106L10;

Sample Received: 06/04/2021; Report Created: 06/09/2021

FULL SPEC. GUMMY LEMON

Ingestible, Soft Chew

Harvest Process Lot: ; METRC Batch: ; METRC Sample:



<LOQ

THCa

0.587
mg/unit

Δ9-THC

14.809
mg/unit

CBD

Cannabinoids

Analyte	LOQ	Mass	Mass
	mg/unit	mg/unit	%
THCa	0.062	<LOQ	<LOQ
Δ9-THC	0.062	0.587	0.0130
CBDa	0.062	<LOQ	<LOQ
CBD	0.062	14.809	0.3280
CBC	0.062	0.903	0.0200
CBG	0.062	0.181	0.0040
CBN	0.062	<LOQ	<LOQ
THCV	0.062	<LOQ	<LOQ
Δ8-THC	0.062	<LOQ	<LOQ
CBGa	0.062	<LOQ	<LOQ
CBDV	0.062	<0.062	<0.0014
Total		16.480	0.3650

1 Unit = , 4.515g

Notes:

Total THC = THCa * 0.877 + Δ9-THC + Δ8-THC

Total CBD = CBDa * 0.877 + CBD

Total Edible THC = Δ9-THC + Δ8-THC

LOQ = Limit of Quantitation; The reported result is based on a sample weight with the applicable moisture content for that sample; Unless otherwise stated all quality control samples performed within specifications established by the Laboratory. Cannabinoids analyzed by SOP-021.

6631 Schuster Street
Las Vegas, NV
(702) 826-2700
<http://www.nvcann.com>

Hui Wang

Hui Wang
Scientific Director

Confident Cannabis
All Rights Reserved
support@confidentcannabis.com
(866) 506-5866



All pass limits are as specified in NAC 453.A and Taxation Department Second Policies. Unless otherwise stated all quality control samples performed within specifications established by the Laboratory. This product has been tested by NV Cann Labs using valid testing methodologies and a quality system as required by Nevada state law. Values reported relate only to the product tested. NV Cann Labs makes no claims as to the efficacy, safety or other risks associated with any detected or non-detected levels of any compounds reported herein. This Certificate shall not be reproduced except in full, without the written approval of NV Cann Labs. Uncertainty and statement of conformity are available upon request. All analysis were performed at NV Cann Labs unless otherwise stated. Sampling Plan SOP-001 and Sampling Method SOP-027 were used to collect samples. If sample(s) are NOT collected by NV Cann Labs, result(s) apply to the samples received.



NV CANNLABS
FROM ART TO SCIENCE



P.J.L.A.
Testing
Accreditation #97453

Certificate of Analysis

Powered by Confident Cannabis

1 of 1

Global Cannabinoids

Las Vegas, NV 89119

Lic. #

Sample: 2021NVC1441-11070

Strain: FULL SPEC. GUMMY STRAWBERRY

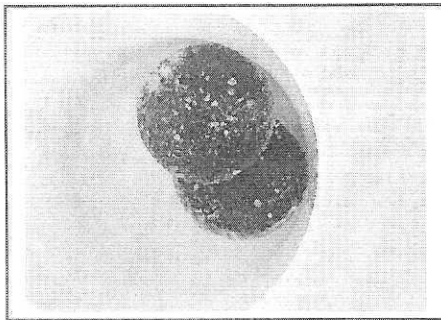
Batch #: FSGUM2106S10; Lot #: FSGUM2106S10;

Sample Received: 06/04/2021; Report Created: 06/09/2021

FULL SPEC. GUMMY STRAWBERRY

Ingestible, Soft Chew

Harvest Process Lot: ; METRC Batch: ; METRC Sample:



<LOQ

THCa

0.612
mg/unit

Δ9-THC

14.695
mg/unit

CBD

Cannabinoids

Analyte	LOQ	Mass	Mass
	mg/unit	mg/unit	%
THCa	0.071	<LOQ	<LOQ
Δ9-THC	0.071	0.612	0.0130
CBDa	0.071	<LOQ	<LOQ
CBD	0.071	14.695	0.3120
CBC	0.071	0.989	0.0210
CBG	0.071	0.141	0.0030
CBN	0.071	<LOQ	<LOQ
THCV	0.071	<LOQ	<LOQ
Δ8-THC	0.071	<LOQ	<LOQ
CBGa	0.071	<LOQ	<LOQ
CBDV	0.071	<LOQ	<LOQ
Total		16.438	0.3490

1 Unit = , 4.71g

Notes:

Total THC = THCa * 0.877 + Δ9-THC + Δ8-THC

Total CBD = CBDa * 0.877 + CBD

Total Edible THC = Δ9-THC + Δ8-THC

LOQ = Limit of Quantitation; The reported result is based on a sample weight with the applicable moisture content for that sample; Unless otherwise stated all quality control samples performed within specifications established by the Laboratory. Cannabinoids analyzed by SOP-021.

6631 Schuster Street
Las Vegas, NV
(702) 826-2700
<http://www.nvcann.com>

Hui Wang

Hui Wang
Scientific Director

Confident Cannabis
All Rights Reserved
support@confidentcannabis.com
(866) 506-5866



All pass limits are as specified in NAC 453.A and Taxation Department Second Policies. Unless otherwise stated all quality control samples performed within specifications established by the Laboratory. This product has been tested by NV Cann Labs using valid testing methodologies and a quality system as required by Nevada state law. Values reported relate only to the product tested. NV Cann Labs makes no claims as to the efficacy, safety or other risks associated with any detected or non-detected levels of any compounds reported herein. This Certificate shall not be reproduced except in full, without the written approval of NV Cann Labs. Uncertainty and statement of conformity are available upon request. All analysis were performed at NV Cann Labs unless otherwise stated. Sampling Plan SOP-001 and Sampling Method SOP-027 were used to collect samples. If sample(s) are NOT collected by NV Cann Labs, result(s) apply to the samples as received.



NV CANNLABS
FROM ART TO SCIENCE



P.J.L.A.
Testing
Accreditation #97453

Certificate of Analysis

Powered by Confident Cannabis
1 of 1

Global Cannabinoids

Las Vegas, NV 89119

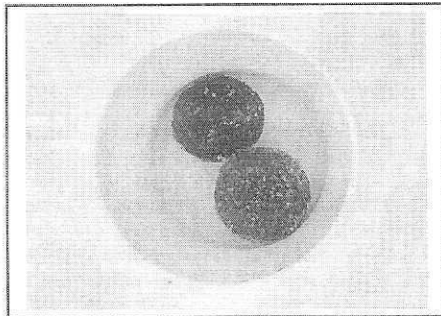
Sample: 2021NVC1441-11069

Strain: FULL SPEC. GUMMY WATERMELON
Batch #: FSGUM2106W10; Lot #: FSGUM2106W10;
Sample Received: 06/04/2021; Report Created: 06/09/2021

Lic. #

FULL SPEC. GUMMY WATERMELON

Ingestible, Soft Chew
Harvest Process Lot: ; METRC Batch: ; METRC Sample:



<LOQ

THCa

0.622
mg/unit

Δ9-THC

15.407
mg/unit

CBD

Cannabinoids

Analyte	LOQ	Mass	Mass
	mg/unit	mg/unit	%
THCa	0.068	<LOQ	<LOQ
Δ9-THC	0.068	0.622	0.0140
CBDa	0.068	<LOQ	<LOQ
CBD	0.068	15.407	0.3470
CBC	0.068	0.932	0.0210
CBG	0.068	0.178	0.0040
CBN	0.068	<LOQ	<LOQ
THCV	0.068	<LOQ	<LOQ
Δ8-THC	0.068	<LOQ	<LOQ
CBGa	0.068	<LOQ	<LOQ
CBDV	0.068	<LOQ	<LOQ
Total		17.138	0.3860

1 Unit = , 4.44g

Notes:

Total THC = THCa * 0.877 + Δ9-THC + Δ8-THC

Total CBD = CBDa * 0.877 + CBD

Total Edible THC = Δ9-THC + Δ8-THC

LOQ = Limit of Quantitation; The reported result is based on a sample weight with the applicable moisture content for that sample; Unless otherwise stated all quality control samples performed within specifications established by the Laboratory. Cannabinoids analyzed by SOP-021.

6631 Schuster Street
Las Vegas, NV
(702) 826-2700
http://www.nvcann.com

Hui Wang

Hui Wang
Scientific Director

Confident Cannabis
All Rights Reserved
support@confidentcannabis.com
(866) 506-5866



All pass limits are as specified in NAC 453.A and Taxation Department Second Policies. Unless otherwise stated all quality control samples performed within specifications established by the Laboratory. This product has been tested by NV Cann Labs using valid testing methodologies and a quality system as required by Nevada state law. Values reported relate only to the product tested. NV Cann Labs makes no claims as to the efficacy, safety or other risks associated with any detected or non-detected levels of any compounds reported herein. This Certificate shall not be reproduced except in full, without the written approval of NV Cann Labs. Uncertainty and statement of conformity are available upon request. All analysis were performed at NV Cann Labs unless otherwise stated. Sampling Plan SOP-001 and Sampling Method SOP-027 were used to collect samples. If sample(s) are NOT collected by NV Cann Labs, result(s) apply to the samples as received.