

PORTABLE UVC LIGHT 36W

APPLICATIONS

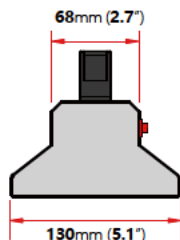
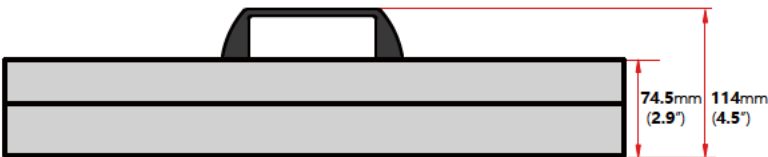
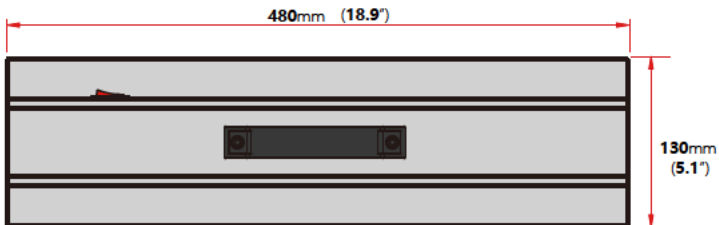
- Hospital
- School
- Apartment
- Office
- Fitness room
- Restaurant
- Shopping Mall
- GYM



EPA NO.97623

DIMENSIONS

36W



INUI LTD



SPECIFICATIONS

Model Number	INUI-UVC-36W-Portable
Watts	36W
Lamp Source	254nm UV-C fluorescent lamp (Philips / Osram)
Lamp Qty	1 lamp
Dimensions	18 9"-L x 5.1"-W x 4 5"-H 480mm-L x 130mm-W x 114mm-H
Voltage	110-120V AC, 50/60Hz / 220-240V AC, 50/60Hz
Single-lamp Watts	36W
Total UV Watts	36W
Total UV Irradiance	110 μ W/cm ² @ 1Meter
Single-lamp UV Output	12W
Total UV Output	12W
Lamp Lifespan	8,000hours
Ballast	Electronic, PF>0.9
Amps:	0.16A (230V) / 0.33A (110V)
Ambient Operating Temp	26.7°C / 80°F
Materials	304 Stainless Steel (Standard) / Galvanized Metal (Optional)
Mounting	Portable

Features

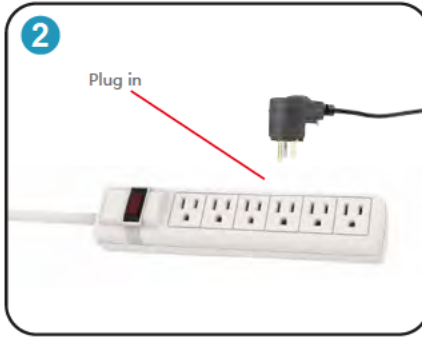
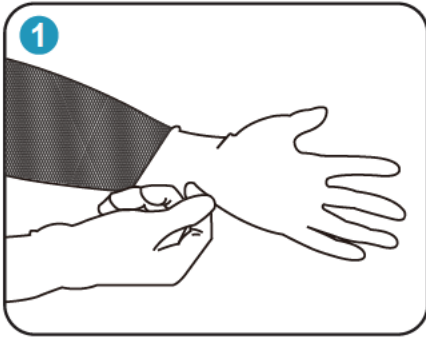
Short-wave Germicidal Light
Ozone & Chemical Free
EPA Reg. No. 97623
EPA Est. No. 97623-CHN-1

PLEASE NOTE: UVC light is harmful for eyes and skin which can cause temporary or permanent loss of vision and temporary acute redness or ulceration. UVC LIGHT MUST BE invisible during operation, DO NOT operate the UVC light equipment in any application non-isolated. NEVER LOOK DIRECTLY AT THE UVC LIGHT OR DISINFECTING TARGET AREA. DO NOT TOUCH THE LAMPS WITH BARE HANDS. WARNING SIGN MUST SET UP DURING OPERATION.

INUI LTD

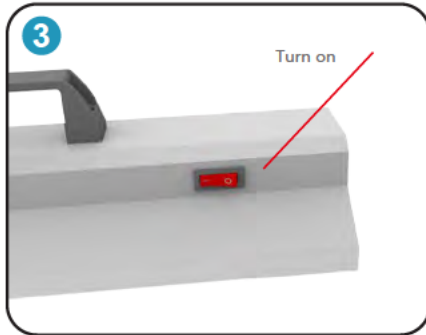
Add Unit 4, Beaumont Court, Prince William Road, Loughborough, LE11 5DA
 Ph +44 01509 266355
 Email sales@inui.co.uk

OPERATE GUIDE

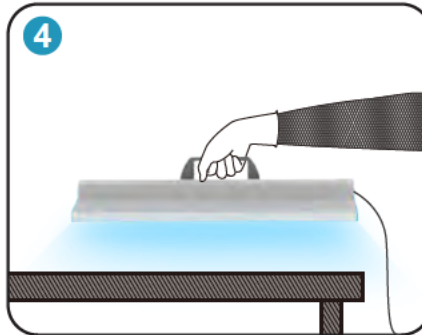


Step 1
Put on the gloves. Do NOT use without wearing the gloves.

Step 2
Install the UV-C lamp, then plug in.



Step 3
Turn on the Switch.



Step 4
NEVER turn the UV-C lamp facing up when switched on.

Step 5
Scan on the top of the surface for any target disinfection area.

PACKAGE CONTENTS



Portable UVC Light

INUI LTD

Add Unit 4, Beaumont Court, Prince William Road, Loughborough, LE11 5DA
Ph +44 01509 266355
Email sales@inui.co.uk