



MERCURY I

MODEL

LED Street Light/Area Light

40W 60W

MAXIMUM ENERGY SAVINGS

A minimal total cost of ownership was the driving force behind the development of the Mercury range. It is equipped with LEDs and various dimming and remote management options for a dramatic reduction in energy consumption. It offers a very competitive alternative to luminaires equipped with traditional light sources such as high-pressure sodium lamps.



Mercury Model 40W 60W



STREET LIGHT SPECIFICATION SHEET



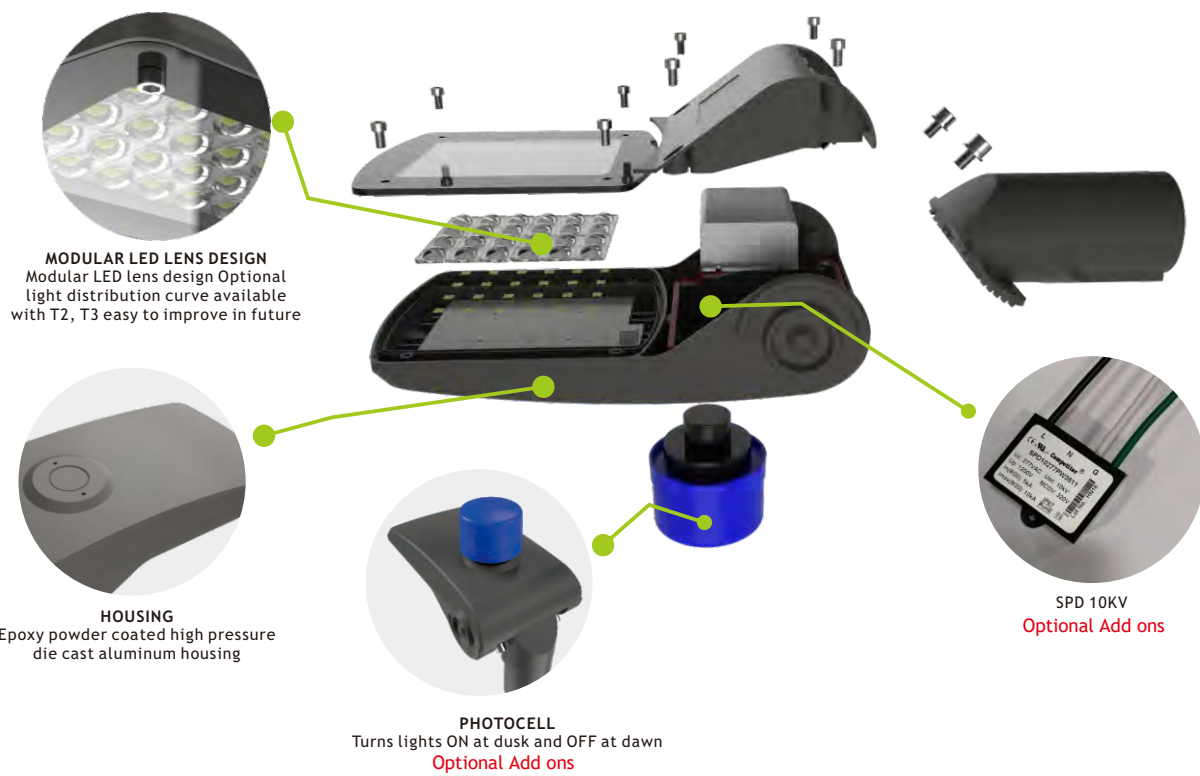
The Mercury range street light is a perfect solution for secondary roads, parks gardens and pathways. It is aesthetically appealing due to its compact design and has a wide range of outdoor solutions with reduced cost of ownership. It can very well replace most of the fluorescent based luminaires (CFL/FTL) and also ensures uniform lighting distribution.

► SLEEK DESIGN

INUI Continues to raise the bar on performance and lower the total cost of ownership by delivering higher value to municipalities and facility managers. The new Mercury Model street light with its unrivaled lumen output for roadway lighting and economic performance expands the application range replacing up to 125W HPSV/MH street lights.

Mercury Model series the perfect fit for a wide array of roadway applications helping to improve the economic value for development authorities, municipalities or owned utilities.

- Residential Complex
- Small trac round - about
- Lighting of secondary roads / side roads
- Parks & gardens
- Security lighting





MERCURY MODEL 40W 60W

STREET LIGHT SPECIFICATION SHEET

Product Mercury Model

Model	INUIMESL-T40W-LV(XXK)	INUIMESL-T60W-LV(XXK)
System Efficacy	160LM/W±3%	160LM/W±3%
Luminous Flux (Photometered)	6400 lm	9600 lm
Driver	XLG-50-H-A	XLG-75-H-A
Distribution Type	Type II / Type III / Type V	
CCT	30K - 3000K 40K - 4000K	50K - 5000K 57K - 5700K
CRI	>70	
Surge protection device	10KV	

Electrical Characteristics (Luminaire)

	40W Typical	60W Typical
Power Consumption	40W Typical	60W Typical
Input Volt	100-277VAC	100-277VAC
Frequency Range	47-63Hz	47-63Hz
Power Factor	>0.95 / 230VAC	>0.95 / 230VAC
Total Harmonic Distortion	< 20%	< 20%
Dimming Function	1 - 10V Continuous / PWM DALI Optional	

Environmental

IP Rating	IP66
Impact Rating	Ik08
Salt Spray Tested	Yes
Operating Temp. Range	-30° ~ 122° F (-30° - 45° C)
Operating Humidity	15 - 90%
Thermal Management Type	Natural air cooling
Expected Lifespan	60,000 Hours to 70% Brightness
Material Composition (Body)	ADC-12 Aluminium Alloy (<0.1% copper content)
Material Composition (Optics)	PMMA (UV Resistance)
Material Composition (Cover)	Extra clear tempered glass protect
Mounting/Bracket Type	Post-top position, Side-entry position
Cable Gland	Pg11
Cable Ø Entry Range	10 -14mm

Product Mercury Model

Model	INUIMESL-T40W-LV(XXK)	INUIMESL-T60W-LV(XXK)
Weight/ Packaging		
Luminaire Weight		
Packaging Dimensions		
Packaged Weight		

Certificates (Safety Standards)

ETL		✓
DLC(Standard)		✓
ENEC	IEC/EN60598-2-3	✓
CB	IEC/EN60598-1	✓
TUV CE-LVD	IEC/EN62778	✓
Australian deviation		✓
TUV CE-EMC	EN55014 EN61547 EN61000-3-2 EN61000-3-3	✓
SAA		✓
TUV IK08		✓
Salt Spray Test	24H	✓
IP66	By ENEC	✓
Flammability test	By ENEC	✓

Warranty

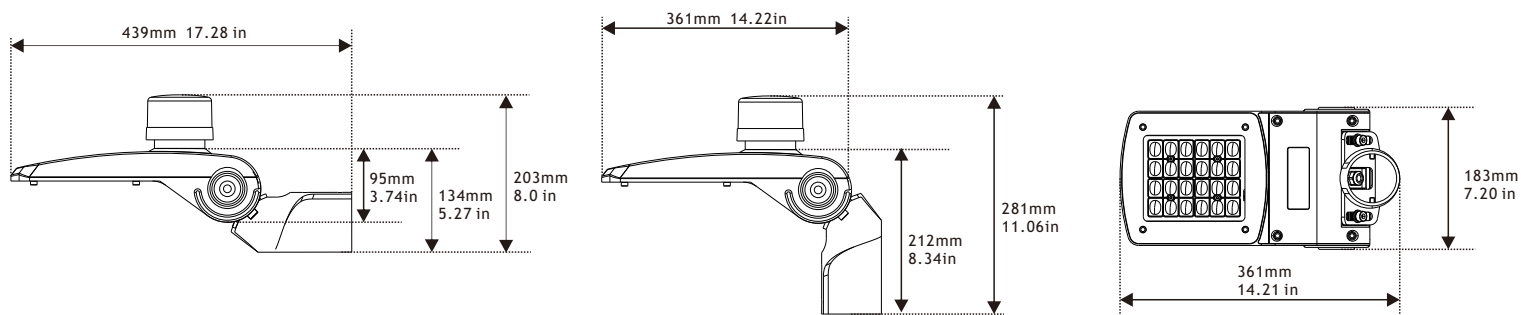
Warranty

5 years extended warranty optional



▼ DIMENSIONS

Length:	17.28in (439 mm)	Height:	3.74in (95 mm)
Width:	7.20 in (183 mm)	Height (w/photocell):	5.27 in (134 mm) Horizontal
		Height (w/photocell):	11.06 in (281 mm) Vertical



▼ MOUNTING OPTIONS

The Mercury fixture includes simple installation with convenient adjust-ability.

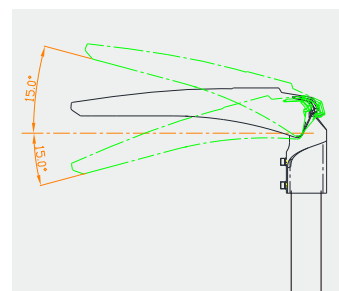
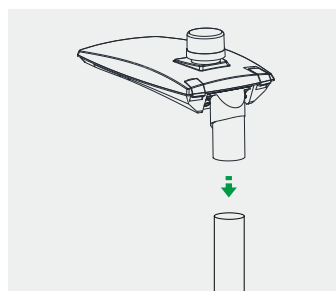
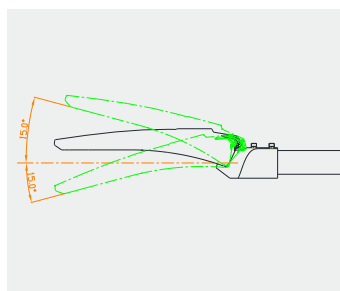
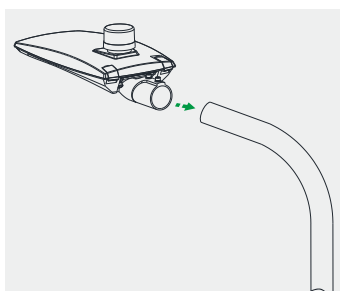
The Mercury fixture can be mounted horizontally or vertically with our universal slip fit system. Simply detach and rotate the slip fitter 180° to achieve the vertical orientation. Both orientation options include the ability to rotate 15° or more.



Horizontal MOUNTING
Post-top position
(rotates ±15°)



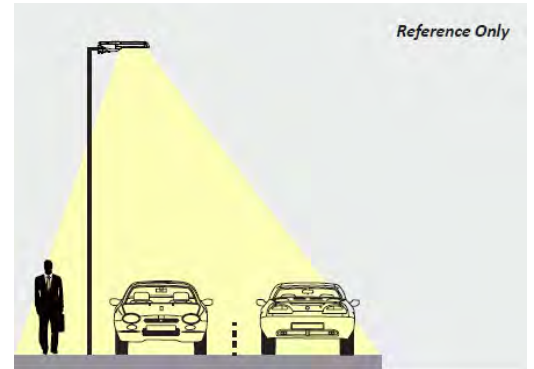
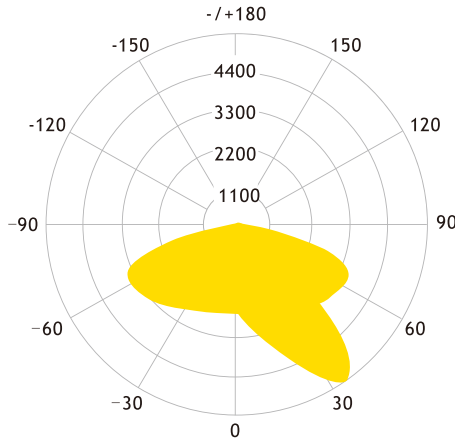
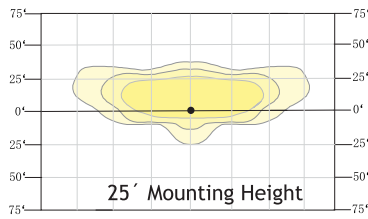
Vertical MOUNTING
Side-entry position
(rotates ±15°)



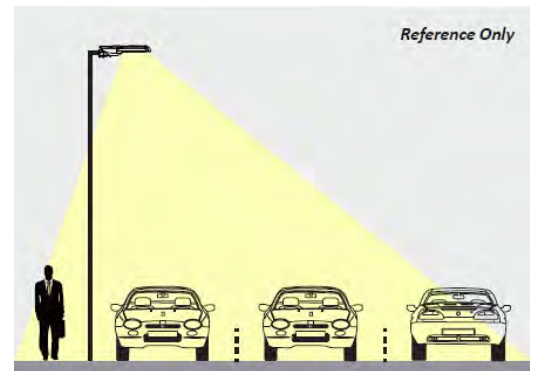
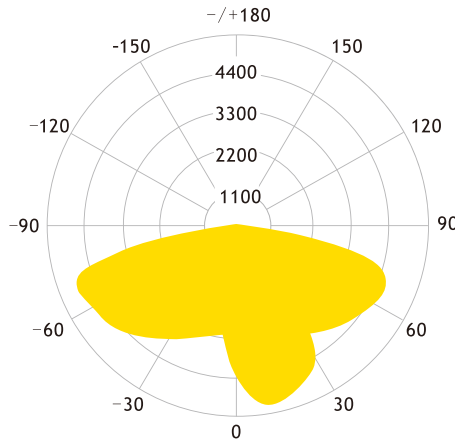
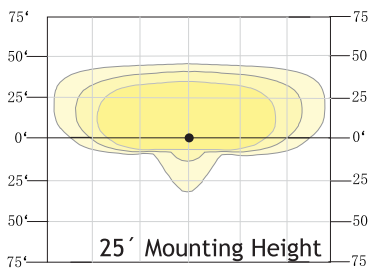


▼ PHOTOMETRIC OPTIONS

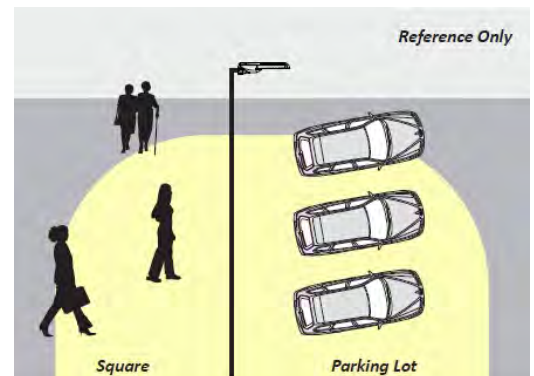
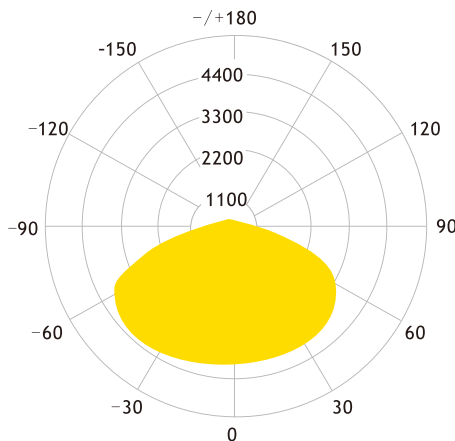
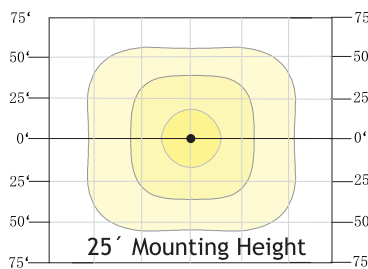
Type II (T2)
Distribution Type



Type III (T3)
Distribution Type



Type V (T5)
Distribution Type





▼ ORDERING EXAMPLE

MERCURY STREET LIGHT

Type I Model

INUIMESL-* XXW- LV (XXK)

I - Type 1 Small
 II - Type 2 Medium
 III - Type 3 Large
 IV - Type 4 X-Large

3000K
 4000K
 5000K
 5700K

HV - 347-480VAC LV - 100-277VAC

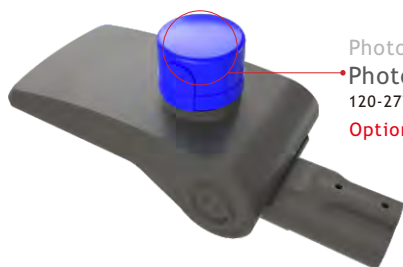
Wattage
 40W 60W 80W 100W 120W 150W 180W 200W

Product Family
 INUI- INUI
 MESL- Mercury Street Light

► ACCESSORY: PHOTOCELL

The Mercury Street Light Photocell integration controls the illumination of the fixture by detecting surrounding ambient light.

Photocell base comes pre-installed, twist lock cap included in package when shipped and ready to apply during assembly. Twist-Lock Photocell automatically turns lights On at Dusk and Off at Dawn.



Photocell integration controls
 • Photo-cell: TL1277
 120-277Volt Twist/Lock photocell
Optional



► ACCESSORY: SURGE PROTECTION DEVICE

The standard 100-277v fixture comes equipped with 10kA surge protection already integrated.

SPD surge protection devices is perfectly adapted for outdoor lighting to provide single phase protection for line/neutral, line/ground and neutral/ground in accordance with IEEE C62.41 2002 C High, UL1449 and IEC61643-11



Optional

► ACCESSORY: MOUNTING

The Mercury Street Light comes standard with a 76mm slip fitter.

Optional slip fitter mounts are available at 60mm, and 76mm diameters.

	MOUNTING	SIZE
	Mercury Slip Fitter 60mm	60mm
	Mercury Slip Fitter 76mm	76mm